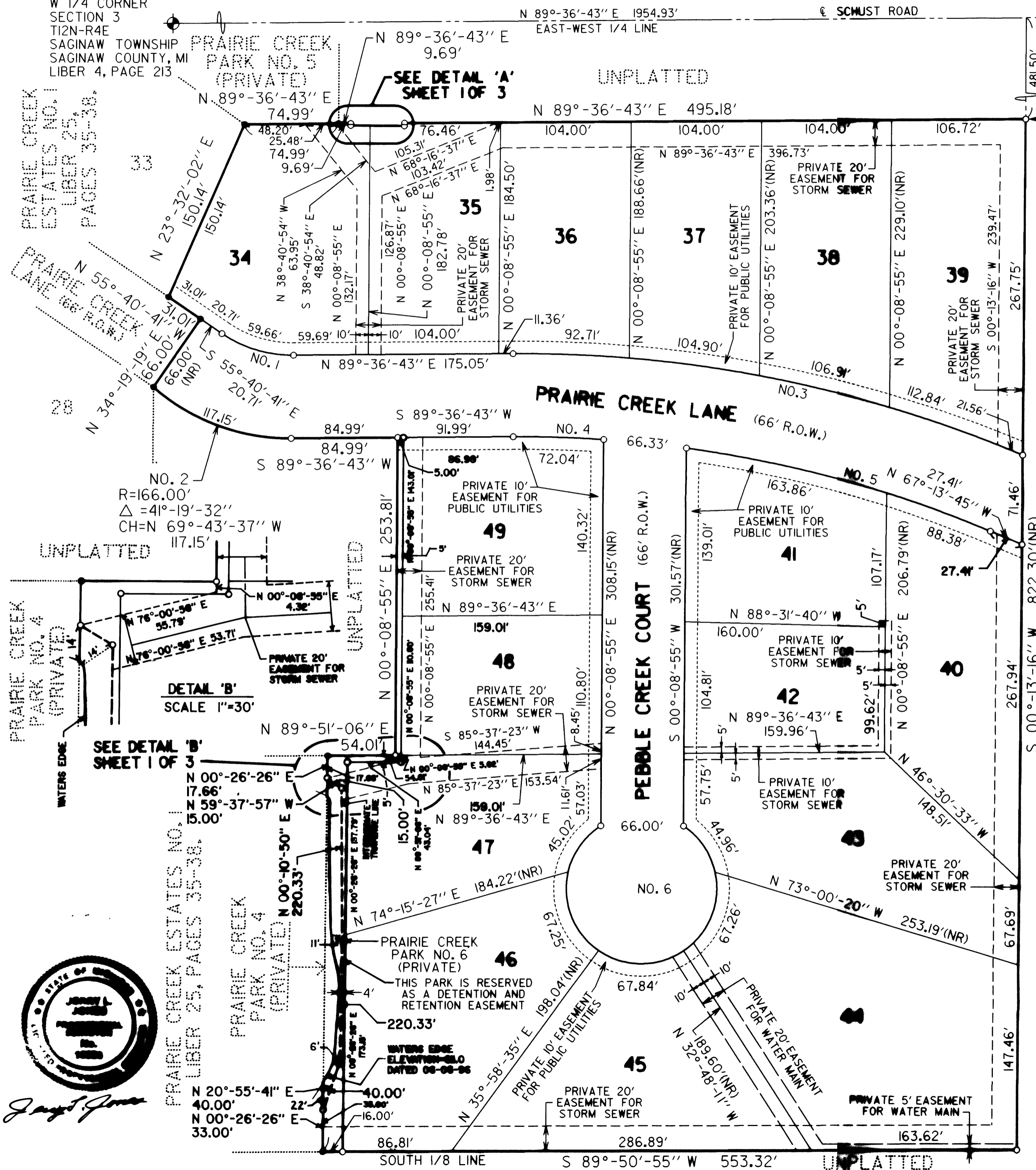
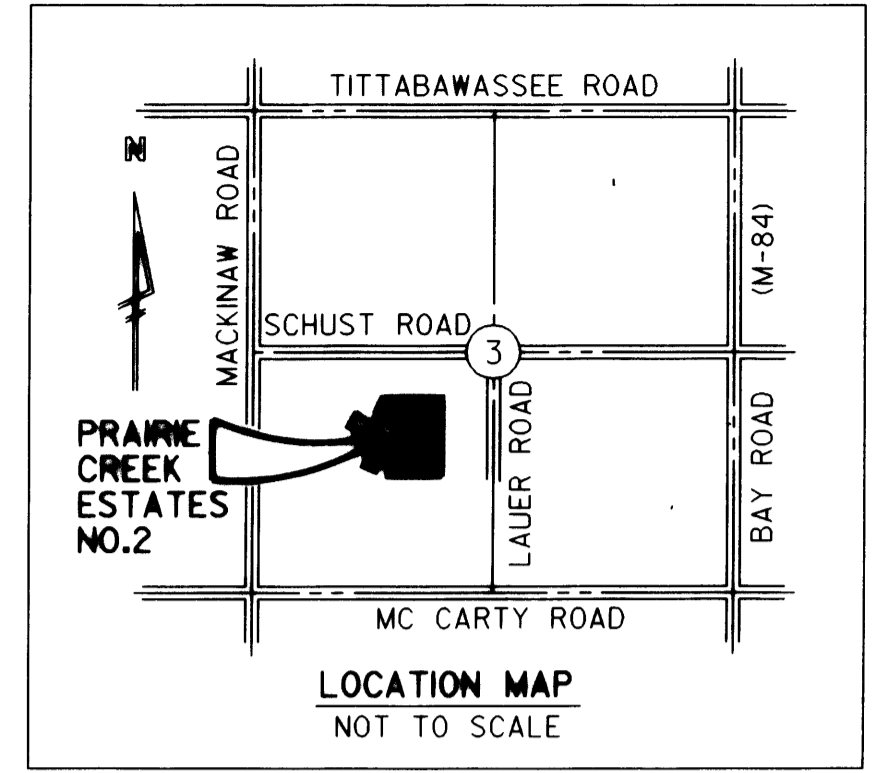


# PRAIRIE CREEK ESTATES NO. 2

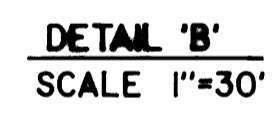
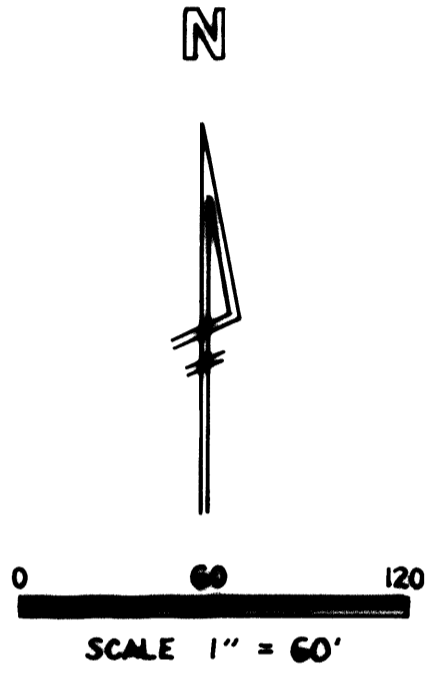
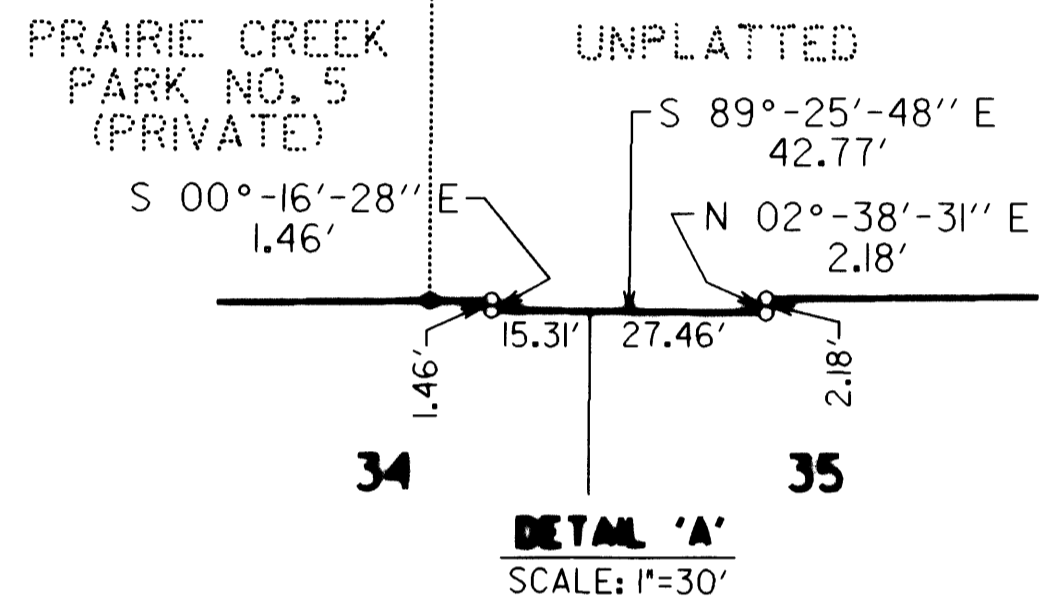
PART OF THE NORTH 1/2 OF THE SOUTHWEST 1/4 OF FRACTIONAL SECTION 3, T12N-R4E, SAGINAW TOWNSHIP, SAGINAW COUNTY, MICHIGAN

CENTER OF SECTION 3  
T12N-R4E  
SAGINAW TOWNSHIP  
SAGINAW COUNTY, MI  
LIBER 2, PAGE 175  
LIBER 4, PAGE 180

W 1/4 CORNER  
SECTION 3  
T12N-R4E  
SAGINAW TOWNSHIP  
SAGINAW COUNTY, MI  
LIBER 4, PAGE 213



POINT OF BEGINNING  
N 89°-36'-43'' E, 1954.93'  
AND S 00°-13'-16'' W,  
481.50' FROM THE  
WEST 1/4 CORNER,  
SECTION 3, T12N-R4E.



CURVE DATA					
CURVE NO.	RADIUS	CENTRAL ANGLE	TANGENT	BEARING	CHORD
NO. 1	100.00'	34°-42'-36"	31.25'	S 73°-01'-59" E	59.66'
NO. 2	166.00'	41°-19'-32"	62.60'	N 69°-43'-37" W	117.15'
NO. 3	1033.00'	23°-09'-32"	211.66'	S 78°-48'-31" E	414.70'
NO. 4	967.00'	4°-16'-10"	36.05'	N 88°-15'-12" W	72.04'
NO. 5	967.00'	14°-57'-31"	126.95'	N 74°-42'-31" W	251.74'
NO. 6	60.00'	293°-15'-58"	-----	N 89°-51'-05" W	66.00'

\*\*\* LEGEND \*\*\*

- ALL DIMENSIONS ARE IN FEET.
- ALL CURVE DIMENSIONS ARE CHORD DIMENSIONS.
- CONCRETE MONUMENTS, BEING A 1/2 INCH STEEL ROD, 36 INCHES LONG, COMPLETELY ENCASED IN CONCRETE, 4 INCHES IN DIAMETER, HAVE BEEN PLACED AT ALL POINTS MARKED 'o'.
- LOT CORNERS HAVE BEEN MARKED WITH A 3/4 INCH STEEL PIPE, 18 INCHES LONG, W/PLASTIC CAP STAMPED 'AYRES 19838'.
- BEARINGS WERE ESTABLISHED FROM THE PLAT OF PRAIRIE CREEK ESTATES NO. 1 RECORDED IN LIBER 25, ON PAGES 35-38.
- (R) DENOTES A RADIAL LINE.
- (NR) DENOTES A NON-RADIAL LINE.
- FOUND MONUMENT MARKED 'o'. SAME AS IN ITEM 3 ABOVE.

RECORDING CERTIFICATE  
STATE OF MICHIGAN )  
SAGINAW COUNTY )  
THIS PLAT WAS RECEIVED FOR RECORD ON  
THE 27th DAY OF January, 1987  
AT 10:05 P.M. AND RECORDED IN  
LIBER 27 OF PLATS ON PAGES 47, 48 AND 49  
*Mildred Dodak*  
MILDRED DODAK, REGISTER OF DEEDS



*James J. Jones*