

# REPPUHN SUBDIVISION

## A PART OF N.W. 1/4 OF SECTION 15, T.12N.-R.4E. SAGINAW TOWNSHIP - SAGINAW COUNTY - MICHIGAN

SCALE: 1 INCH = 200 FEET

ALL DIMENSIONS ARE GIVEN IN FEET AND DECIMALS THEREOF

THE SPICER ENGINEERING COMPANY  
SAGINAW, MICHIGAN  
1953

### DEDICATION

KNOW ALL MEN BY THESE PRESENTS, That we, David E. Reppuhn and Frieda Reppuhn, his wife, as proprietors, have caused the land embraced in the annexed plat to be surveyed, laid out and platted to be known as REPPUHN SUBDIVISION, A Part Of N.W. 1/4 Of Section 15, T.12 N.-R.4 E., Saginaw Township, Saginaw County, Michigan, and that the roads, drives and streets, as shown on said plat are hereby dedicated to the use of the public, excepting however, from this dedication land designated "Two Foot Reservation", such land to be dedicated automatically for street purposes at such time as street extensions adjacent thereto are dedicated in adjoining property.

Signed and Sealed in the Presence of )

Joseph L. Scorsone

Betty E. Scorsone

David E. Reppuhn (L.S.)

Frieda Reppuhn (L.S.)

### ACKNOWLEDGMENT

STATE OF MICHIGAN)  
County of Saginaw) ss.

On this 9th day of February 1954 before me, a Notary Public, in and for said County, personally came the above named David E. Reppuhn and Frieda Reppuhn, his wife, known to me to be the persons who executed the above dedication, and acknowledged the same to be their free act and deed.

My Commission Expires May 16, 1954

Estelle M. Bryan  
Notary Public, Saginaw County, Michigan

### DESCRIPTION

The land embraced in the annexed plat of REPPUHN SUBDIVISION, A Part Of N.W. 1/4 Of Section 15, T.12 N.-R.4 E., Saginaw Township, Saginaw County, Michigan, is described as follows: Commencing at a point on the East and West 1/4 line of said Section 15, 513.10 feet N.89°-00'-15"W., along said line from the center of said Section; thence continuing N.89°-00'-15"W., 327.00 feet; thence N.00°-16'-00"W., 1298.96 feet; thence N.88°-38'-15"W., 127.35 feet; thence N.00°-05'-15"E., 1320.00 feet to the North Line of Section 15; thence S.88°-38'-15"E., on said Section line 523.37 feet; thence Due South 922.00 feet; thence N.88°-38'-15"W., 6.00 feet; thence Due South 398.00 feet; thence N.88°-38'-15"W., 45.00 feet; thence S.00°-37'-00"W., 1296.51 feet to the point of beginning.

### SURVEYOR'S CERTIFICATE

I hereby certify that the plat herein delineated is a correct one and that permanent metal monuments consisting of bars not less than one-half inch in diameter and 48 inches in length, or shorter bars of not less than one-half inch in diameter lapped over each other at least 6 inches with an over-all length of not less than 48 inches, encased in a concrete cylinder at least 4 inches in diameter and 48 inches in depth have been placed at points marked thus o as thereon shown at all angles in the boundaries of the land platted, at all the intersections of streets, at angle points in street lines and at the intersections of streets with the boundaries of the plat.

Clifford H. Spicer-Registered Land Surveyor

### COUNTY TREASURER'S CERTIFICATE RELATING TO TAXES (Sec. 135, Act 206, 1893, as amended - Sec. 4134, C.L. 1915.) Office of County Treasurer, Saginaw County

I hereby certify, that there are no tax liens or titles held by the State on the lands described hereon, and that there are no tax liens or titles held by individuals on said lands for the five years preceding the 9th day of February 1954 and that the taxes for said period of five years are all paid, as shown by the records of this office.

This certificate does not apply to taxes, if any, now in process of collection by township, city or village collecting officers.

Carl O. Little  
County Treasurer

### CERTIFICATE OF MUNICIPAL APPROVAL

This plat was approved by the Township Board of the Township of Saginaw at a meeting held April 1 - 1954 (Date)

Walter Dietzel  
Township Clerk

### CERTIFICATE OF APPROVAL BY THE COUNTY PLAT BOARD

This plat was approved by the County Plat Board of Saginaw County, Michigan, this 6th day of April 1954

Clara P. Turek  
Clara P. Turek, Register of Deeds, Chairman

Peter Girard  
Peter Girard, Auditor

George Cavanaugh  
George Cavanaugh, Auditor

Charles E. Tafa, Jr.  
Charles E. Tafa, Jr., Auditor

### CERTIFICATE OF APPROVAL BY BOARD OF COUNTY ROAD COMMISSIONERS

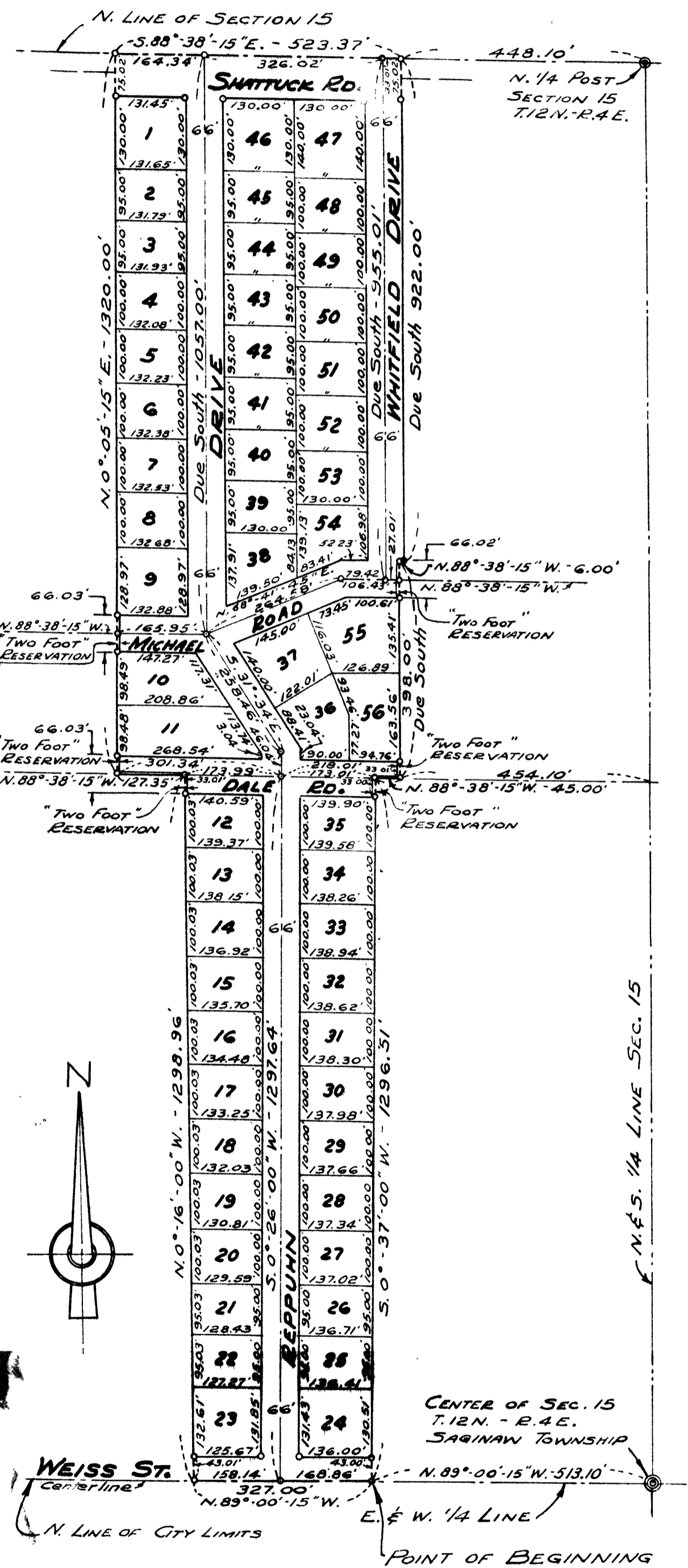
This plat has been examined and was approved on the 30th day of MARCH 1954 by the Saginaw County Board of Road Commissioners.

The Board of Road Commissioners of Saginaw, Michigan, assumes no responsibility for the improvement or maintenance of the streets and roads shown on this plat until such time as they have been graded and drained with the necessary drainage structures installed and a gravel, slag, or cinder surface having a compacted thickness of at least 6 inches and a width of at least 18 feet has been applied and approved by this board.

Frank Dudewicz  
Frank Dudewicz, Chairman

William H. Trim  
William H. Trim, Member

Albert M. Willie  
Albert M. Willie, Member



COPY  
Register's Office  
Saginaw County, Mich.  
Plat of Reppuhn Subdivision  
Saginaw Township  
was Recorded this 12 day of  
April A.D., 1954 at 9 o'clock  
A.M. in Liber 8 of Plats  
in Page 10  
Clara P. Turek  
Register of Deeds

I hereby certify that this copy is a true copy of the map or plot forwarded the Register of Deeds for recording  
Date April 9, 1954  
Filed in Auditor General's Dept.  
Date April 13, 1954  
Examined and Approved  
Date April 9, 1954  
John B. Mott  
Auditor General  
PLAT ENGINEER