

RIDGEDALE HAMLET

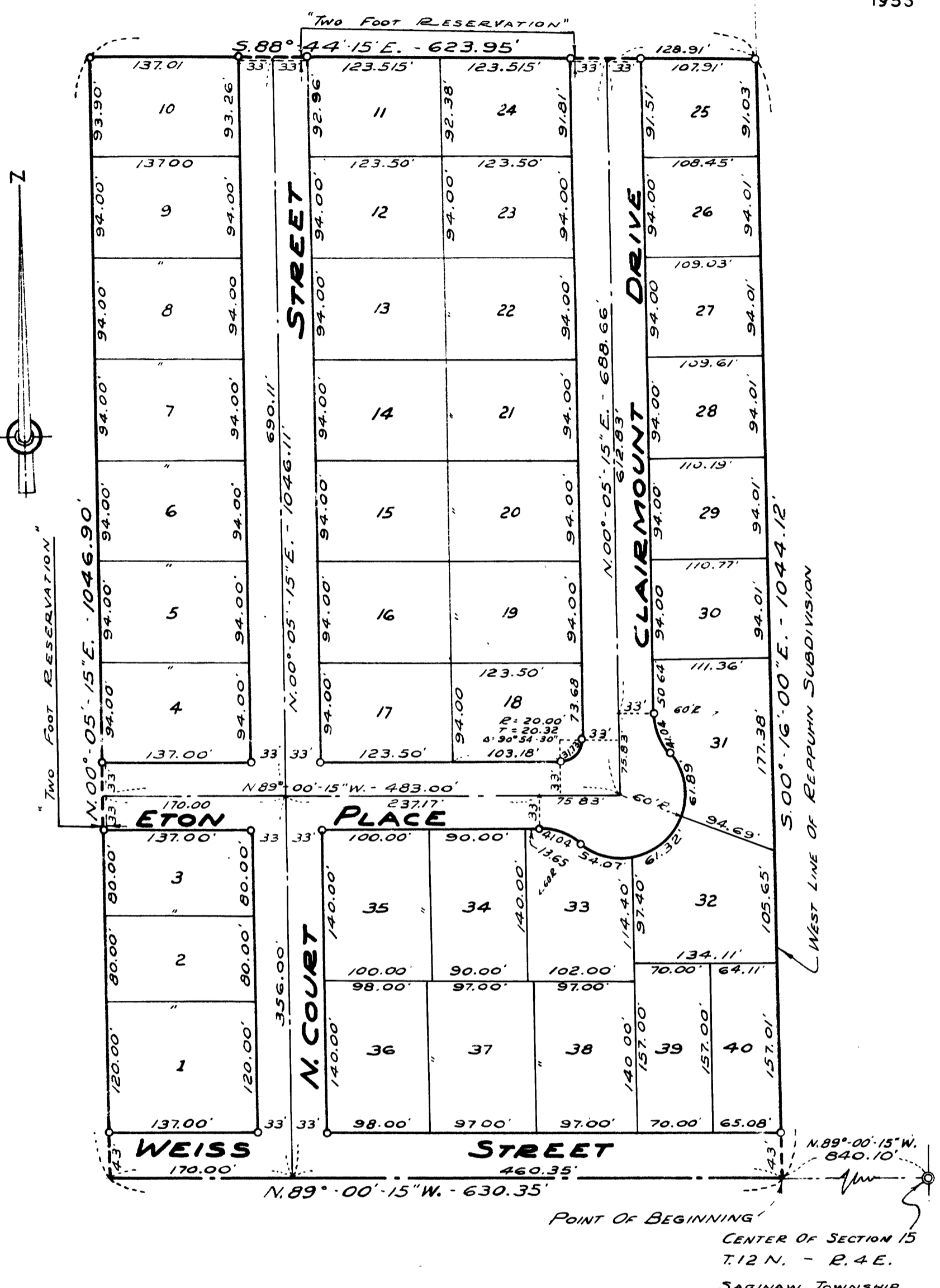
A PART OF N.W. 1/4 SECTION 15, T.12 N. - R.4 E.

SAGINAW TOWNSHIP, SAGINAW COUNTY, MICHIGAN

SCALE: 1 INCH = 100 FEET
 ALL DIMENSIONS ARE GIVEN IN FEET AND DECIMALS THEREOF
 THE SPICER ENGINEERING COMPANY
 SAGINAW, MICHIGAN
 1955

COPY
 Register's Office
 Saginaw County, ss.
 Plat of Ridgedale Hamlet
 was Recorded this 7 day of June
A.M. in Liber 1 of Books
 on Page 3
 ORIGINAL ON FILE

I hereby certify this copy is a true copy of map & plat forwarded the Register of Deeds for recording.
 Date June 1, 1955
 Filed in Book 3 of Plat Dept.
 Date June 15, 1955
 Exam and unc approved
 Date June 1, 1955
Walter W. Fuhrhop
 Auditor General
 By W. M. Bryan
 Plat Engineer



DEDICATION

KNOW ALL MEN BY THESE PRESENTS, That we, Walter W. Fuhrhop and Betty J. Fuhrhop, his wife; and Joseph A. Crook and Madge M. Crook, his wife, as proprietors, have caused the land embraced in the annexed plat to be surveyed, laid out and platted, to be known as RIDGEDALE HAMLET, A Part Of N.W. 1/4, Section 15, T.12 N.-R.4 E., Saginaw Township, Saginaw County, Michigan, and that the streets, drive and place as shown on said plat are hereby dedicated to the use of the public, Excepting however, from this dedication, land designated "Two Foot Reservation," such land to be dedicated automatically for street purposes at such time as street extensions adjacent thereto are dedicated in adjoining property.

Walter W. Fuhrhop (L.S.)
 Walter W. Fuhrhop
 Signed and Sealed in the Presence of
Betty J. Fuhrhop (L.S.)
 Betty J. Fuhrhop
Joseph A. Crook (L.S.)
 Joseph A. Crook
Madge M. Crook (L.S.)
 Madge M. Crook

ACKNOWLEDGMENT

STATE OF MICHIGAN) ss.
 County of Saginaw) ss.
 On this 7 day of June, 1955, before me, a Notary Public, in and for said County, personally came the above named Walter W. Fuhrhop and Betty J. Fuhrhop, his wife; and Joseph A. Crook and Madge M. Crook, his wife, known to me to be the persons who executed the above dedication and acknowledged the same to be their free act and deed.
 My Commission Expires May 16, 1958
Estelle M. Bryan
 Notary Public, Saginaw County, Michigan

DESCRIPTION

The land embraced in the annexed plat of RIDGEDALE HAMLET, A Part Of N.W. 1/4, Section 15, T.12 N.-R.4 E., Saginaw Township, Saginaw County, Michigan, is described as follows: Commencing at a point on the East and West 1/4 line of said Section 15, 810.10 feet N.89°-00'-15"W., along said line from the center of said Section; thence continuing N.89°-00'-15"W., on said East and West 1/4 line 630.35 feet; thence N.00°-05'-15"E., 1046.90 feet; thence S.88°-44'-15"E., 632.95 feet to the West line of Reppuhn Subdivision; thence S.00°-16'-00"E., on said plat line 1044.12 feet to the point of beginning.

SURVEYOR'S CERTIFICATE

I hereby certify that the plat hereon delineated is a correct one and that permanent metal monuments consisting of bars not less than one-half inch in diameter and 36 inches in length, or shorter bars of not less than one-half inch in diameter lapped over each other at least 6 inches with an over-all length of not less than 36 inches, encased in a concrete cylinder at least 4 inches in diameter and 36 inches in depth have been placed at points marked thus o as thereon shown at all angles in the boundaries of the land platted, at all intersections of streets, at points of curvature and points of tangency in street lines, and at the intersections of streets with the boundaries of the plat as shown on said plat.

Clifford H. Spicer
 Clifford H. Spicer, Registered Land Surveyor

COUNTY TREASURER'S CERTIFICATE RELATING TO TAXES
 (Sec.135, Act 206, 1893 as amended - Sec. 4134, C.L. 1915.)
 Office of County Treasurer, Saginaw County

I hereby certify, that there are no tax liens or titles held by the State on the lands described hereon, and that there are no tax liens or titles held by individuals on said lands, for the five years preceding the 7th day of June, 1955, and that the taxes for said period of five years are all paid, as shown by the records of this office.

This certificate does not apply to taxes, if any, now in process of collection by township, city or village collecting officers.
Carl O. Little
 Carl O. Little, County Treasurer

CERTIFICATE OF APPROVAL BY THE COUNTY PLAT BOARD

This plat was approved by the County Plat Board of Saginaw County, Michigan this 20th day of May, 1955.

Clara P. Turek
 Clara P. Turek, Register of Deeds-Chairman
Peter Girard
 Peter Girard, Auditor
George Javataugh
 George Javataugh, Auditor
William A. Case
 William A. Case, Auditor

CERTIFICATE OF APPROVAL BY BOARD OF COUNTY ROAD COMMISSIONERS

This plat has been examined and was approved on the 26th day of April, 1955 by the Saginaw County Board of Road Commissioners.

The Board of Road Commissioners of Saginaw County, Michigan, assumes no responsibility for the improvement or maintenance of the streets and roads shown on this plat until such time as they have been graded and drained with the necessary drainage structures installed and a gravel, slag, or cinder surface having a compacted thickness of at least 6 inches and a width of at least 18 feet has been applied and approved by this board.

Albert M. Wille
 Albert M. Wille, Chairman
William M. Trim
 William M. Trim, Member
Frank Dudewicz
 Frank Dudewicz, Member

CERTIFICATE OF MUNICIPAL APPROVAL

This plat was approved by the Township Board of the Township of Saginaw at a meeting held May 11, 1955.

Walter Dietzel
 Walter Dietzel, Clerk

CERTIFICATE OF APPROVAL BY CITY PLANNING COMMISSION

This plat was approved by the City Planning Commission of the City of Saginaw, Michigan, at a meeting held November 23, 1954.

Russel O. Koenig
 Russel O. Koenig, Director