

# RIVER FOREST SUBDIVISION

A PART OF THE WEST FRACTIONAL HALF OF SECTION 32 T.12N-R.4E.

SAGINAW TOWNSHIP, SAGINAW COUNTY, MICHIGAN

SCALE: 1 INCH = 100 FEET

0 50 100 200 300 400

ALL DIMENSIONS ARE GIVEN IN FEET AND DECIMALS THEREOF

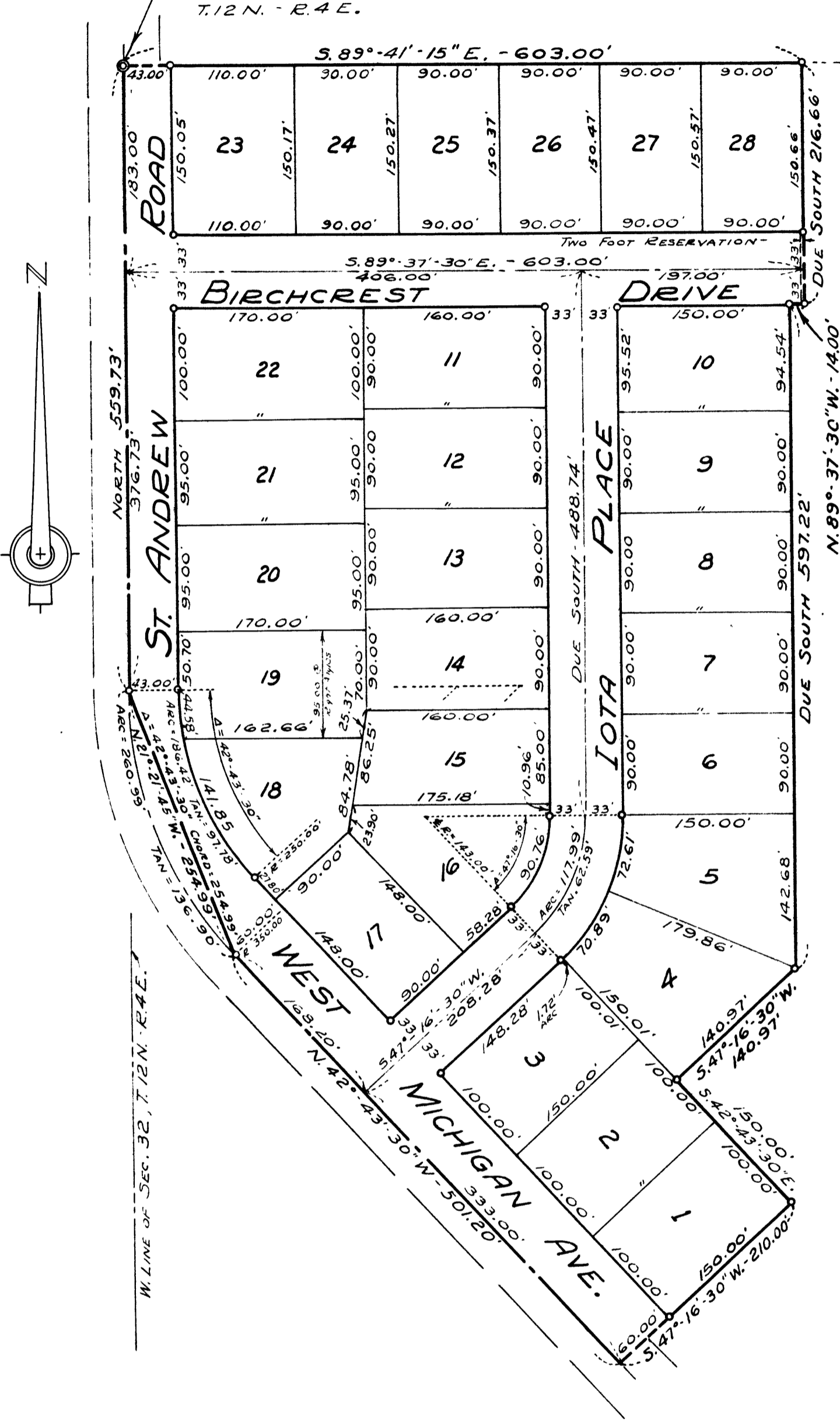
THE SPICER ENGINEERING COMPANY

SAGINAW, MICHIGAN

1955

POINT OF BEGINNING  
N.W. CORNER OF SECTION 32  
T.12 N. - R.4 E.

N. LINE OF SECTION 32, T.12N-R.4E.



## DEDICATION

KNOW ALL MEN BY THESE PRESENTS, That we, Arthur J. Stadelmeyer and Bida Stadelmeyer, his wife, as proprietors, have caused the land embraced in the annexed plat to be surveyed, laid out and platted to be known as RIVER FOREST SUBDIVISION, A Part Of The West Fractional Half Of Section 32, T.12 N.-R.4 E., Saginaw Township, Saginaw County, Michigan, and that the avenue, drive and place as shown on said plat are hereby dedicated to the use of the public, Excepting, however, from this dedication land designated "Two Foot Reservation," such land to be dedicated automatically for street purposes at such time as street extensions adjacent thereto are dedicated in adjoining property.

Signed and Sealed in the Presence of

Arthur J. Stadelmeyer (L.S.)

Clifford H. Spicer

Bida Stadelmeyer (L.S.)

Elmer Spaedt

## ACKNOWLEDGMENT

STATE OF MICHIGAN) ss.  
County of Saginaw)

On this 4th day of August 1955 before me, a Notary Public in and for said County, personally came the above named Arthur J. Stadelmeyer and Bida Stadelmeyer, his wife, known to me to be the persons who executed the above dedication and acknowledged the same to be their free act and deed.

My Commission Expires May 16, 1958

Estelle M. Bryan  
Notary Public, Saginaw County, Michigan

## DESCRIPTION

The land embraced in the annexed plat of RIVER FOREST SUBDIVISION, A Part Of The West Fractional Half Of Section 32, T.12 N.-R.4 E., Saginaw Township, Saginaw County, Michigan, is described as follows: Beginning at the Northwest corner of said Section 32; thence S.89°-41'-15"E., on the North line of said Section, 603.00 feet; thence Due South parallel to St. Andrew Road 216.66 feet; thence N.89°-37'-30"W., 14.00 feet; thence Due South 597.22 feet; thence S.47°-16'-30"W., 140.97 feet; thence S.42°-43'-30"E., 150.00 feet; thence S.47°-16'-30"W., 210.00 feet to the centerline of W. Michigan Avenue; thence N.42°-43'-30"W., along said centerline 501.20 feet to the point of curvature of a curve to the right, said curve having a radius of 350.00 feet and a delta angle of 42°-43'-30"; thence Northerly on the arc of said curve 260.99 feet to the point of tangency thereof; the subtending chord of said curve bears N.21°-21'-45"W., and is 254.99 feet in length; thence Due North on the centerline of St. Andrew Road 559.73 feet to the point of beginning. This plat consists of 28 Lots numbered consecutively from 1 to 28 inclusive.

## SURVEYOR'S CERTIFICATE

I hereby certify that the plat hereon delineated is a correct one and that permanent metal monuments consisting of bars not less than one-half inch in diameter and 36 inches in length, or shorter bars of not less than one-half inch in diameter lapped over each other at least 6 inches with an over-all length of not less than 36 inches, encased in a concrete cylinder at least 4 inches in diameter and 36 inches in depth have been placed at points marked thus o as thereon shown at all angles in the boundaries of the land platted, at all intersections of streets, at points of curvature and points of tangency in street lines, and at the intersections of streets with the boundaries of the plat as shown on said plat.

Clifford H. Spicer - Registered Land Surveyor

COUNTY TREASURER'S CERTIFICATE RELATING TO TAXES  
(Sec. 135, Act 206, 1893 as amended - Sec. 4134, C. L. 1915.)  
Office of County Treasurer, Saginaw County

I hereby certify, that there are no tax liens or titles held by the State on the land described hereon, and that there are no tax liens or titles held by individuals on said lands, for the five years preceding the 5th day of August 1955, and that the taxes for said period of five years are all paid, as shown by the records of this office.

This certificate does not apply to taxes, if any, now in process of collection by township, city or village collecting officers.

Carl O. Little - County Treasurer

## CERTIFICATE OF APPROVAL BY CITY PLANNING COMMISSION

This plat was approved by the City Planning Commission of the City of Saginaw, Michigan, at a meeting held on the 26th day of July 1955.

Russel O. Koenig - Director

## CERTIFICATE OF APPROVAL BY THE COUNTY PLAT BOARD

This plat was approved by the County Plat Board of Saginaw County, Michigan, this 6th day of October 1955.

Clara P. Turek, Register of Deeds - Chairman

Peter Girard - Auditor

George Cavanaugh - Auditor

William A. Case - Auditor

## CERTIFICATE OF APPROVAL BY BOARD OF COUNTY ROAD COMMISSIONERS

This plat has been examined and was approved on the 27th day of SEPTEMBER 1955 by the Saginaw County Board of Road Commissioners.

The Board of County Road Commissioners of Saginaw County, Michigan, assume no responsibility for the improvement or maintenance of the Roads or Streets shown on this Plat until such time as the following conditions have been met and approved by this Board.

All Roads and Streets are to be graded and drained with necessary drainage structures installed and a roadway surface, which shall consist of crushed stone or natural gravel conforming to Michigan State Highway Department Specifications 21A. The surface shall have a minimum width of 18 feet and a compacted thickness of 6 inches. When crushed stone is used the top 2 inches shall be 21A with screenings added to provide a dense wearing course.

Albert H. Wille - Chairman  
William M. Trim - Member  
Frank Dudewicz - Member

## CERTIFICATE OF MUNICIPAL APPROVAL

This plat was approved by the Township Board of the Township of Saginaw at a meeting held                      (Date)

Walter Dietzel - Clerk