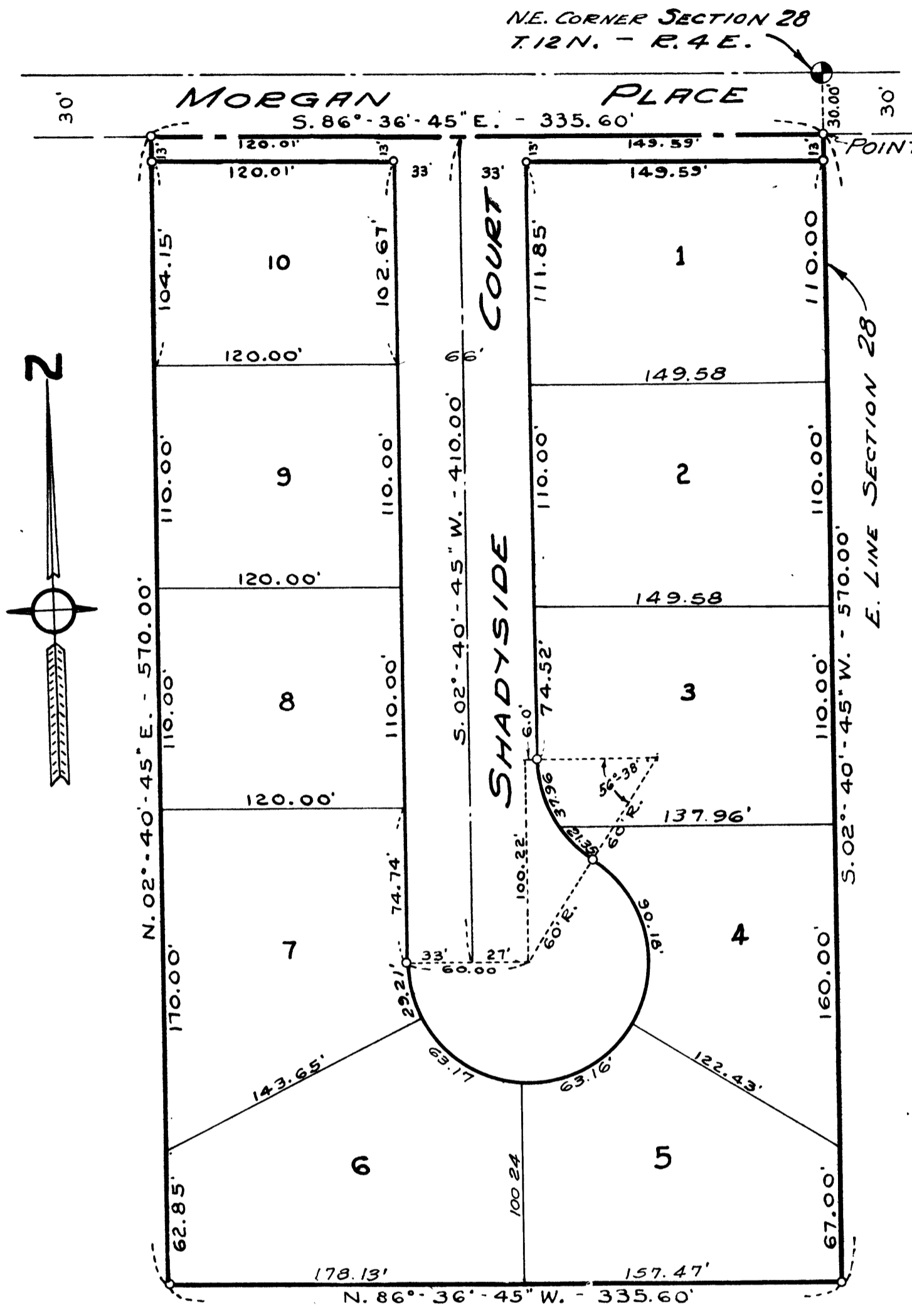


SHADYSIDE COURT PLAT

SECTION 28, TOWNSHIP 12 NORTH, RANGE 4 EAST SAGINAW TOWNSHIP - SAGINAW COUNTY, MICHIGAN

SCALE: 1 INCH = 60 FEET

ALL DIMENSIONS ARE GIVEN IN FEET AND DECIMALS
THE SPICER ENGINEERING COMPANY
SAGINAW - MICHIGAN
1952



DEDICATION

KNOW ALL MEN BY THESE PRESENTS, That we, David E. Reppuhn and Frieda Reppuhn, his wife, as proprietors, have caused the land embraced in the annexed plat to be surveyed, laid out and platted to be known as SHADYSIDE COURT PLAT, Section 28, Township 12 North, Range 4 East, Saginaw Township, Saginaw County, Michigan, and that the Court and additional width for Morgan Place, as shown on said plat, are hereby dedicated to the use of the public.

Signed and Sealed in the Presence of)

Otto U. Schlesswohl
Otto U. Schlesswohl
Elmer Spaedt
Elmer Spaedt

David E. Reppuhn
David E. Reppuhn
Frieda Reppuhn
Frieda Reppuhn

ACKNOWLEDGMENT

STATE OF MICHIGAN) ss.
County of Saginaw)

On this 22nd day of August 1952, before me, a Notary Public in and for said county, personally came the above named David E. Reppuhn and Frieda Reppuhn, his wife, known to me to be the persons who executed the above description, and acknowledged the same to be their free act and deed.

My Commission Expires May 16, 1954
Estelle M. Bryan
Estelle M. Bryan
Notary Public, Saginaw County, Michigan

DESCRIPTION

The land embraced in the annexed plat of SHADYSIDE COURT PLAT, Section 28, Township 12 North, Range 4 East, Saginaw Township, Saginaw County, Michigan, is a part of the N.E. 1/4 of the N.E. 1/4 of said Section 28 and is described as follows: Commencing at a point on the East line of said Section 28, S. 02°-40'-45"W., 30.00 feet along said line from the Northeast corner of said Section; thence S. 02°-40'-45"W., on said Section line 570.00 feet; thence N. 36°-36'-45"W., 335.60 feet; thence N. 02°-40'-45"E., parallel to the East line of said Section 28, 570.00 feet; thence S. 86°-36'-45"E., parallel to the North line of said Section and 30.00 feet South thereof, measured at right angles, 335.60 feet to the point of beginning.

SURVEYOR'S CERTIFICATE

I hereby certify that the plat hereon delineated is a correct one and that permanent metal monuments consisting of bars not less than one-half inch in diameter and 48 inches in length, or shorter bars of not less than one-half inch in diameter lapped over each other at least 6 inches with an over-all length of not less than 48 inches, encased in a concrete cylinder at least 4 inches in diameter and 48 inches in depth have been placed at points marked thus o as thereon shown at all angles in the boundaries of the land platted, at all the intersections of streets, at points of curvature and points of tangency of streets, and at the intersections of streets with the boundaries of the plat as shown on said plat.

Clifford H. Spicer
Clifford H. Spicer - Registered Land Surveyor

CERTIFICATE OF APPROVAL BY THE BOARD OF COUNTY AUDITORS

This plat was approved by The Board of County Auditors of Saginaw County, Michigan this 27th day of August 1952.

Peter Girard
Peter Girard
George Cavanaugh
George Cavanaugh
Charles E. Tafaoy, Jr.
Charles E. Tafaoy, Jr.

CERTIFICATE OF APPROVAL BY CITY PLANNING COMMISSION

This plat was approved by the City Planning Commission of the City of Saginaw, Michigan, at a meeting held August 26, 1952.

Russel O. Koenig
Russel O. Koenig
Planning Director

CERTIFICATE OF APPROVAL BY BOARD OF COUNTY ROAD COMMISSIONERS

This plat has been examined and was approved on the 22nd day of August 1952, by the Saginaw County Board of Road Commissioners.

The Board of Road Commissioners of Saginaw, Michigan, assumes no responsibility for the improvement or maintenance of the streets and roads shown on this plat until such time as they have been graded and drained with the necessary drainage structures installed and a travel, slag, or similar surface having a compacted thickness of at least 6 inches and a width of at least 18 feet has been applied and approved by this board.

William M. Trim
William M. Trim
Chairman
Walter F. Graebner
Walter F. Graebner
Member
Frank Dudewicz
Frank Dudewicz
Member

I HEREBY CERTIFY THAT THIS COPY IS A TRUE COPY OF THE MAP OR PLAT FORWARDED THE REGISTER OF DEEDS FOR RECORDING.

COMPARED September 16, 1952
Mayme Jewell Purdy
DEPUTY AUDITOR GENERAL
Mayme Jewell Purdy

COUNTY TREASURER'S CERTIFICATE RELATING TO TAXES

(Sec. 135, Act 206, 1893, as amended - Sec. 4134, C.L. 1915.)
Office of County Treasurer, Saginaw County

I hereby certify, that there are no tax liens or titles held by the State on the lands described hereon, and that there are no tax liens or titles held by individuals on said lands for the five years preceding the 22nd day of August 1952 and that the taxes for said period of five years are all paid, as shown by the records of this office.

This certificate does not apply to taxes, if any, now in process of collection by township, city or village collecting officers.

Carl C. Little
Carl C. Little
County Treasurer

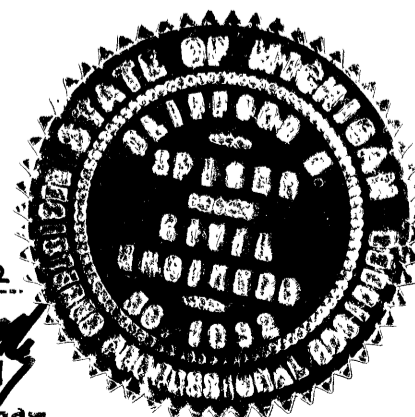
CERTIFICATE OF MUNICIPAL APPROVAL

This plat was approved by the Township Board of the Township of Saginaw at a meeting held August 22, 1952 (date).

Meldron W. McLean
Meldron W. McLean
Clerk

Examined and Approved

September 16, 1952
Mayme Jewell Purdy
DEPUTY AUDITOR GENERAL
Mayme Jewell Purdy



FILED IN AUDITOR GENERAL'S DEPT.

September 23, 1952
Mayme Jewell Purdy
DEPUTY AUDITOR GENERAL
Mayme Jewell Purdy

COPY

Register's Office }
Saginaw County, } ss.
Plat of Shadyside Court Plat
Saginaw Township
was Recorded this 19 day of
September A.D., 1952 at 9 o'clock
A.M. in Liber 7 of Plats
on Page 8
Clara P. Jurek
Register of Deeds
ORIGINAL ON FILE