

SHEPHERD PARK

A PART OF S.E. 1/4 OF S.E. 1/4 - SECTION 8, T.12 N.-R.4 E.
SAGINAW TOWNSHIP-SAGINAW COUNTY - MICHIGAN.

CERTIFICATE OF APPROVAL BY THE COUNTY PLAT BOARD

This plat was approved by the County Plat Board of Saginaw County, Michigan, this 25th day of July 1957.

Clara P. Turek
Clara P. Turek, Register of Deeds-Chairman
Peter Girard Auditor
William A. Case Auditor
John H. Deibel Auditor

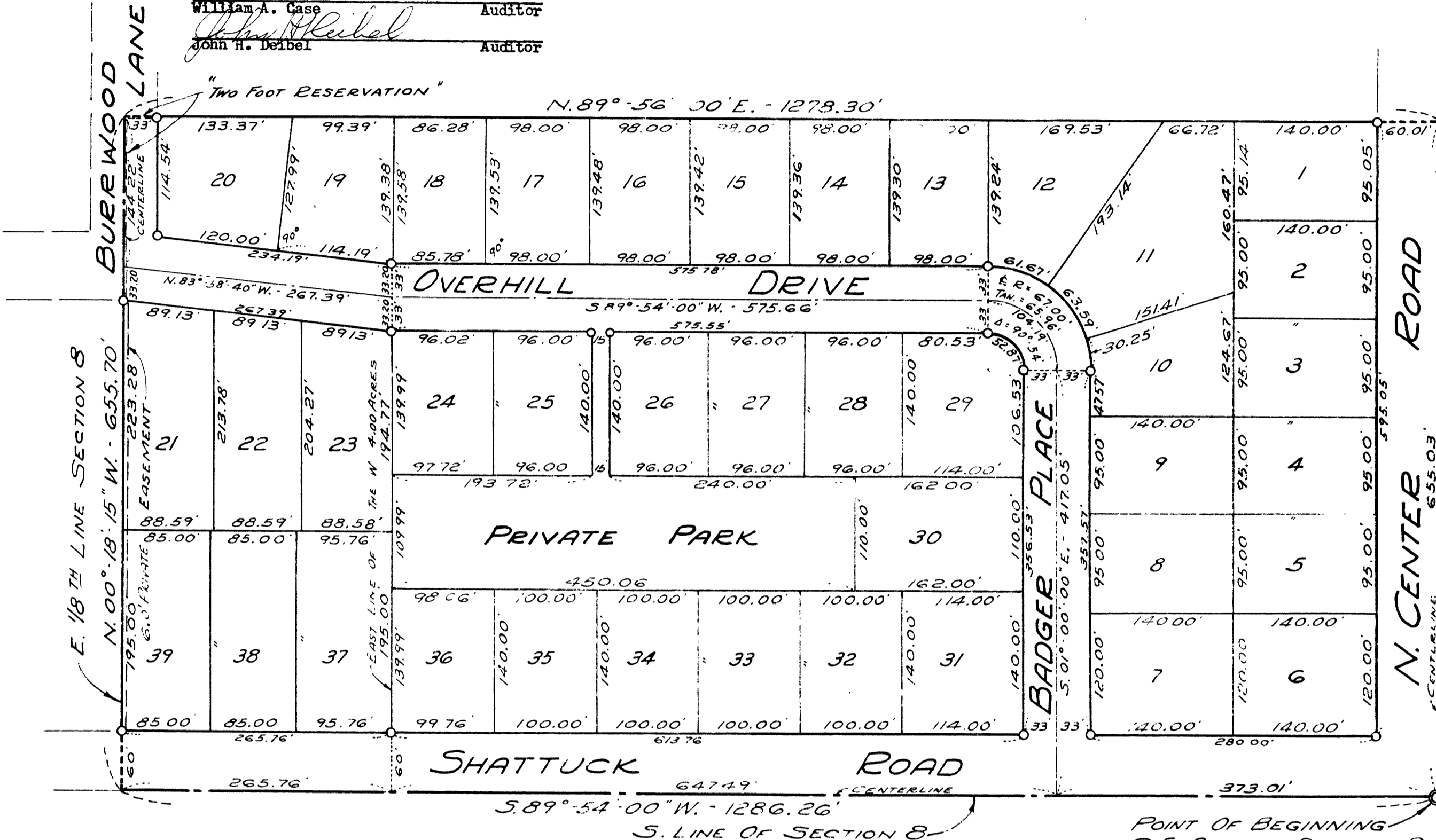
SCALE: 1 INCH=100 FEET
0 50 100 200 300 400
ALL DIMENSIONS ARE GIVEN IN FEET AND DECIMALS THEREOF
THE SPICER ENGINEERING COMPANY
SAGINAW, MICHIGAN
1957

CERTIFICATE OF APPROVAL BY CITY PLANNING COMMISSION

This plat was approved by the City Planning Commission of the City of Saginaw, Michigan, at a meeting held on the 25th day of June 1957.

John B. Dempsey
John B. Dempsey, Director

Register's Office
Saginaw County, ss.
Plat of Shepherd Park
was Recorded this 19th day of July 1957 at 10:00 o'clock
P.M. in Liber. 11 of 1957
Page 120
Register of Deeds
ORIGINAL ON FILE



DESCRIPTION

The land embraced in the annexed plat of SHEPHERD PARK, A Part of S.E. 1/4 of S.E. 1/4, Section 8, T.12 N.-R.4 E., Saginaw Township, Saginaw County, Michigan, is described as follows: Commencing at the Southeast corner of said Section 8; thence S.89°-54'-00"W., along the South line of said Section 1286.26 feet to the East 1/8th line; thence N.00°-18'-15"W., along said eighth line 655.70 feet; thence S.01°-00'-00"E., along said East line, 655.03 feet to the point of beginning. This plat contains 39 Lots numbered consecutively from 1 to 39 inclusive.

SURVEYOR'S CERTIFICATE

I hereby certify that the plat herein delineated is a correct one and that permanent metal monuments consisting of bars not less than one-half inch in diameter and 36 inches in length, or shorter bars of not less than one-half inch in diameter lapped over each other at least 6 inches with an over-all length of not less than 36 inches, encased in a concrete cylinder at least 4 inches in diameter and 36 inches in depth have been placed at points marked thus o as thereon shown at all angles in the boundaries of the land platted, at all intersections of streets, at points of curvature and points of tangency in street lines, and at the intersections of streets with the boundaries of the plat as shown on said plat.

Clifford H. Spicer
Clifford H. Spicer-Registered Land Surveyor

CERTIFICATE OF APPROVAL BY BOARD OF COUNTY ROAD COMMISSIONERS

This plat has been examined and was approved on the 25th day of June 1957 by the Saginaw County Board of Road Commissioners.

The Board of County Road Commissioners of Saginaw County, Michigan, assume no responsibility for the improvement or maintenance of the Roads or Streets shown on this Plat until such time as the following conditions have been met and approved by this Board.

All Roads and Streets are to be graded and drained with necessary drainage structures installed and a roadway surface, which shall consist of crushed stone or natural gravel conforming to Michigan State Highway Department Specifications 21A. The surface shall have a minimum width of 18 feet and a compacted thickness of 6 inches. When crushed stone is used the top 2 inches shall be 21A with screenings added to provide a dense wearing course.

William M. Trim Chairman
Frank Dudewicz Member
Harold H. Bauer Member

COUNTY TREASURER'S CERTIFICATE RELATING TO TAXES
(Sec. 135, Act 206, 1893 as amended - Sec. 4134, C. L. 1915.)
Office of County Treasurer, Saginaw County

I hereby certify, that there are no tax liens or titles held by the State on the land described hereon, and that there are no tax liens or titles held by individuals on said lands, for the five years preceding the 12th day of June 1957, and that the taxes for said period of five years are all paid, as shown by the records.

This certificate does not apply to taxes, if any, now in process of collection by township, city or village collecting officers.

Carl O. Little
Carl O. Little, County Treasurer

KNOW ALL MEN BY THESE PRESENTS, That we, Elmer W. Shepherd and Irene Shepherd, his wife; Alexander Kazuk and Venice E. Kazuk, his wife, as proprietors, and the First Savings and Loan Association, a Michigan Corporation, by Maurice W. Lamson, President and Richard F. Burmeister, Secretary, as mortgagee, have caused the land embraced in the annexed plat to be surveyed, laid out and platted to be known as SHEPHERD PARK, A Part of S.E. 1/4 of S.E. 1/4, Section 8, T.12 N.-R.4 E., Saginaw Township, Saginaw County, Michigan, and that the Drive, Place, Roads, and Lane as shown on said plat are hereby dedicated to the use of the public, and that the Private Park as shown is hereby dedicated to the use of the owners of said plat. Excepting however, from this dedication, land designated "Two Foot Reservation," such land to be dedicated automatically for street purposes at such time as street extensions thereto are dedicated in adjoining property.

Elmer W. Shepherd (L.S.)
Elmer W. Shepherd
Irene Shepherd (L.S.)
Irene Shepherd
Alexander Kazuk (L.S.)
Alexander Kazuk
Venice E. Kazuk (L.S.)
Venice E. Kazuk
FIRST SAVINGS AND LOAN ASSOCIATION
By Maurice W. Lamson (L.S.)
Maurice W. Lamson, President
By Richard F. Burmeister (L.S.)
Richard F. Burmeister, Secretary

Signed and Sealed in the Presence of)
Estelle M. Bryan
Norma Wegner

ACKNOWLEDGMENT

STATE OF MICHIGAN)
County of Saginaw) ss.
On this 16th day of July 1957, before me, a Notary Public in and for said County, personally came the above named Elmer W. Shepherd and Irene Shepherd, his wife; Alexander Kazuk and Venice E. Kazuk, his wife, known to me to be the persons who executed the above dedication and acknowledged the same to be their free act and deed; also appeared Maurice W. Lamson and Richard F. Burmeister, to me personally known, who being each by me duly sworn did say that they are the President and Secretary, respectively, of the First Savings and Loan Association, a Michigan Corporation, and that the seal affixed to said instrument is the corporate seal of said Corporation and that said instrument was signed and sealed in behalf of said Corporation by authority of its Board of Directors and the said Maurice W. Lamson and Richard F. Burmeister, acknowledged said instrument to be the free act and deed of said Corporation.

Estelle M. Bryan
Estelle M. Bryan, Notary Public, Saginaw County, Michigan
My Commission Expires May 16, 1958

CERTIFICATE OF MUNICIPAL APPROVAL

This plat was approved by the Township Board of the Township of Saginaw at a meeting held on the 1st day of July 1957.

Walter Dietzel
Walter Dietzel, Township Clerk