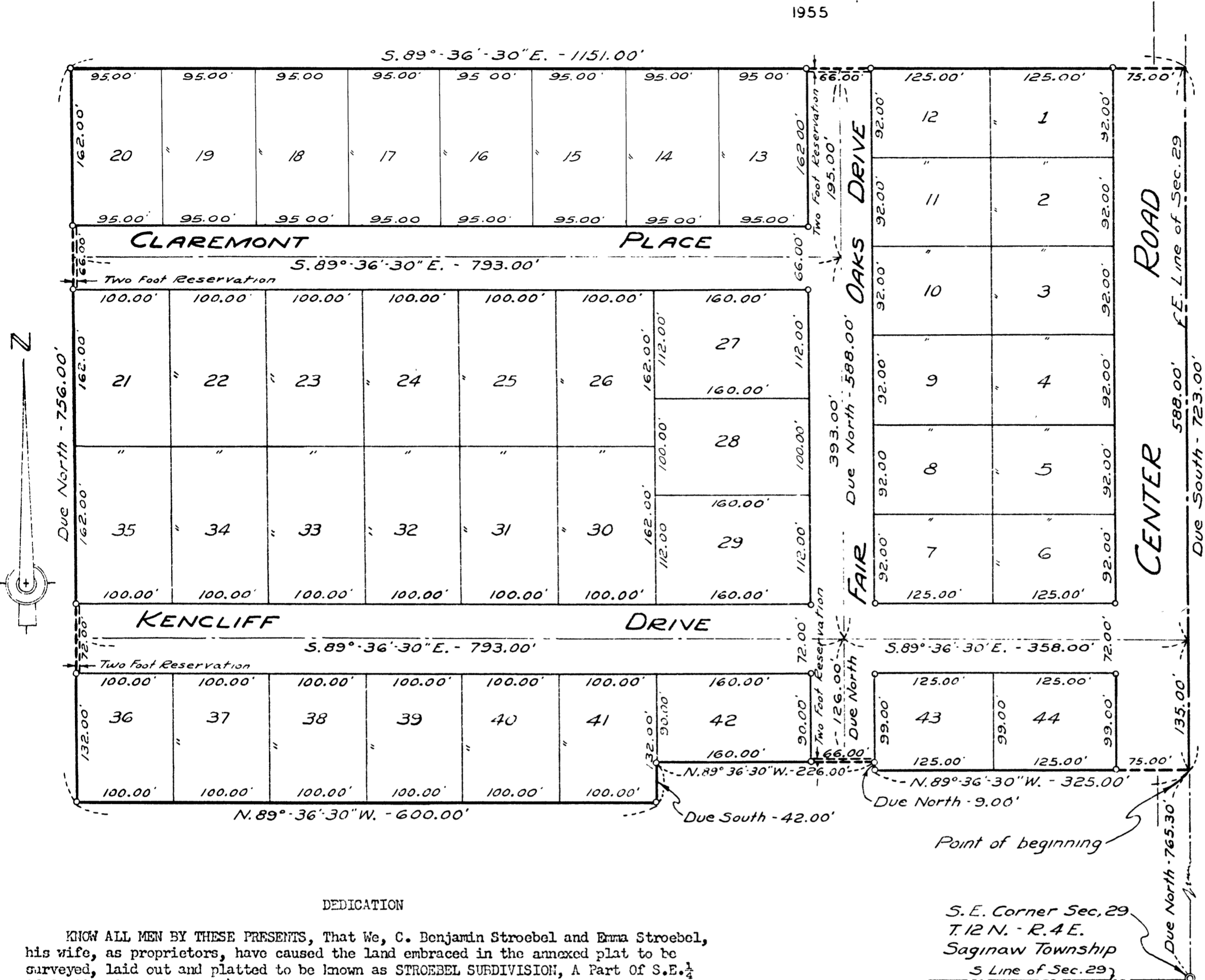


STROEBEL SUBDIVISION

A PART OF S.E. 1/4 OF SECTION 29, T.12N.-R.4E.
SAGINAW TOWNSHIP-SAGINAW COUNTY - MICHIGAN

SCALE: 1 INCH = 100 FEET
0 50 100 200 300 400
ALL DIMENSIONS ARE GIVEN IN FEET AND DECIMALS THEREOF
THE SPICER ENGINEERING COMPANY
SAGINAW, MICHIGAN
1955



Register's Office
Saginaw County
Stroebel Subdivision
Saginaw Township
5th day of
March 1956
A.M. to Lib. 9 Plat
Page 44
Clara F. Turek
Register of Deeds

March 2, 1956
March 6, 1956
March 2, 1956
Walter Dietzel
Clerk

CERTIFICATE OF MUNICIPAL APPROVAL
This plat was approved by the Township Board of the Township of Saginaw at a meeting held on the 24th day of Feb. 1956.
Walter Dietzel
Clerk

S. E. Corner Sec. 29
T. 12 N. - R. 4 E.
Saginaw Township
S Line of Sec. 29

DEDICATION

KNOW ALL MEN BY THESE PRESENTS, That We, C. Benjamin Stroebel and Emma Stroebel, his wife, as proprietors, have caused the land embraced in the annexed plat to be surveyed, laid out and platted to be known as STROEBEL SUBDIVISION, A Part of S.E. 1/4 of Section 29, T.12 N.-R.4 E., Saginaw Township, Saginaw County, Michigan, and that the road, drives and place as shown on said plat are hereby dedicated to the use of the public, Excepting however, from this dedication land designated "Two Foot Reservation," such land to be dedicated automatically for street purposes at such time as street extensions adjacent thereto are dedicated in adjoining property.

Signed and Sealed in the Presence of
George Schemm
George Schemm
Clarence Radewahn
ACKNOWLEDGMENT

STATE OF MICHIGAN) ss.
County of Saginaw)
On this 5th day of DECEMBER 1955, before me, a Notary Public, in and for said County, personally came the above named C. Benjamin Stroebel and Emma Stroebel, his wife, known to me to be the persons who executed the above dedication and acknowledged the same to be their free act and deed.
Clarence Radewahn
Notary Public, Saginaw County, Michigan
My Commission Expires 3-18-56
March 18, 1956

DESCRIPTION

The land embraced in the annexed plat of STROEBEL SUBDIVISION, A Part of S.E. 1/4 of Section 29, T.12 N.-R.4 E., Saginaw Township, Saginaw County, Michigan, is described as follows: Commencing at a point on the East line of said Section 29, 765.30 feet Due North along said line from the Southeast corner of said Section; thence N.89°-36'-30"W., 325.00 feet; thence Due North 9.00 feet; thence N.89°-36'-30"W., 226.00 feet; thence Due South 42.00 feet; thence N.89°-36'-30"W., 600.00 feet; thence Due North parallel to the East Section line 756.00 feet; thence S.89°-36'-30"E., 1151.00 feet to the East line of Section 29; thence Due South on said Section line 723.00 feet to the point of beginning. This plat includes 44 Lots numbered consecutively from 1 to 44.

SURVEYOR'S CERTIFICATE

I hereby certify that the plat hereon delineated is a correct one and that permanent metal monuments consisting of bars not less than one-half inch in diameter and 36 inches in length, or shorter bars of not less than one-half inch in diameter lapped over each other at least 6 inches with an over-all length of not less than 36 inches, encased in a concrete cylinder at least 4 inches in diameter and 36 inches in depth have been placed at points marked thus o as thereon shown at all angles in the boundaries of the land platted, at all intersections of streets, and at the intersections of streets with the boundaries of the plat as shown on said plat.
Clifford H. Spicer
Clifford H. Spicer-Registered Land Surveyor

CERTIFICATE OF APPROVAL BY CITY PLANNING COMMISSION

This plat was approved by the City Planning Commission of the City of Saginaw, Michigan, at a meeting held on the 22nd day of November 1955.
Russel O. Koenig
Director

CERTIFICATE OF APPROVAL BY THE COUNTY PLAT BOARD

This plat was approved by the County Plat Board of Saginaw County, Michigan, this 29th day of February 1956.

Clara F. Turek
Clara F. Turek, Register of Deeds-Chairman
Peter Girard
Peter Girard Auditor
George Cavanaugh
George Cavanaugh Auditor
William A. Case
William A. Case Auditor

CERTIFICATE OF APPROVAL BY BOARD OF COUNTY ROAD COMMISSIONERS

This plat has been examined and was approved on the 13th day of December 1955 by the Saginaw County Board of Road Commissioners.

The Board of County Road Commissioners of Saginaw County, Michigan, assume no responsibility for the improvement or maintenance of the Roads or Streets shown on this plat until such time as the following conditions have been met and approved by this Board.

All Roads and Streets are to be graded and drained with necessary drainage structures installed and a roadway surface, which shall consist of crushed stone or natural gravel conforming to Michigan State Highway Department Specifications 21A. The surface shall have a minimum width of 18 feet and a compacted thickness of 6 inches. When crushed stone is used the top 2 inches shall be 21A with screenings added to provide a dense wearing course.

Albert M. Wille
Albert M. Wille Chairman
William M. Trim
William M. Trim Member
Frank Dudewicz
Frank Dudewicz Member

COUNTY TREASURER'S CERTIFICATE RELATING TO TAXES
(Sec. 135, Act 206, 1893 as amended - Sec. 4134, C.L. 1915.)
Office of County Treasurer, Saginaw County

I hereby certify, that there are no tax liens or titles held by the State on the land described hereon, and that there are no tax liens or titles held by individuals on said lands, for the five years preceding the 29th day of February 1956, and that the taxes for said period of five years are not paid, as shown by the records of this office.

This certificate does not apply to taxes, if any, now in process of collection by township, city or village collecting officers.
Carl O. Little
Carl O. Little County Treasurer