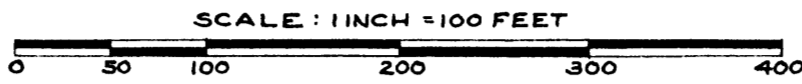


# SUNNYVIEW PARK

## SECTION 21 TOWNSHIP 12 NORTH, RANGE 4 EAST SAGINAW TOWNSHIP - SAGINAW COUNTY MICHIGAN

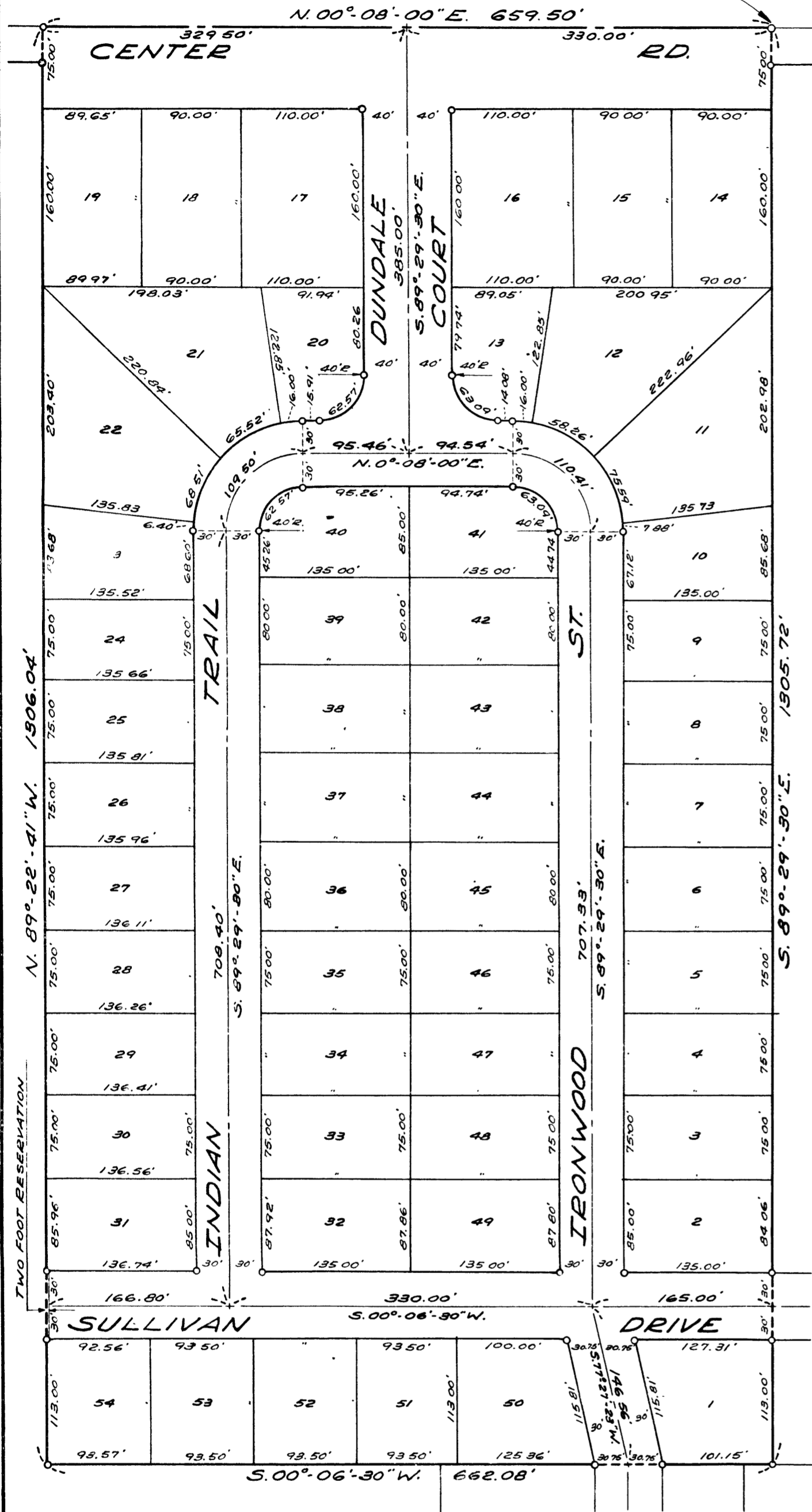


POINT OF BEGINNING  
N.W. Cor. of the S.W. 1/4 of  
the N.W. 1/4 of Section 21  
T.12N., R.4E.

ALL DIMENSIONS ARE GIVEN IN FEET AND DECIMALS THEREOF  
THE SPICER ENGINEERING COMPANY  
SAGINAW-MICHIGAN

HEREBY CERTIFY THAT THIS COPY IS  
A TRUE COPY OF THE ORIGINAL  
FILED IN THE OFFICE OF THE  
REGISTERED LAND SURVEYOR

*Clifford H. Spicer*  
Clifford H. Spicer - Registered Land Surveyor



### DEDICATION

KNOW ALL MEN BY THESE PRESENTS, That we, Selma E. Dunn, a single woman, as proprietor and as guardian of the Estate of James David Dunn, a minor, Joyce Dunn Kindt, a married woman, and Joanne Dunn, a single woman as proprietors, have caused the land embraced in the annexed plat to be surveyed, laid out and platted to be known as SUNNYVIEW PARK, Section 21, T.12 N., R.4 E., Saginaw Township, Saginaw County, Michigan, and that the streets, trails and drive as shown on said plat are hereby dedicated to the use of the public, Excepting however, from this dedication land designated "Two Foot Reservation," such land to be dedicated automatically at such time as street extensions adjacent thereto are dedicated in adjoining property.

Signed and Sealed in the Presence of )  
Robert F. Braun  
Martin Braun

Selma E. Dunn (L.S.)  
James David Dunn  
By Selma E. Dunn (L.S.)  
Joyce Dunn Kindt (L.S.)  
Joanne Dunn (L.S.)

### ACKNOWLEDGMENT

STATE OF MICHIGAN )  
County of Saginaw ) ss.

On this \_\_\_\_\_ day of \_\_\_\_\_ 1950, before me a Notary Public, in and for said County, personally came the above named Selma E. Dunn, a single woman, Joyce Dunn Kindt, a married woman, and Joanne Dunn, a single woman, known to me to be the persons who executed the above dedication and acknowledged the same to be their free act and deed.

*Martin Braun*  
Notary Public, Saginaw County, Michigan

My Commission Expires \_\_\_\_\_

### DESCRIPTION

The land embraced in the annexed plat of SUNNYVIEW PARK, Section 21, Township 12 North, Range 4 East, Saginaw Township, Saginaw County, Michigan, is the North 1/2 of the Southwest 1/4 of the Northwest 1/4 of said Section 21 and is described as follows: Beginning at the Northwest corner of the Southwest 1/4 of the Northwest 1/4 of said Section 21; thence S. 89°-29'-30"E., on the North 1/3 line of said Section, 1306.72 feet to the West 1/8 line of said Section; thence S. 00°-06'-50"W., on said West 1/8 line 662.08 feet; thence N. 89°-22'-41"W., 1306.04 feet to the West line of said Section 21; thence N. 00°-08'-00"E., on said Section line 659.50 feet to the point of beginning.

### SURVEYOR'S CERTIFICATE

I hereby certify that the plat hereon delineated is a correct one and that permanent metal monuments consisting of bars not less than one-half inch in diameter and 48 inches in length, or shorter bars of not less than one-half inch in diameter lapped over each other at least 6 inches with an over-all length of not less than 48 inches, encased in a concrete cylinder at least 4 inches in diameter and 48 inches in depth have been placed at points marked thus o as thereon shown at all angles in the boundaries of the land platted, at all the intersections of streets, at points of curvature and points of tangency of streets, and at the intersections of streets with the boundaries of the plat as shown on said plat.

*Clifford H. Spicer*  
Clifford H. Spicer - Registered Land Surveyor

### COUNTY TREASURER'S CERTIFICATE RELATING TO TAXES (Sec. 135, Act 208, 1893, as amended - Sec. 4134, C. L. 1915.) Office of County Treasurer, Saginaw County

I hereby certify, that there are no tax liens or titles held by the State on the lands described hereon, and that there are no tax liens or titles held by individuals on said lands, for the five years preceding the 30th day of January 1950, and that the taxes for said period of five years are paid, as shown by the records of this office.

This certificate does not apply to taxes, if any, now in process of collection by township, city or village collecting officers.

*Carl O. Little*  
Carl O. Little - County Treasurer

### CERTIFICATE OF APPROVAL BY BOARD OF COUNTY ROAD COMMISSIONERS

This plat has been examined and was approved on the 2nd day of January 1951, by the Saginaw County Board of Road Commissioners.

The Board of Road Commissioners of Saginaw, Michigan, assumes no responsibility for the improvement or maintenance of the streets and roads shown on this plat until such time as they have been graded and drained with the necessary drainage structures installed and a gravel, slag, or cinder surface having a compacted thickness of at least 6 inches and a width of at least 18 feet has been applied and approved by this board.

*William M. Trim*  
William M. Trim - Chairman  
*Walter F. Graebner*  
Walter F. Graebner - Member  
*Frank Dudewicz*  
Frank Dudewicz - Member

### CERTIFICATE OF MUNICIPAL APPROVAL

This plat was approved by the Township Board of the Township of Saginaw at a meeting held Jan 8th 1951 (Date)

*Meldron W. McLean*  
Meldron W. McLean - Clerk

### CERTIFICATE OF APPROVAL BY THE BOARD OF COUNTY AUDITORS

This plat was approved by The Board of County Auditors of Saginaw County, Michigan this Fourth day of Jan 1951.

*Peter Girard*  
Peter Girard  
*George E. Tafafoya, Jr.*  
George E. Tafafoya, Jr.  
*Charles E. Tafafoya, Jr.*  
Charles E. Tafafoya, Jr.

### CERTIFICATE OF APPROVAL BY CITY PLAN COMMISSION

This plat was approved by the City Plan Commission of the City of Saginaw, Michigan, at a meeting held July 25 1950

*Russel O. Koenig*  
Russel O. Koenig - Planning Director