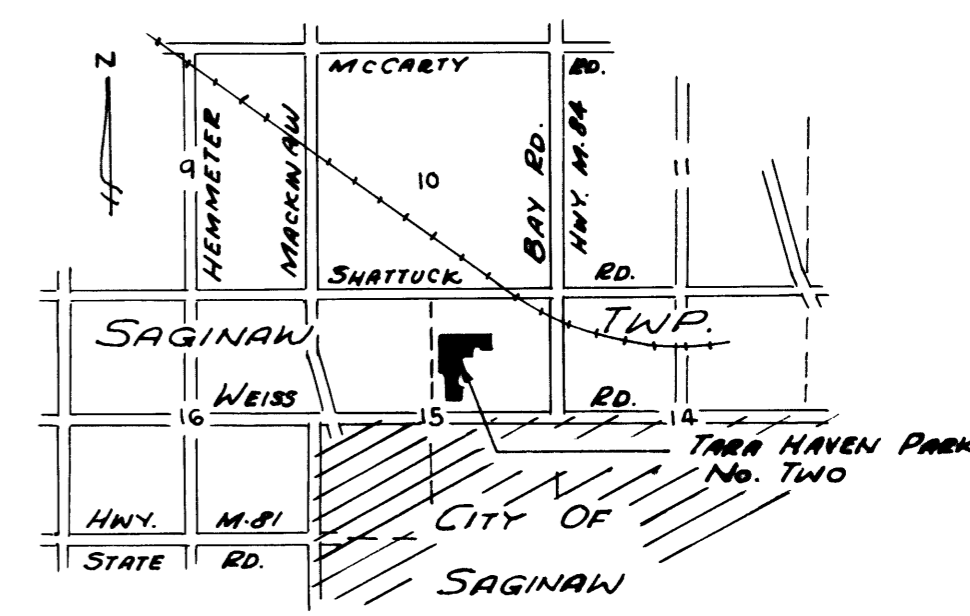
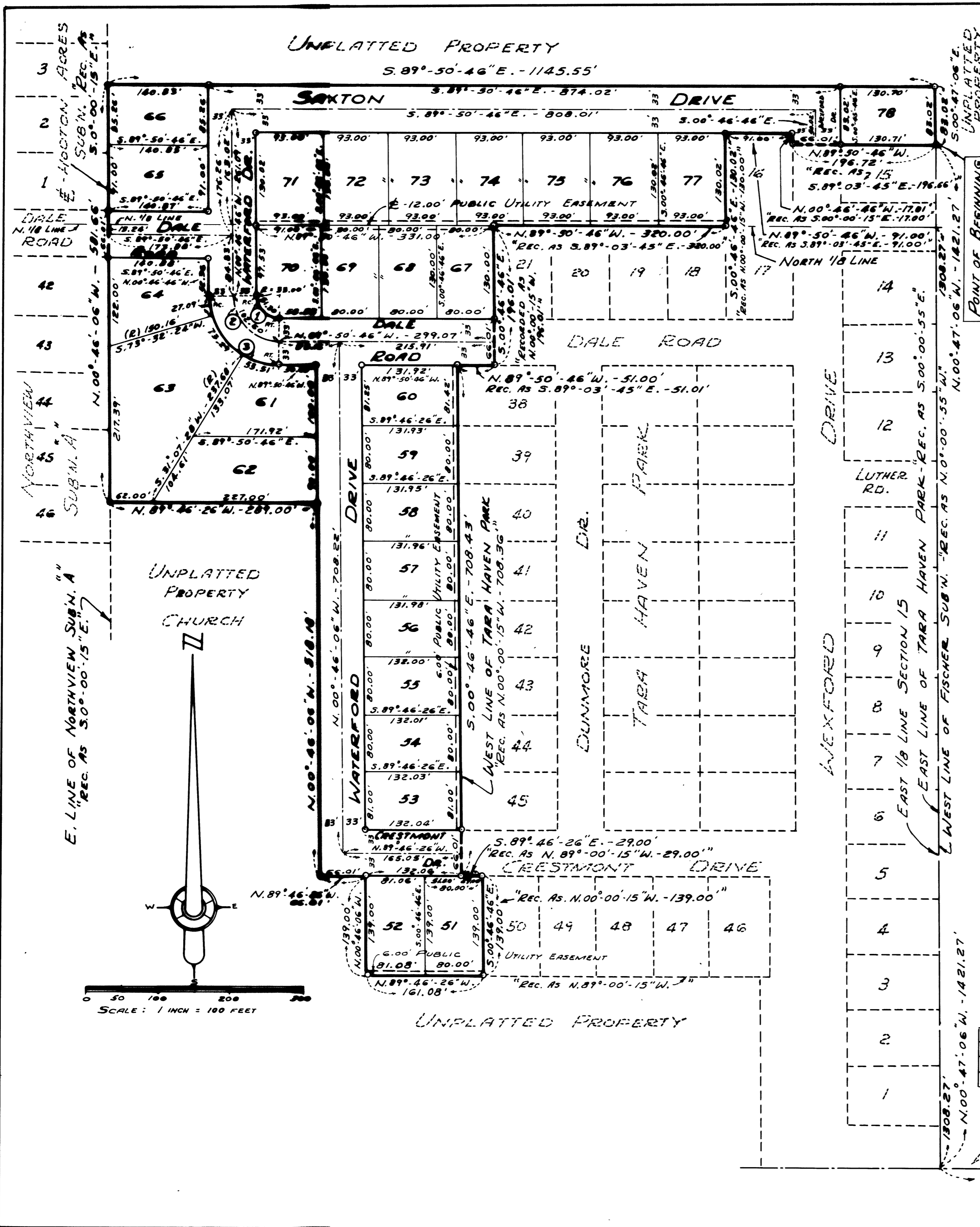


# TARA HAVEN PARK No. TWO

PART OF THE NE 1/4 SEC. 15, T. 12 N. - R. 4 E.  
SAGINAW TOWNSHIP, SAGINAW COUNTY, MICHIGAN

SPICER ENGINEERING COMPANY  
SAGINAW, MICHIGAN  
1969



LOCATION SKETCH  
No SCALE

### LEGEND

- 1- ALL DIMENSIONS ARE GIVEN IN FEET.
- 2- ALL CURVILINEAR MEASUREMENTS ARE ARC DISTANCES.
- 3- CONCRETE MONUMENTS HAVE BEEN PLACED AT ALL POINTS MARKED "O"
- 4- SET SOLID IRON BARS 1/2" IN DIA. BY 18" IN LENGTH AT ALL LOT CORNERS.
- 5- BEARINGS ARE EXPRESSED IN RELATION TO THE TRUE MERIDIAN AS DETERMINED FROM A SOLAR OBSERVATION OF 1-12-68
- 6- (R) INDICATES CURVE IS RADIAL
- 7- (C) INDICATES CURVE NUMBER (SEE CURVE DATA TABLE HEREON)
- 8- RECORDED BEARINGS OF ADJOINING PLATS ARE SHOWN ON PLAN.

CURVE DATA						
No.	DELTA ANGLE	RADIUS	ARC	CHORD	CHORD BEARING	TANGENT
1	89°-04'-00"	33.00'	51.30'	46.29'	N. 45°-18'-46"W.	32.47'
2	89°-04'-00"	66.00'	102.60'	92.58'	N. 45°-18'-46"W.	64.93'
3	89°-04'-00"	99.00'	153.89'	138.86'	N. 45°-18'-46"W.	97.40'

E. 1/4 COR. SEC. 15  
T. 12 N. - R. 4 E.  
SAGINAW TWP.

N. 89°-46'-26"W. - 1310.98'  
"REC. AS N. 89°-00'-15"W. - 1310.98"  
TARA HAVEN PARK

E. LINE SEC. 15  
BAY ROAD

Sheet 18 - Page 10