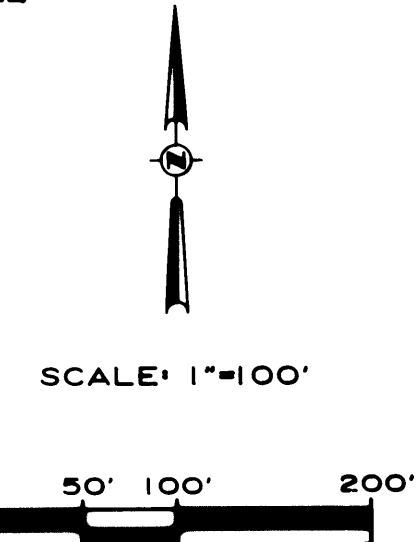
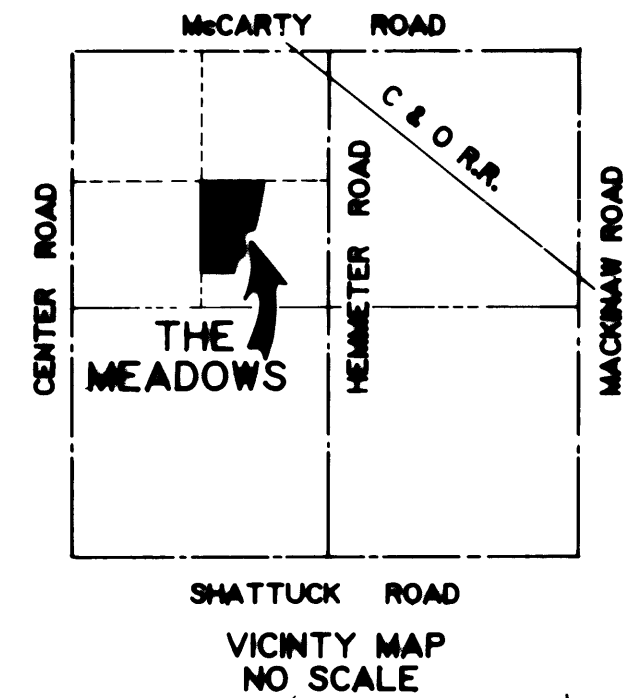
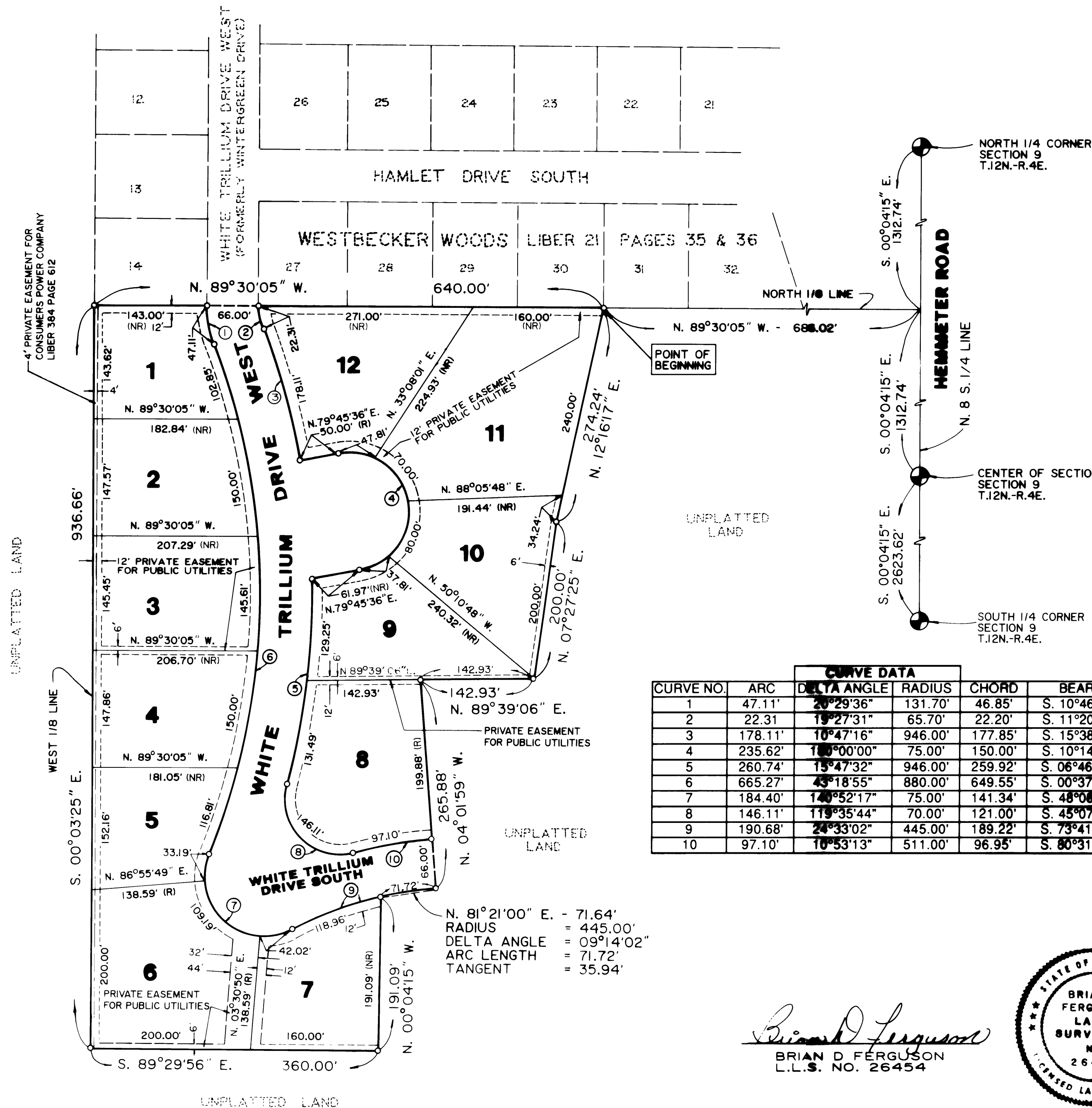


# THE MEADOWS

PART OF THE NORTHWEST 1/4 OF SECTION 9, T.12N.-R.4E., SAGINAW TOWNSHIP, SAGINAW COUNTY, MICHIGAN



**LEGEND**

1. ALL DIMENSIONS ARE GIVEN IN FEET.
2. MONUMENTS, CONSISTING OF IRON RODS ONE HALF INCH IN DIAMETER AND 36 INCHES IN LENGTH WITH CAP NO. 20454, ENCASED IN CONCRETE CYLINDERS 4 INCHES IN DIAMETER AND 36 INCHES IN LENGTH, HAVE BEEN PLACED AT ALL POINTS SHOWN BY SYMBOL "O".
3. SET 1/2 INCH IRON ROD, 18 INCHES IN LENGTH, WITH CAP NO. 20454, AT ALL PROPERTY CORNERS.
4. ALL CURVILINEAR MEASUREMENTS ARE ARC DISTANCES.
5. (R) INDICATES RADIAL LINE.
6. (NR) INDICATES NON-RADIAL LINE.
7. BEARINGS WERE DERIVED FROM WESTBECKER WOODS, RECORDED IN LIBER 21, PAGES 35 AND 36.
8. ② INDICATES CURVE NUMBER.

CURVE DATA					
CURVE NO.	ARC	DELTA ANGLE	RADIUS	CHORD	BEARING
1	47.11'	20°29'36"	131.70'	46.85'	S. 10°46'52" E.
2	22.31	19°27'31"	65.70'	22.20'	S. 11°20'46" E.
3	178.11'	10°47'16"	946.00'	177.85'	S. 15°38'02" E.
4	235.62'	10°00'00"	75.00'	150.00'	S. 10°14'24" E.
5	260.74'	15°47'32"	946.00'	259.92'	S. 06°46'46" W.
6	665.27'	43°18'55"	880.00'	649.55'	S. 00°37'48" W.
7	184.40'	14°52'17"	75.00'	141.34'	S. 48°08'53" E.
8	146.11'	119°35'44"	70.00'	121.00'	S. 45°07'20" E.
9	190.68'	24°33'02"	445.00'	189.22'	S. 73°41'30" W.
10	97.10'	10°53'13"	511.00'	96.95'	S. 80°31'24" W.

*Brian D. Ferguson*  
 BRIAN D. FERGUSON  
 L.L.S. NO. 26454

