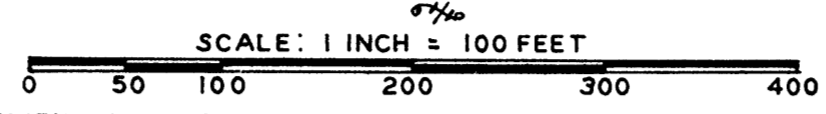


# TWIN OAKS PLAT

## DIVISION TWO

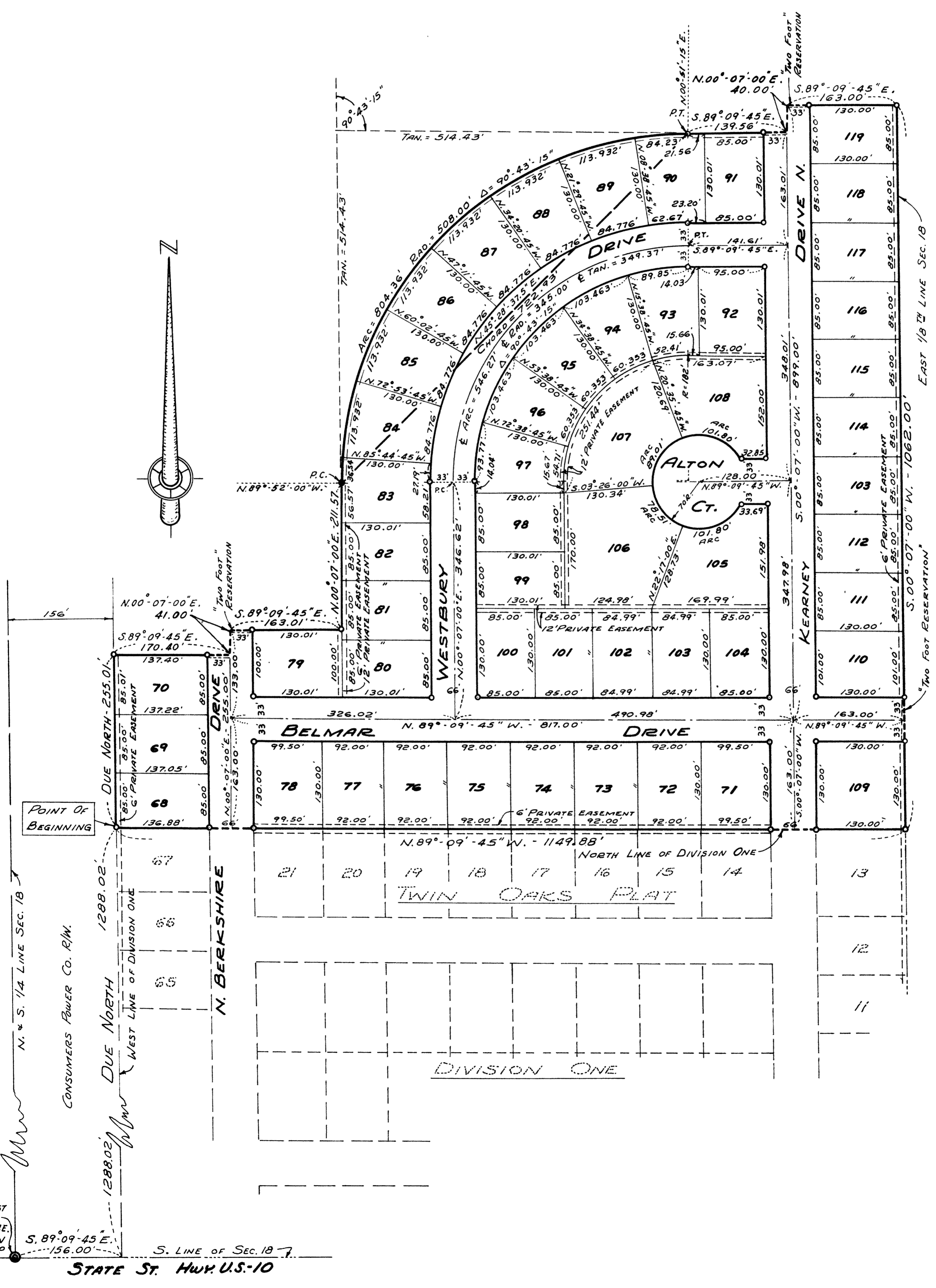
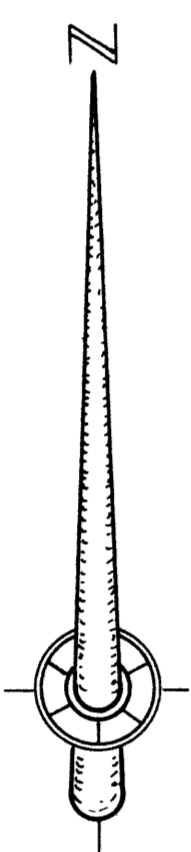
SECTION 18 - TOWNSHIP 12 NORTH - RANGE 4 EAST

SAGINAW TOWNSHIP - SAGINAW COUNTY - MICHIGAN



ALL DIMENSIONS ARE GIVEN IN FEET AND DECIMALS THEREOF

SPICER ENGINEERING COMPANY  
SAGINAW, MICHIGAN  
1962



S. 1/4 Post  
SEC. 18  
T. 12N. - R. 4E.  
SAGINAW  
TOWNSHIP

S. 89°-09'-45" E.  
156.00'

S. LINE OF SEC. 18

STATE ST. HWY. U.S.-10