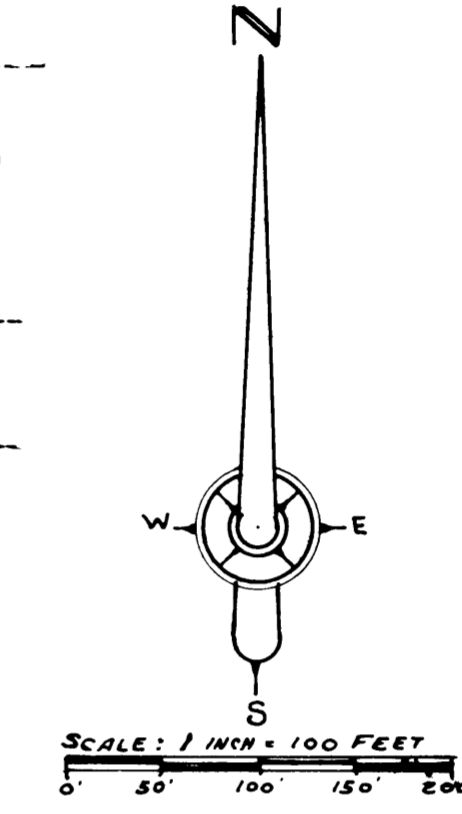
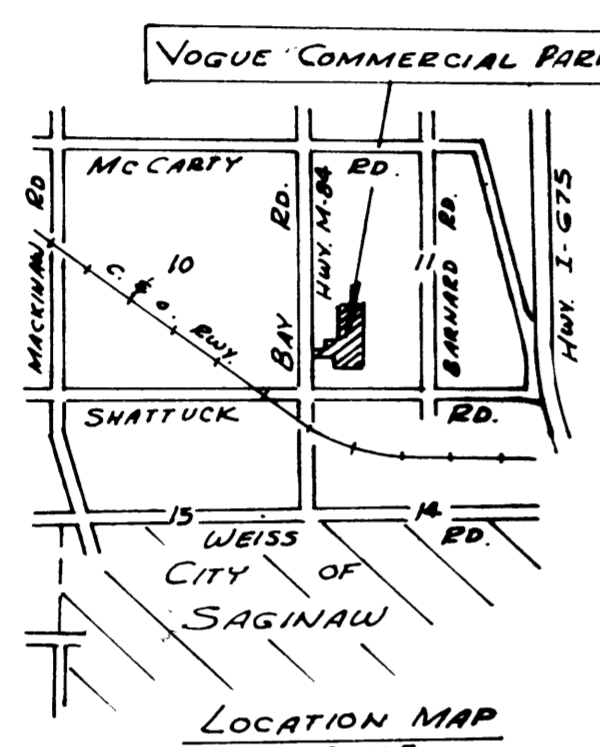
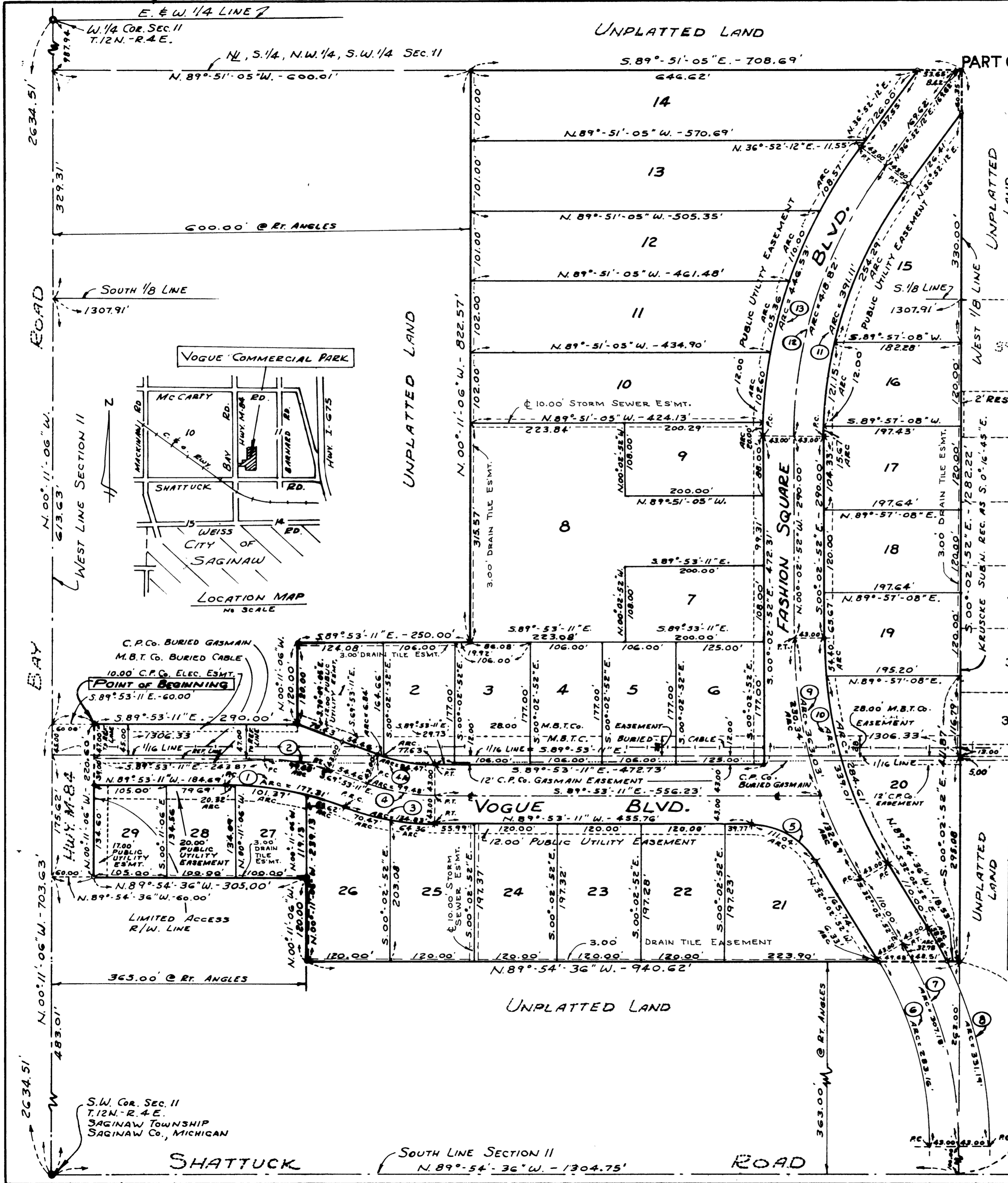


Lib 20 - Page 25

VOGUE COMMERCIAL PARK

PART OF THE SW 1/4 SECTION 11, T.12 N.-R.4 E., SAGINAW TOWNSHIP, SAGINAW COUNTY, MICHIGAN.



- 1- ALL DIMENSIONS ARE GIVEN IN FEET
- 2- ALL CURVILINEAR MEASUREMENTS ARE ARC DISTANCES
- 3- CONCRETE MONUMENTS HAVE BEEN PLACED AT ALL POINTS MARKED "B"
- 4- SET SOLID IRON BARS 1/2" IN DIA. BY 18" IN LENGTH AT ALL LOT CORNERS
- 5- BEARINGS WERE ESTABLISHED FROM THE RECORDED PLAT OF BAY ROAD COMMERCIAL PARK, LIBER 18, PG. 11- WITH TRUE BEARINGS FROM SOLAR OBSERVATION ON 2-5-1968

No.	DELTA ANGLE	RADIUS	ARC	CHORD	CHORD BEARING	TANGENT
1	21°-09'-54"	480.00'	177.31'	176.31'	S. 79°-18'-14" E.	89.68'
2	20°-00'-00"	285.00'	99.48'	98.98'	S. 79°-53'-11" E.	50.25'
3	21°-09'-54"	365.00'	134.83'	134.07'	N. 79°-18'-14" W.	68.19'
4	20°-00'-00"	285.00'	99.48'	98.98'	N. 79°-53'-11" W.	50.25'
4A	20°-00'-00"	242.00'	84.47'	84.05'	N. 79°-53'-11" W.	42.67'
5	57°-50'-19"	110.00'	111.04'	106.39'	S. 60°-58'-01" E.	60.77'
6	32°-00'-00"	507.00'	283.16'	279.50'	S. 16°-02'-52" E.	145.38'
7	32°-00'-00"	550.00'	307.18'	303.20'	S. 16°-02'-52" E.	157.71'
8	32°-00'-00"	593.00'	331.19'	326.91'	S. 16°-02'-52" E.	170.04'
9	32°-00'-00"	650.00'	363.03'	358.33'	N. 16°-02'-52" W.	186.38'
10	32°-00'-00"	607.00'	339.01'	334.62'	N. 16°-02'-52" W.	174.05'
11	36°-55'-04"	607.00'	391.11'	384.38'	N. 18°-24'-40" E.	202.62'
12	36°-55'-04"	650.00'	418.82'	411.61'	N. 18°-24'-40" E.	216.97'
13	36°-55'-04"	693.00'	446.53'	438.84'	N. 18°-24'-40" E.	231.32'

EXAMINED AND APPROVED
 Date JUNE 9, 1976

 ALLISON GREEN
 STATE TREASURER
 By
 Richard E. Lomax, Plat Examiner

S.W. Cor. Sec. 11
 T.12 N.-R.4 E.
 SAGINAW TOWNSHIP
 SAGINAW Co., MICHIGAN

SOUTH LINE SECTION 11
 N. 89°-54'-36" W. - 1304.75'

ROAD