

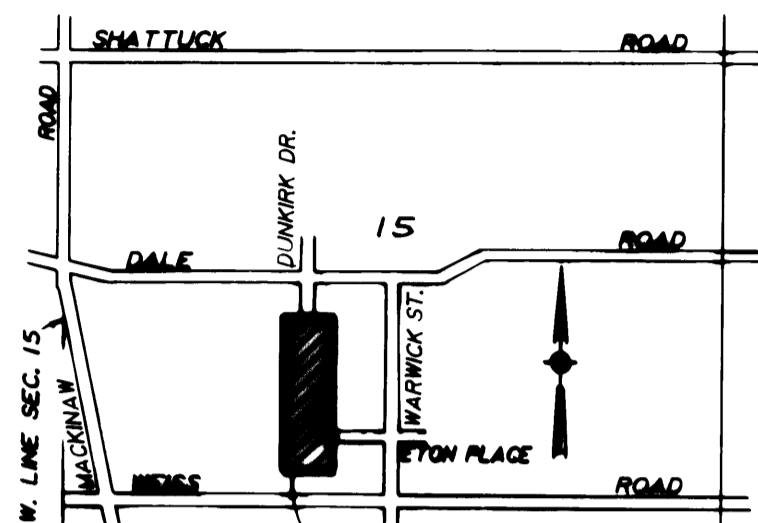
REC. LIBER 21, PAGES 20 & 21

REC. LIBER 16, PAGE 3

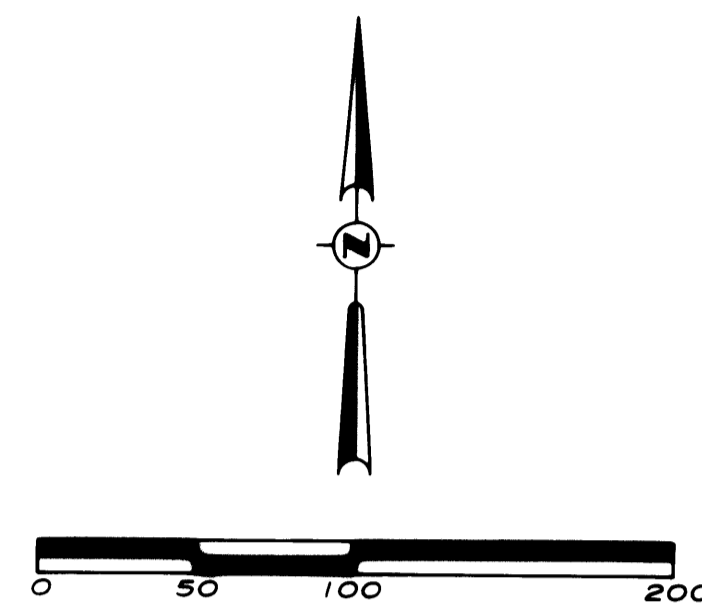
REC. AS (N.88°-45'-30"W)

WARWICK PINES

PART OF THE NORTHWEST 1/4 OF SECTION 15, T.12N.-R.4E., SAGINAW TOWNSHIP, SAGINAW COUNTY, MICHIGAN



WARWICK PINES VICINITY MAP NO SCALE

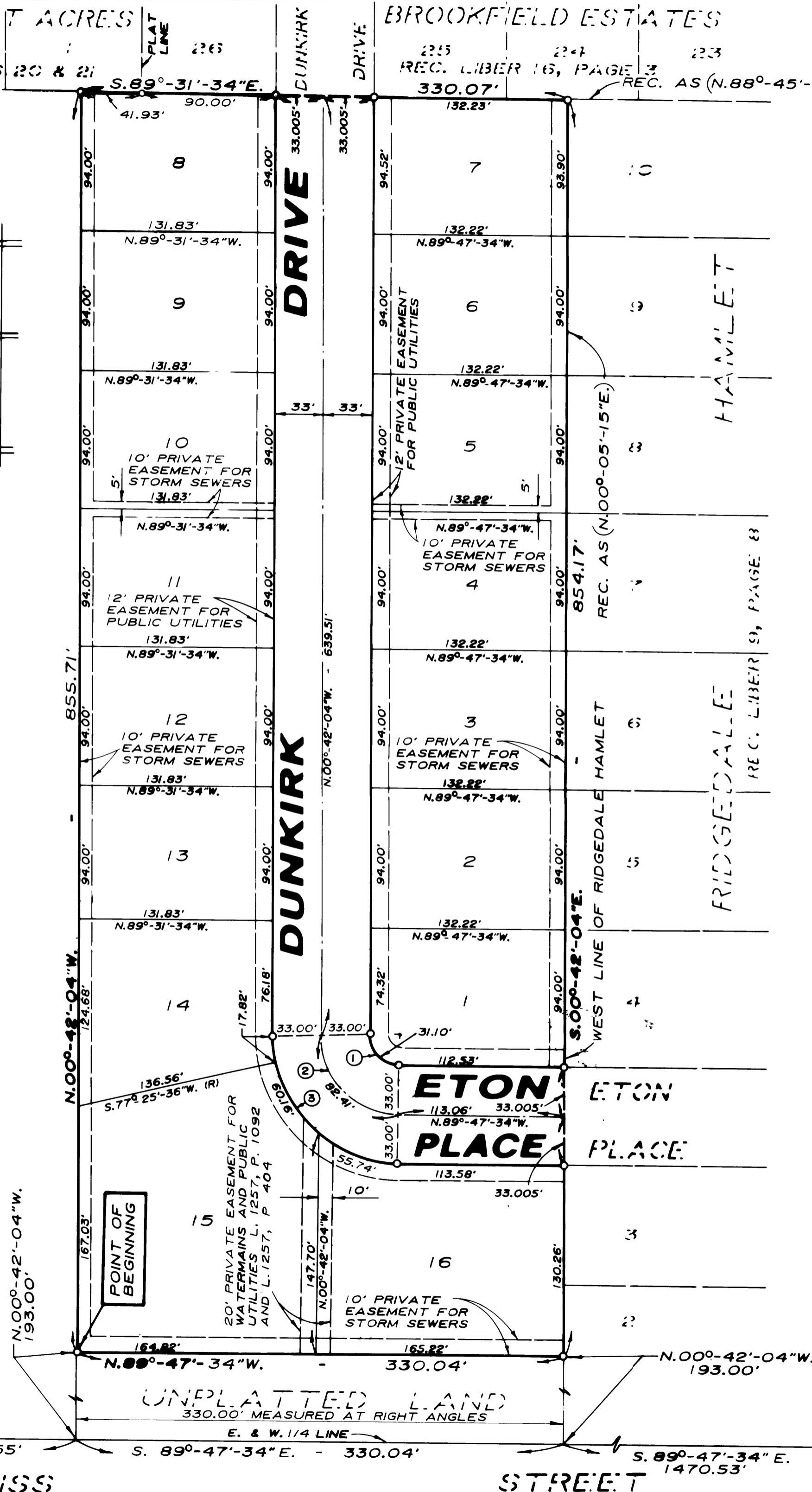


LEGEND

- 1) ALL DIMENSIONS ARE GIVEN IN FEET.
- 2) MONUMENTS CONSISTING OF IRON RODS ONE HALF INCH IN DIAMETER AND 36 INCHES IN LENGTH WITH CAP NO. 26454, ENCASED IN CONCRETE CYLINDERS FOUR INCHES IN DIAMETER AND 36 INCHES IN LENGTH, HAVE BEEN PLACED AT ALL POINTS MARKED "O".
- 3) SET 1/2 INCH IRON ROD, 18 INCHES IN LENGTH, WITH CAP NO. 26454 AT ALL LOT CORNERS.
- 4) ALL CURVILINEAR MEASUREMENTS ARE ARC DISTANCES.
- 5) BEARINGS WERE DERIVED FROM HARVEST ACRES RECORDED IN LIBER 21, PAGES 20 AND 21 OF PLATS
- 6) (C) INDICATES CURVE NUMBER.
- 7) (R) INDICATES A RADIAL LINE

CURVE DATA						
NO.	RADIUS	DELTA ANGLE	ARC LENGTH	TANGENT LENGTH	CHORD LENGTH	CHORD BEARING
1	20.00'	89°-05'-30"	31.10'	19.68'	28.06'	N.45°14'-49"W.
2	53.00'	89°-05'-30"	82.41'	52.17'	74.36'	N.45°14'-49"W.
3	86.00'	89°-05'-30"	133.72'	84.65'	120.65'	N.45°14'-49"W.

UNPLATTED LAND



Brian D. Ferguson
 BRIAN D. FERGUSON
 L.L.S. No. 26454

EAST LINE OF SECTION 15
 EBY (M-1-334) ROAD

WEISS

STREET

S. 89°-08'-23"E. 2622.48'