

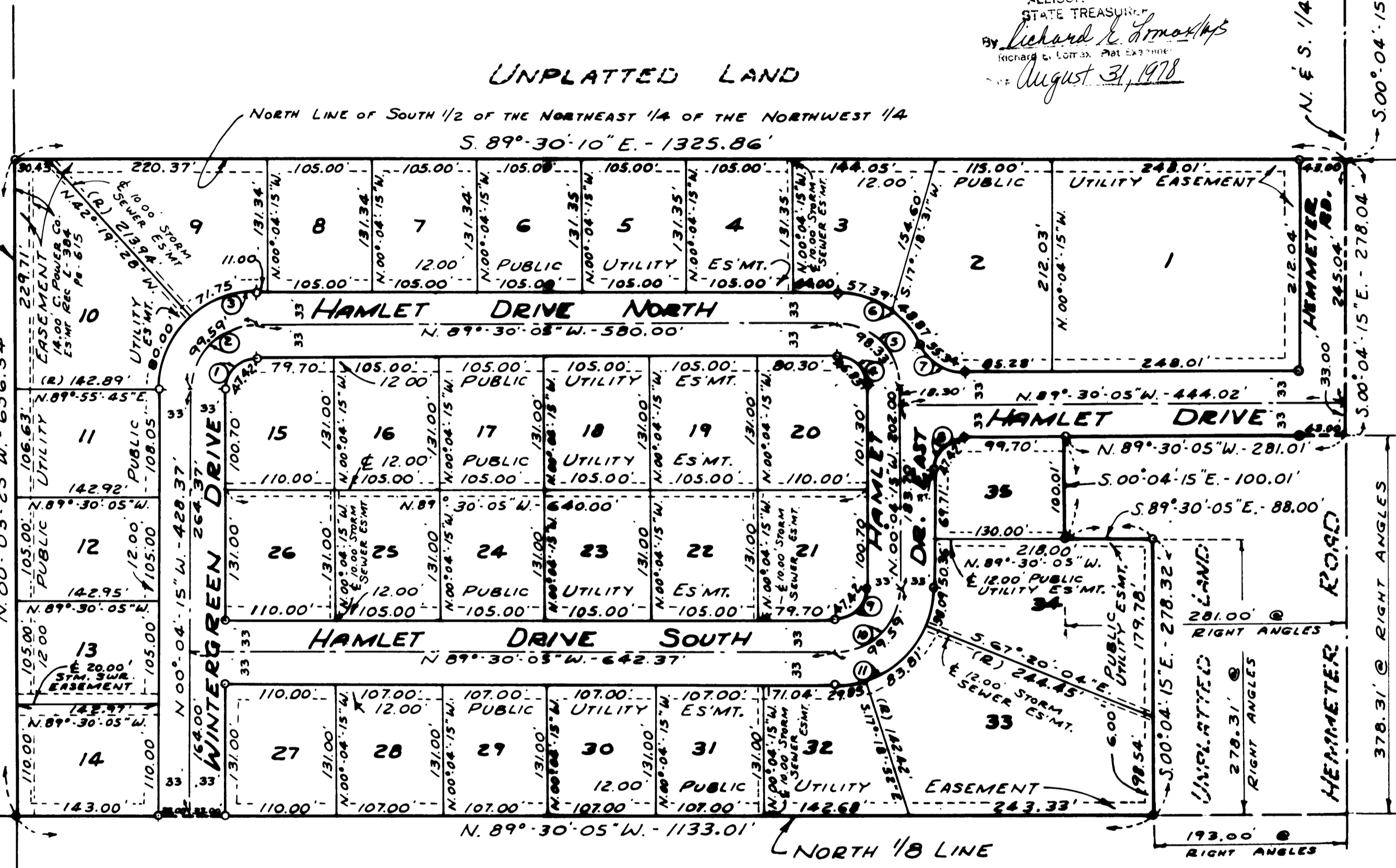
WESTBECKER WOODS

PART OF THE NORTHWEST 1/4 OF SECTION 9, T.12N.-R.4E.
SAGINAW TOWNSHIP, SAGINAW COUNTY, MICHIGAN

MCCARTY ROAD
N. LINE SEC. 9
NORTH 1/4 COR. SEC. 9
T.12N.-R.4E.
SAGINAW TOWNSHIP
SAGINAW Co., MICHIGAN

ALLISON
STATE TREASURER
By Richard E. Smith
August 31, 1978

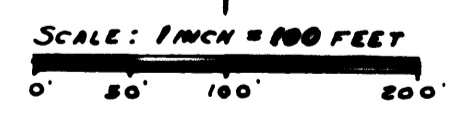
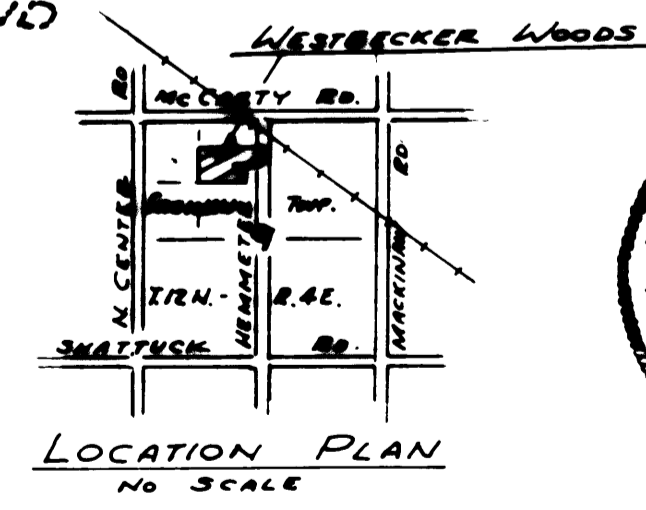
CONSUMERS POWER COMPANY R/W.
LIBER 384, PG. 615
WEST 1/8 LINE
N. 00° 03' 25" W. - 656.34'



POINT OF BEGINNING

UNPLATTED LAND

| CURVE DATA | | | | | | |
|------------|-------------|--------|---------|---------|-------------------|---------|
| No. | DELTA ANGLE | RADIUS | ARC | CHORD | CHD. BEARING | TANGENT |
| 1 | 90° 34' 10" | 30.00' | 47.42' | 42.64' | S. 45° 12' 50" W. | 30.30' |
| 2 | 90° 34' 10" | 63.00' | 99.59' | 89.54' | S. 45° 12' 50" W. | 63.63' |
| 3 | 90° 34' 10" | 96.00' | 151.75' | 136.44' | S. 45° 12' 50" W. | 96.96' |
| 4 | 89° 25' 50" | 30.00' | 46.83' | 42.22' | N. 44° 47' 10" W. | 29.70' |
| 5 | 89° 25' 50" | 63.00' | 98.33' | 88.65' | N. 44° 47' 10" W. | 62.38' |
| 6 | 63° 25' 12" | 96.00' | 106.26' | 100.92' | N. 57° 47' 30" W. | 59.31' |
| 7 | 63° 25' 12" | 50.00' | 55.34' | 52.56' | N. 57° 47' 30" W. | 30.89' |
| 8 | 90° 34' 10" | 30.00' | 47.42' | 42.64' | S. 45° 12' 50" W. | 30.30' |
| 9 | 90° 34' 10" | 30.00' | 47.42' | 42.64' | S. 45° 12' 50" W. | 30.30' |
| 10 | 90° 34' 10" | 63.00' | 99.59' | 89.54' | S. 45° 12' 50" W. | 63.63' |
| 11 | 90° 34' 10" | 96.00' | 151.75' | 136.44' | S. 45° 12' 50" W. | 96.96' |



NOTE:
1 - ALL DIMENSIONS ARE GIVEN IN FEET
2 - CONCRETE MONUMENTS HAVE BEEN PLACED AT ALL POINTS MARKED "O"
3 - SET SOLID IRON BARS 1/2" IN DIA. BY 18" IN LENGTH AT ALL LOT CORNERS
4 - BEARINGS WERE ESTABLISHED FROM THE RECORDED PLAT OF SILVERWOOD SUBDIVISION (REC. LIBER 19, PAGES 26 & 27)
5 - ALL CURVILINEAR MEASUREMENTS ARE ARC DISTANCES
6 - (R) INDICATES A RADIAL LINE