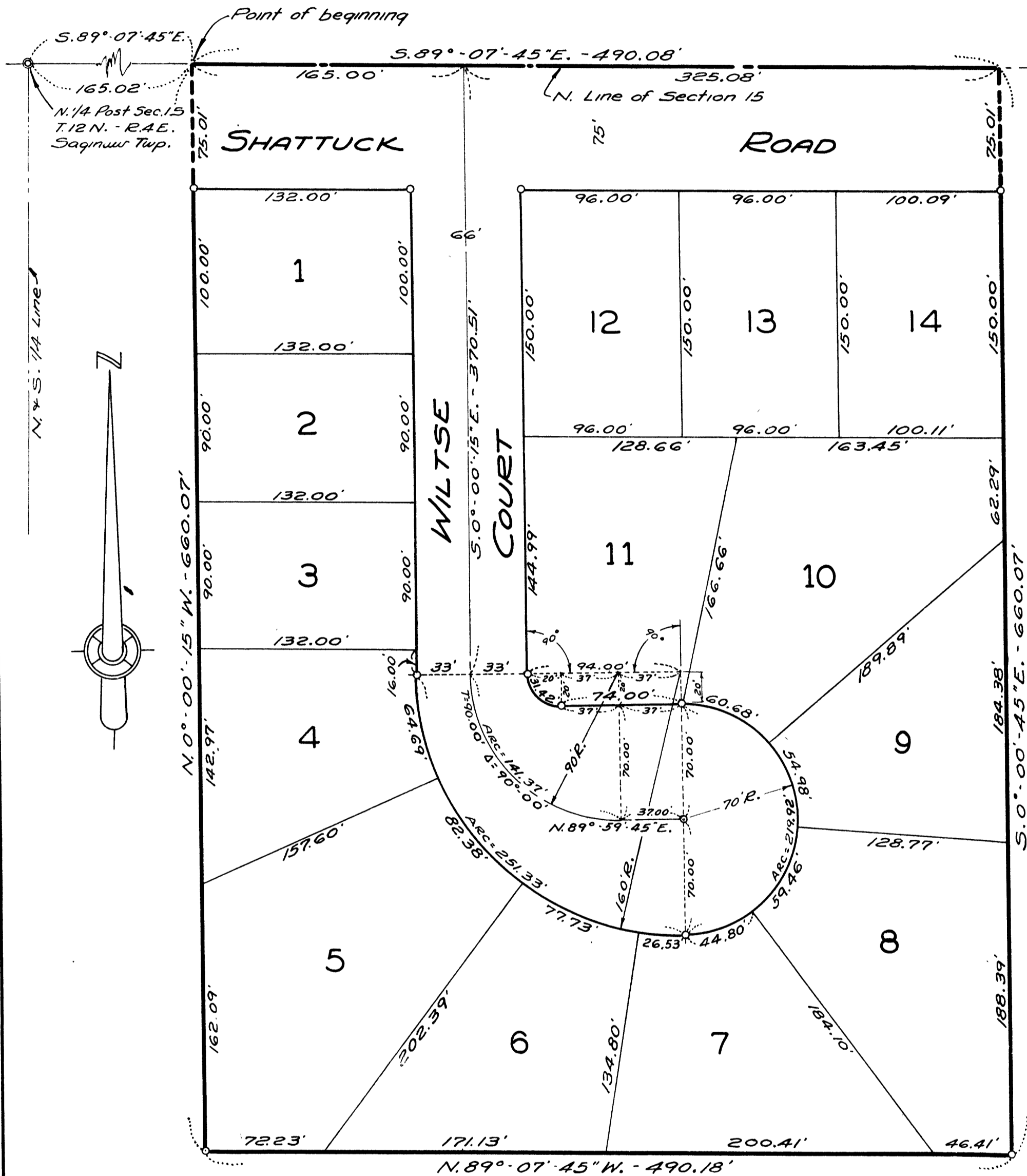


# WILTSE PLAT

A PART OF N.E. 1/4 SECTION 15, T.12N. - R.4E.  
SAGINAW TOWNSHIP, SAGINAW COUNTY, MICHIGAN

SCALE: 1 INCH = 60 FEET  
0 30 60 120 180 240  
ALL DIMENSIONS ARE GIVEN IN FEET AND DECIMALS THEREOF  
SPICER ENGINEERING AND ASSOCIATES  
SAGINAW, MICHIGAN  
1958



DESCRIPTION  
N.89°-07'-45" W. - 490.18'

The land embraced in the annexed plat of WILTSE PLAT, A Part Of N.E. 1/4, Section 15, T.12 N.-R.4 E., Saginaw Township, Saginaw County, Michigan, is described as follows: Commencing at a point on the North line of said Section, 165.02 feet S.89°-07'-45"E., along said line from the North 1/4 post of said Section 15; thence S.89°-07'-45"E., along said North Section line 490.08 feet; thence S.00°-00'-45"E., 660.07 feet; thence N.89°-07'-45"W., 490.18 feet; thence N.00°-00'-15"W., 660.07 feet to the point of beginning. This plat contains 14 Lots numbered consecutively from 1 to 14 inclusive.

**SURVEYOR'S CERTIFICATE**

I hereby certify that the plat herein delineated is a correct one and that permanent metal monuments consisting of bars not less than one-half inch in diameter and 36 inches in length, or shorter bars of not less than one-half inch in diameter lapped over each other at least 6 inches with an over-all length of not less than 36 inches, enclosed in a concrete cylinder at least 4 inches in diameter and 36 inches in depth have been placed at points marked thus  $\circ$  as thereon shown at all angles in the boundaries of the land platted, at all intersections of streets, at points of curvature and points of tangency in street lines, and at the intersections of streets with the boundaries of the plat as shown on said plat.

*Clifford H. Spicer*  
Clifford H. Spicer - Registered Land Surveyor

**CERTIFICATE OF APPROVAL BY THE COUNTY PLAT BOARD**

This plat was approved by the County Plat Board of Saginaw County, Michigan, this 31st day of October 1958.

*Clara P. Turek*  
Clara P. Turek, Register of Deeds - Chairman  
*Ben J. Macker*  
Ben J. Macker Auditor  
*William A. Case*  
William A. Case Auditor  
*John H. Deibel*  
John H. Deibel Auditor

Register's Office  
Saginaw County  
Plat of *Wiltse Plat*  
was Recorded this 5th day of November A.D. 1958 at 7:00 o'clock P.M. in Liber 11 of plate 1 on Page 4  
*Clara P. Turek*  
Clara P. Turek, Register of Deeds

**DEDICATION**

KNOW ALL MEN BY THESE PRESENTS, That I, Isabel B. Wiltse, a single woman, as proprietor, and Michigan National Bank, a National Banking Association, by Oswald M. List, Vice-President, and Fred C. Wiese, Assistant Vice-President, as mortgagee, have caused the land embraced in the annexed plat to be surveyed, laid out and platted to be known as WILTSE PLAT, A Part Of N.E. 1/4 Of Section 15, T.12 N.-R.4 E., Saginaw Township, Saginaw County, Michigan, and that the Court and Road as shown on said plat are hereby dedicated to the use of the public.

Signed & Sealed in the Presence of  
Isabel B. Wiltse (L.S.)  
MICHIGAN NATIONAL BANK  
By *Oswald M. List* (L.S.)  
By *Fred C. Wiese* (L.S.)  
Fred C. Wiese, Assistant Vice-President

**ACKNOWLEDGMENT**

STATE OF MICHIGAN) ss.  
County of Saginaw) ss.  
On this 5th day of August 1958, before me, a Notary Public in and for said county, personally came the above named Isabel B. Wiltse, a single woman, known to me to be the person who executed the above dedication and acknowledged same to be her free act and deed. Also appeared Oswald M. List and Fred C. Wiese, to me personally known, who being each by me duly sworn did say that they are the Vice-President and Assistant Vice-President, respectively, of the Michigan National Bank, a National Banking Association, and that the seal affixed to said instrument was signed and sealed in behalf of said corporation by authority of its Board of Directors and the said Oswald M. List and Fred C. Wiese acknowledged said instrument to be the free act and deed of said corporation.

My Commission Expires: 4-1-61  
April 1, 1961  
*Gladys Nuschterlein*  
Gladys Nuschterlein  
Notary Public, Saginaw County, Michigan

**COUNTY TREASURER'S CERTIFICATE RELATING TO TAXES**  
(Sec. 135, Act 206, 1893 as amended - Sec. 4134, C.L. 1915.)  
Office of County Treasurer, Saginaw County

I hereby certify, that there are no tax liens or titles held by the State on the land described hereon, and that there are no tax liens or titles held by individuals on said lands, for the five years preceding the 4th day of September 1958, and that the taxes for said period of five years are all paid, as shown by the records of this office.

This certificate does not apply to taxes, if any, now in process of collection by township, city or village collecting officers  
*Carl O. Little*  
Carl O. Little County Treasurer

**CERTIFICATE OF MUNICIPAL APPROVAL**  
This plat was approved by the Township Board of the Township of Saginaw at a meeting held on the 8th day of Sept 1958.  
*H. W. Hochthanner*  
H. W. Hochthanner Township Clerk

**CERTIFICATE OF APPROVAL BY CITY PLANNING COMMISSION**  
This plat was approved by the City Planning Commission of the City of Saginaw, Michigan, at a meeting held on the 22nd day of July 1958.  
*John B. Dempsey*  
John B. Dempsey Director

**CERTIFICATE OF APPROVAL BY BOARD OF COUNTY ROAD COMMISSIONERS**  
This plat has been examined and was approved on the 27th day of August 1958 by the Saginaw County Board of Road Commissioners.  
The Board of County Road Commissioners of Saginaw County, Michigan, assume no responsibility for the improvement or maintenance of the Roads or Streets shown on this plat until such time as the following conditions have been met and approved by this Board.

All Roads and Streets are to be graded and drained with necessary drainage structures installed and a roadway surface, which shall consist of crushed stone or natural gravel conforming to Michigan State Highway Department Specifications 21A. The surface shall have a minimum width of 18 feet and a compacted thickness of 6 inches. When crushed stone is used the top 2 inches shall be 21A with screenings added to provide a dense wearing course.

I hereby certify this copy is a true copy of the plat forwarded the Register of Deeds for recording.  
*Harold H. Bauer*  
Harold H. Bauer Chairman  
*William H. Trim*  
William H. Trim Member  
*Frank Dudewicz*  
Frank Dudewicz Member

EXAMINED AND APPROVED  
Date: *November 3, 1958*