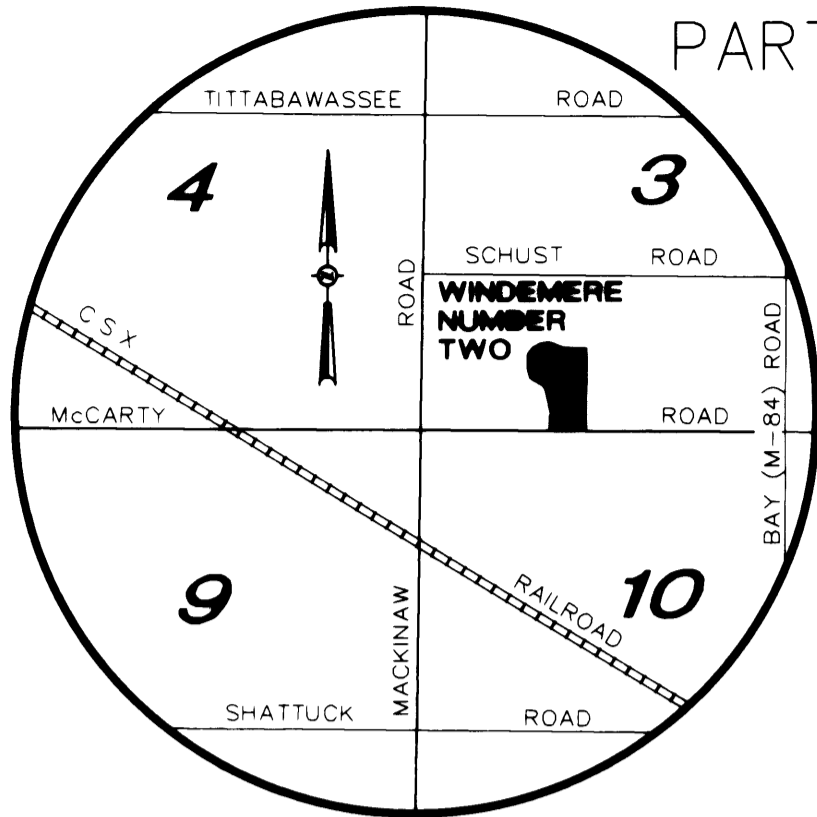


# WINDEMERE NUMBER TWO

PART OF THE W. 1/2 OF THE S. 1/2 OF THE SW 1/4 OF FRACTIONAL SECTION 3  
T.12N.-R.4E., SAGINAW TOWNSHIP, SAGINAW COUNTY, MICHIGAN

**CURVE TABLE**

CURVE	RADIUS	LENGTH	CHORD	BEARING	DELTA
C1	96.00'	33.02'	32.86'	S 80°03'45"E	19°42'23"
C2	60.00'	132.32'	107.09'	S 46°36'52"W	126°21'10"
C3	96.00'	35.55'	35.35'	N 09°49'40"W	21°13'03"
C4	60.00'	307.11'	66.00'	N 00°17'18"E	293°15'58"
C5	66.00'	104.07'	93.62'	S 44°32'24"E	90°20'36"
C6	30.00'	11.12'	11.06'	N 09°30'38"W	21°14'26"
C7	126.00'	282.33'	226.86'	S 45°33'17"W	128°22'58"
C8	30.00'	10.32'	10.27'	N 80°03'44"W	19°42'23"



**LOCATION MAP**  
NOT TO SCALE



**GRAPHIC SCALE**

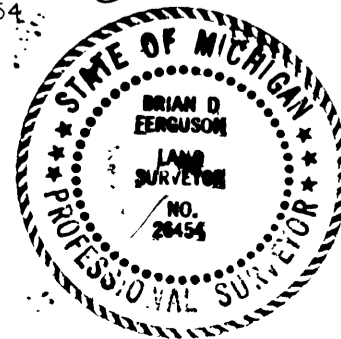


( IN FEET )  
1 inch = 80 ft.

**LEGEND**

- ALL DIMENSIONS ARE GIVEN IN FEET
- MONUMENTS CONSISTING OF IRON RODS ONE HALF INCH IN DIAMETER AND 36 INCHES IN LENGTH WITH CAP No 26454, ENCASED IN CONCRETE CYLINDERS 4 INCHES IN DIAMETER AND 36 INCHES IN LENGTH, HAVE BEEN PLACED AT ALL POINTS SHOWN BY THE SYMBOL "O"
- SET ONE HALF INCH IRON ROD, 18 INCHES IN LENGTH, WITH CAP No 26454, AT ALL LOT CORNERS
- (NR) INDICATES NON-RADIAL LINE  
(R) INDICATES RADIAL LINE
- BEARINGS WERE DERIVED FROM "WINDEMERE" RECORDED IN LIBER 24 OF PLATS, PAGES 17 AND 18, SAGINAW COUNTY, RECORDS
- INDICATES FOUND CONCRETE MONUMENT
- ALL CURVILINEAR DIMENSIONS ARE ARC LENGTHS

*Brian D. Ferguson*  
BRIAN D. FERGUSON  
P.S. No. 26454



NOTE: THERE SHALL BE NO DIRECT VEHICULAR ACCESS TO MCCARTY ROAD FROM LOTS 25, 26 AND 27.

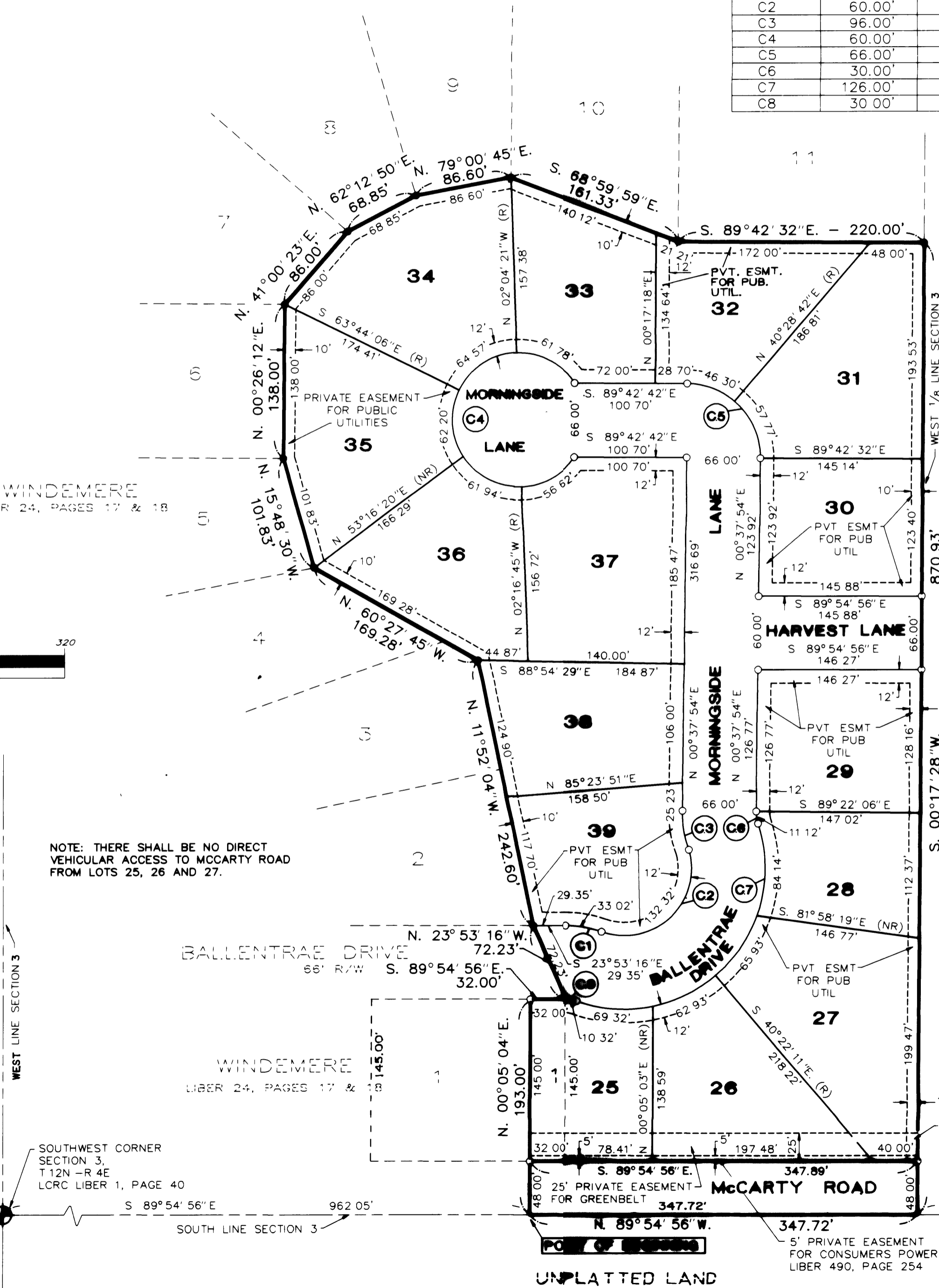
WEST LINE SECTION 3

SOUTHWEST CORNER SECTION 3, T.12N.-R.4E. LCRC LIBER 1, PAGE 40

SOUTH LINE SECTION 3

WINDEMERE  
LIBER 24, PAGES 17 & 18

WINDEMERE  
LIBER 24, PAGES 17 & 18



UNPLATTED LAND

RECORDING CERTIFICATE

State of Michigan  
Saginaw County

This plat was received for record on the 13<sup>th</sup> day of June 1994, at 4:00 P.M., and recorded in Liber 25 of plats on Page(s) 47 & 48.

*Mildred M. Dodak*  
Mildred M. Dodak, Register of Deeds

SOUTH 1/4 CORNER SECTION 3, T.12N.-R.4E. LCRC LIBER 4, PAGE 180

UNPLATTED LAND