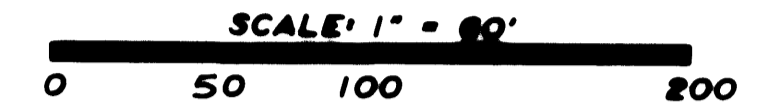


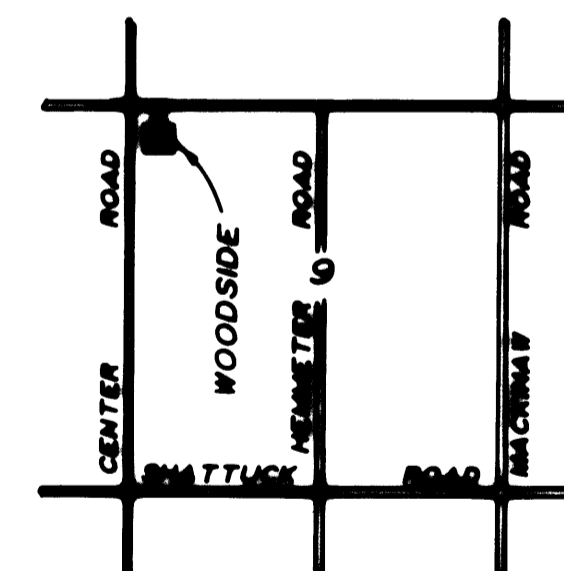
# WOODSIDE

PART OF THE NORTHWEST 1/4 OF SECTION 9, T.12N. - R.4E.  
SAGINAW TOWNSHIP, SAGINAW COUNTY, MICHIGAN

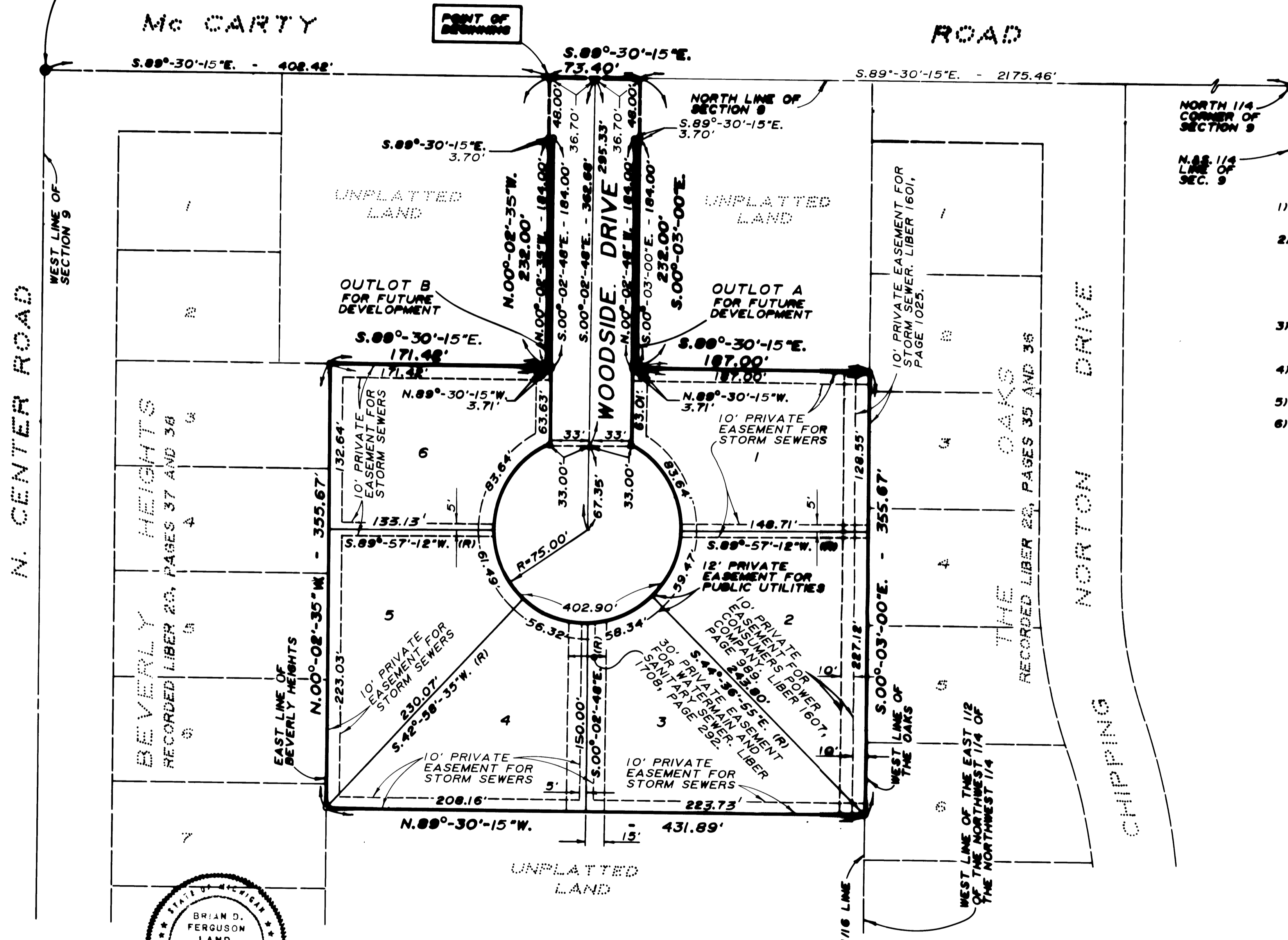
NORTHWEST CORNER OF SECTION 9, T.12N. - R.4E. SAGINAW TOWNSHIP, SAGINAW COUNTY, MICHIGAN



- LEGEND**
- 1) ALL DIMENSIONS ARE GIVEN IN FEET
  - 2) MONUMENTS CONSISTING OF IRON RODS ONE HALF INCH IN DIAMETER AND 36 INCHES IN LENGTH WITH CAP No. 26454, ENCASED IN CONCRETE CYLINDERS FOUR INCHES IN DIAMETER AND 36 INCHES IN LENGTH, HAVE BEEN PLACED AT ALL POINTS SHOWN BY SYMBOL "O".
  - 3) SET 1/2 INCH IRON ROD, 18 INCHES IN LENGTH, WITH CAP No. 26454 AT ALL PROPERTY CORNERS.
  - 4) ALL CURVILINEAR MEASUREMENTS ARE ARC DISTANCES.
  - 5) (R) INDICATES A RADIAL LINE.
  - 6) BEARINGS WERE DERIVED FROM THE OAKS RECORDED IN LIBER 22, PAGES 35 AND 36.



LOCATION MAP  
NO SCALE



**CURVE DATA**  
 R = 75.00'  
 Δ = 307°-47'-32"  
 TAN. = 36.75  
 ARC = 402.90'  
 CHORD = 66.00'  
 CHORD BEARING = S.89°-57'-12"W.



*Brian D. Ferguson*  
 BRIAN D. FERGUSON  
 L.L.S. No. 26454