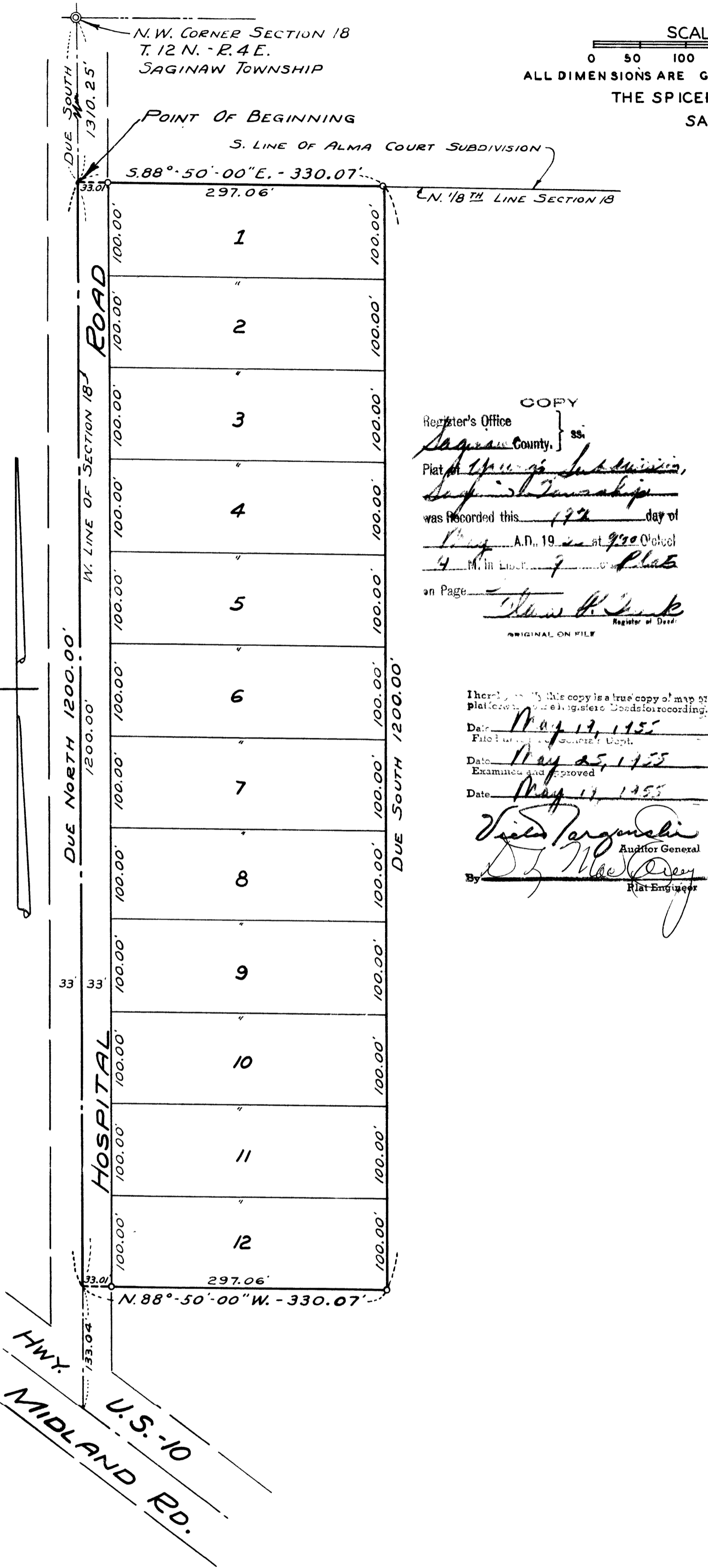


MAY 19 1955

YOUNG'S SUBDIVISION

A PART OF THE WEST FRACTIONAL HALF OF SECTION 18, T.12N-R4E.

SAGINAW TOWNSHIP, SAGINAW COUNTY, MICHIGAN.



SCALE: 1 INCH = 100 FEET
 0 50 100 200 300 400
 ALL DIMENSIONS ARE GIVEN IN FEET AND DECIMALS THEREOF
 THE SPICER ENGINEERING COMPANY
 SAGINAW, MICHIGAN
 1955

DEDICATION

KNOW ALL MEN BY THESE PRESENTS, That We, Fannie Young, a widow; Frank N. Young and Evelyn Young, his wife; and Hervey F. Beutler and Joyce E. Beutler, his wife, as proprietors, have caused the land embraced in the annexed plat to be surveyed, laid out and platted, to be known as YOUNG'S SUBDIVISION, A Part Of The West Fractional Half Of Section 18, T.12 N.-R.4 E., Saginaw Township, Saginaw County, Michigan, and that the road as shown on said plat is hereby dedicated to the use of the public.

Fannie Young (L.S.)
Frank N. Young (L.S.)
Evelyn Young (L.S.)
Hervey F. Beutler (L.S.)
Joyce E. Beutler (L.S.)

Signed and Sealed in the Presence of)

C. H. Spicer
 C. H. Spicer
James A. Bryant
 James A. Bryant

ACKNOWLEDGMENT

STATE OF MICHIGAN) ss.
 County of Saginaw)

On this 13 day of May 1955, before me a Notary Public, in and for said County, personally came the above named Fannie Young, a widow; Frank N. Young and Evelyn Young, his wife; and Hervey F. Beutler and Joyce E. Beutler his wife, known to me to be the persons who executed the above dedication and acknowledged the same to be their free act and deed.

Estelle M. Bryan
 My Commission Expires May 16, 1958 Notary Public, Saginaw County, Michigan

DESCRIPTION

The land embraced in the annexed plat of YOUNG'S SUBDIVISION, A Part Of The West Fractional Half Of Section 18, T.12 N.-R.4 E., Saginaw Township, Saginaw County, Michigan, is described as follows: Commencing at the Northwest corner of the Southwest 1/4 of the Northwest 1/4 of said Section 18; thence S.88°-50'-00"E., on the North 1/8th Line of said Section, 330.07 feet; thence Due South parallel to the West line of Section 18, 1200.00 feet; thence N.88°-50'-00"W., 330.07 feet to the West line of said Section; thence Due North on the West line of Section 18, 1200.00 feet to the point of beginning.

SURVEYOR'S CERTIFICATE

I hereby certify that the plat hereon delineated is a correct one and that permanent metal monuments consisting of bars not less than one-half inch in diameter and 36 inches in length, or shorter bars of not less than one-half inch in diameter lapped over each other at least 6 inches with an over-all length of not less than 36 inches, encased in a concrete cylinder at least 1/4 inches in diameter and 36 inches in depth have been placed at points marked thus o as thereon shown at all angles in the boundaries of the land platted, at all intersections of streets, and at the intersections of streets with the boundaries of the plat as shown on said plat.

Clifford H. Spicer
 Clifford H. Spicer Registered Land Surveyor

CERTIFICATE OF APPROVAL BY BOARD OF COUNTY ROAD COMMISSIONERS

This plat has been examined and was approved on the 26 day of April 1955 by the Saginaw County Board of Road Commissioners.

The Board of Road Commissioners of Saginaw County, Michigan, assumes no responsibility for the improvement or maintenance of the streets and roads shown on this plat until such time as they have been graded and drained with the necessary drainage structures installed and a gravel, slag, or cinder surface having a compacted thickness of at least 6 inches and a width of at least 18 feet has been applied and approved by this board.

Albert M. Wille Chairman
William M. Trim Member
Frank Dudewicz Member

CERTIFICATE OF MUNICIPAL APPROVAL

This plat was approved by the Township Board of the Township of Saginaw at a meeting held 14 (Date) May 1955.

Walter Dietzel Clerk

CERTIFICATE OF APPROVAL BY THE COUNTY PLAT BOARD

This plat was approved by the County Plat Board of Saginaw County, Michigan this 13 day of May 1955.

Clara P. Turek
 Clara P. Turek, Register of Deeds-Chairman
Peter Girard Auditor
George Cavanaugh Auditor
William A. Case Auditor

COPY
 Register's Office
 Saginaw County, ss.
 Plat of Young's Subdivision,
Saginaw Township,
 was recorded this 17 day of
May, A.D. 1955 at 9:50 O'clock
4 M. in Book 7 Page
Thomas H. Spink
 Register of Deeds
 ORIGINAL ON FILE

I hereby certify this copy is a true copy of map or plat as shown to me by the Register of Deeds for recording.
 Date May 17, 1955
 Filed May 17, 1955
 Date May 25, 1955
 Examined and approved
 Date May 17, 1955
Vito J. Argonali Auditor General
Clifford H. Spicer Plat Engineer

COUNTY TREASURER'S CERTIFICATE RELATING TO TAXES
 (Sec. 135, Act 206, 1893 as amended - Sec. 4134, C. L. 1915.)
 Office of County Treasurer, Saginaw County

I hereby certify, that there are no tax liens or titles held by the State on the land described hereon, and that there are no tax liens or titles held by individuals on said lands, for the five years preceding the day of May 1955, and that the taxes for said period of five years are all paid, as shown by the records of this office.

This certificate does not apply to taxes, if any, now in process of collection by township, city or village collecting officers.

Carl G. Little
 Carl G. Little County Treasurer