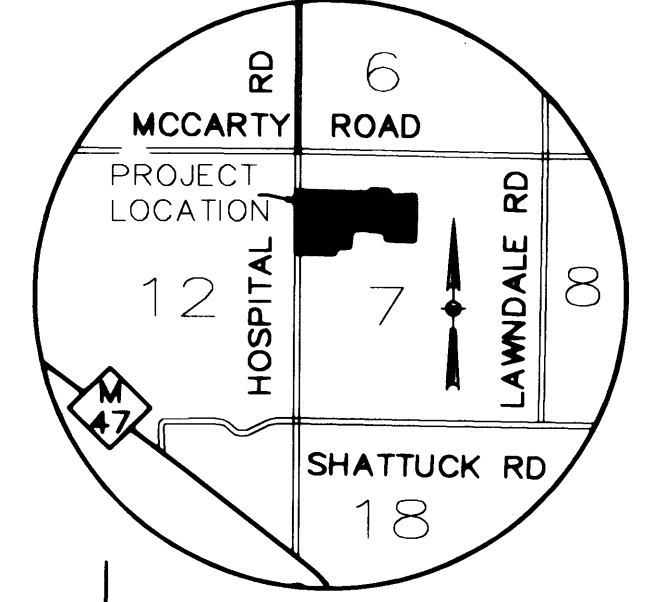
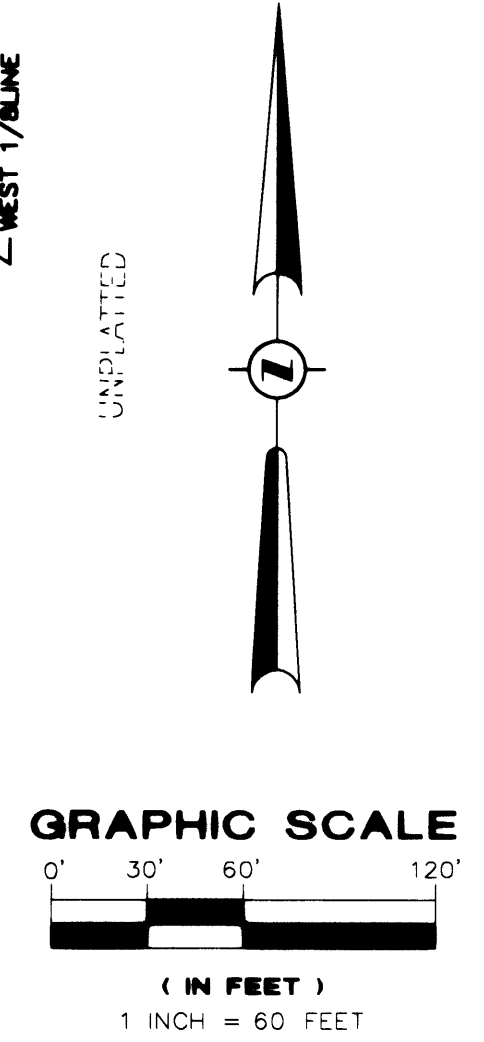
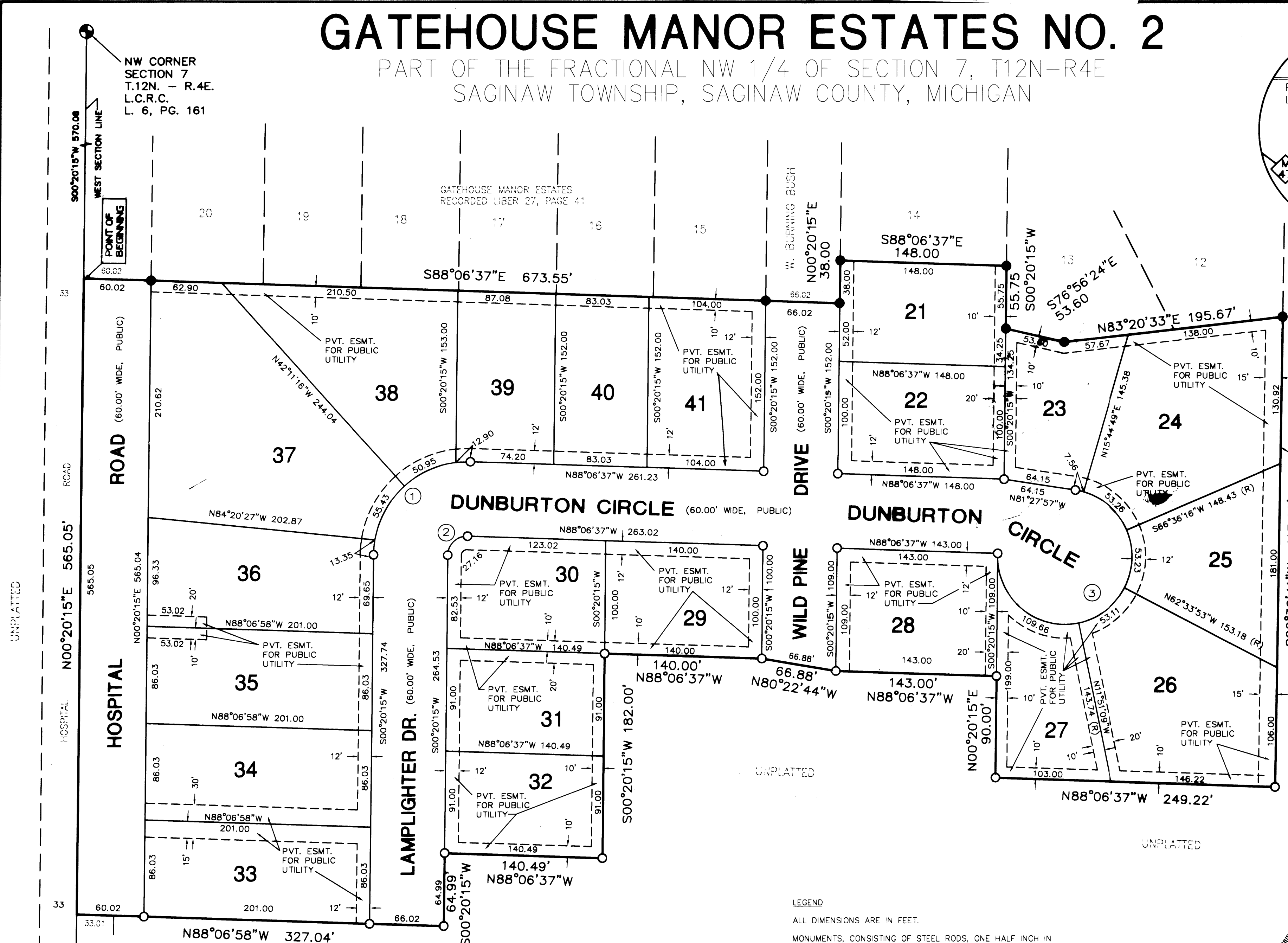


GATEHOUSE MANOR ESTATES NO. 2

PART OF THE FRACTIONAL NW 1/4 OF SECTION 7, T12N-R4E
 SAGINAW TOWNSHIP, SAGINAW COUNTY, MICHIGAN



LOCATION MAP
 NOT TO SCALE

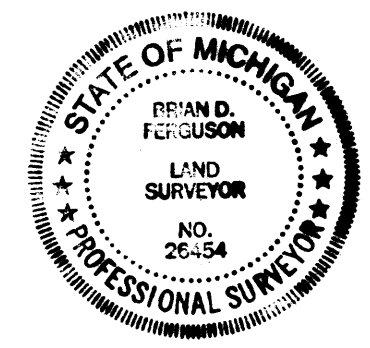


LEGEND

ALL DIMENSIONS ARE IN FEET.
 MONUMENTS, CONSISTING OF STEEL RODS, ONE HALF INCH IN DIAMETER AND 36 INCHES IN LENGTH WITH CAP NO. 26454, ENCASED IN CONCRETE CYLINDERS, 4 INCHES IN DIAMETER AND 36 INCHES IN LENGTH, HAVE BEEN PLACED AT ALL POINTS SHOWN BY SYMBOL "O".
 SET 1/2 INCH STEEL ROD, 18 INCHES IN LENGTH WITH CAP NO. 26454, AT ALL LOT CORNERS.
 "●" INDICATES FOUND CONCRETE MONUMENT 4 INCHES IN DIAMETER WITH A 1/2 INCH STEEL ROD.
 ALL CURVILINEAR DIMENSIONS ARE ARC LENGTHS.
 (NR) INDICATES NON-RADIAL LINE.
 (R) INDICATES RADIAL LINE.
 BEARINGS AS SHOWN ARE REFERENCED TO THE RECORDED PLAT OF GATEHOUSE MANOR ESTATES AS RECORDED IN LIBER 27 OF PLATS, PAGE 41.

CURVE TABLE

NO.	RADIUS	ARC	CHORD	CHORD BEARING	DELTA
1	83.00	132.63	118.98	N46°06'49"E	91°33'08"
2	17.00	27.16	24.37	N46°06'49"E	91°33'08"
3	60.00	276.81	88.94	S50°41'51"W	264°19'59"



Brian D. Ferguson
 BRIAN D FERGUSON, PS #26454