

LATHRUP PARK SUBDIVISION

SAGINAW TOWNSHIP - SAGINAW COUNTY - MICHIGAN

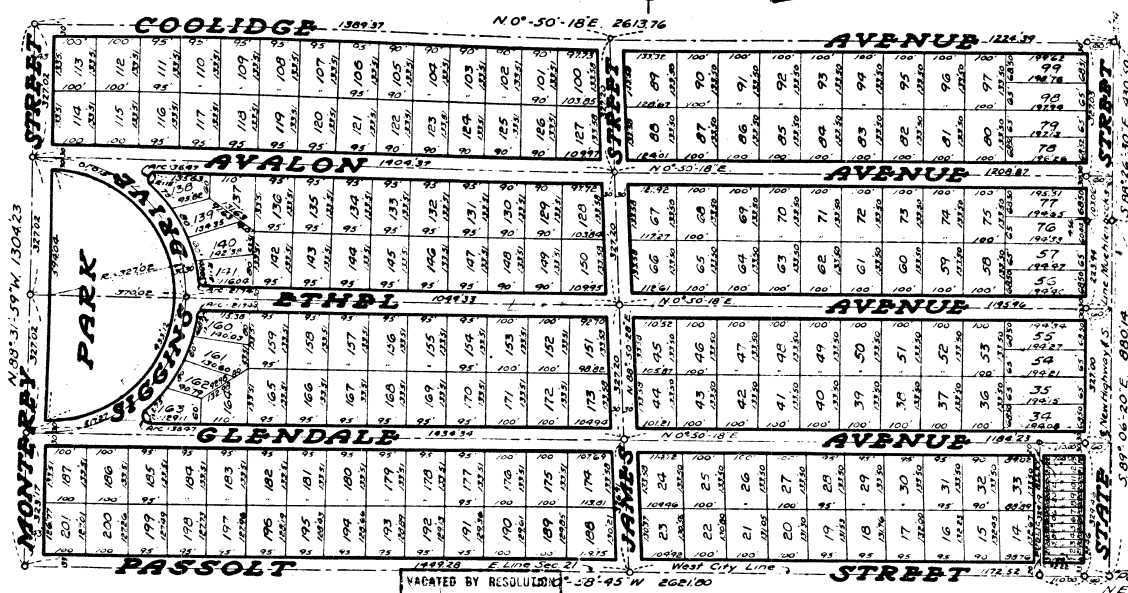
SCALE - 1 INCH = 200 FEET

All dimensions are given in feet and decimals thereof. Standard temperature 68°

Examined and Approved
Nov 22-1929
J. L. Jolley
County Auditor

THE FRANCIS ENGINEERING COMPANY - SAGINAW, MICHIGAN

Nov 30-1929
J. L. Jolley
County Auditor



No building or building line here or part thereof except unenclosed porches may occupy all or any part of that space lying between the street lines of Glendale Ave and a line 10' from and parallel thereto and designated building line in lots 13 and 34 and also that space in lot 14 lying parallel thereto designated building line.

N. E. corner of Sec. 21 - 112 N. - 92 E.
S. 89° 06' 20\"/>

DEDICATION

Know all men by these presents, That we, Margaret Lathrup Michell, Elizabeth Lathrup, Gladys Lathrup Siggins, Douglas Lathrup and Edna Lathrup his wife, and Earl Lathrup and Olive Lathrup his wife as proprietors have caused the land embraced in the annexed plat to be surveyed, laid out and platted, to be known as "Lathrup Park Subdivision," Saginaw Township, Saginaw County, Michigan and that the streets, alleys, park as shown on said plat are hereby dedicated to the use of the public.

Signed and Sealed in Presence of

- Anis Lathrup —
- Margaret Lathrup Michell — L.S
- Elizabeth Lathrup — L.S
- Gladys Lathrup Siggins — L.S
- Douglas Lathrup — L.S
- Edna Lathrup — L.S
- Earl Lathrup — L.S
- Olive Lathrup — L.S

STATE OF MICHIGAN, ss
County of Oakland } ss
On this 13th day of October, 1929 before me, a Notary Public in and for said County, personally came the above named Margaret Lathrup Michell, Elizabeth Lathrup, Gladys Lathrup Siggins, Douglas Lathrup and Edna Lathrup his wife, and Earl Lathrup and Olive Lathrup his wife, known to me to be the persons who executed the above dedication and acknowledged the same to be their free act and deed.

Notary Public Oakland County, Michigan.
My Commission expires Oct. 29, 1932.

SURVEYOR'S CERTIFICATE

I hereby certify that the plat hereon delineated is a correct one and that permanent metal monuments of not less than one inch in diameter and fifteen inches in length set in a concrete base of least four inches in diameter and forty-eight inches in depth have been placed at points marked thus as thereon shown at all angles in the boundaries of the land platted, at all the intersections of streets, of streets and alleys, and at the intersections of streets with the boundaries of the plat as shown on said plat.

Registered Civil Engineer.

CERTIFICATE AS TO STATE TRUNK LINE OR FEDERAL AIDED ROADS

We hereby certify that said plat appears to include land located on a state trunk line or federal aided road.

Examined and approved 11/21/29
Victor R. Quastner, Deputy State Highway Commissioner

CERTIFICATE OF APPROVAL BY THE BOARD OF COUNTY AUDITORS

Approved by the Board of County Auditors of Saginaw County, Michigan, this 13 day of November, 1929.

W. L. Jolley, Chairman
J. L. Jolley, County Auditor

CERTIFICATE OF MUNICIPAL APPROVAL

This plat was approved by the City Plan Commission of the City of Saginaw at a meeting held Nov 5, 1929.

Secretary.

CERTIFICATE OF MUNICIPAL APPROVAL

This plat was approved by the Township Board of the Township of Saginaw at a meeting held Oct 22, 1929.

Clerk

COUNTY TREASURER'S CERTIFICATE RELATING TO TAXES

(Sec. 135, Act 206, 1893 as amended - Sec. 4134, C.L. 1915.)
Office of County Treasurer, Saginaw County, Michigan.

I hereby certify that there are no tax liens or titles held by the State on the lands described below, and that there are no tax liens or titles held by individuals on said lands, for the five years preceding the 13th day of Oct. 1929 and that the taxes for said period of five years are all paid, as shown by the records of this office.

This certificate does not apply to taxes, if any, now in process of collection by township, city, or village collecting officers.

The land embraced in the annexed plat of Lathrup Park Subdivision, Saginaw Township, Saginaw County, Michigan is described as being a portion of the E 1/2 of E 1/2 of Sec. 21 - T. 12 N. - R. 4 E.

N. E. Deagle,
County Treasurer.

DESCRIPTION

The land embraced in the annexed plat of Lathrup Park Subdivision, Saginaw Township, Saginaw County, Michigan is described as follows: Commencing at the N. E. corner of the present city limits of the City of Saginaw, Michigan and which point is also the S. E. corner of Muehlenbeck Subdivision; thence from said point of beginning S. 0° 58' 45\"/>

Examined and Approved
Nov 22-1929
J. L. Jolley
County Auditor

Lathrup Park Sub
26
Nov 11, 1929
a in 5
on Page 22
E. R. Jolley