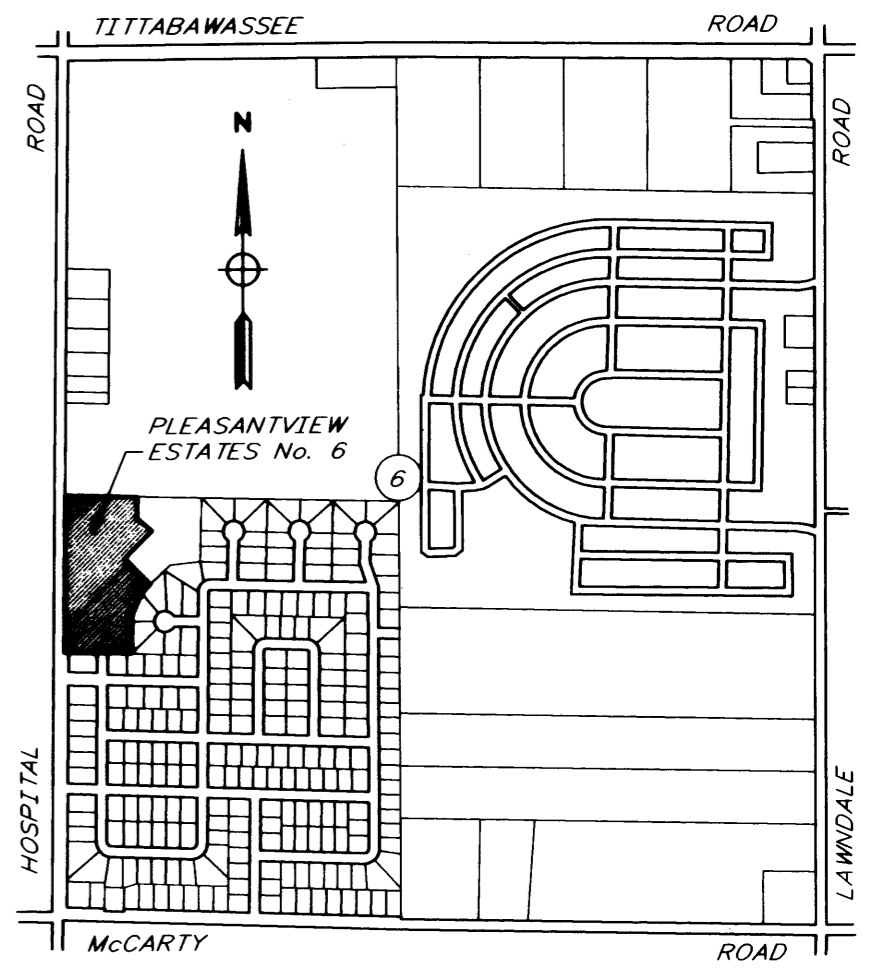
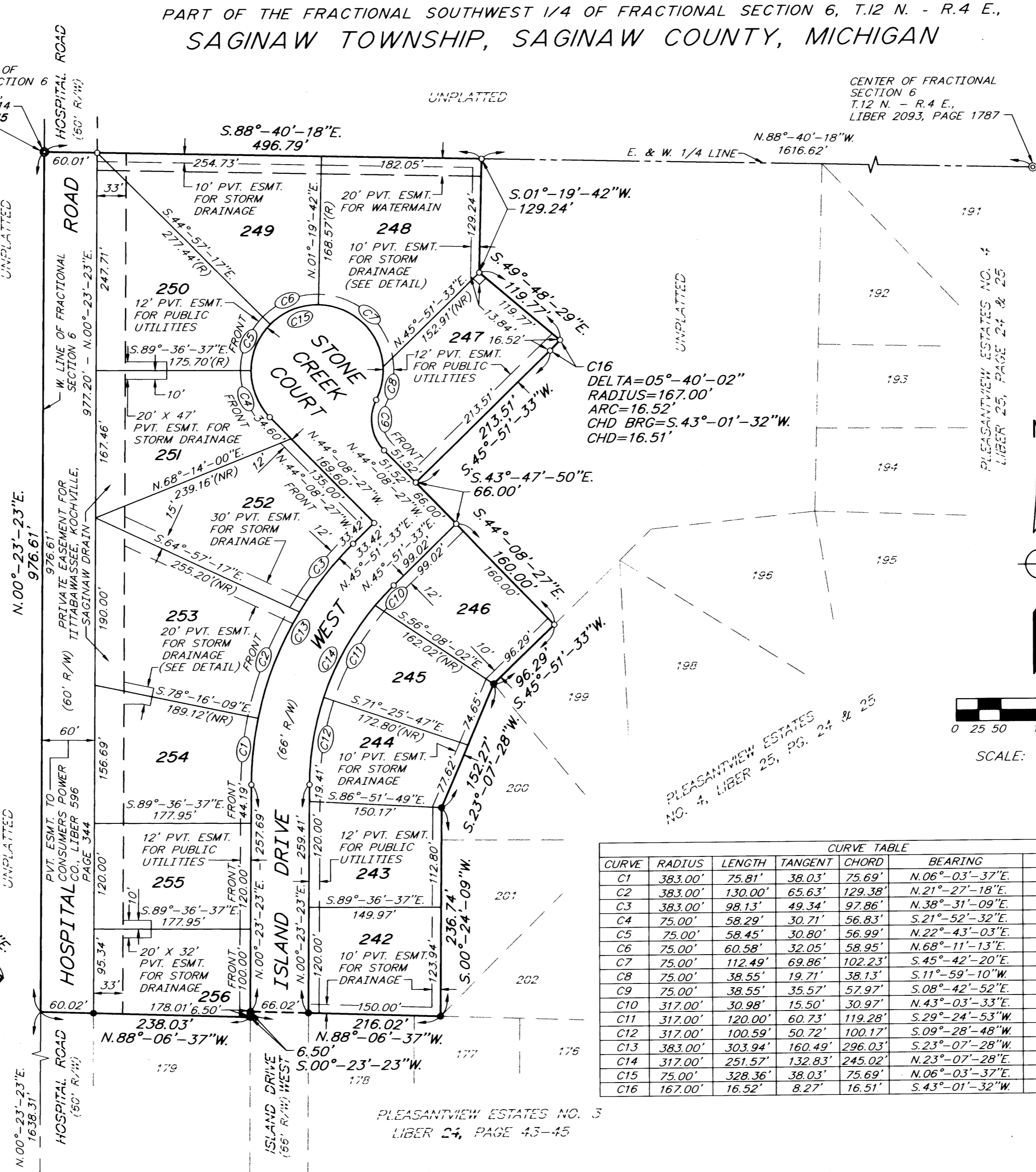
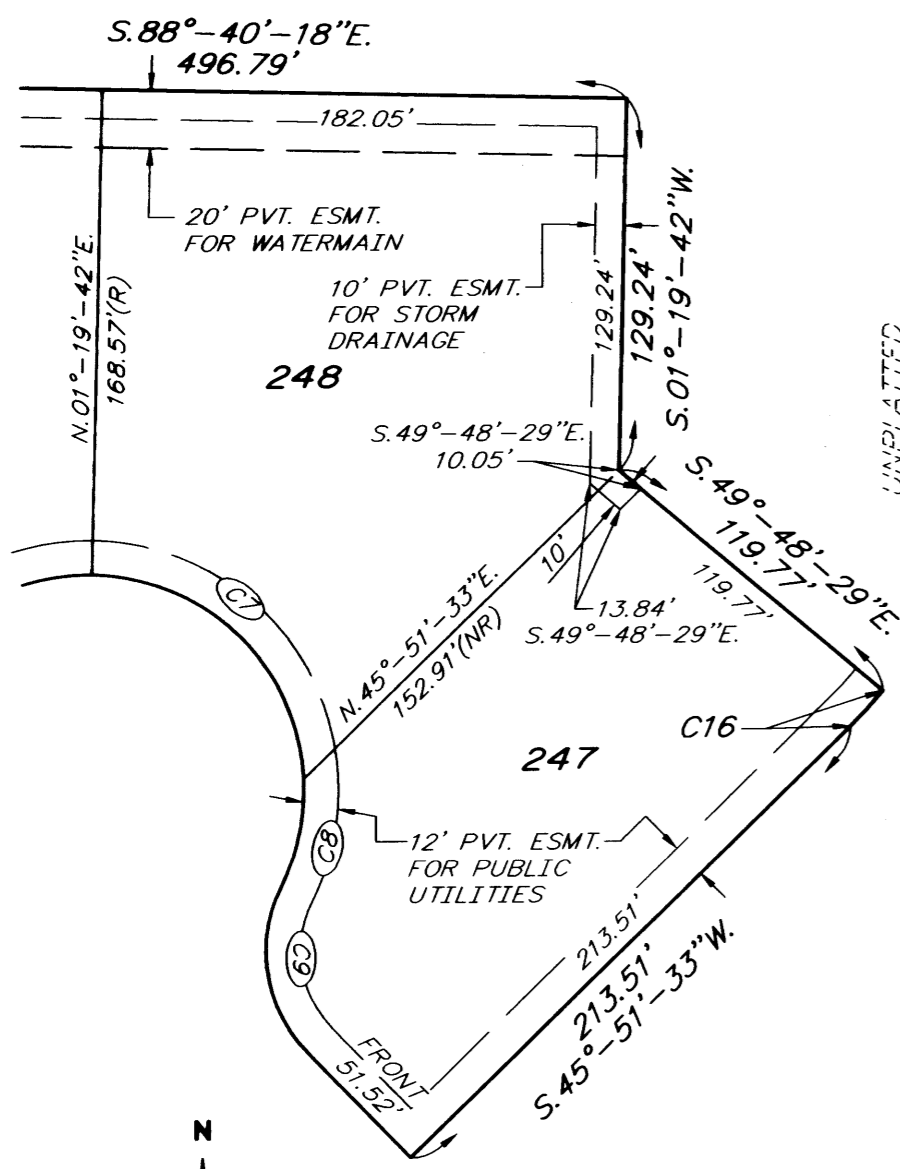


PLEASANTVIEW ESTATES NO.6

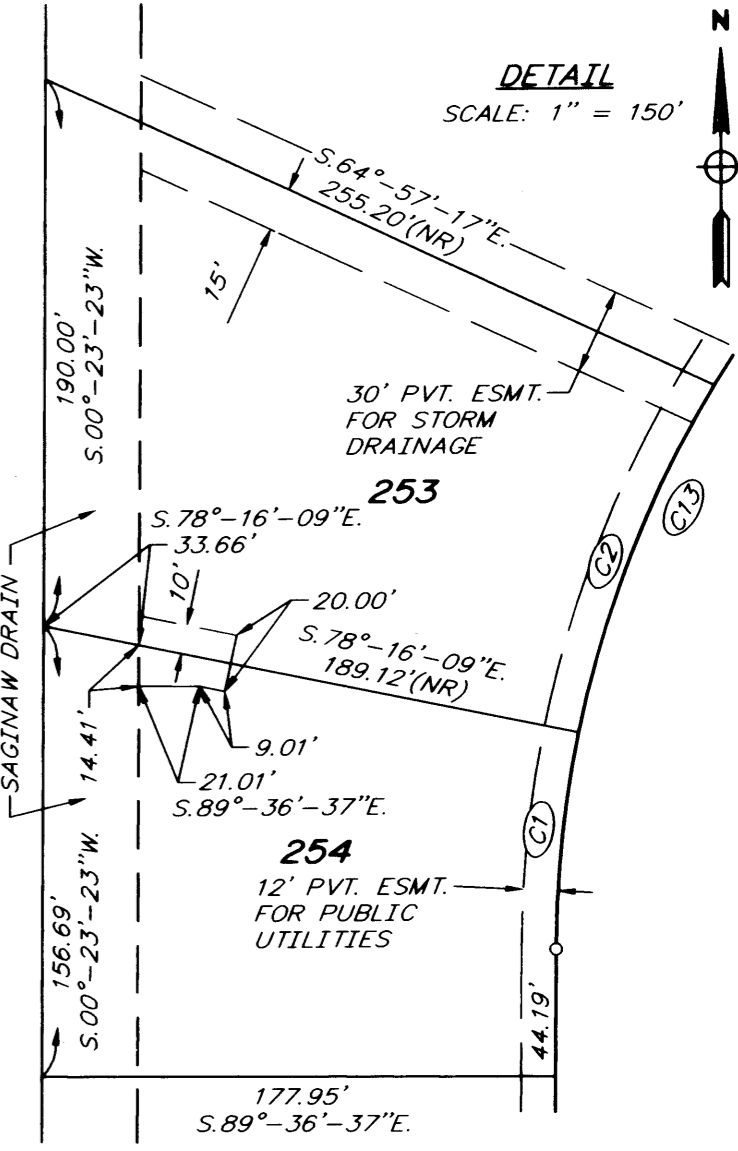
PART OF THE FRACTIONAL SOUTHWEST 1/4 OF FRACTIONAL SECTION 6, T.12 N. - R.4 E.,
SAGINAW TOWNSHIP, SAGINAW COUNTY, MICHIGAN

LEGEND

- 1-ALL DIMENSIONS ARE IN FEET.
- 2-MONUMENTS CONSISTING OF STEEL RODS ONE HALF INCH IN DIAMETER AND 36 INCHES IN LENGTH WITH CAP NO. 41115, ENCASED IN CONCRETE CYLINDERS FOUR INCHES IN DIAMETER AND 36 INCHES IN LENGTH, HAVE BEEN PLACED AT ALL POINTS MARKED "o".
- 3-SET 3/4 INCH STEEL PIPE BY 18 INCHES IN LENGTH WITH CAP NO. 41115 AT ALL LOT CORNERS.
- 4-BEARINGS ARE ESTABLISHED FROM "PLEASANTVIEW ESTATES No. 4" RECORDED IN LIBER 25 OF PLATS ON PAGES 24 AND 25, SAGINAW COUNTY RECORDS.
- 5-ALL CURVILINEAR MEASUREMENTS ARE ARC DISTANCES.
- 6-(R) INDICATES RADIAL LINE
- 7-(NR) INDICATES NON-RADIAL LINE
- 8-SURVEY CORNERS HAVE BEEN FOUND AT ALL POINTS MARKED "©" AND ARE DESCRIBED IN THE NOTED LIBER AND PAGE.
- 9-(C) - INDICATES CURVE DATA
- 10-"•" INDICATES FOUND 1/2" DIA. STEEL RODS ENCASED IN 4 INCH DIA. CONCRETE CYLINDERS.



CURVE	RADIUS	LENGTH	TANGENT	CHORD	BEARING	DELTA
C1	383.00'	75.81'	38.03'	75.69'	N.06°-03'-37"E.	11°-20'-28"
C2	383.00'	130.00'	65.63'	129.38'	N.21°-27'-18"E.	19°-26'-53"
C3	383.00'	98.13'	49.34'	97.86'	N.38°-31'-09"E.	14°-40'-49"
C4	75.00'	58.29'	30.71'	56.83'	S.21°-52'-32"E.	44°-31'-50"
C5	75.00'	58.45'	30.80'	56.99'	N.22°-43'-03"E.	44°-39'-20"
C6	75.00'	60.58'	32.05'	58.95'	N.68°-11'-13"E.	46°-16'-59"
C7	75.00'	112.49'	69.86'	102.23'	S.45°-42'-20"E.	85°-55'-56"
C8	75.00'	38.55'	19.71'	38.13'	S.11°-59'-10"W.	29°-27'-04"
C9	75.00'	38.55'	35.57'	52.97'	S.08°-42'-52"E.	70°-51'-09"
C10	317.00'	30.98'	15.50'	30.97'	N.43°-03'-33"E.	05°-36'-00"
C11	317.00'	120.00'	60.73'	119.28'	S.29°-24'-53"W.	21°-41'-20"
C12	317.00'	100.59'	50.72'	100.17'	S.09°-28'-48"W.	18°-10'-50"
C13	383.00'	303.94'	160.49'	296.03'	S.23°-07'-28"W.	45°-28'-10"
C14	317.00'	251.57'	132.83'	245.02'	N.23°-07'-28"E.	45°-28'-10"
C15	75.00'	328.36'	38.03'	75.69'	N.06°-03'-37"E.	250°-51'-09"
C16	167.00'	16.52'	8.27'	16.51'	S.43°-01'-32"W.	05°-40'-02"



Jeffrey E. Wood 9-10-02
Jeffrey E. Wood, P.S. Date
Michigan Registration No. 4115
230 South Washington Avenue
Saginaw, Michigan 48605

Dale K. Deibel 9-10-02
Dale K. Deibel, P.E. Date
President
230 South Washington Avenue
Saginaw, Michigan 48605

