

ALLEN PARK "A"

A PART OF S.E. 1/4 OF S.E. 1/4 SECTION 20, T.12 N.-R.4 E.
SAGINAW TOWNSHIP, SAGINAW COUNTY, MICHIGAN

SCALE: 1 INCH = 100 FEET
0 50 100 200 300 400
ALL DIMENSIONS ARE GIVEN IN FEET AND DECIMALS THEREOF
THE SPICER ENGINEERING COMPANY

CERTIFICATE OF MUNICIPAL APPROVAL

SAGINAW, MICHIGAN
1957

DEDICATION

This plat was approved by the Township Board of the Township of Saginaw at a meeting held on the 19th day of February, 1957.

Walter Dietzel
Township Clerk

KNOW ALL MEN BY THESE PRESENTS, That we, Felix Wolderzak and Alma Wolderzak, his wife, as proprietors, have caused the land embraced in the annexed plat to be surveyed, laid out and platted to be known as ALLEN PARK "A", A Part Of S.E. 1/4 Of S.E. 1/4 Section 20, T.12 N.-R.4 E., Saginaw Township, Saginaw County, Michigan, and that the Road, Drive and Lane as shown on said plat are hereby dedicated to the use of the public, excepting however, from this dedication land designated "Two Foot Reservation," such land to be dedicated automatically for street purposes at such time as street extensions adjacent thereto are dedicated in adjoining property.

Signed and Sealed in the Presence of)

Estelle M. Bryan
O. H. Spicer

Felix Wolderzak (L.S.)
Alma Wolderzak (L.S.)

ACKNOWLEDGMENT

STATE OF MICHIGAN)
County of Saginaw) ss.

On this 12th day of March, 1957, before me, a Notary Public in and for said County, appeared Felix Wolderzak and Alma Wolderzak, his wife, known to me to be the persons who executed the above dedication and acknowledged the same to be their free act and deed.

My Commission Expires May 16, 1958
Notary Public, Saginaw County, Michigan

DESCRIPTION

The land embraced in the annexed plat of ALLEN PARK "A", A Part Of S.E. 1/4 Of S.E. 1/4 Section 20, T.12 N.-R.4 E., Saginaw Township, Saginaw County, Michigan, is described as follows: Commencing at a point on the South line of said Section, 981.74 feet S.89°-53'-30"W., along said South line from the Southeast corner of said Section 20; thence S.89°-53'-30"W., along said South line, 328.08 feet to the East 1/8th line of said Section 20; thence N.00°-13'-00"W., along said East 1/8th line, 1311.95 feet to the South line of the plat of ALLEN PARK; thence N.89°-55'-45"E., along said South plat line, 328.84 feet; thence S.00°-13'-00"E., 1311.74 feet to the point of beginning. This plat contains 26 Lots numbered consecutively from 1 to 26 inclusive.

SURVEYOR'S CERTIFICATE

I hereby certify that the plat hereon delineated is a correct one and that permanent metal monuments consisting of bars not less than one-half inch in diameter and 36 inches in length, or shorter bars of not less than one-half inch in diameter lapped over each other at least 6 inches with an over-all length of not less than 36 inches, encased in a concrete cylinder at least 4 inches in diameter and 26 inches in depth have been placed at points marked thus o as thereon shown and at all angles in the boundaries of the land platted, at all intersections of streets, and at the intersections of streets with the boundaries of the plat as shown on said plat.

Clifford H. Spicer
Registered Land Surveyor

CERTIFICATE OF APPROVAL BY BOARD OF COUNTY ROAD COMMISSIONERS

This plat has been examined and was approved on the 26th day of February, 1957 by the Saginaw County Board of Road Commissioners.

The Board of County Road Commissioners of Saginaw County, Michigan, assume no responsibility for the improvement or maintenance of the Roads or Streets shown on this Plat until such time as the following conditions have been met and approved by this Board.

All Roads and Streets are to be graded and drained with necessary drainage structures installed and a roadway surface, which shall consist of crushed stone or natural gravel conforming to Michigan State Highway Department Specifications 21A. The surface shall have a minimum width of 18 feet and a compacted thickness of 6 inches. When crushed stone is used the top 2 inches shall be 21A with screenings added to provide a dense wearing course.

William M. Trim Chairman
Frank Dudowicz Member
Harold H. Bauer Member

COUNTY TREASURER'S CERTIFICATE RELATING TO TAXES
(Sec. 135, Act 206, 1893 as amended - Sec. 413, C. L. 1915.)
Office of County Treasurer, Saginaw County

I hereby certify, that there are no tax liens or titles held by the State on the land described hereon, and that there are no tax liens or titles held by individuals on said lands, for the five years preceding the 26th day of March, 1957, and that the taxes for said period of five years are all paid, as shown by the records of this office.

This certificate does not apply to taxes, if any, now in process of collection by township, city or village collecting officers.

Carl O. Little
County Treasurer

CERTIFICATE OF APPROVAL BY THE COUNTY PLAT BOARD

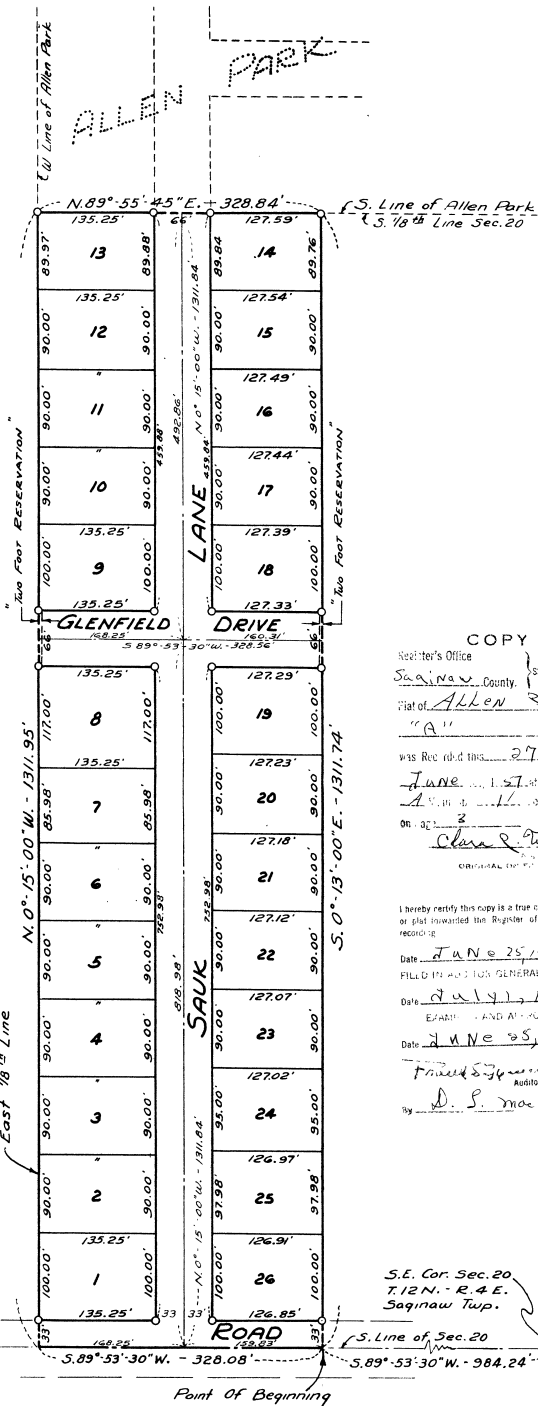
This plat was approved by the County Plat Board of Saginaw County, Michigan, this 23rd day of April, 1957.

Clara E. Turek
Register of Deeds-Chairman
Peter Girard Auditor
William A. Case Auditor
John H. Deibel Auditor

CERTIFICATE OF APPROVAL BY CITY PLANNING COMMISSION

This plat was approved by the City Planning Commission of the City of Saginaw, Michigan, at a meeting held on the 19th day of February, 1957.

Russel O. Koenig
Director



COPIES
Recorder's Office } ss.
Saginaw County }
Plat of Allen Park
"A"
was Recorded this 27 day of
June, 1957.
Clara E. Turek
Register of Deeds

I hereby certify this copy is a true copy of map or plat forwarded the Register of Deeds for recording.
Date JUNE 25, 1957
FILED IN AND THE GENERAL'S D.P.T.
Date JULY 1, 1957
EARTH AND AIRWAY D
Date JUNE 25, 1957
Frank S. Johnson
Auditor General
By D. S. Matthey

S.E. Cor. Sec. 20
T.12 N.-R.4 E.
Saginaw Twp.

1/8th Line of Sec. 20
1/8th of N. Center Road