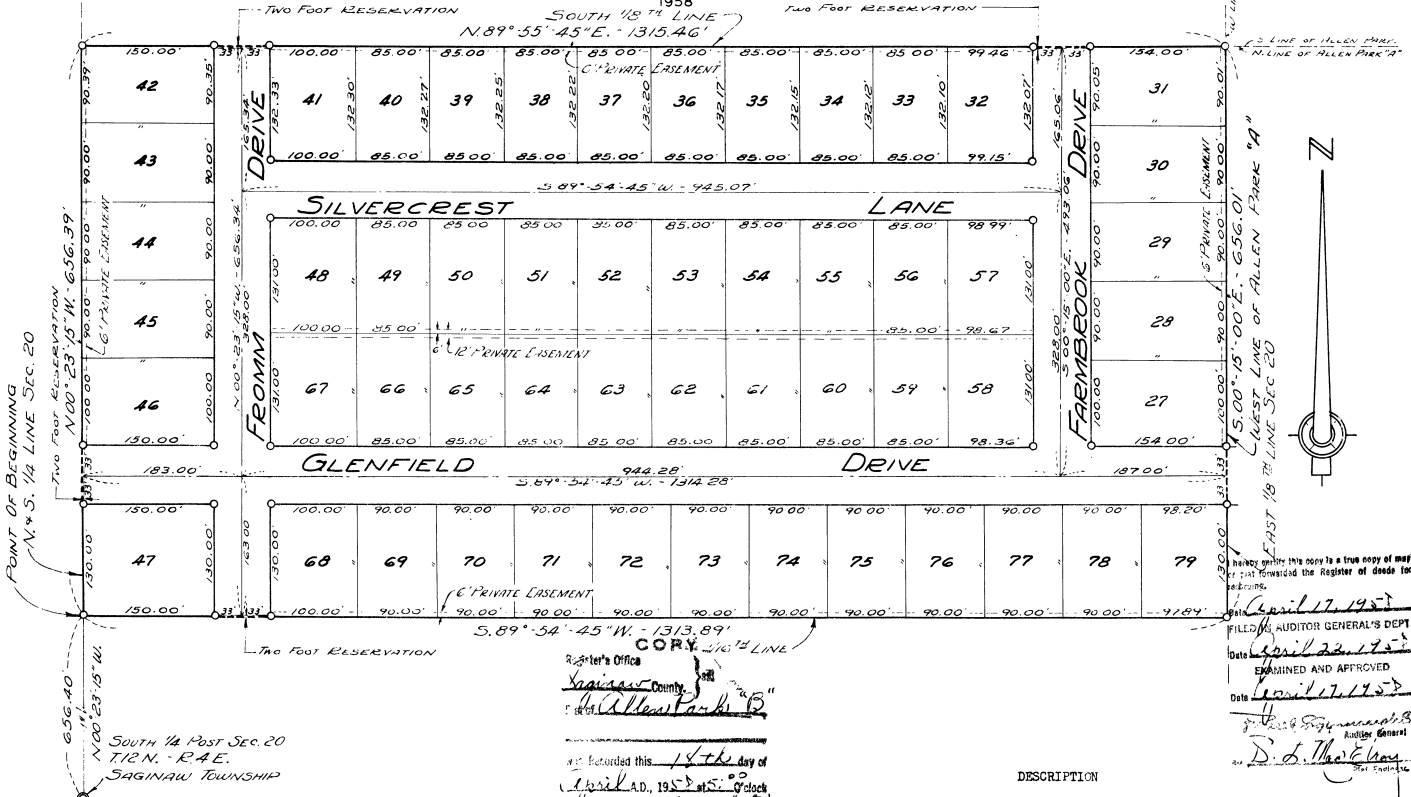


ALLEN PARK "B"

A PART OF SW 1/4 OF S.E. 1/4 SECTION 20, T.12 N.-R.4 E.
SAGINAW TOWNSHIP, SAGINAW COUNTY, MICHIGAN

SCALE: 1 INCH = 100 FEET
ALL DIMENSIONS ARE GIVEN IN FEET AND DECIMALS THEREOF
THE SPICER ENGINEERING COMPANY
SAGINAW, MICHIGAN, 1958



KNOW ALL MEN BY THESE PRESENTS, That we, Felix Wolderzak and Alma Wolderzak, his wife, as proprietors, have caused the land embraced in the annexed plat to be surveyed, laid out and platted to be known as ALLEN PARK "B", A Part Of S.W. 1/4 Of S.E. 1/4, Section 20, T.12 N.-R.4 E., Saginaw Township, Saginaw County, Michigan, and that the Drives and Lane as shown on said plat are hereby dedicated to the use of the public, Excepting however, from this dedication land designated "Two Foot Reservation," such land to be dedicated automatically for street purposes at such time as street extensions adjacent thereto are dedicated in adjoining property.

Signed and Sealed in the Presence of
 Felix Wolderzak (L.S.)
 Alma Wolderzak (L.S.)
 Estelle M. Bryan
 Otto G. Schiesswohl

ACKNOWLEDGMENT
 STATE OF MICHIGAN
 County of Saginaw
 On this 14th day of April, 1958, before me, a Notary Public in and for said County, appeared Felix Wolderzak and Alma Wolderzak, his wife, known to me to be the persons who executed the above dedication and acknowledged the same to be their free act and deed.
 My Commission Expires May 16, 1958

COUNTY TREASURER'S CERTIFICATE RELATING TO TAXES
 (Sec. 135, Act 206, 1893 as amended - Sec. 1134, C. L. 1915.)
 Office of County Treasurer, Saginaw County
 I hereby certify, that there are no tax liens or titles held by the State on the land described hereon, and that there are no tax liens or titles held by individuals on said lands, for the five years preceding the 14th day of April, 1958, and that the taxes for said period of five years are paid, as shown by the records of this office.

This certificate does not apply to taxes, if any, now in process of collection by township, city or village collecting officers.
 Carl S. Little, County Treasurer

CERTIFICATE OF APPROVAL BY THE COUNTY PLAT BOARD
 This plat was approved by the County Plat Board of Saginaw County, Michigan, this 14th day of April, 1958.

Clara P. Turek, Register of Deeds-Chairman
 Ben J. Wacker, Auditor
 William A. Case, Auditor
 John H. Deibel, Auditor

Recorded this 14th day of April, A.D., 1958, at 10:00 o'clock A.M. in Liber 11 of Maps, at Saginaw, Michigan.
 Register of Deeds
 Saginaw County, Michigan
 Allen Park "B"

DESCRIPTION
 The land embraced in the annexed plat of ALLEN PARK "B", A Part Of S.W. 1/4 Of S.E. 1/4, Section 20, T.12 N.-R.4 E., Saginaw Township, Saginaw County, Michigan, is described as follows: Commencing at a point on the North and South 1/4 line of said Section, 656.10 feet N.00°-23'-15"W., along said line from the South 1/4 post of said Section 20; thence N.00°-23'-15"W., along said quarter line 656.39 feet to the South 1/8th line of said Section 20; thence N.89°-55'-45"E., along said eighth line 1315.16 feet to the northeast corner of the recorded plat of Allen Park "A"; thence S.00°-15'-00"E., along the West line of Allen Park "A" 656.01 feet; thence S.89°-54'-15"W., 1313.89 feet to the point of beginning. This plat contains 53 Lots numbered consecutively from 27 to 79 inclusive.

SURVEYOR'S CERTIFICATE
 I hereby certify that the plat hereon delineated is a correct one and that permanent metal monuments consisting of bars not less than one-half inch in diameter and 36 inches in length, or shorter bars of not less than one-half inch in diameter lapped over each other at least 6 inches with an over-all length of not less than 36 inches, enclosed in a concrete cylinder at least 4 inches in diameter and 36 inches in depth have been placed at points marked thus o as thereon shown at all angles in the boundaries of the land platted, at all intersections of streets, and at the intersections of streets with the boundaries of the plat as shown on said plat.
 Clifford H. Spicer, Registered Land Surveyor

CERTIFICATE OF APPROVAL BY BOARD OF COUNTY ROAD COMMISSIONERS
 This plat, has been examined and was approved on the 10th day of March, 1958 by the Saginaw County Board of Road Commissioners.

The Board of County Road Commissioners of Saginaw County, Michigan, assumes no responsibility for the improvement or maintenance of the Roads or Streets shown on this Plat until such time as the following conditions have been met and approved by this Board.
 All Roads and Streets are to be graded and drained with necessary drainage structures installed and a roadway surface, which shall consist of crushed stone or natural gravel conforming to Michigan State Highway Department Specifications 21A. The surface shall have a minimum width of 18 feet and a compacted thickness of 6 inches. When crushed stone is used the top 2 inches shall be 21A with screenings added to provide a dense wearing course.
 Harold H. Bauer, Chairman
 Frank Dudewicz, Member
 William M. Trim, Member

CERTIFICATE OF APPROVAL BY CITY PLANNING COMMISSION
 This plat was approved by the City Planning Commission of the City of Saginaw, Michigan, at a meeting held on the 25th day of February, 1958.

CERTIFICATE OF MUNICIPAL APPROVAL
 This plat was approved by the Township Board of the Township of Saginaw at a meeting held on the 9th day of April, 1958.
 Herbert W. Hochhammer, Township Clerk

FILED IN AUDITOR GENERAL'S DEPT.
 April 22, 1958
 EXAMINED AND APPROVED
 April 17, 1958
 D. S. Theobald, Auditor General