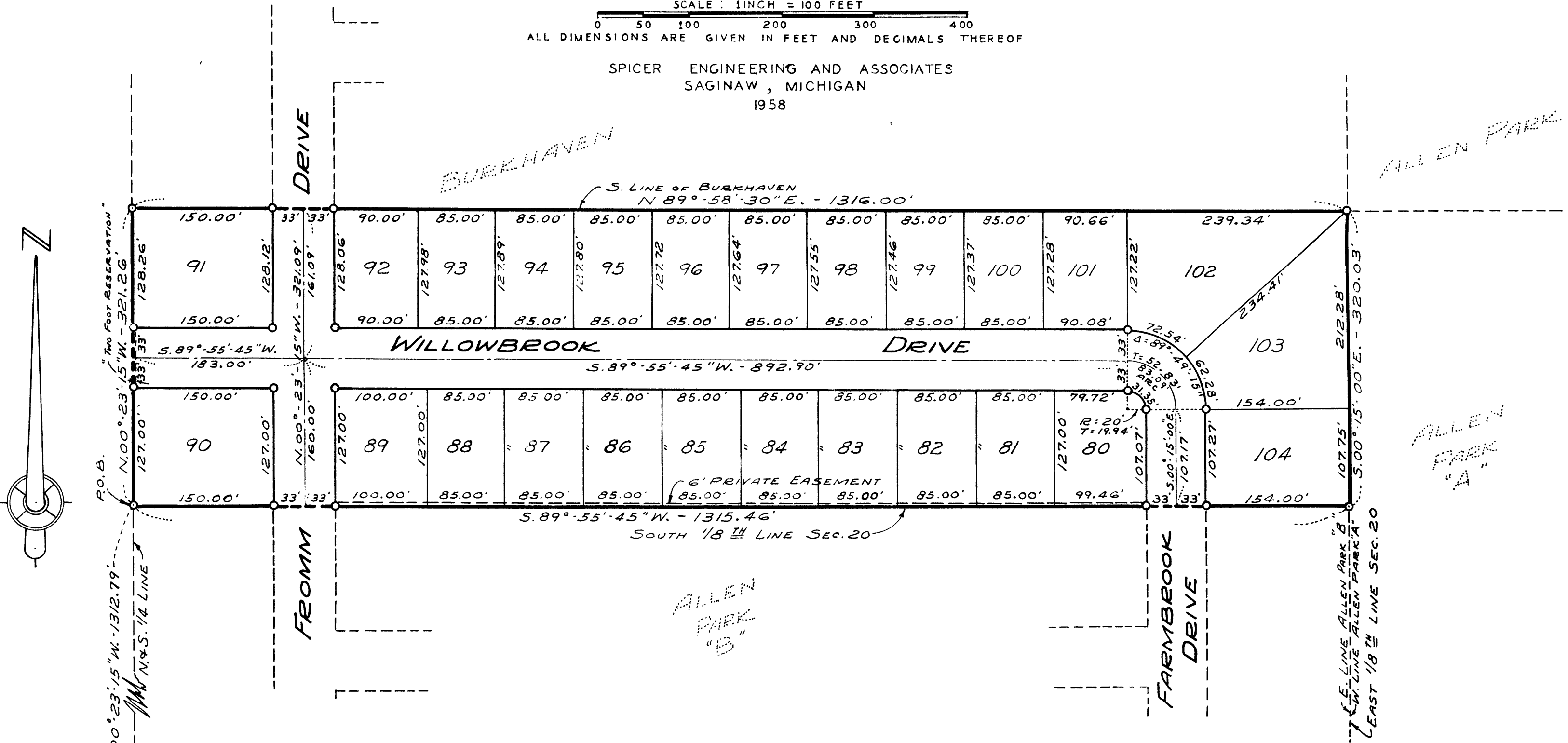


ALLEN PARK "C"

A PART OF N.W. 1/4 OF S.E. 1/4 SECTION 20, T. 12 N. - R. 4 E.
SAGINAW TOWNSHIP, SAGINAW COUNTY, MICHIGAN

SCALE: 1 INCH = 100 FEET
ALL DIMENSIONS ARE GIVEN IN FEET AND DECIMALS THEREOF

SPICER ENGINEERING AND ASSOCIATES
SAGINAW, MICHIGAN
1958



DESCRIPTION

The land embraced in the annexed plat of ALLEN PARK "C", A Part Of N.W. 1/4 Of S.E. 1/4, Section 20, T. 12 N. - R. 4 E., Saginaw Township, Saginaw County, Michigan, is described as follows: Commencing at a point on the North and South 1/4 line of said Section 20, 1312.79 feet N.00°-23'-15"W., along said line from the South 1/4 post of said Section, said point being the Northwest corner of the recorded plat of Allen Park "B"; thence continuing N.00°-23'-15"W., along said quarter line 321.26 feet to the South line of the recorded plat of "Burkhaven"; thence N.89°-58'-30"E., along said South plat line 1316.00 feet to the East 1/8th line of said Section 20 and the Northwest corner of the recorded plat of Allen Park "A"; thence S.00°-15'-00"E., along said eighth line 320.03 feet to the Northeast corner of the recorded plat of Allen Park "B" and the South 1/8th line of said Section 20; thence S.89°-55'-45"W., along said eighth line and the North line of the recorded plat of Allen Park "B" 1315.46 feet to the point of beginning. This plat contains 25 Lots numbered consecutively from 80 to 104 inclusive.

SURVEYOR'S CERTIFICATE

I hereby certify that the plat herein delineated is a correct one and that permanent metal monuments consisting of bars not less than one-half inch in diameter and 36 inches in length, or shorter bars of not less than one-half inch in diameter lapped over each other at least 6 inches with an over-all length of not less than 36 inches, encased in a concrete cylinder at least 4 inches in diameter and 36 inches in depth have been placed at points marked thus \odot as thereon shown at all angles in the boundaries of the land platted, at all intersections of streets, at points of curvature and points of tangency in street lines, and at the intersections of streets with the boundaries of the plat as shown on said plat.

Clifford H. Spicer - Registered Land Surveyor

CERTIFICATE OF APPROVAL BY CITY PLANNING COMMISSION

This plat was approved by the City Planning Commission of the City of Saginaw, Michigan, at a meeting held on the 11th day of December, 1958.

John B. Dempsey - Director

CERTIFICATE OF MUNICIPAL APPROVAL

This plat was approved by the Township Board of the Township of Saginaw at a meeting held on the 5th day of June, 1959.

Herbert W. Hochthanner - Township Clerk

CERTIFICATE OF APPROVAL BY BOARD OF COUNTY ROAD COMMISSIONERS

This plat has been examined and was approved on the 13th day of June, 1959, by the Saginaw County Board of Road Commissioners.

The Board of County Road Commissioners of Saginaw County, Michigan, assume no responsibility for the improvement or maintenance of the Roads or Streets shown on this Plat until such time as the following conditions have been met and approved by this Board.

All Roads and Streets are to be graded and drained with necessary drainage structures installed and a roadway surface, which shall consist of crushed stone or natural gravel conforming to Michigan State Highway Department Specifications 21A. The surface shall have a minimum width of 18 feet and a compacted thickness of 6 inches. When crushed stone is used the top 2 inches shall be 21A with screenings added to provide a dense wearing course.

Harold H. Bauer - Chairman
William M. Trim - Member
Frank Dudewicz - Member

KNOW ALL MEN BY THESE PRESENTS, That we, Felix Wolderzak and Alma Wolderzak, his wife, as proprietors, have caused the land embraced in the annexed plat to be surveyed, laid out and platted to be known as ALLEN PARK "C", A Part Of N.W. 1/4 Of S.E. 1/4, Section 20, T. 12 N. - R. 4 E., Saginaw Township, Saginaw County, Michigan, and that the Drives as shown on said plat are hereby dedicated to the use of the public, Excepting however, from this dedication land designated "Two Foot Reservation," such land to be dedicated automatically for street purposes at such time as street extensions adjacent thereto are dedicated in adjoining property.

Signed and Sealed in the Presence of

Felix Wolderzak (L.S.)
Alma Wolderzak (L.S.)

Norma J. Wegner
Estelle M. Bryan

ACKNOWLEDGMENT

STATE OF MICHIGAN) ss.
County of Saginaw) On this 16th day of April, 1959, before me, a Notary Public in and for said County, appeared Felix Wolderzak and Alma Wolderzak, his wife, known to me to be the persons who executed the above dedication and acknowledged the same to be their free act and deed.

Estelle M. Bryan
Notary Public, Saginaw County, Michigan

My Commission Expires May 18, 1962

COUNTY TREASURER'S CERTIFICATE RELATING TO TAXES
(Sec. 135, Act 206, 1893 as amended - Sec. 4134, C. L. 1915.)
Office of County Treasurer, Saginaw County

I hereby certify, that there are no tax liens or titles held by the State on the land described hereon, and that there are no tax liens or titles held by individuals on said lands, for the five years preceding the 13th day of December, 1958, and that the taxes for said period of five years are all paid, as shown by the records of this office.

This certificate does not apply to taxes, if any, now in process of collection by township, city or village collecting officers.

Carl O. Little - County Treasurer

CERTIFICATE OF APPROVAL BY THE COUNTY PLAT BOARD

This plat was approved by the County Plat Board of Saginaw County, Michigan, this 16th day of April, 1959.

Clara P. Turek - Register of Deeds - Chairman
Benj. G. Wacker - Auditor
William A. Case - Auditor
John H. Deibel - Auditor

FILED IN AUDITOR GENERAL'S DEPT.
EXAMINED AND APPROVED
Auditor General