

ALLEN PARK "D"

A PART OF E. 1/2 OF E. 1/2 OF S.W. 1/4 OF SECTION 20, T.12N - R.4 E.
SAGINAW TOWNSHIP - SAGINAW COUNTY - MICHIGAN.

SCALE: 1 INCH = 100 FEET
0 50 100 200 300 400
ALL DIMENSIONS ARE GIVEN IN FEET AND DECIMALS THEREOF

SPICER ENGINEERING AND ASSOCIATES
SAGINAW, MICHIGAN
1959

DEDICATION

KNOW ALL MEN BY THESE PRESENTS, That we, Felix Woldersak and Alma Woldersak, his wife, as proprietors, have caused the land embraced in the annexed plat to be surveyed, laid out and platted to be known as ALLEN PARK "D", A Part Of E. 1/2 Of E. 1/2 Of S.W. 1/4 Of Section 20, T.12 N.-R.4 E., Saginaw Township, Saginaw County, Michigan, and that the Drives and Road as shown on said plat are hereby dedicated to the use of the public, Excepting however, from this dedication land designated "Two Foot Reservation," such land to be dedicated automatically for street purposes at such time as street extensions adjacent thereto are dedicated in adjoining property.

Signed and Sealed in the Presence of
Felix Woldersak (L.S.)
Alma Woldersak (L.S.)
C. H. Spicer
Estelle M. Bryan

ACKNOWLEDGMENT

STATE OF MICHIGAN ss.
County of Saginaw ss.
On this 17th day of December 1959, before me, a Notary Public in and for said County, appeared Felix Woldersak and Alma Woldersak, his wife, known to me to be the persons who executed the above dedication and acknowledged the same to be their free act and deed.
My Commission Expires May 18, 1962
Estelle M. Bryan
Notary Public, Saginaw County, Michigan

DESCRIPTION

The land embraced in the annexed plat of ALLEN PARK "D", A Part Of E. 1/2 Of E. 1/2 Of S.W. 1/4 Of Section 20, T.12 N.-R.4 E., Saginaw Township, Saginaw County, Michigan, is described as follows: Commencing at the South 1/4 post of said Section 20; thence N.89°-54'-15"W., along the South line of said Section, 329.14 feet; thence N.00°-22'-00"W., 944.44 feet; thence S.89°-58'-00"E., 328.79 feet to the North and South 1/4 line of said Section 20; thence S.00°-23'-15"E., along said line 944.79 feet to the point of beginning. This plat contains 18 Lots numbered consecutively from 105 to 122 inclusive.

SURVEYOR'S CERTIFICATE

I hereby certify that the plat hereon delineated is a correct one and that permanent metal monuments consisting of bars not less than one-half inch in diameter and 36 inches in length, or shorter bars of not less than one-half inch in diameter lapped over each other at least 6 inches with an over-all length of not less than 36 inches, encased in a concrete cylinder at least 4 inches in diameter and 36 inches in depth have been placed at points marked thus o as thereon shown at all angles in the boundaries of the land platted, at all intersections of streets, and at the intersections of streets with the boundaries of the plat as shown on said plat.

Clifford H. Spicer - Registered Land Surveyor

CERTIFICATE OF APPROVAL BY CITY PLANNING COMMISSION

This plat was approved by the City Planning Commission of the City of Saginaw, Michigan, at a meeting held on the 24 day of September 1959.
John B. Dempsey - Secretary

CERTIFICATE OF APPROVAL BY BOARD OF COUNTY ROAD COMMISSIONERS

This plat has been examined and was approved on the 4th day of JANUARY 1960 by the Saginaw County Board of Road Commissioners.
The Board of County Road Commissioners of Saginaw County, Michigan, assumes no responsibility for the improvement or maintenance of the Roads or Streets shown on this Plat until such time as the following conditions have been met and approved by this Board.

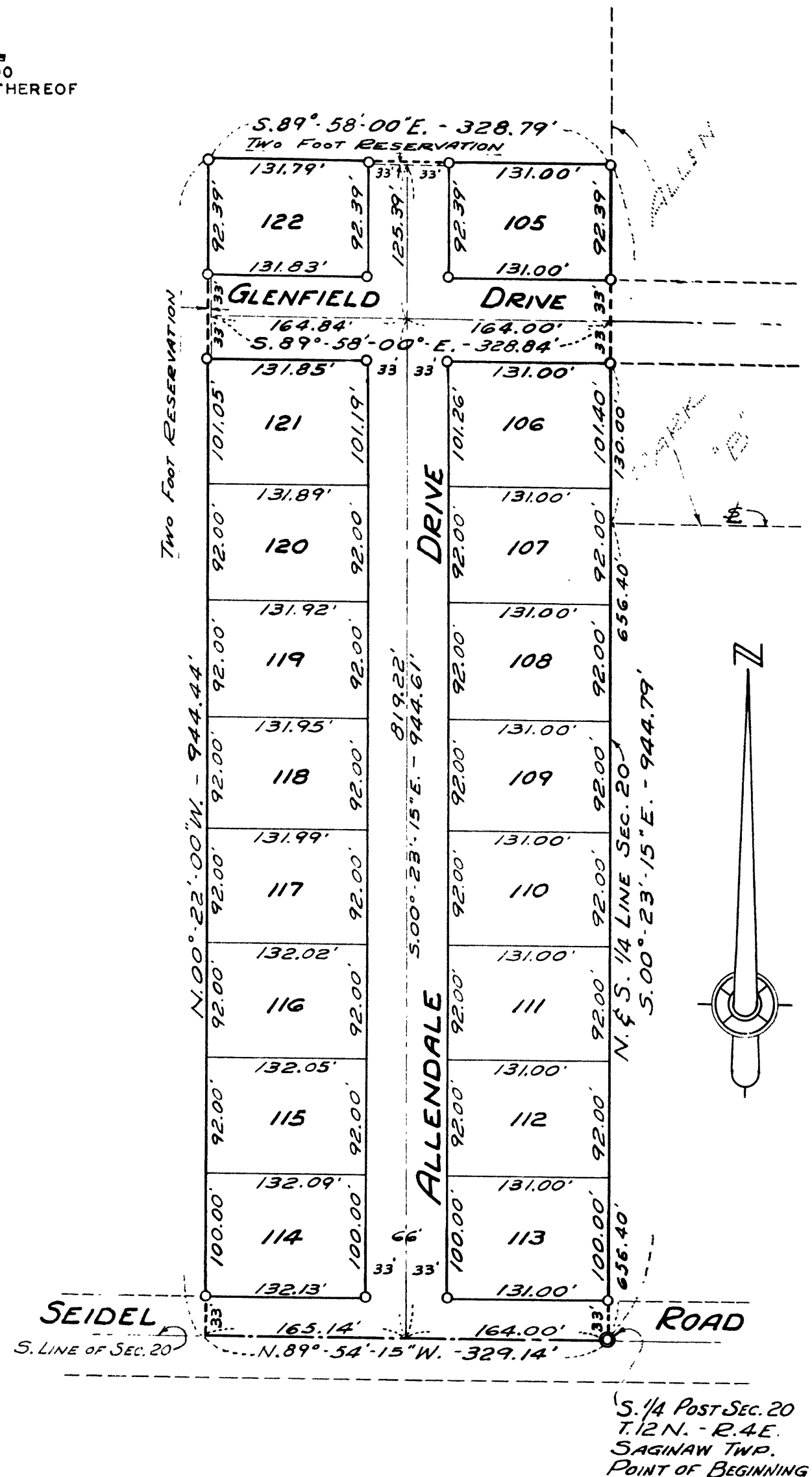
All Roads and Streets are to be graded and drained with necessary drainage structures installed and a roadway surface, which shall consist of crushed stone or natural gravel conforming to Michigan State Highway Department Specifications 21A. The surface shall have a minimum width of 18 feet and a compacted thickness of 6 inches. When crushed stone is used the top 2 inches shall be 21A with screenings added to provide a dense wearing course.

Harold H. Bauer - Chairman
William M. Trim - Member
Frank Dudewicz - Member

April 18, 1960
April 21, 1960
April 18, 1960

D. L. Mac Ehoj

Allen Park "D"
April 18, 1960 at 5:00 PM
Clara P. Turek



SEIDEL ROAD
S. LINE OF SEC. 20
N. 89°-54'-15" W. - 329.14'
S. 1/4 POST SEC. 20
T. 12 N. - R. 4 E.
SAGINAW TWP.
POINT OF BEGINNING

COUNTY TREASURER'S CERTIFICATE RELATING TO TAXES
(Sec. 135, Act 206, 1893 as amended - Sec. 4134, C.L. 1915.)
Office of County Treasurer, Saginaw County
I hereby certify, that there are 700 tax liens or titles held by the State on the land described hereon, and that there are 700 tax liens or titles held by individuals on said lands, for the five years preceding the 23rd day of December 1959, and that the taxes for said period of five years are all paid, as shown by the records of this office.

Carl O. Little - County Treasurer

CERTIFICATE OF MUNICIPAL APPROVAL

This plat was approved by the Township Board of the Township of Saginaw at a meeting held on the 17th day of Sept 1959.
H. W. Hochthanner - Township Clerk

CERTIFICATE OF APPROVAL BY THE COUNTY PLAT BOARD

This plat was approved by the County Plat Board of Saginaw County, Michigan, this 12th day of April 1960.
Clara P. Turek, Register of Deeds - Chairman
Benj. G. Wacker - Auditor
William A. Case - Auditor
John H. Deibel - Auditor
H. J. Dietrich, Saginaw County Drain Commissioner