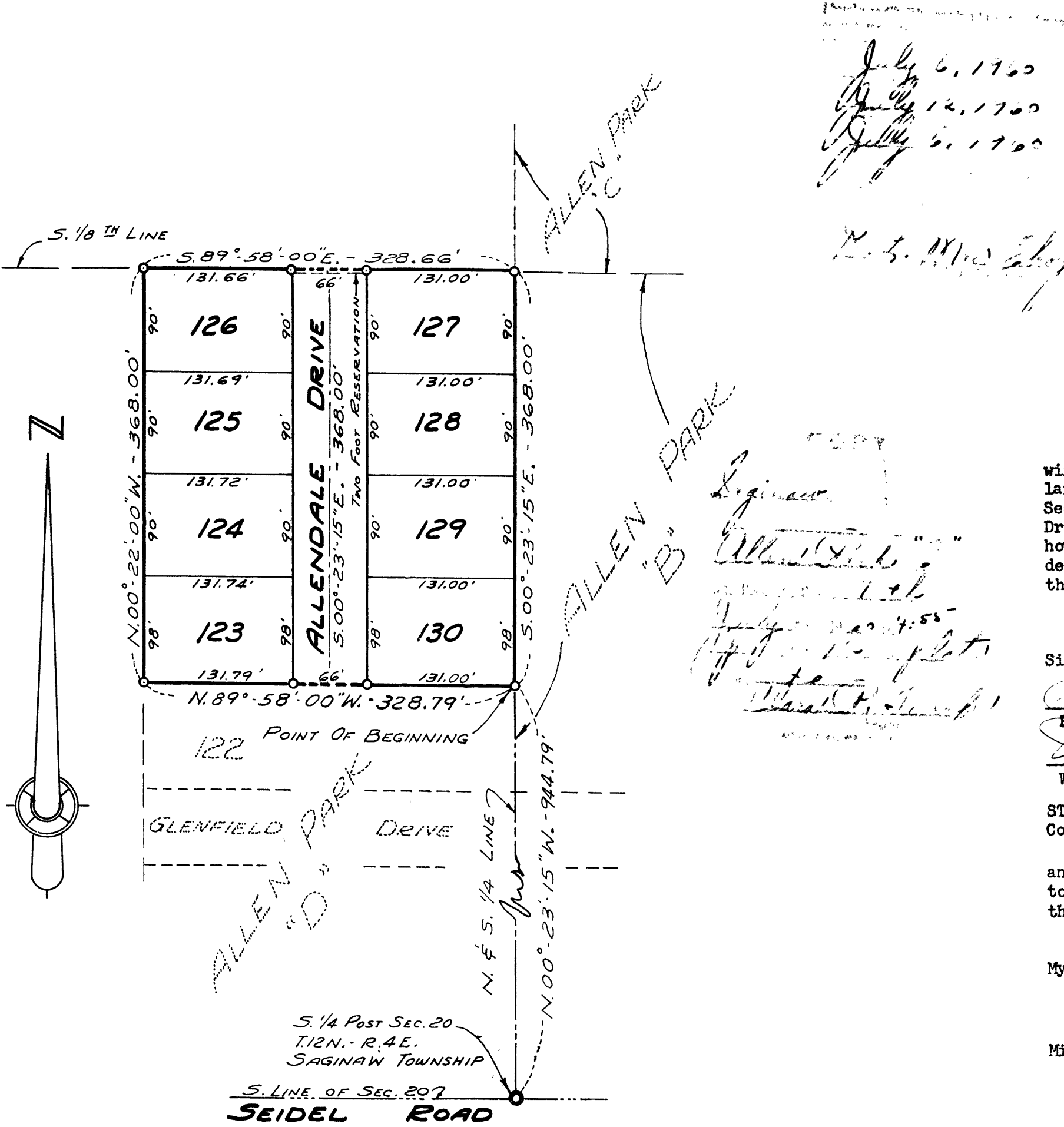


# ALLEN PARK "E"

A PART OF E. 1/2 OF E. 1/2 OF S.W. 1/4 OF SECTION 20, T.12N. - R.4 E.  
SAGINAW TOWNSHIP - SAGINAW COUNTY - MICHIGAN.

SCALE: 1 INCH = 100 FEET  
ALL DIMENSIONS ARE GIVEN IN FEET AND DECIMALS THEREOF

SPICER ENGINEERING COMPANY  
SAGINAW, MICHIGAN  
1960



### DEDICATION

KNOW ALL MEN BY THESE PRESENTS, That we, Felix Wolderzak and Alma Wolderzak, his wife, as proprietors, have caused the land embraced in the annexed plat to be surveyed, laid out and platted to be known as ALLEN PARK "E", A Part Of E. 1/2 Of E. 1/2 Of S.W. 1/4 Of Section 20, T.12 N.-R.4 E., Saginaw Township, Saginaw County, Michigan, and that the Drive as shown on said plat is hereby dedicated to the use of the public, Excepting however, from this dedication land designated "Two Foot Reservation," such land to be dedicated automatically for street purposes at such time as street extensions adjacent thereto are dedicated in adjoining property.

Signed and Sealed in the Presence of  
 Estelle M. Bryan  
 Warren G. Wills  
 Felix Wolderzak (L.S.)  
 Alma Wolderzak (L.S.)

### ACKNOWLEDGMENT

STATE OF MICHIGAN)ss.  
 County of Saginaw)  
 On this 9th day of June 1960, before me, a Notary Public in and for said County, appeared Felix Wolderzak and Alma Wolderzak, his wife, known to me to be the persons who executed the above dedication and acknowledged the same to be their free act and deed.

My Commission Expires May 18, 1962  
 Estelle M. Bryan  
 Notary Public, Saginaw County, Michigan

### CERTIFICATE OF APPROVAL BY CITY PLANNING COMMISSION

This plat was approved by the City Planning Commission of the City of Saginaw, Michigan, at a meeting held on the 24 day of May 1960.  
 John B. Dempsey  
 Secretary

### COUNTY TREASURER'S CERTIFICATE RELATING TO TAXES

(Sec. 135, Act 206, 1893 as amended - Sec. 4134, C. L. 1915.)  
 Office of County Treasurer, Saginaw County

I hereby certify, that there are no tax liens or titles held by the State on the land described hereon, and that there are no tax liens or titles held by individuals on said lands, for the five years preceding the 9th day of June 1960, and that the taxes for said period of five years are paid, as shown by the records of this office.

This certificate does not apply to taxes, if any, now in process of collection by township, city or village collecting officers.  
 Carl S. Little  
 County Treasurer

### CERTIFICATE OF MUNICIPAL APPROVAL

This plat was approved by the Township Board of the Township of Saginaw at a meeting held on the 8th day of June 1960.  
 Clarence Radewahn  
 Township Clerk

### CERTIFICATE OF APPROVAL BY BOARD OF COUNTY ROAD COMMISSIONERS

This plat has been examined and was approved on the 21 day of June 1960 by the Saginaw County Board of Road Commissioners.

The Board of County Road Commissioners of Saginaw County, Michigan, assumes no responsibility for the improvement or maintenance of the Roads or Streets shown on this Plat until such time as the following conditions have been met and approved by this Board.

All Roads and Streets are to be graded and drained with necessary drainage structures installed and a roadway surface, which shall consist of crushed stone or natural gravel conforming to Michigan State Highway Department Specifications 21A. The surface shall have a minimum width of 18 feet and a compacted thickness of 6 inches. When crushed stone is used the top 2 inches shall be 21A with screenings added to provide a dense wearing course.

Frank Dudewicz  
 Chairman  
 William M. Trim  
 Member  
 Harold H. Bauer  
 Member

### DESCRIPTION

The land embraced in the annexed plat of ALLEN PARK "E", A Part Of E. 1/2 Of E. 1/2 Of S.W. 1/4 Of Section 20, T.12 N.-R.4 E., Saginaw Township, Saginaw County, Michigan, is described as follows: Commencing at a point on the North and South 1/4 line of said Section 20, 944.79 feet N.00°-23'-15"W., along said line from the South 1/4 post of said Section; thence N.89°-58'-00"W., along the North line of the recorded plat of Allen Park "D" 328.79 feet; thence N.00°-22'-00"W., 368.00 feet to the South 1/8th line of said Section 20; thence S.89°-58'-00"E., along said line 328.66 feet to the North and South 1/4 line; thence S.00°-23'-15"E., along said line 368.00 feet to the point of beginning. This plat contains eight Lots numbered consecutively from 123 to 130 inclusive.

### SURVEYOR'S CERTIFICATE

I hereby certify that the plat hereon delineated is a correct one and that permanent metal monuments consisting of bars not less than one-half inch in diameter and 36 inches in length, or shorter bars of not less than one-half inch in diameter lapped over each other at least 6 inches with an over-all length of not less than 36 inches, encased in a concrete cylinder at least 4 inches in diameter and 36 inches in depth have been placed at points marked thus o as thereon shown at all angles in the boundaries of the land platted, at all intersections of streets, and at the intersections of streets with the boundaries of the plat as shown on said plat.

Clifford H. Spicer-Registered Land Surveyor

### CERTIFICATE OF APPROVAL BY THE COUNTY PLAT BOARD

This plat was approved by the County Plat Board of Saginaw County, Michigan, this 30 day of June 1960.  
 Clara P. Turek  
 Clara P. Turek, Register of Deeds-Chairman  
 Benj. G. Wacker  
 Auditor  
 William A. Case  
 Auditor  
 John H. Deibel  
 Auditor  
 H.J. Dietrich, Saginaw County Drain Commissioner