

I hereby certify this copy is a true copy of map or plat forwarded the Register of Deeds for recording.

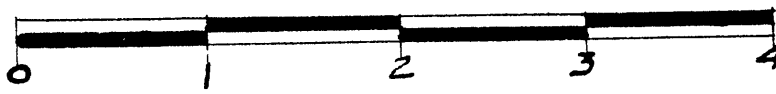
Date July 26, 1957
FILED IN AUDITOR GENERAL'S OFFICE
Date July 31, 1957
EXAMINED AND APPROVED
Date July 26, 1957
Frank P. Turek
Register of Deeds
By D. S. M. [Signature]
Plat Engineer

ARROWWOOD SUBDIVISION

SEC., 20, TOWN 12 NORTH, RANGE 4 EAST

SAGINAW TOWNSHIP, SAGINAW CO., MICHIGAN

COPY
Register's Office
Saginaw County, Mich.
Plat of Arrowwood Subdivision
was Recorded this 29th day of July A.D., 1957 at 9:00 o'clock A.M. in Liber 11 of plates on Page 5
Register of Deeds
ORIGINAL ON FILE



SCALE 1 INCH = 100.0 FEET
ALL DIMENSIONS ARE GIVEN IN FEET AND DECIMALS THEREOF

CARL H. PETERSON REG. C.E.
DEDICATION.

KNOW ALL MEN BY THESE PRESENTS, THAT WE, MARTIN BRAUN AND EDNA M. BRAUN, his wife, as proprietors, have caused the land embraced in the annexed plat, to be surveyed laid out and platted, to be known as ARROWWOOD SUBDIVISION, a part of the northwest quarter of Section 20, T12N-R4E, Saginaw Township, Saginaw County, Michigan, and that all the streets as shown on said plat, are hereby dedicated to the use of the public, excepting any land designated (21) reservation, such lands to be deemed to be automatically dedicated at such time as street extensions adjacent thereto are dedicated in adjoining property. AND NO INGRESS OR EGRESS TO BROCKWAY FROM LOTS 55, 56, 58 AND 59

Signed and Sealed in the presence of,
Serald M. Braun
Gerald M. Braun
Robert F. Braun
Robert F. Braun
Martin Braun
Martin Braun
Edna M. Braun
Edna M. Braun.

ACKNOWLEDGMENT.
STATE OF MICHIGAN SS
SAGINAW COUNTY
On this 17th day of June 1957, before me, a Notary Public in and for said county, personally came the above named MARTIN BRAUN, AND EDNA M. BRAUN, his wife, known to me to be the persons who executed the above dedication and acknowledged the same to be their free act and deed.

My commission expires April 1st, 1961
Robert F. Braun
Notary Public, Saginaw County, Michigan.
Robert F. Braun

DESCRIPTION OF LAND PLATTED.
The land embraced in the annexed plat of the ARROWWOOD SUBDIVISION, a part of the northwest quarter Section 20, T12N-R4E, Saginaw Township, Saginaw County, Michigan, and described as follows: Beginning at a point on the east and west one quarter line of Section 20, 655.75 feet west of the center post of said section; thence north 0 degrees 4 minutes east 1224.45 feet; thence north 89 degrees, 40 minutes west 137 feet; thence north 0 degrees 0 minutes 532.07 feet; thence north 62 degrees 26 minutes west 586.3 feet; thence south 0 degrees 0 minutes 2025.0 feet; thence south 89 degrees 40 minutes east 655.72 feet to point of beginning.
NO OF LOTS 66 1 TO 66 INCLUSIVE

CERTIFICATE OF APPROVAL BY THE CITY PLANNING COMMISSION.
This plat was approved by the City Planning Commission of the City of Saginaw, Michigan at a meeting held JUNE 25 1957.
Russel O. Koenig, Acting
Russel O. Koenig, Planning Director.

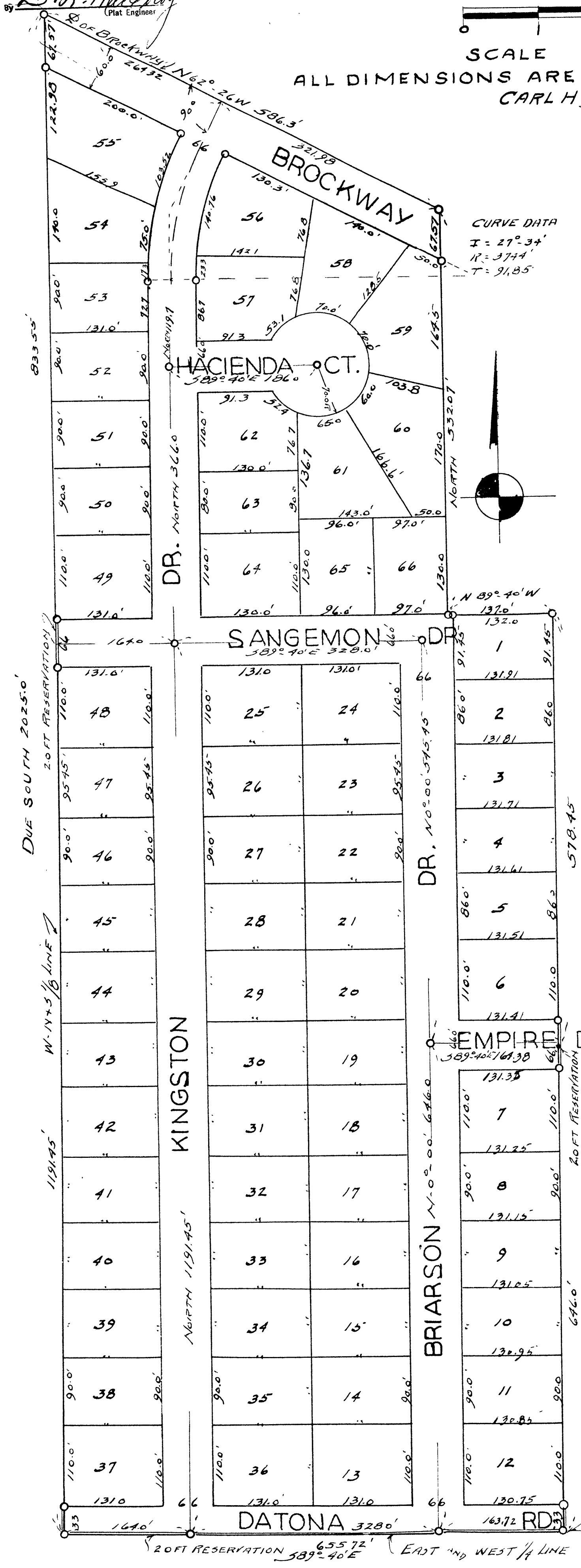
CERTIFICATE OF MUNICIPAL APPROVAL.
This plat was approved by the Township Board of Saginaw Township, Saginaw County Michigan, at a meeting held, 1st June 1957.
Walter Dietzel, Township Clerk.
Walter Dietzel, Township Clerk.

SURVEYOR'S CERTIFICATE.
I hereby certify that the plat hereon delineated, is a correct one, and that permanent metal monuments, consisting of bars not less than one half inch in diameter and 36 inches in length or shorter bars of not less than one half inch in diameter, lap over each other at least 6 inches, with an overall length of not less than 36 inches, encased in a concrete cylinder at least 4 inches in diameter and 36 inches in depth, have been placed at all points marked (O) as thereon shown at all angles in the boundaries of the land platted; and at all intersections of lines of streets and roads, and the line of the streets and roads with the boundary of the plat.
Carl H. Peterson
Carl H. Peterson, Reg. C.E.

COUNTY TREASURER'S CERTIFICATE RELATING TO TAXES.
I hereby certify that there are no tax liens or titles held by the State on the lands described hereon, and that there are no tax liens or titles held by individuals on said land, for the five years preceding the 17th day of July 1957, and that the taxes for said period of five years, are all paid as shown in the records of this office. This certificate does not apply to taxes, if any now in the process of collection by Township, City or Village Collecting Officers.
Carl O. Kittle, County Treasurer.
Carl O. Kittle, County Treasurer.

CERTIFICATE OF APPROVAL BY THE COUNTY PLAT BOARD.
This plat was approved by the County Plat Board of Saginaw County, Michigan, this 24th day of July 1957.
Clara P. Turek, Register of Deeds, Chairman. Peter Girard, Auditor
John H. Deibel, Auditor William A. Case, Auditor.
Clara P. Turek, Register of Deeds, Chairman.
Peter Girard, Auditor
John H. Deibel, Auditor
William A. Case, Auditor.

CERTIFICATE OF APPROVAL BY THE BOARD OF COUNTY ROAD COMMISSIONERS.
This plat has been examined and was approved on the 9th day of July 1957 by the Saginaw County Board of Road Commissioners, Saginaw Michigan. The Board of Road Commissioners assumes no responsibility for the improvements or maintenance of the streets shown on this plat until such time as the following conditions have been met and approved by the Board. All streets are to be graded and drained with the necessary drainage structures installed and a roadway surface which shall consist of crushed stone or natural gravel, conforming to Michigan State Highway Department Specifications 21-A. The surface shall have a minimum width of 18 feet and a compacted thickness of 6 inches. When crushed stone is used, the top 2 inches shall be 21-A with screenings added to provide a dense, wearing surface.
Harold H. Bauer, Member Frank Dudewicz, Member
Harold H. Bauer, Member
Frank Dudewicz, Member.



POINT OF BEGINNING 655.75'
CENTER POST SEC 20