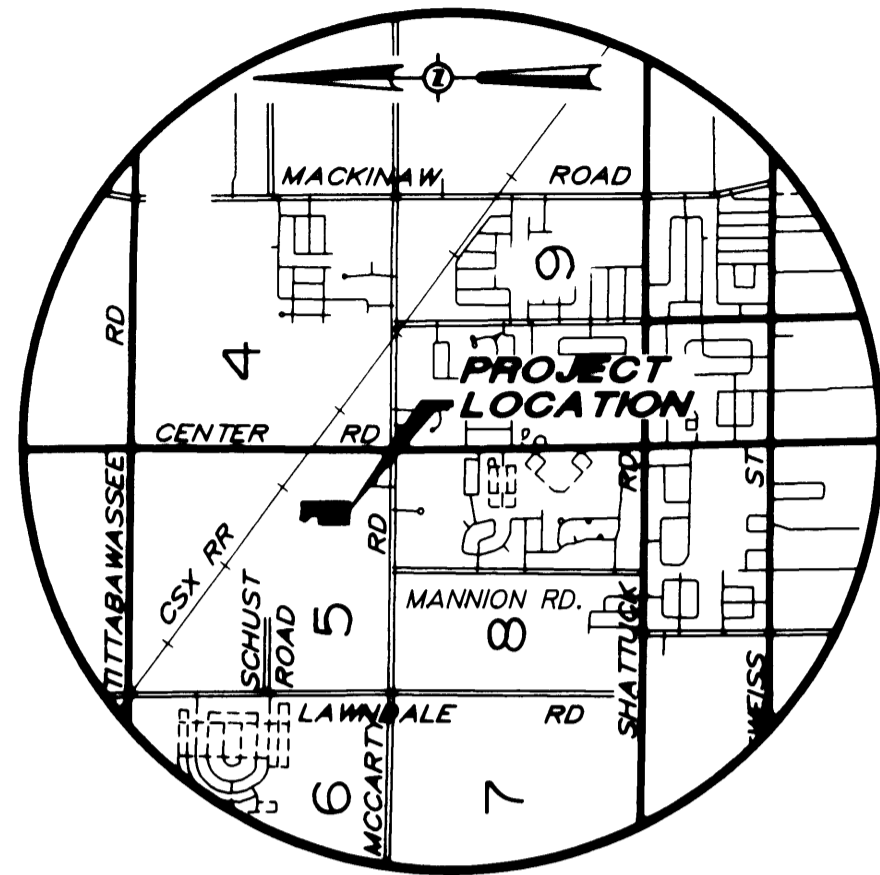
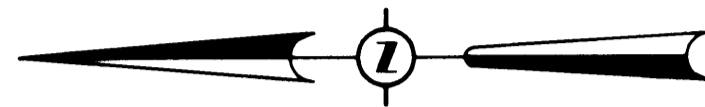


AUTUMN RIDGE No. 2

PART OF THE WEST 1/2 OF THE SE 1/4 OF FRACTIONAL SECTION 5, T12N-R4E
SAGINAW TOWNSHIP, SAGINAW COUNTY, MICHIGAN



LOCATION MAP
NOT TO SCALE



GRAPHIC SCALE



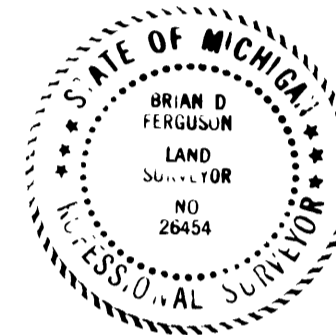
(IN FEET)
1 inch = 60 ft.

CURVE TABLE

CURVE	RADIUS	LENGTH	CHORD	BEARING	DELTA
1	433.00'	54.40'	54.37'	N. 28°16'53"E.	07°11'56"

LEGEND

- ALL DIMENSIONS ARE IN FEET.
- MONUMENTS, CONSISTING OF IRON RODS, ONE HALF INCH IN DIAMETER AND 36 INCHES IN LENGTH WITH CAP No. 26454, ENCASED IN CONCRETE CYLINDERS, 4 INCHES IN DIAMETER AND 36 INCHES IN LENGTH, HAVE BEEN PLACED AT ALL POINTS SHOWN BY SYMBOL "O".
- SET 1/2 INCH IRON ROD, 18 INCHES IN LENGTH WITH CAP No. 26454, AT ALL LOT CORNERS.
- (NR) INDICATES NON-RADIAL LINE
(R) INDICATES RADIAL LINE
- BEARINGS WERE DERIVED FROM "AUTUMN RIDGE" RECORDED IN LIBER 25 OF PLATS, PAGES 12 AND 13, SAGINAW COUNTY RECORDS.
- INDICATES FOUND CONCRETE MONUMENT.
- ALL CURVILINEAR DIMENSIONS ARE ARC LENGTHS.

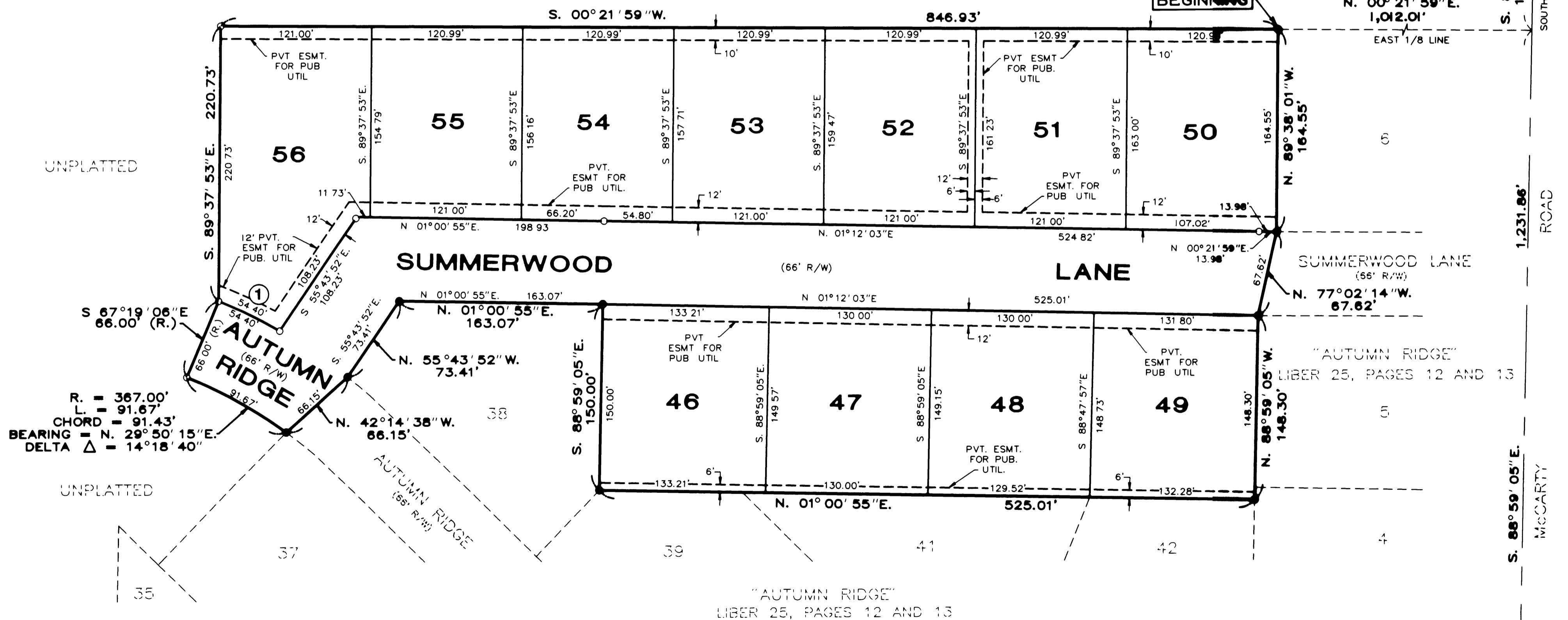


Brian D. Ferguson
Brian D. Ferguson
P.S. No. 26454

SE CORNER
T.12N.-R.4E.
SECTION 5
L.C.R.C. LIBER 2, PAGE 6

UNPLATTED

POINT OF BEGINNING



"AUTUMN RIDGE"
LIBER 25, PAGES 12 AND 13

"AUTUMN RIDGE"
LIBER 25, PAGES 12 AND 13

SOUTH 1/4 COR
T.12N.-R.4E.
SECTION 5
L.C.R.C. LIBER 1, PAGE 49