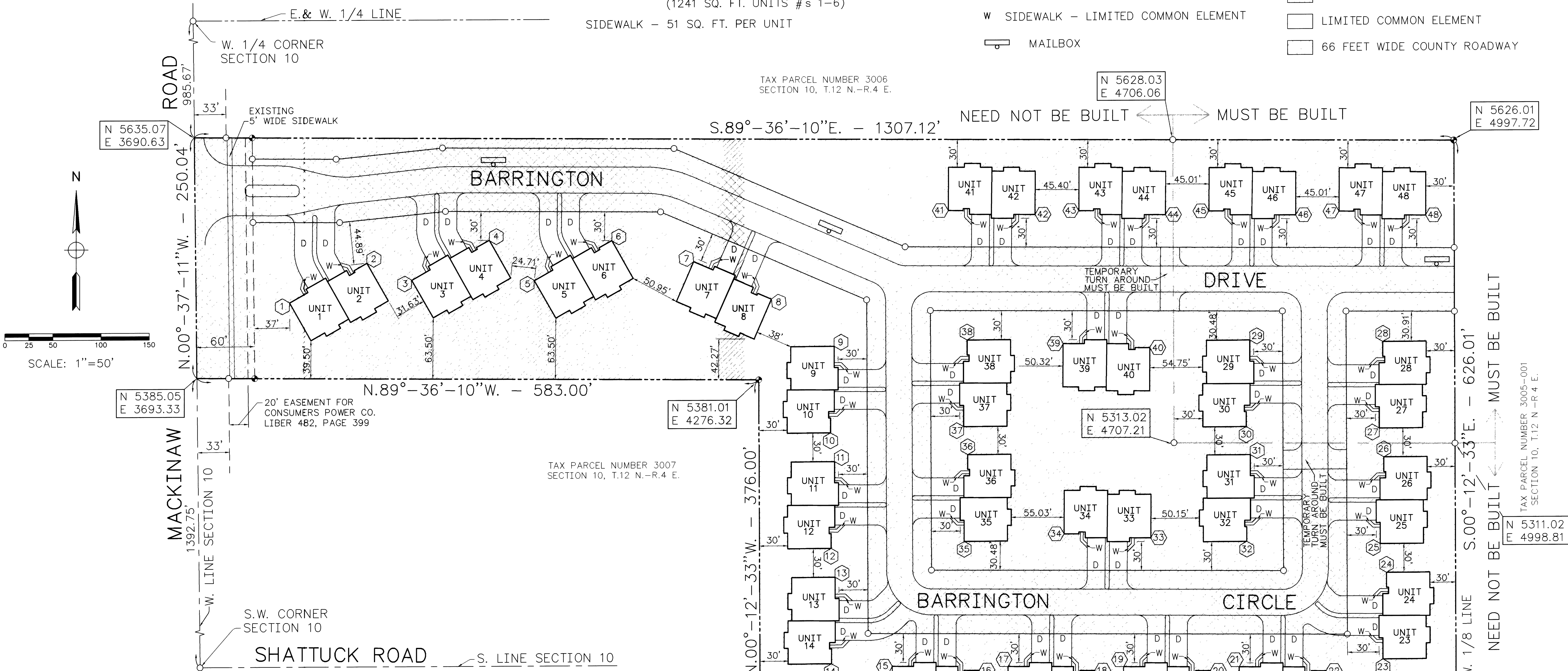


APPROXIMATE AREA

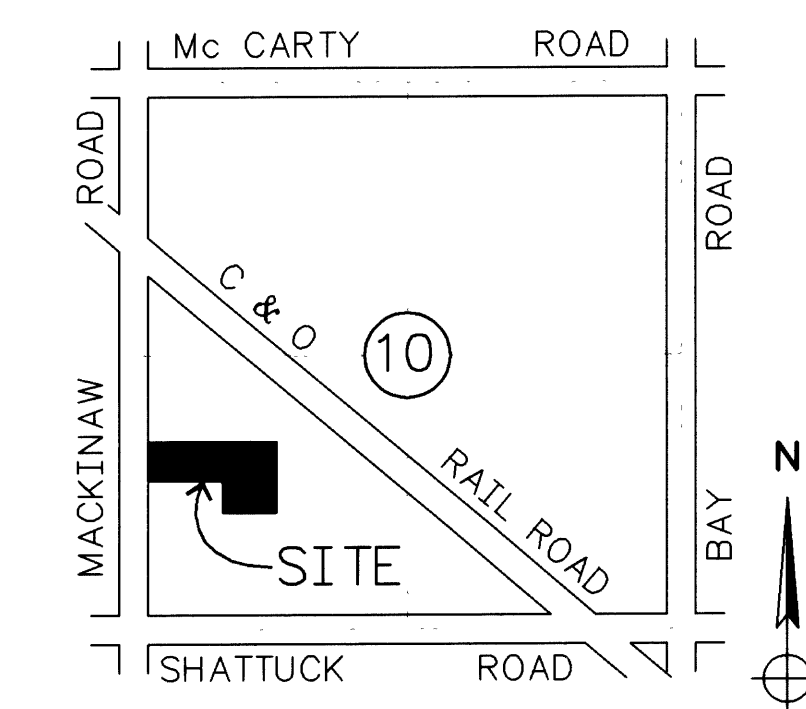
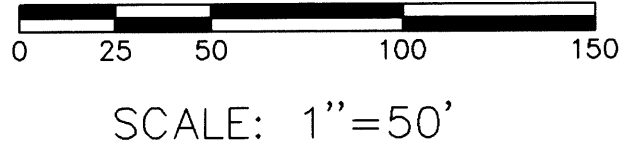
DRIVEWAY - 1011 SQ. FT. PER UNIT
(1241 SQ. FT. UNITS #'s 1-6)
SIDEWALK - 51 SQ. FT. PER UNIT

LEGEND

- ④④ COORDINATE POINT
- D DRIVEWAY - LIMITED COMMON ELEMENT
- W SIDEWALK - LIMITED COMMON ELEMENT
- MAILBOX
- GENERAL COMMON ELEMENT
- LIMITED COMMON ELEMENT
- 66 FEET WIDE COUNTY ROADWAY



DESIGNED BY	WORKORDER NO. 75-95-011
DRAWN BY	CGS ACAD FILE D295203
CHECKED BY	TEL/B PLOTTING SCALE 1"=50'
APPROVED BY	RCP
TABLE REVISIONS	
1	4
2	5
3	6
REVISIONS CAD CORRECTED	
4	

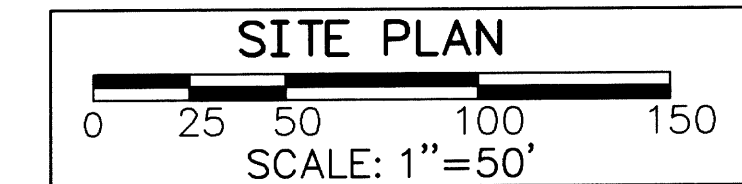


SCHEDULE OF COORDINATE POINTS

COORD. POINT	NORTH/EAST	COORD. POINT	NORTH/EAST	COORD. POINT	NORTH/EAST	COORD. POINT	NORTH/EAST
1	N 5462.85 E 3789.50	13	N 5175.37 E 4355.38	25	N 5207.11 E 4921.07	37	N 5331.02 E 4488.81
2	N 5503.83 E 3869.73	14	N 5085.35 E 4351.71	26	N 5297.12 E 4924.74	38	N 5421.04 E 4492.48
3	N 5485.97 E 3916.25	15	N 5082.34 E 4414.73	27	N 5327.12 E 4920.16	39	N 5416.82 E 4592.13
4	N 5526.95 E 3996.48	16	N 5077.71 E 4504.70	28	N 5417.13 E 4923.83	40	N 5412.20 E 4682.10
5	N 5485.09 E 4043.27	17	N 5081.50 E 4534.73	29	N 5419.48 E 4785.82	41	N 5555.65 E 4473.03
6	N 5526.07 E 4123.50	18	N 5076.88 E 4624.70	30	N 5329.46 E 4782.15	42	N 5551.03 E 4563.00
7	N 5503.95 E 4208.34	19	N 5080.67 E 4654.73	31	N 5300.28 E 4786.26	43	N 5554.71 E 4608.42
8	N 5464.60 E 4289.38	20	N 5076.05 E 4744.70	32	N 5210.26 E 4782.58	44	N 5550.09 E 4698.39
9	N 5415.39 E 4354.50	21	N 5079.84 E 4774.73	33	N 5214.48 E 4682.94	45	N 5553.78 E 4743.43
10	N 5325.37 E 4350.83	22	N 5075.21 E 4864.70	34	N 5219.10 E 4592.97	46	N 5549.15 E 4833.40
11	N 5295.38 E 4354.94	23	N 5087.11 E 4923.85	35	N 5211.82 E 4489.25	47	N 5552.84 E 4878.43
12	N 5205.36 E 4351.27	24	N 5177.12 E 4927.52	36	N 5301.84 E 4492.92	48	N 5548.22 E 4968.40

8-3-95
DATE

Ronald C. Prevost
RONALD C. PREVOST
REGISTERED LAND SURVEYOR
REGISTRATION NO. 24612
SPICER ENGINEERING COMPANY
1258 S. WASHINGTON AVENUE
SAGINAW, MICHIGAN 48602



PREPARED BY:
RONALD C. PREVOST
PROFESSIONAL SURVEYOR

SPICER ENGINEERING COMPANY
1258 S. WASHINGTON AVENUE
SAGINAW, MICHIGAN 48601
PHONE: (517) 754-4717

BARRINGTON CLUB
CONDOMINIUMS

JULY, 1995