

CURVE DATA

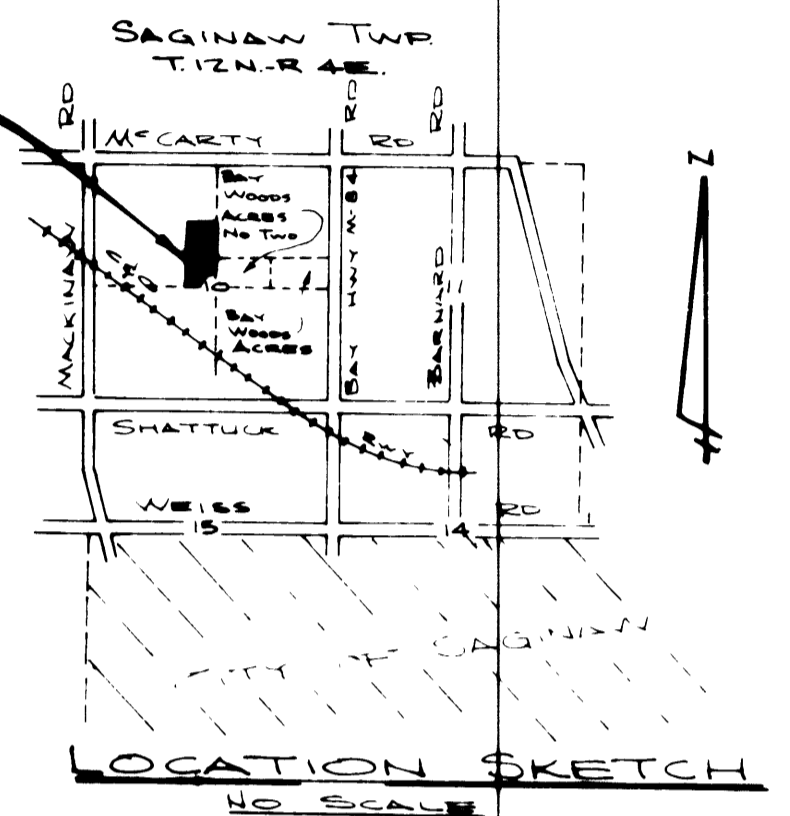
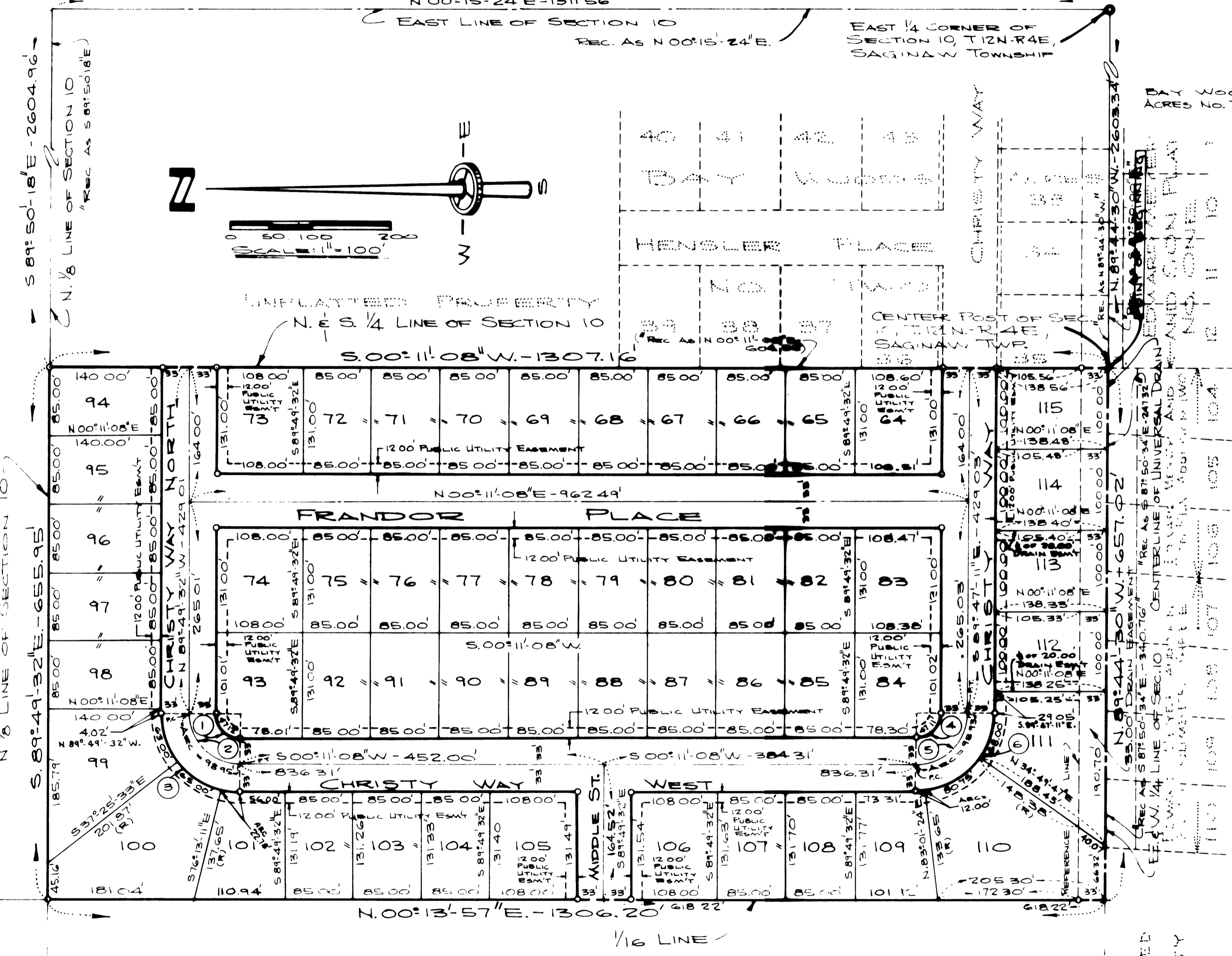
No.	DELTA ANGLE	RADIUS	ARC	CHORD	CHORD BEARING	TANGENT
1	89°59'-20"	30'	47.12'	42.42'	S 45°10'-48" W.	29.99'
2	89°59'-20"	63'	98.95'	89.09'	S 45°10'-48" W.	62.99'
3	89°59'-20"	96'	150.78'	135.75'	S 45°10'-48" W.	95.98'
4	89°58'-19"	30'	47.11'	42.42'	N 44°48'-01" W.	29.98'
5	89°58'-19"	63'	98.93'	89.07'	N 44°48'-01" W.	62.97'
6	89°58'-19"	96'	150.75'	135.73'	N 44°48'-01" W.	95.95'

BAY WOODS ACRES No. THREE

PART OF THE N.W. 1/4, SEC. 10, T.12N.-R.4E.
SAGINAW TOWNSHIP, SAGINAW COUNTY, MICHIGAN

SPICER ENGINEERING COMPANY
SAGINAW, MICHIGAN
1973

BAY HWY M-84 ROAD
N 00°15'-24"E-1311.56'



- LEGEND**
- 1- ALL DIMENSIONS ARE GIVEN IN FEET
 - 2- ALL CURVILINEAR MEASUREMENTS ARE ARC DISTANCES
 - 3- CONCRETE MONUMENTS HAVE BEEN PLACED AT ALL POINTS MARKED "O"
 - 4- SET SOLID IRON BARS 1/2" IN DIA. BY 18" IN LENGTH AT ALL LOT CORNERS
 - 5- BEARINGS WERE ESTABLISHED FROM THE RECORDED PLAT OF "BAY WOODS ACRES No. TWO", LIBER 18, PAGE 29-30.
 - 6- (2) - INDICATES CURVE NUMBER (SEE CURVE DATA TABLE HEREON)
 - 7- RECORDED BEARINGS OF ADJOINING PLATS ARE SHOWN ON PLAN
 - 8- (R) INDICATES A RADIAL LINE

UNPLATTED PROPERTY