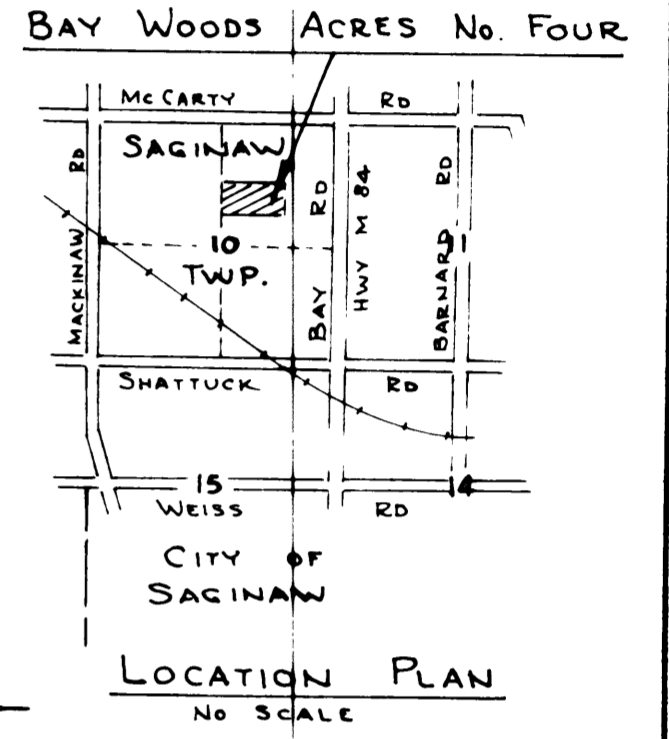
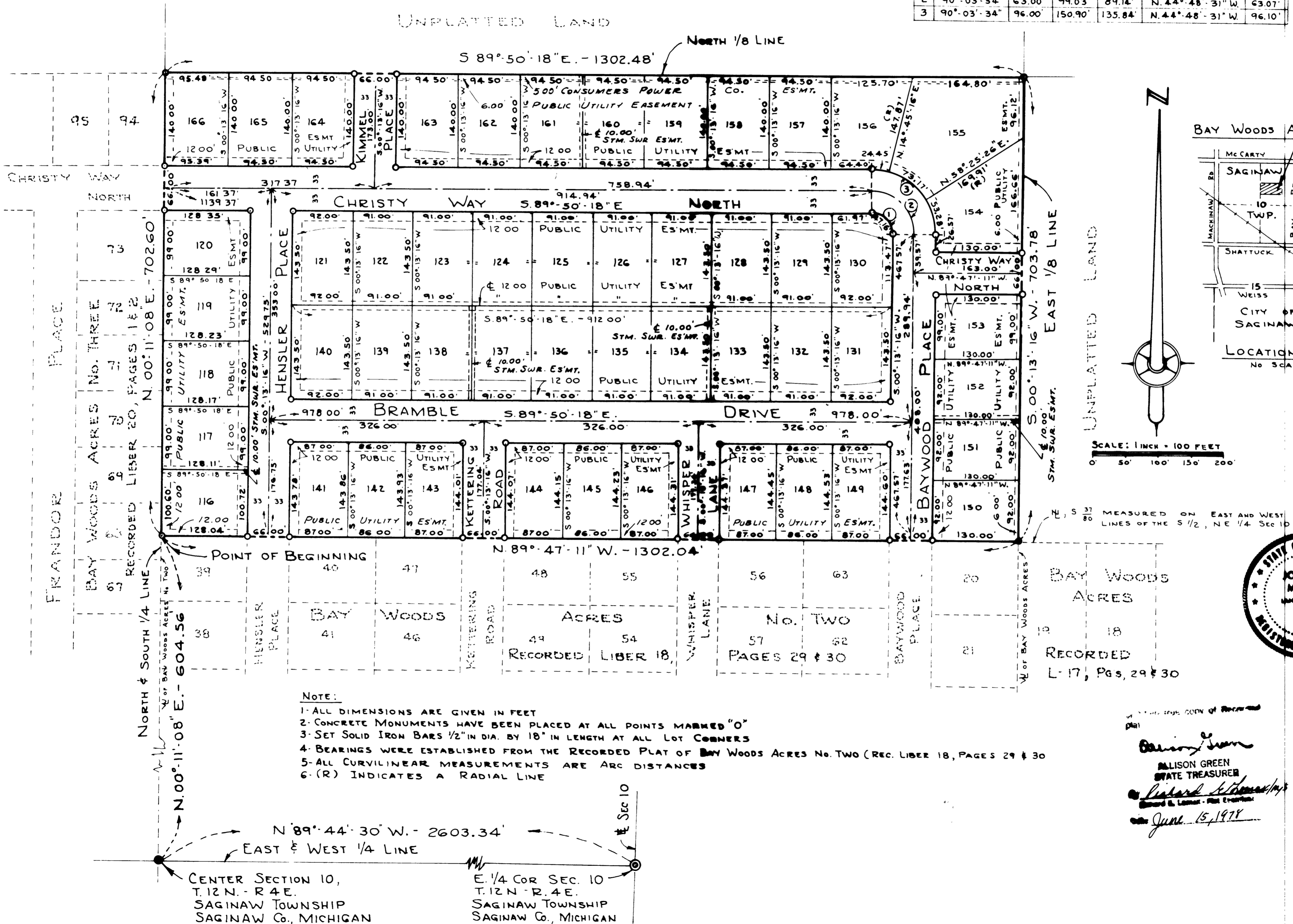


# BAY WOODS ACRES No. FOUR

PART OF THE NORTHEAST 1/4 OF SECTION 10, T.12N. - R.4E.  
SAGINAW TOWNSHIP, SAGINAW COUNTY, MICHIGAN

CURVE DATA

No	DELTA ANGLE	RADIUS	ARC	CHORD	CHORD BEARING	TAN.
1	90° 03' 34"	30.00'	47.16'	42.45'	N. 44° 48' 31" W.	30.03'
2	90° 03' 34"	63.00'	99.03'	89.14'	N. 44° 48' 31" W.	63.07'
3	90° 03' 34"	96.00'	150.90'	135.84'	N. 44° 48' 31" W.	96.10'



SCALE: 1 INCH = 100 FEET  
0 50' 100' 150' 200'



- NOTE:
- 1- ALL DIMENSIONS ARE GIVEN IN FEET
  - 2- CONCRETE MONUMENTS HAVE BEEN PLACED AT ALL POINTS MARKED "O"
  - 3- SET SOLID IRON BARS 1/2" IN DIA. BY 18" IN LENGTH AT ALL LOT CORNERS
  - 4- BEARINGS WERE ESTABLISHED FROM THE RECORDED PLAT OF BAY WOODS ACRES No. TWO (REC. LIBER 18, PAGES 29 & 30)
  - 5- ALL CURVILINEAR MEASUREMENTS ARE ARC DISTANCES
  - 6- (R) INDICATES A RADIAL LINE

RECORDED COPY of Record Plat  
 Alison Green  
 ALISON GREEN  
 STATE TREASURER  
 June 15, 1978

CENTER SECTION 10,  
T.12N. - R.4E.  
SAGINAW TOWNSHIP  
SAGINAW Co., MICHIGAN

E. 1/4 COR SEC. 10  
T.12N. - R.4E.  
SAGINAW TOWNSHIP  
SAGINAW Co., MICHIGAN