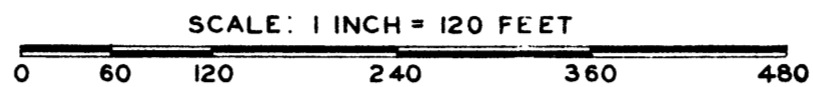


DM
11-5-47

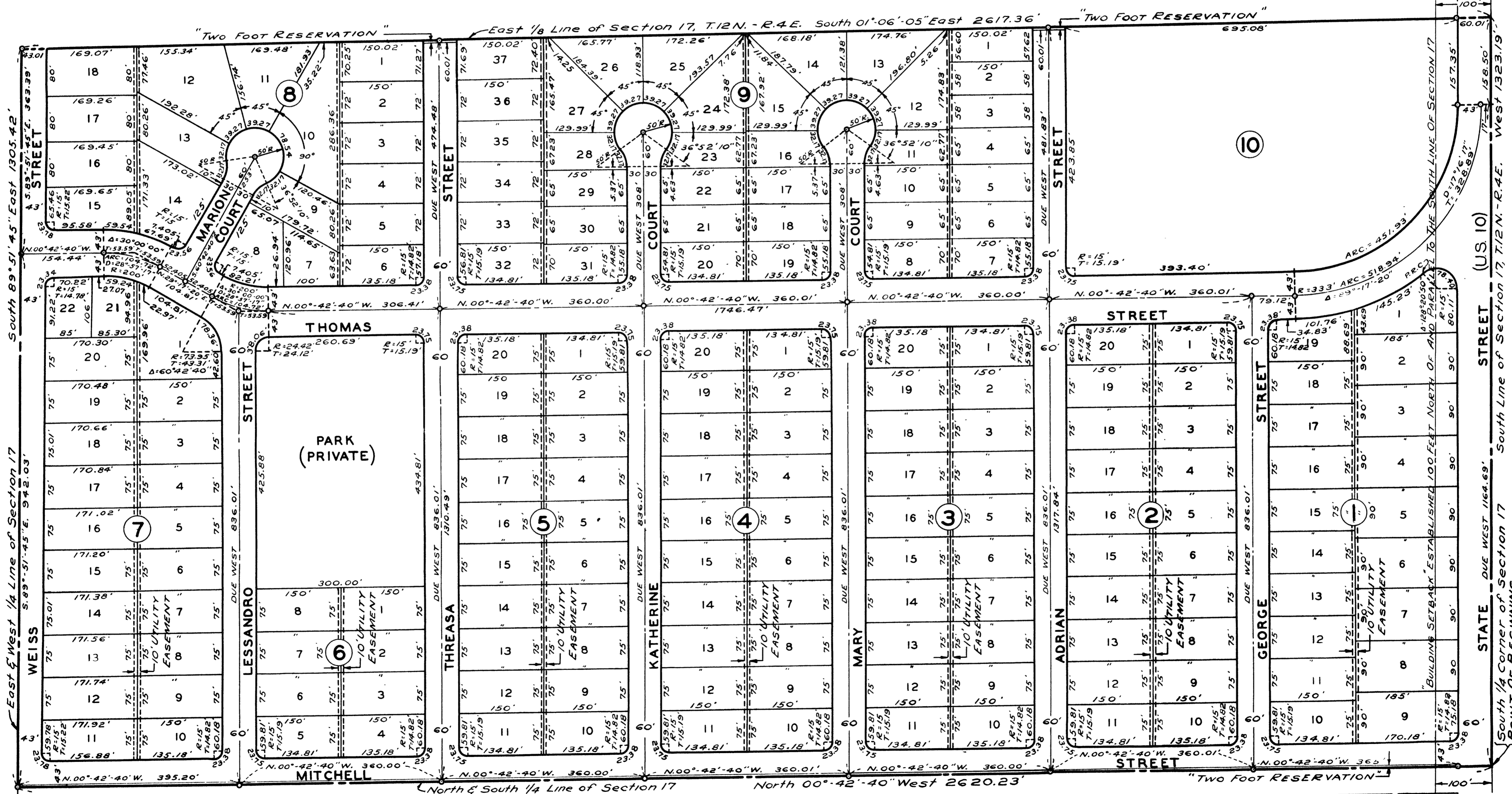
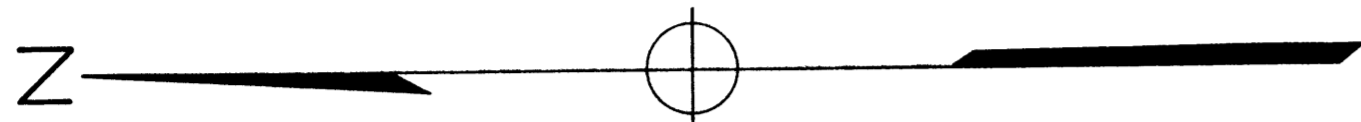
BERBEROVICH SUBDIVISION

SECTION 17 - TOWNSHIP 12 NORTH - RANGE 4 EAST
SAGINAW TOWNSHIP - SAGINAW COUNTY - MICHIGAN



ALL DIMENSIONS ARE GIVEN IN FEET AND DECIMALS THEREOF

THE SPICER ENGINEERING COMPANY
SAGINAW, MICHIGAN
1947



STATE DUE WEST 1164.69' South Line of Section 17, T.12N.-R.4E. West 1323.79' POINT OF BEGINNING

STATE DUE WEST 836.01' South Line of Section 17, T.12N.-R.4E. West 1164.69' POINT OF BEGINNING

STATE DUE WEST 836.01' South Line of Section 17, T.12N.-R.4E. West 1164.69' POINT OF BEGINNING