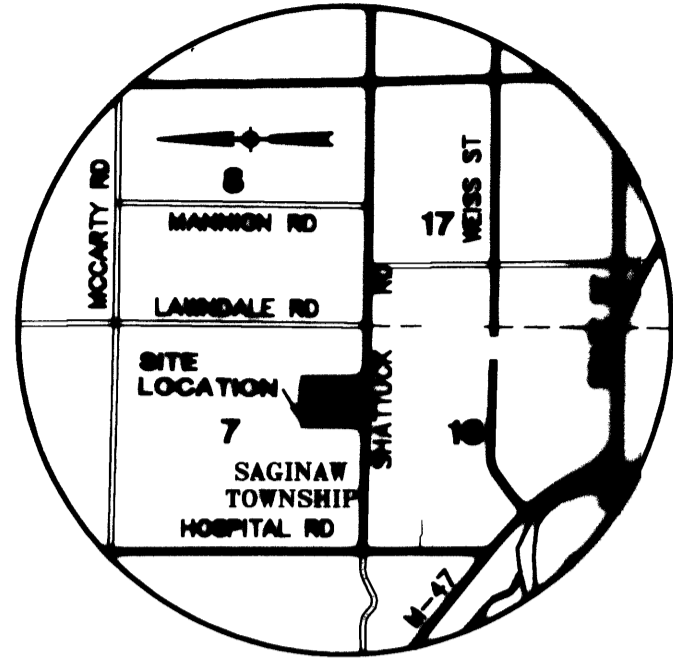


# BOWDEN FARMS NORTH

PART OF THE SE 1/4 OF SECTION 7, T12N-R4E  
SAGINAW TOWNSHIP, SAGINAW COUNTY, MICHIGAN



**LOCATION MAP**  
NOT TO SCALE

**LEGEND**

ALL DIMENSIONS ARE IN FEET.

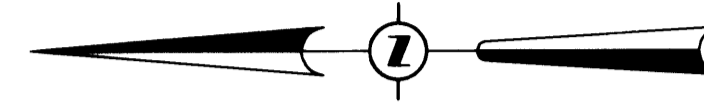
MONUMENTS, CONSISTING OF STEEL RODS, ONE HALF INCH IN DIAMETER AND 36 INCHES IN LENGTH WITH CAP NO. 26454, ENCASED IN CONCRETE CYLINDERS, 4 INCHES IN DIAMETER AND 36 INCHES IN LENGTH, HAVE BEEN PLACED AT ALL POINTS SHOWN BY SYMBOL "o".

SET 1/2 INCH STEEL ROD, 18 INCHES IN LENGTH WITH CAP NO. 26454, AT ALL LOT CORNERS.

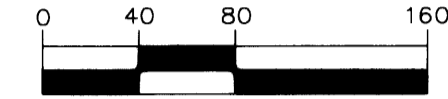
ALL CURVILINEAR DIMENSIONS ARE ARC LENGTHS.

(NR) INDICATES NON-RADIAL LINE.

BEARINGS AS SHOWN ARE REFERENCED TO THE RECORDED PLAT OF BOWDEN FARMS AS RECORDED IN LIBER 29 OF PLATS, PAGE 1.

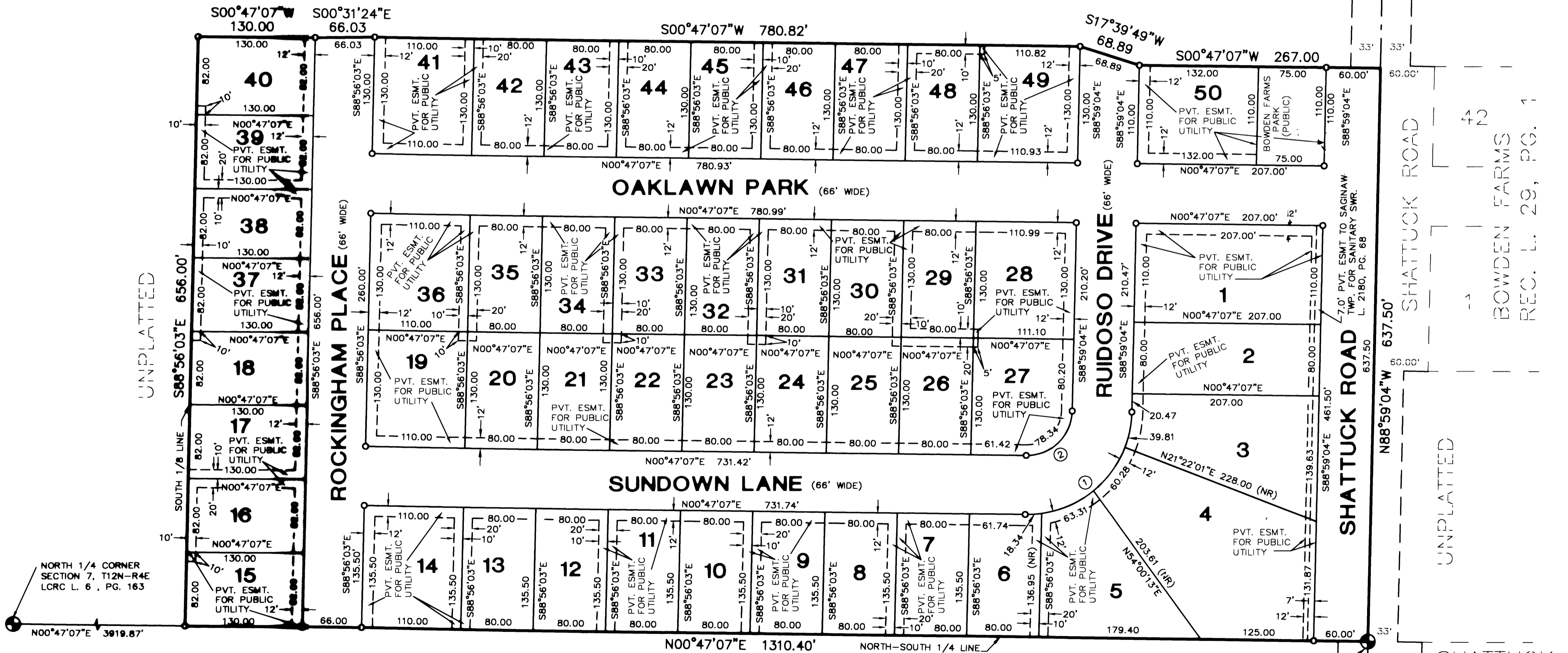


**GRAPHIC SCALE**



( IN FEET )  
1 INCH = 80 ft.

UNPLATTED



**CURVE TABLE**

NO.	RADIUS	ARC	CHD.	CHD. BRG.	DELTA ANGLE
1	116.00	181.74	163.72	89°46'10"	S44°05'59"E
2	50.00	78.34	70.57	89°46'10"	S44°05'59"E

NOTE: THERE SHALL BE NO DIRECT VEHICULAR ACCESS TO SHATTUCK ROAD FROM LOTS 1, 2, 3 AND 4.

*Brian D. Ferguson*  
BRIAN D. FERGUSON, #26454

SHATTUCK FARMS  
REC. L. 27  
PG. 50