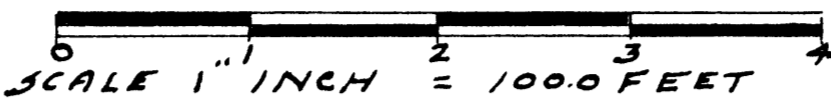


# BROCKWAY CENTER FIRST ADD.

## SEC., 21, TOWN 12 NORTH RANGE 4 EAST.

### SAGINAW TOWNSHIP, SAGINAW CO., MICHIGAN.



ALL DIMENSIONS ARE GIVEN IN FEET AND DECIMALS THEREOF,  
CARL H. PETERSON REG. C.E.

**DEDICATION.**

Know all men by these presents, that we, ARTHUR KLUCK and CLARA KLUCK, his wife, as proprietors, have caused the land embraced in the annexed plat to be surveyed laid out and platted, to be known as the BROCKWAY CENTER FIRST ADDITION, a part of the southwest quarter section 21, T12N-R4E, Saginaw Township, Saginaw County Michigan, and that all the streets, as shown on said plat, are hereby dedicated to the use of the public. However, excepting from this dedication, any land designated (2 ft. reservations) such land to be deemed to be dedicated automatically at such time as streets, extensions adjacent thereto, are dedicated in the adjoining property.

SIGNED AND SEALED IN THE PRESENCE OF

Robert W. Duckos  
ROBERT W. DUCKOS  
Martin Braun  
MARTIN BRAUN

Arthur Kluck  
ARTHUR KLUCK  
Clara Kluck  
CLARA KLUCK

**ACKNOWLEDGMENT**

STATE OF MICHIGAN SS.  
COUNTY OF SAGINAW

On this 9<sup>th</sup> day of April 1957 before me, a Notary Public in and for said county, personally came the above named ARTHUR KLUCK and CLARA KLUCK, his wife, known to me to be the persons who executed the above dedication, and acknowledged to be their free act and deed, the execution of the above dedication.

My commission expires 6-29-1957

Robert W. Duckos  
Notary Public, Saginaw County, Michigan.  
ROBERT W. DUCKOS

**DESCRIPTION OF LAND.**

The land embraced in the annexed plat of BROCKWAY CENTER FIRST ADDITION, a subdivision of part of the southwest quarter of Section 21, T12N-R4E, Saginaw Township, Saginaw County Michigan, and described as follows: Beginning at a point on the south line of Section 21, T12N-R4E, 499.0 feet west of the south one quarter post; thence due west on said south line 445.6 feet; thence north 0 degrees, 24 minutes west, 837.0 feet; thence north 14 degrees, 33 minutes west, 131.6 feet; thence north 0 degrees 24 minutes west, 424.0 feet; thence south 63 degrees, 29 minutes east 636.0 feet; thence south 26 degrees, 29 minutes west 336.0 feet; thence south 16 degrees, 31 minutes east 122.25 feet; thence south 0 degrees, 41 minutes east, 310.0 feet; thence south 21 degrees 26 minutes east, 70.63 feet; thence south 0 degrees 41 minutes east, 313.0 feet to point of beginning.

NO. LOTS 26 - 28 TO 53 INCLUSIVE

**SURVEYOR'S CERTIFICATE.**

I hereby certify that the plat hereon delineated, is a correct one, and that permanent metal monuments consisting of bars not less than one half inch in diameter and 36 inches in length, or shorter bars of not less than one half inch in diameter lapped over each other at least 6 inches, with an overall length of not less than 36 inches, encased in a concrete cylinder, at least 4 inches in diameter and 36 inches in depth, have been placed at points marked (G) as thereon shown at all angles in the boundaries of the land platted, and that all the intersections of streets, and at all intersections of streets with the boundaries of the plat as shown on said plat.

**CERTIFICATE OF APPROVAL OF THE CITY PLANNING COMMISSION.**

This plat was approved by the City Planning Commission of the City of Saginaw, Michigan, at a meeting held March 26 1957.

Russel O. Koenig  
Russel O. Koenig, Planning Director.

**CERTIFICATE OF MUNICIPAL APPROVAL.**

This plat was approved by the Township Board of Saginaw Township, Saginaw County Michigan, at a meeting held May 6 1957.

Walter Dietzel  
Walter Dietzel, Township Clerk.

**CERTIFICATE OF APPROVAL BY THE BOARD OF COUNTY ROAD COMMISSIONERS.**

This plat has been examined and was approved on the 7<sup>th</sup> day of May 1957 by the Saginaw County Board of Road Commissioners, Saginaw Michigan. The Board of Road Commissioners assumes no responsibility for the improvements or maintenance of the streets shown on this plat until such time as the following conditions have been met and approved by the Board. All streets are to be graded and drained with the necessary drainage structures installed and a roadway surface which shall consist of crushed stone or natural gravel, conforming to Michigan State Highway Department Specifications 21-A. The surface shall have a minimum width of 18 feet and a compacted thickness of 6 inches. When crushed stone is used, the top 2 inches shall be 21-A with screenings added to provide a dense, wearing surface.

William M. Trim  
William M. Trim, Chairman.

Harold H. Bauer  
Harold H. Bauer, Member

Frank Dudewicz  
Frank Dudewicz Member.

**COUNTY TREASURER'S CERTIFICATE RELATING TO TAXES.**

I hereby certify that there are no tax liens or titles held by the State on the lands described hereon, and that there are no tax liens or titles held by individuals on said land, for the five years preceding the 14<sup>th</sup> day of May 1957, and that the taxes for said period of five years, are all paid, as shown by the records of this office. This certificate does not apply to taxes, if any, now in the process of collection by Township, City or Village Collecting Officers.

Carl O. Little  
Carl O. Little, County Treasurer.

**CERTIFICATE OF APPROVAL BY THE COUNTY PLAT BOARD.**

This plat was approved by the County Plat Board of Saginaw County, Michigan, this 13<sup>th</sup> day of June 1957.

Clara P. Turck  
Clara P. Turck, Register of Deeds, Chairman

Peter Girard  
Peter Girard, Auditor

John H. Deibel  
John H. Deibel, Auditor

William A. Case  
William A. Case, Auditor.

I hereby certify this copy is a true copy of map or plat forwarded the Register of deeds for recording.

Date June 18, 1957

FILED IN AUDITOR GENERAL'S DEPT.

Date July 1, 1957

EXAMINED AND APPROVED

Date June 18, 1957

Frank Segers  
Auditor General

By D. L. MacChesney

**COPY**

Register's Office

Saginaw County

Plat of Brockway

Center First Add.

was Recorded this 20 day of

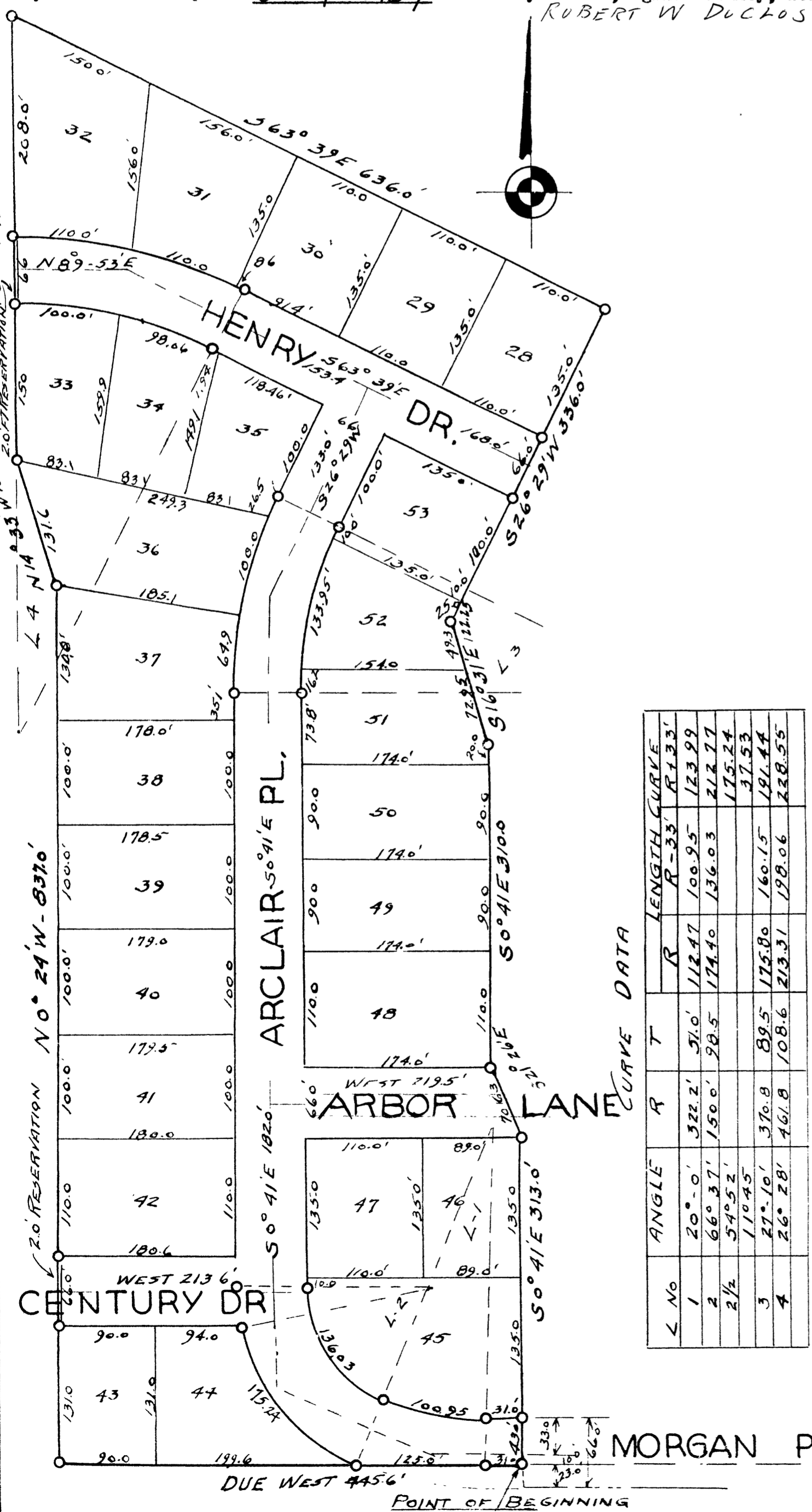
June A.D., 1957 at 10 o'clock

A.M., in Liber. 11 of Plats

on Page 2

Clara P. Turck  
Register of Deeds

ORIGINAL ON FILE



499.0'  
SOUTH 1/4 Post SEC 21 T12N-R4E