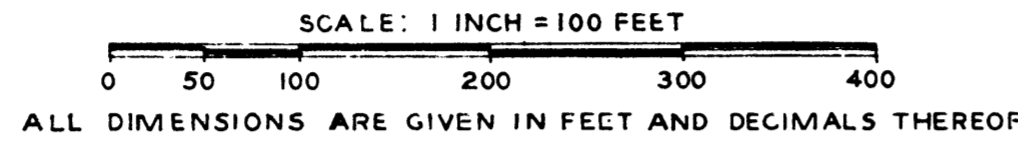


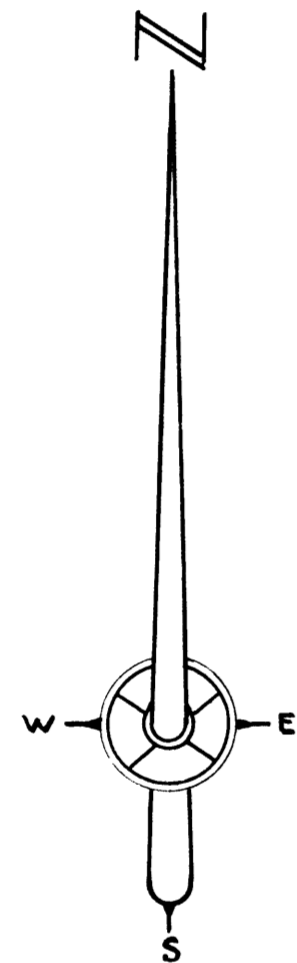
BROCKWAY CENTER SECOND ADDITION

SECTION 21, TOWNSHIP 12 NORTH-RANGE 4 EAST

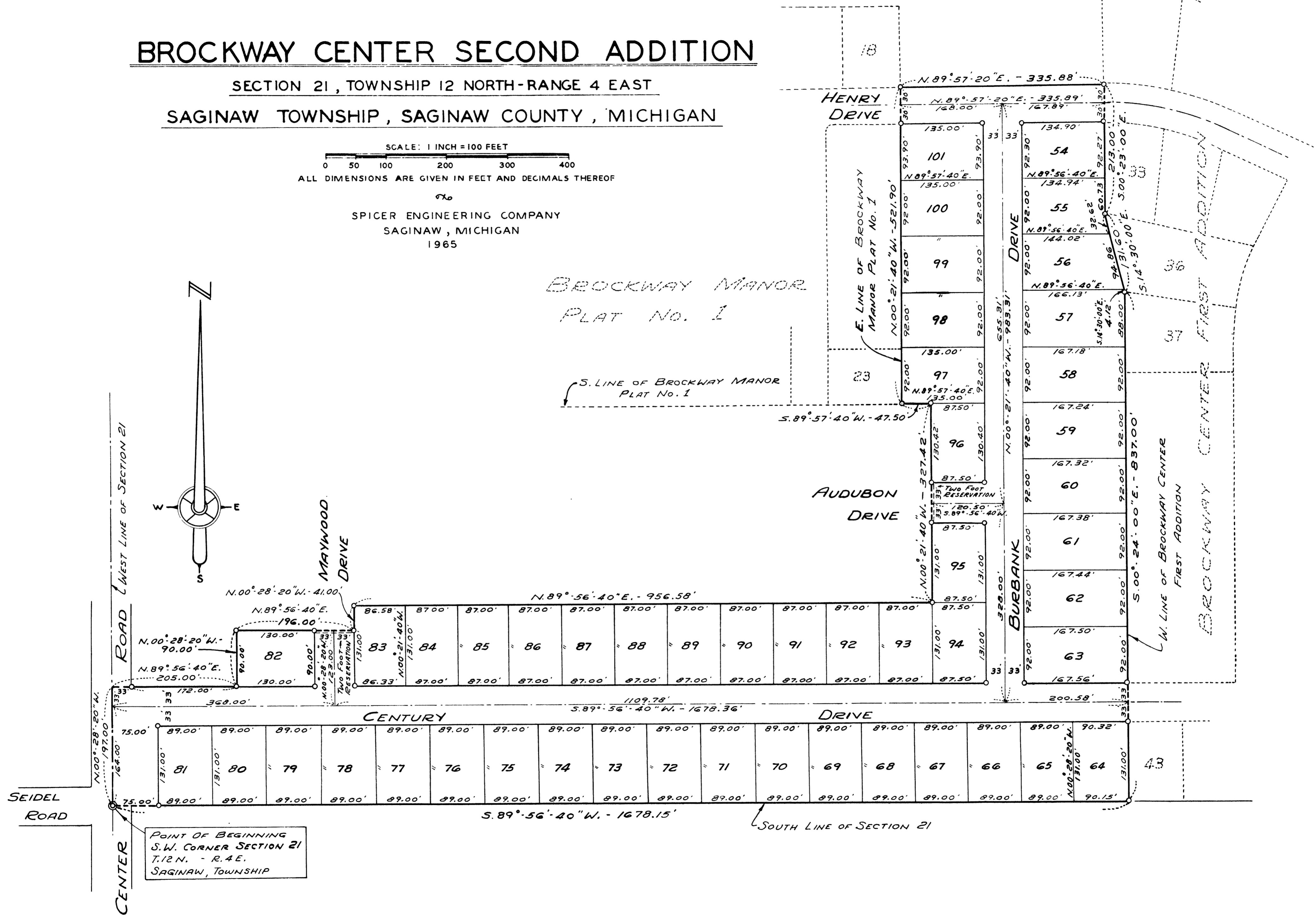
SAGINAW TOWNSHIP, SAGINAW COUNTY, MICHIGAN



SPICER ENGINEERING COMPANY
SAGINAW, MICHIGAN
1965



*BROCKWAY MANOR
PLAT No. 1*



POINT OF BEGINNING
S.W. CORNER SECTION 21
T. 12 N. - R. 4 E.
SAGINAW, TOWNSHIP

SOUTH LINE OF SECTION 21