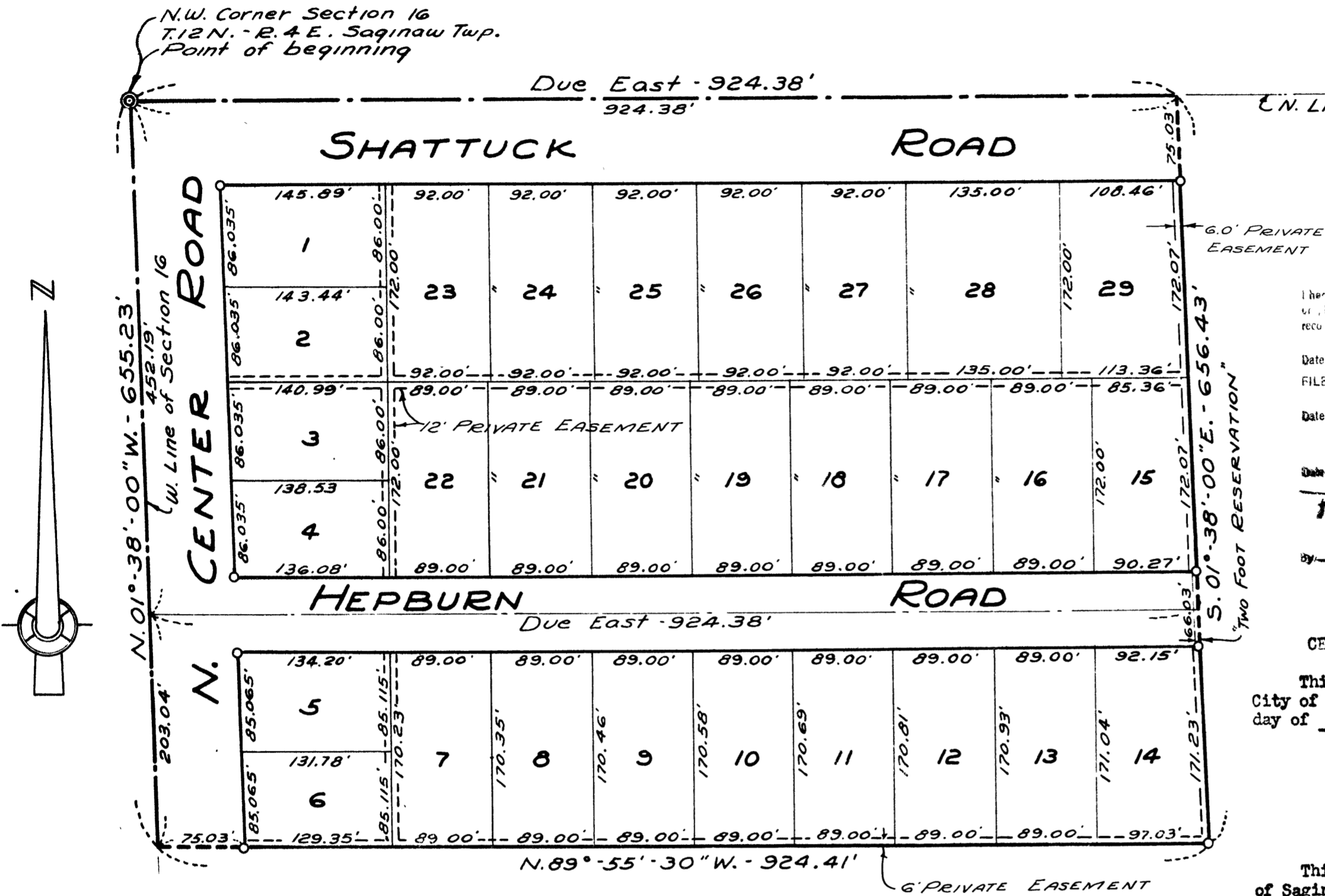


BROOKMONT PARK

A PART OF N.W. 1/4 OF N.W. 1/4 SECTION 16, T.12N.-R.4 E.
SAGINAW TOWNSHIP - SAGINAW COUNTY - MICHIGAN

SCALE: 1 INCH = 100 FEET
0 50 100 200 300 400
ALL DIMENSIONS ARE GIVEN IN FEET AND DECIMALS THEREOF
THE SPICER ENGINEERING COMPANY
SAGINAW, MICHIGAN
1957



DESCRIPTION

The land embraced in the annexed plat of BROOKMONT PARK, A Part Of N.W. 1/4 Of N.W. 1/4, Section 16, T.12 N.-R.4 E., Saginaw Township, Saginaw County, Michigan, is described as follows: Commencing at the Northwest corner of said Section 16, thence Due East along the North line of said Section 924.38 feet; thence S.01°-38'-00"E., 656.43 feet; thence N.89°-55'-30"W., 924.41 feet to the West line of said Section 16; thence N.01°-38'-00"W., along the West Section line, 655.23 feet to the point of beginning. This plat contains 29 lots numbered consecutively from 1 to 29 inclusive.

SURVEYOR'S CERTIFICATE

I hereby certify that the plat hereon delineated is a correct one and that permanent metal monuments consisting of bars not less than one-half inch in diameter and 36 inches in length, or shorter bars of not less than one-half inch in diameter lapped over each other at least 6 inches with an over-all length of not less than 36 inches, encased in a concrete cylinder at least 4 inches in diameter and 36 inches in depth have been placed at points marked thus \circ as thereon shown at all angles in the boundaries of the land platted, at all intersections of streets, and at the intersections of streets with the boundaries of the plat as shown on said plat.

Clifford H. Spicer
Clifford H. Spicer - Registered Land Surveyor

DEDICATION

KNOW ALL MEN BY THESE PRESENTS, That we, Earl R. Shepherd and Arlene A. Shepherd, his wife; Duane DePlonty, a single man; William E. Sherman and Gloria L. Sherman, his wife, as proprietors, have caused the land embraced in the annexed plat to be surveyed, laid out and platted to be known as BROOKMONT PARK, A Part Of N.W. 1/4 Of N.W. 1/4, Section 16, T.12 N.-R.4 E., Saginaw Township, Saginaw County, Michigan, and that the Roads as shown on said plat are hereby dedicated to the use of the public, Excepting however, from this dedication land designated "Two Foot Reservation," such land to be dedicated automatically for street purposes at such time as street extensions adjacent thereto are dedicated in adjoining property.

Earl R. Shepherd (L.S.)
Earl R. Shepherd
Arlene A. Shepherd (L.S.)
Arlene A. Shepherd
Duane DePlonty (L.S.)
Duane DePlonty
William E. Sherman (L.S.)
William E. Sherman
Gloria L. Sherman (L.S.)
Gloria L. Sherman

Signed and Sealed in the Presence of
Estelle M. Bryan
Estelle M. Bryan
G.H. Spicer
G.H. Spicer

ACKNOWLEDGMENT

STATE OF MICHIGAN) ss.
County of Saginaw)
On this 26th day of April, 1957, before me, a Notary Public in and for said County, appeared Earl R. Shepherd and Arlene A. Shepherd, his wife; Duane DePlonty, a single man; William E. Sherman and Gloria L. Sherman, his wife, known to me to be the persons who executed the above dedication and acknowledged the same to be their free act and deed.

My Commission Expires May 16, 1958
Estelle M. Bryan
Notary Public, Saginaw County, Michigan

I hereby certify this copy is a true copy of map as filed in the office of the Register of Deeds for Saginaw County, Michigan.
Date June 18, 1957
FILED IN 1957
Date July 2, 1957
EXAMINED AND APPROVED
Date June 18, 1957
Frank Stojewski
Auditor General
by D.L. MacGregor
Plat Engineer

COPY
Register's Office
Saginaw County, Mich.
Plat of Brookmont Park
Was recorded this 19 day of June, A.D., 1957 at 2:50 o'clock 4 P.M., in Liber 11 of 91475 at Page 1
Clara B. Turek
Register of Deeds

CERTIFICATE OF APPROVAL BY CITY PLANNING COMMISSION

This plat was approved by the City Planning Commission of the City of Saginaw, Michigan, at a meeting held on the 26th day of March, 1957.
Russel O. Koendig Director

CERTIFICATE OF MUNICIPAL APPROVAL

This plat was approved by the Township Board of the Township of Saginaw at a meeting held on the 19 day of June, 1957.
Walter Dietzel Township Clerk

CERTIFICATE OF APPROVAL BY BOARD OF COUNTY ROAD COMMISSIONERS

This plat has been examined and was approved on the 17th day of May, 1957 by the Saginaw County Board of Road Commissioners.

The Board of County Road Commissioners of Saginaw County, Michigan, assume no responsibility for the improvement or maintenance of the Roads or Streets shown on this Plat until such time as the following conditions have been met and approved by this Board.

All Roads and Streets are to be graded and drained with necessary drainage structures installed and a roadway surface, which shall consist of crushed stone or natural gravel conforming to Michigan State Highway Department Specifications 21A. The surface shall have a minimum width of 18 feet and a compacted thickness of 6 inches. When crushed stone is used the top 2 inches shall be 21A with screenings added to provide a dense wearing course.

William M. Trim Chairman
Frank Dudewicz Member
Harold H. Bauer Member

COUNTY TREASURER'S CERTIFICATE RELATING TO TAXES
(Sec. 135, Act 206, 1893 as amended - Sec. 1134, C. L. 1915.)
Office of County Treasurer, Saginaw County

I hereby certify, that there are no tax liens or titles held by the State on the land described hereon, and that there are no tax liens or titles held by individuals on said lands, for the five years preceding the 15th day of May, 1957, and that the taxes for said period of five years are all paid, as shown by the records of this office.

This certificate does not apply taxes, if any, now in process of collection by township, city or village collecting officers.
Carl O. Little County Treasurer

CERTIFICATE OF APPROVAL BY THE COUNTY PLAT BOARD

This plat was approved by the County Plat Board of Saginaw County, Michigan, this 19th day of June, 1957.

Clara B. Turek Registrar of Deeds - Chairman
Peter Girard Auditor
William A. Case Auditor
John H. Deibel Auditor