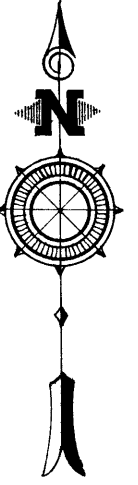


CENTER WOODS

SECTION TWENTY-EIGHT - TOWNSHIP TWELVE NORTH - RANGE FOUR EAST
SAGINAW TOWNSHIP - SAGINAW COUNTY - MICHIGAN

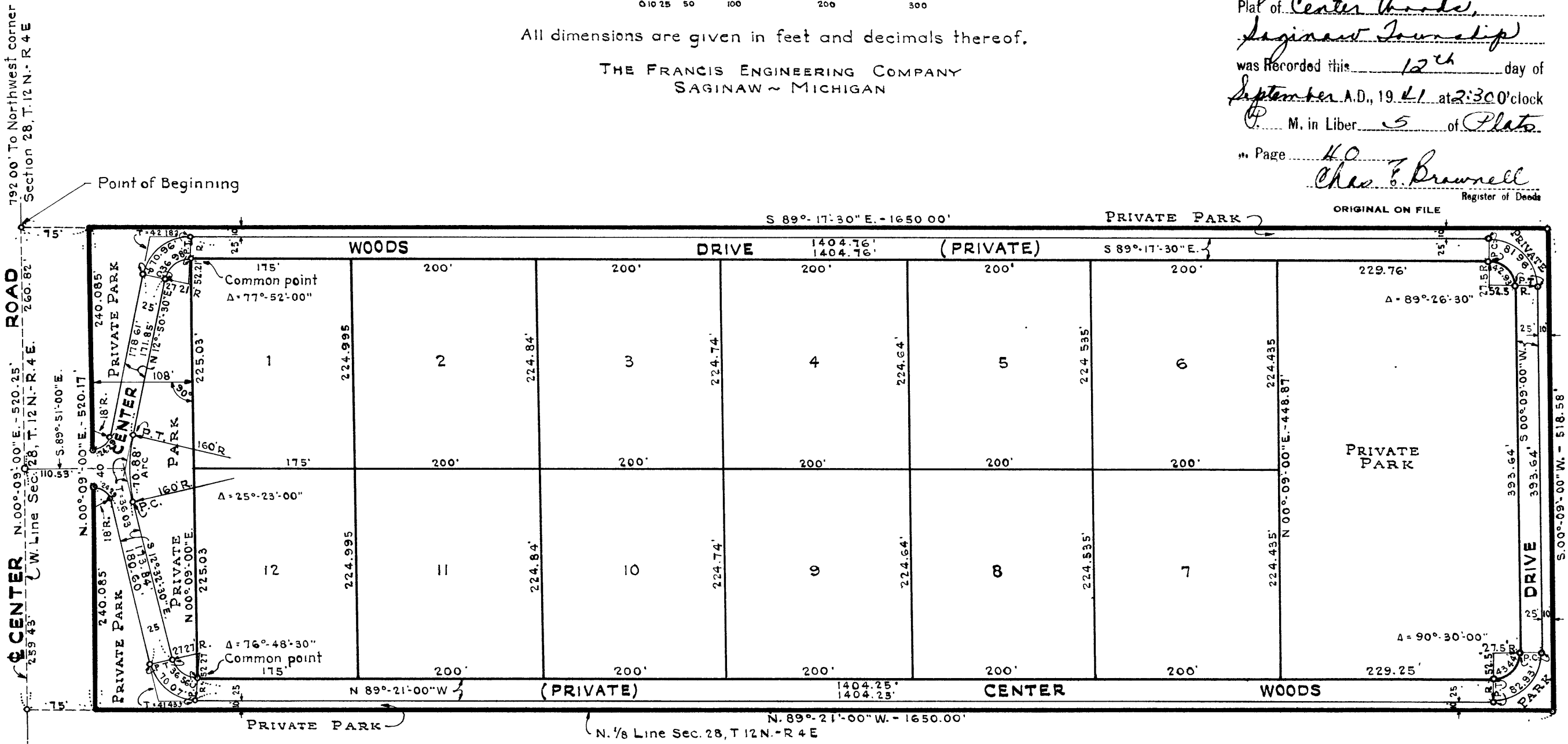


SCALE: 1 INCH = 120 FEET
0 10 25 50 100 200 300

All dimensions are given in feet and decimals thereof.

THE FRANCIS ENGINEERING COMPANY
SAGINAW - MICHIGAN

Register's Office
Saginaw County, ss.
Plat of Center Woods
Saginaw Journal
was recorded this 12th day of
September A.D., 1941 at 2:30 o'clock
P.M. in Liber 5 of Plats
Page 40
Chas. F. Brownell
Register of Deeds



DEDICATION

KNOW ALL MEN BY THESE PRESENTS, That we Donald F. Nash and George Grant III as trustees for proprietors have caused the land embraced in the annexed plat to be surveyed, laid out, and platted, to be known as CENTER WOODS, SECTION TWENTY-EIGHT, TOWNSHIP TWELVE NORTH - RANGE FOUR EAST, SAGINAW TOWNSHIP, SAGINAW COUNTY, MICHIGAN and that the streets and parks as shown on said plat are hereby dedicated to the lots of said plat, except that portion of Center Road included in said plat which is hereby dedicated to the use of the public.

Signed and Sealed in Presence of
Donald F. Nash Donald F. Nash
George Grant III George Grant III
Trustees
Donald R. Williams
STATE OF MICHIGAN, ss.
G.W. Francis
County of Saginaw

On this 14th day of June, 1941 before me, a Notary Public in and for said county, personally came the above named Donald F. Nash and George Grant III, known to me to be the persons who executed the above dedication, and acknowledged the same to be their free act and deed.

Donald R. Williams, Notary Public Saginaw County, Michigan.
My Commission expires August 27, 1944

SURVEYOR'S CERTIFICATE

I hereby certify that the plat hereon delineated is a correct one and that permanent metal monuments consisting of bars not less than one-half inch in diameter and 48 inches in length, or shorter bars of not less than one-half inch in diameter lapped over each other at least 6 inches with an overall length of not less than 48 inches, encased in a concrete cylinder of least 4 inches in diameter and 48 inches in depth have been placed at points marked thus as thereon shown at all angles in the boundaries of the land plotted, at all the intersections of streets, at all points of curve and points of tangent in the street lines, and at all the intersections of streets with the boundaries of the plat as shown on said plat.

G.W. Francis G.W. Francis
Registered Land Surveyor and Registered Professional Engineer.

CERTIFICATE OF MUNICIPAL APPROVAL (TOWNSHIP)

This plat was approved by the Township Board of the Township of Saginaw at a meeting held June 23, 1941.

Meldron W. McLean
Meldron W. McLean - Clerk.

CERTIFICATE OF MUNICIPAL APPROVAL (CITY OF SAGINAW PLANNING COMMISSION)

This plat was approved by the City Planning Commission of the City of Saginaw at a meeting held May 8, 1941.

Russel O. Koenig
Secretary.

CERTIFICATE OF MUNICIPAL APPROVAL (CITY OF SAGINAW)

This plat was approved by the Common Council of the City of Saginaw at a meeting held May 12, 1941.

Beulah A. Tomlinson
Deputy Clerk.

CERTIFICATE AS TO COUNTY ROADS

We hereby certify that said plat appears to include land located on a county road.

Fred Zwerk Fred Zwerk
Fred Falkenhagen Fred Falkenhagen
George Cavanaugh George Cavanaugh

CERTIFICATE OF APPROVAL BY BOARD OF COUNTY ROAD COMMISSIONERS

This plat has been examined and was approved on the 24th day of June, 1941 by the Saginaw County Board of Road Commissioners.

Charles Gottschalk Charles Gottschalk
Chairman.
Arthur Reinbold Arthur Reinbold
Member.
G.E. Ward G.E. Ward
Member.

CERTIFICATE OF APPROVAL BY THE BOARD OF COUNTY AUDITORS

Approved by the Board of County Auditors of Saginaw County, Michigan, this 26th day of June, 1941.

Fred Zwerk Chairman.
Fred Zwerk Fred Zwerk
Fred Falkenhagen Fred Falkenhagen
George Cavanaugh George Cavanaugh

COUNTY TREASURER'S CERTIFICATE RELATING TO TAXES

(Sec. 135 Act 206, 1893, as amended - Sec. 4134, C.L. 1915)
Office of County Treasurer, Saginaw County.

I hereby certify, that there are no tax liens or titles held by the State on the lands described hereon, and that there are no tax liens or titles held by individuals on said lands, for the five years preceding the 24th day of June, 1941 and that the taxes for said period of five years are all paid, as shown by the records of this office.

This certificate does not apply to taxes, if any, now in process of collection by township, city or village collecting officers.
Carl O. Little Carl O. Little
County Treasurer.

DESCRIPTION

The land embraced in the annexed plat of "CENTER WOODS, SECTION TWENTY-EIGHT, TOWNSHIP TWELVE NORTH-RANGE FOUR EAST, SAGINAW TOWNSHIP, SAGINAW COUNTY, MICHIGAN," is described as follows: Commencing at a point on the West line of Section 28, T.12 N. - R.4 E., 792.00 feet South of the Northwest corner of said section, measured on the West line of same, thence from said point of beginning S.89°-17'-30" E. 1650.00 feet, parallel to the North line of said section; thence S.00°-09'-00" W. 518.58 feet, parallel to the West line of said section, to the North 1/8 line of said section; thence N.89°-21'-00" W., along said 1/8 line 1650.00 feet to the West line of said section 28; thence N.00°-09'-00" E along the West line of said section 520.25 feet to the point of beginning.

I HEREBY CERTIFY THAT THIS COPY IS A TRUE COPY OF THE MAP OR PLAT FORWARDED THE REGISTER OF DEEDS FOR RECORDING.

COMPARED September 10, 1941
Mayme Jewell Purdy
Mayme Jewell Purdy DEPUTY AUDITOR GENERAL

Examined and Approved

September 10, 1941
Mayme Jewell Purdy
Mayme Jewell Purdy DEPUTY AUDITOR GENERAL

FILED IN AUDITOR GENERAL'S DEPT.

September 22, 1941
Mayme Jewell Purdy
Mayme Jewell Purdy DEPUTY AUDITOR GENERAL