

CHARTER HEIGHTS

PART OF THE NORTHEAST 1/4 OF THE SOUTHEAST 1/4 OF FRACTIONAL SECTION 18, T.12N. - R.4E.

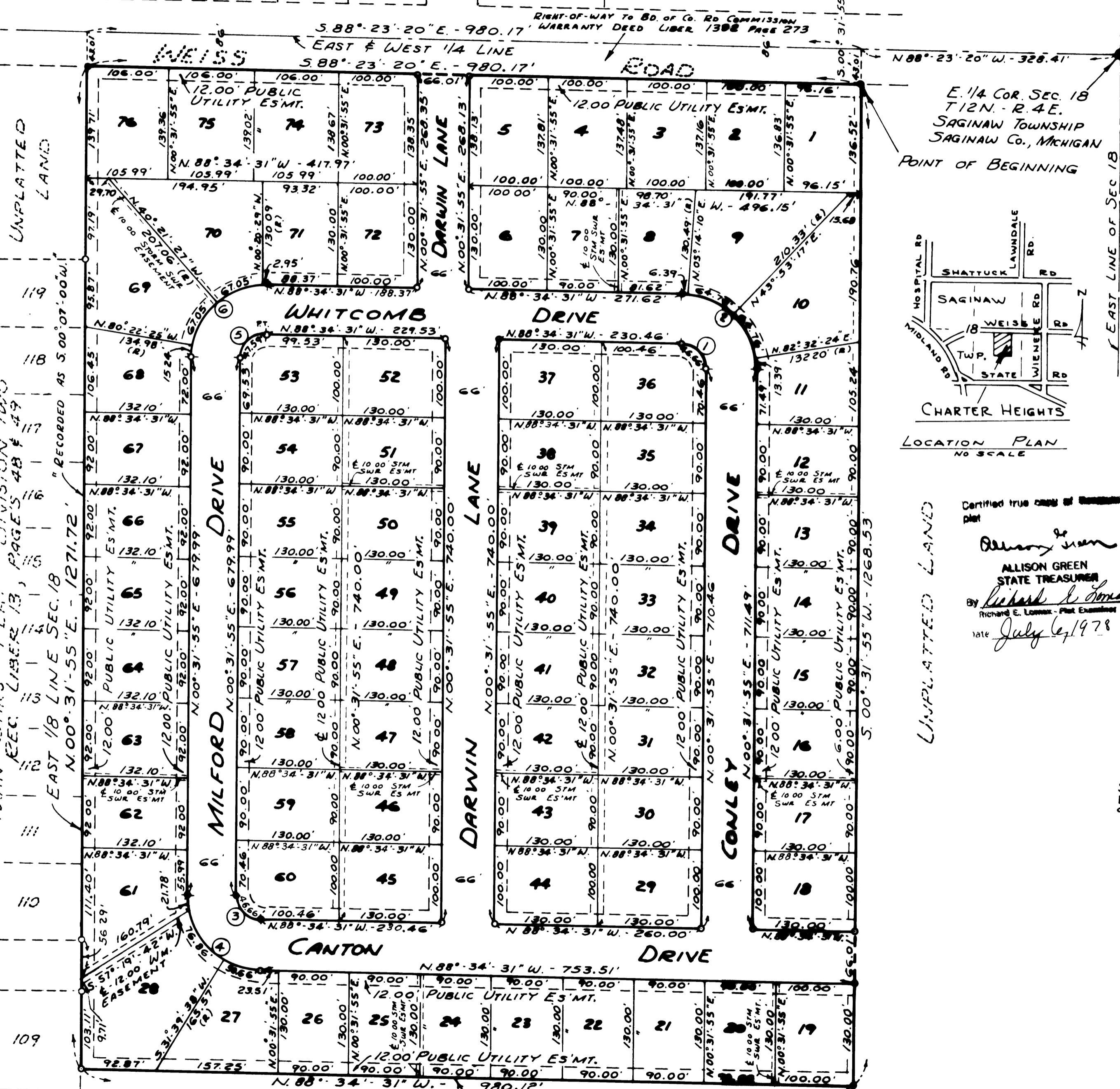
SAGINAW TOWNSHIP, SAGINAW COUNTY, MICHIGAN

CAMBRIDGE VILLAGE
REC. L-20, PGS. 47 & 48

10 11 12 13 14 15

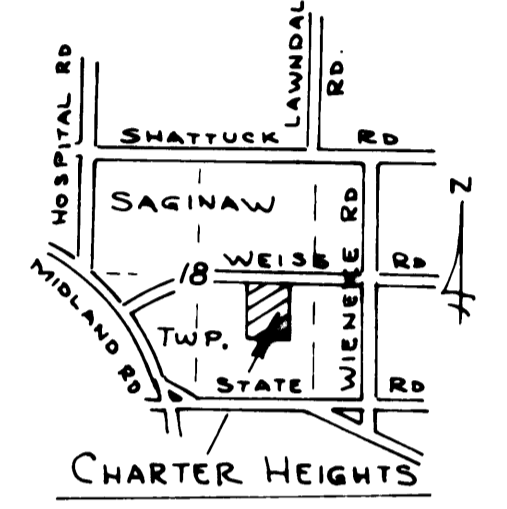
116

UNPLATTED LAND



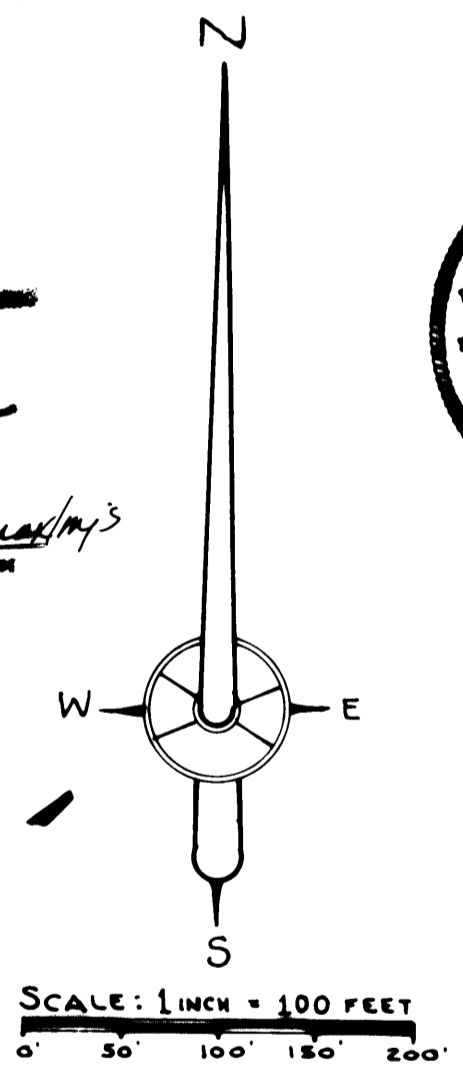
CURVE DATA						
No	DELTA ANGLE	RADIUS	ARC	CHORD	CHD BEARING	TANGENT
1	89°06'26"	30.00	46.66	42.10	S 44°01'18" E	29.54
2	89°06'26"	96.00	149.30	134.70	S 44°01'18" E	94.52
3	89°06'26"	3000	46.66	42.10	S 44°01'18" E	29.54
4	89°06'26"	96.00	149.30	134.70	S 44°01'18" E	94.52
5	90°53'34"	30.00	47.59	42.76	N 45°58'42" E	30.47
6	90°53'34"	96.00	152.29	136.82	N 45°58'42" E	97.51

E 1/4 COR. SEC. 18
T.12N. - R.4E.
SAGINAW TOWNSHIP
SAGINAW CO., MICHIGAN
POINT OF BEGINNING



- NOTES:
- 1- ALL DIMENSIONS ARE GIVEN IN FEET
 - 2- ALL CURVILINEAR MEASUREMENTS ARC ARC DISTANCES
 - 3- CONCRETE MONUMENTS HAVE BEEN PLACED AT ALL POINTS MARKED "O"
 - 4- SET SOLID IRON BARS 1/2" IN DIA BY 18" IN LENGTH AT ALL LOT CORNERS
 - 5- BEARINGS WERE DERIVED FROM THE RECORDED PLAT OF CAMBRIDGE VILLAGE, LIBER 20, PAGES 47 AND 48
 - 6- (R) INDICATES A RADIAL LINE.

Certified true copy of
plat
Allison Green
ALLISON GREEN
STATE TREASURER
By *Richard E. Loman*
Richard E. Loman - Plat Examiner
Date *July 6, 1978*



TWIN OAKS PLAT DIVISION TWO
REC. LIBER 13, PAGES 48 & 49

EAST 1/8 LINE SEC. 18
N 00° 31' 55" E - 1271.72'

RECORDED AS S. 00° 07' 00" W

UNPLATTED LAND

EELMAR DR.

109

SOUTH 1/8 LINE SEC 18
UNPLATTED LAND