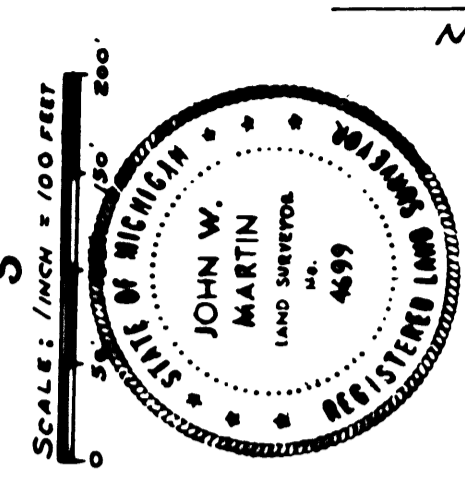


# CHIPPEWA PLACE

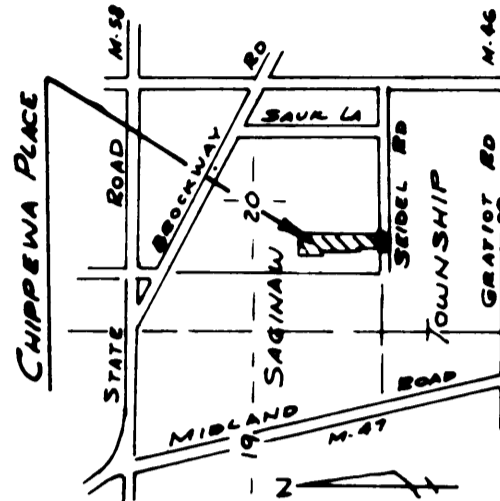
PART OF THE SOUTHWEST 1/4 OF SECTION 20, T.12 N.-R.4E.  
SAGINAW TOWNSHIP, SAGINAW COUNTY, MICHIGAN



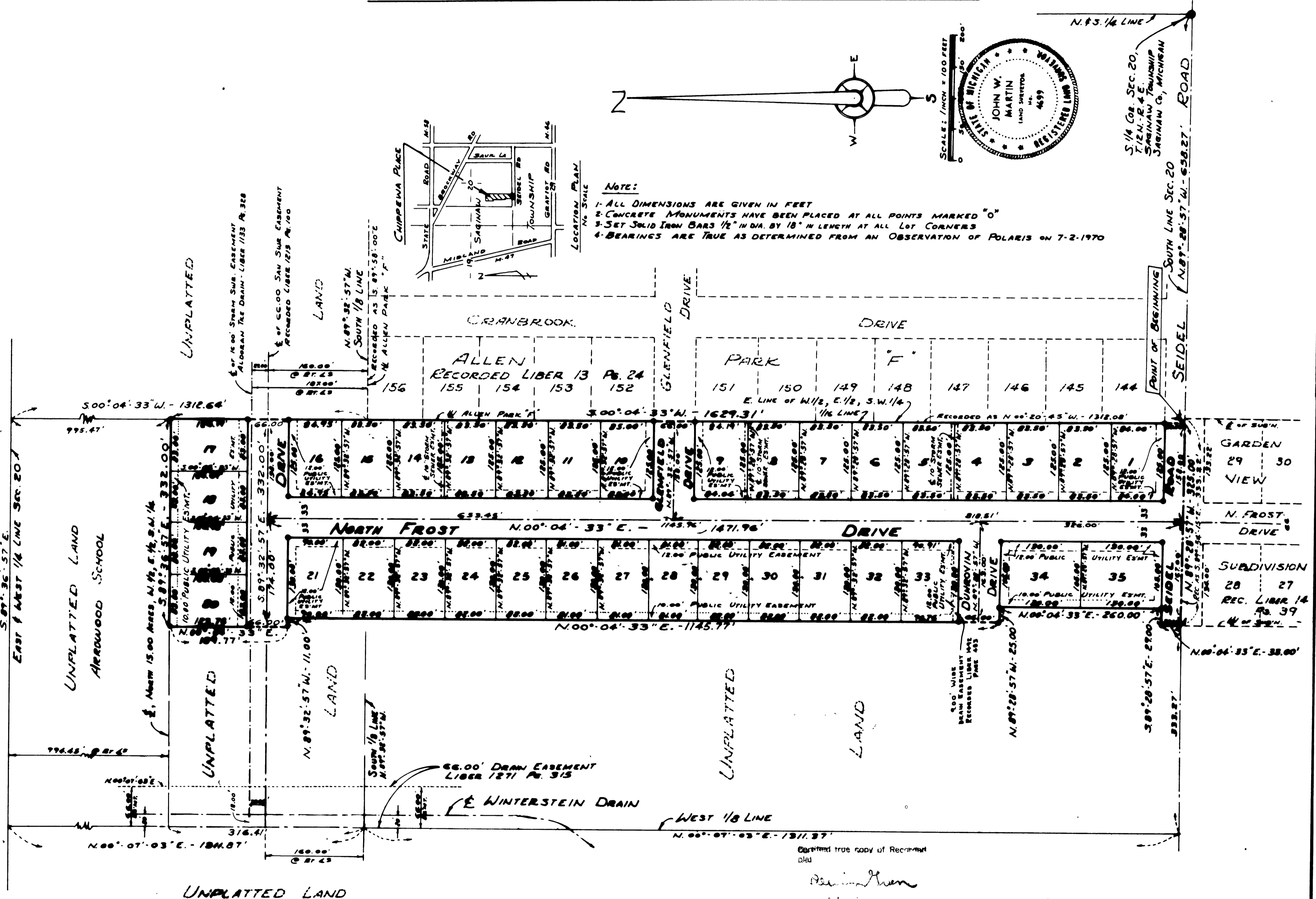
N. 1/4 LINE  
S. 1/4 COR. SEC. 20,  
T.12 N.-R.4E.  
SAGINAW TOWNSHIP  
SAGINAW CO., MICHIGAN

**NOTE:**

- 1- ALL DIMENSIONS ARE GIVEN IN FEET
- 2- CONCRETE MONUMENTS HAVE BEEN PLACED AT ALL POINTS MARKED "O"
- 3- SET SOLID IRON BARS 1/2" IN DIA. BY 18" IN LENGTH AT ALL LOT CORNERS
- 4- BEARINGS ARE TRUE AS DETERMINED FROM AN OBSERVATION OF POLARIS ON 7-2-1970



LOCATION PLAN  
NO. 5742



Certified true copy of Record  
dated

*Richard E. Lomas, Jr.*  
Surveyor  
August 30, 1972