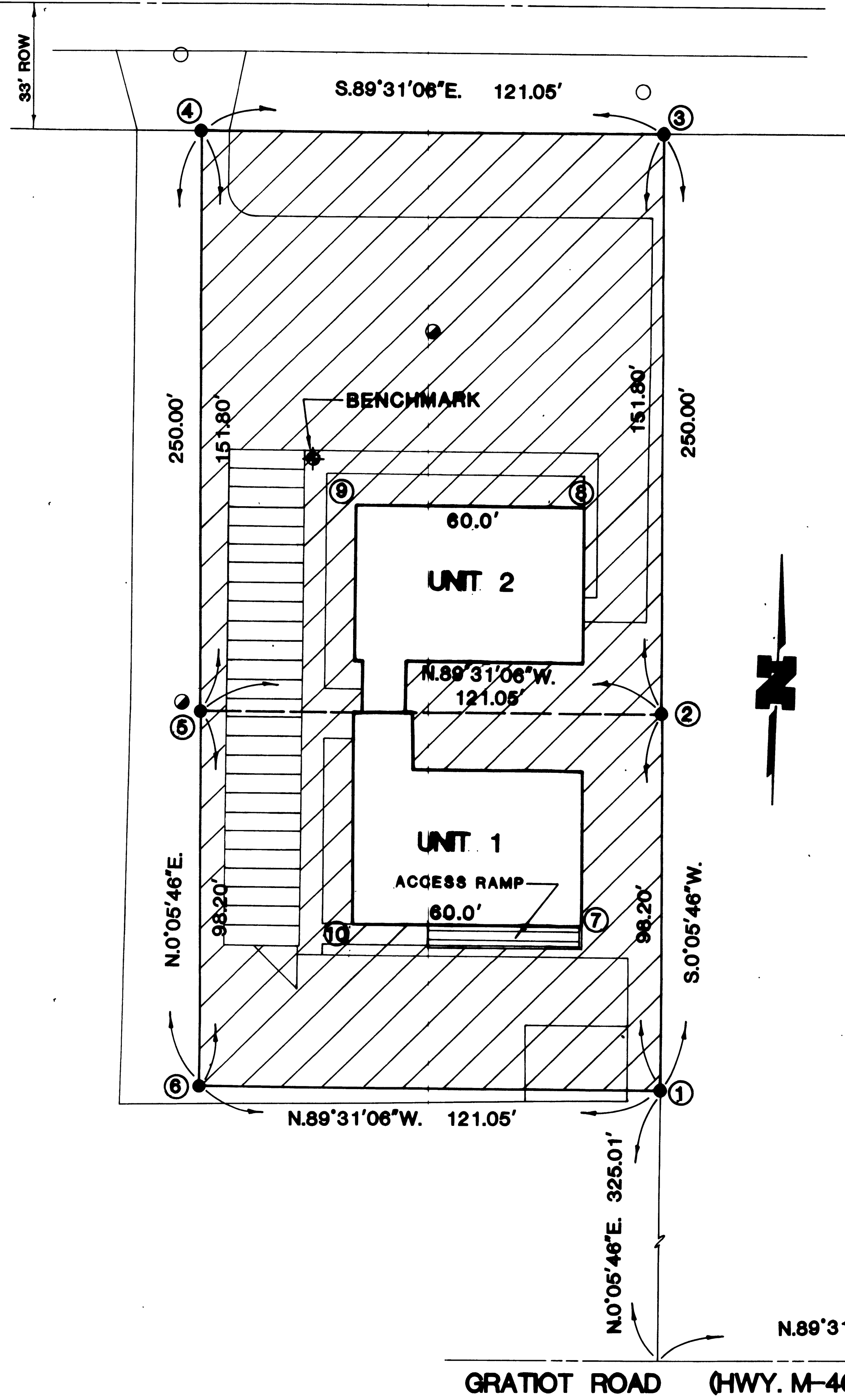


COLONY DRIVE NORTH

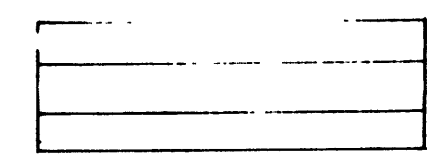
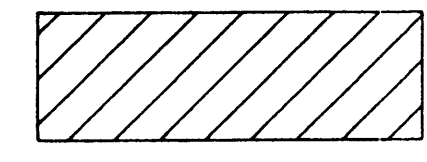




COORDINATE SCHEDULE

POINT	NORTHING	EASTING
1	5338.2016	3431.3508
2	5436.4014	3431.5154
3	5588.2012	3431.7700
4	5589.2188	3310.7243
5	5437.4190	3310.4696
6	5339.2192	3310.3049
7	5381.6624	3410.0580
8	5490.1034	3411.4535
9	5492.8751	3351.4584
10	5382.3841	3350.0629
11	5000.0000	5000.0000

BENCHMARK
 NORTHWEST CORNER OF SIDEWALK ON
 NORTHWEST CORNER OF BUILDING.
 ELEVATION = 601.67

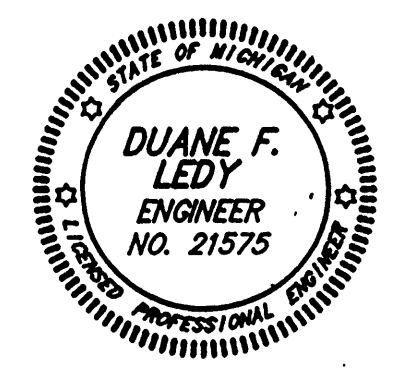
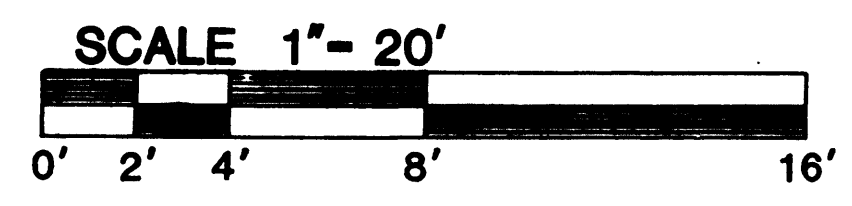
LEGEND

-  LIMITED COMMON ELEMENT
-  GENERAL COMMON ELEMENT
-  LIMITS OF OWNERSHIP
-  COORDINATE POINT

APPROVED

Saginaw Charter Township
 Planning/Zoning Department
 *Plan complies with the conditions of the Planning Commission,
 regulations of the Zoning Ordinance and other pertinent
 Ordinances and policies enforced by this department. This
 does not represent or imply approval by any other department
 or regulating agency.
 DATE: 9-21-09

SITE PLAN
 COLONY DRIVE
 CONDOMINIUM



LEDY & ASSOCIATES INCORPORATED
 CONSULTING ENGINEERS • LAND SURVEYORS
 280 SO. MAIN ST. • FREELAND, MI 48623
 PH.: (517) 695-2593 • FAX: (517) 695-2150

Duane F. Ledy
 DUANE F. LEDY