

DEIBEL ADDITION

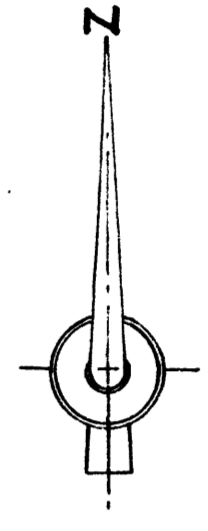
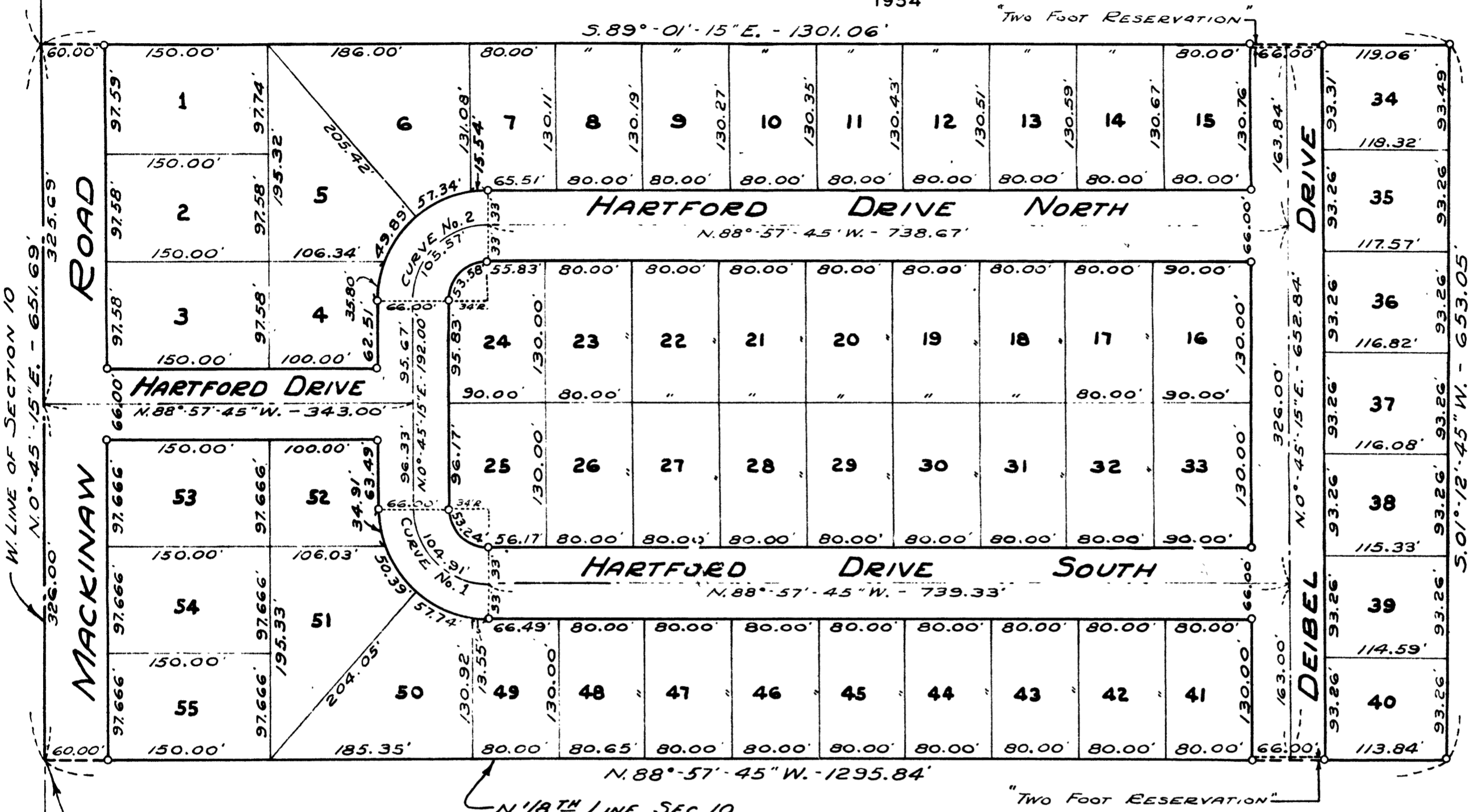
S. HALF OF N.W. 1/4 OF N.W. 1/4 SECTION 10, T. 12 N. - R. 4 E.
SAGINAW TOWNSHIP - SAGINAW COUNTY - MICHIGAN

SCALE: 1 INCH = 100 FEET
ALL DIMENSIONS ARE GIVEN IN FEET AND DECIMALS THEREOF

THE SPICER ENGINEERING COMPANY
SAGINAW, MICHIGAN
1954

COPY

Register's Office
Saginaw County, Michigan
Deibel Addition
Saginaw Township
was recorded this 6 day of
October A.D. 1954 at 4:30
A.M. in Liber. 8 of Page
29
Clara P. Turck



CURVE NO.	DELTA ANGLE	RADIUS	TANGENT	ARC
ONE	89°-43'	67.00'	66.67'	104.91'
TWO	91°-17'	67.00'	67.33'	105.57'

DEDICATION

DESCRIPTION

KNOW ALL MEN BY THESE PRESENTS, That we, Ruth Catherine Deibel, a single woman; Carl Henry Deibel and Margaret Ann Deibel, his wife; Ruben Schoenknecht and Thelma M. Schoenknecht, his wife, as proprietors, have caused the land embraced in the annexed plat to be surveyed, laid out and platted to be known as DEIBEL ADDITION, S. Half Of N.W. 1/4 Of N.W. 1/4, Section 10, T. 12 N. - R. 4 E., Saginaw Township, Saginaw County, Michigan, and that the street, road and drive as shown on said plat are hereby dedicated to the use of the public, Excepting, however, from this dedication land designated "Two Foot Reservation," such land to be dedicated automatically for street purposes at such time as street extensions adjacent thereto are dedicated in adjoining property.

The land embraced in the annexed plat of DEIBEL ADDITION, S. Half Of N.W. 1/4 Of N.W. 1/4, Section 10, T. 12 N. - R. 4 E., Saginaw Township, Saginaw County, Michigan, is described as follows: Commencing at the Southwest corner of the Northwest 1/4 of the Northwest 1/4 of said Section 10; thence N. 00°-45'-15"E., on the West line of said Section, 651.69 feet; thence S. 89°-01'-15"E., on the North line of the South 1/2 of the Northwest 1/4 of the Northwest 1/4 of Section 10, 1301.06 feet; thence S. 01°-12'-45"W., 653.05 feet to the North 1/8th line of said Section 10; thence N. 88°-57'-45"W., on said 1/8th line 1295.84 feet to the point of beginning. CONSISTING OF 55 LOTS

Ruth Catherine Deibel (L.S.)
Ruth Catherine Deibel
Carl Henry Deibel (L.S.)
Carl Henry Deibel
Margaret Ann Deibel (L.S.)
Margaret Ann Deibel
Signed and Sealed in the Presence of
Otto G. Schlesswohl
Otto G. Schlesswohl
Clifford H. Spicer
Clifford H. Spicer
Ruben Schoenknecht (L.S.)
Ruben Schoenknecht
Thelma M. Schoenknecht
Thelma M. Schoenknecht

SURVEYOR'S CERTIFICATE
I hereby certify that the plat hereon delineated is a correct one and that permanent metal monuments consisting of bars not less than one-half inch in diameter and 48 inches in length, or shorter bars of not less than one-half inch in diameter lapped over each other at least 6 inches with an over-all length of not less than 48 inches, encased in a concrete cylinder at least 4 inches in diameter and 48 inches in depth have been placed at points marked thus 0 as thereon shown at all angles in the boundaries of the land platted, at all the intersections of streets, at points of curvature and points of tangency in streets, and at the intersections of streets with the boundaries of the plat as shown on said plat.
Clifford H. Spicer
Clifford H. Spicer - Registered Land Surveyor

ACKNOWLEDGMENT
STATE OF MICHIGAN)
County of Saginaw) ss.
On this 19th day of August 1954, before me, a Notary Public in and for said County, personally came the above named Ruth Catherine Deibel, a single woman; Carl Henry Deibel and Margaret Ann Deibel, his wife; Ruben Schoenknecht and Thelma Schoenknecht, his wife, known to me to be the persons who executed the above dedication and acknowledged the same to be their free act and deed.
Estelle M. Bryan
Estelle M. Bryan
Notary Public, Saginaw County, Michigan
My Commission Expires May 16, 1958

COUNTY TREASURER'S CERTIFICATE RELATING TO TAXES
(Sec. 135, Act 206, 1893, as amended - Sec. 4134, C.L. 1915.)
Office of County Treasurer, Saginaw County
I hereby certify, that there are no tax liens or titles held by the State on the lands described hereon, and that there are no tax liens or titles held by individuals on said lands for the five years preceding the 9th day of September 1954, and that the taxes for said period of five years are all paid, as shown by the records of this office.
This certificate does not apply to taxes, if any, now in process of collection by township, city or village collecting officers.
Carl G. Little
Carl G. Little - County Treasurer

CERTIFICATE OF APPROVAL BY BOARD OF COUNTY ROAD COMMISSIONERS
This plat has been examined and was approved on the 24th day of August 1954, by the Saginaw County Board of Road Commissioners.
The Board of Road Commissioners of Saginaw County, Michigan, assumes no responsibility for the improvement or maintenance of the streets and roads shown on this plat until such time as they have been graded and drained with the necessary drainage structures installed and a gravel, slag, or cinder surface having a compacted thickness of at least 6 inches and a width of at least 18 feet has been applied and approved by this board.
Frank Dudewicz
Frank Dudewicz - Chairman
William M. Trim
William M. Trim - Member
Albert M. Willie
Albert M. Willie - Member

CERTIFICATE OF APPROVAL BY THE COUNTY PLAT BOARD
This plat was approved by The County Plat Board of Saginaw County, Michigan, this 24th day of September 1954.
Clara P. Turck
Clara P. Turck, Register of Deeds, Chairman
Peter Girard
Peter Girard - Auditor
George Kavanaugh
George Kavanaugh - Auditor
Charles E. Taroja, Jr.
Charles E. Taroja, Jr. - Auditor

CERTIFICATE OF APPROVAL BY CITY PLANNING COMMISSION
This plat was approved by the City Planning Commission of the City of Saginaw, Michigan, at a meeting held July 21, 1954.
Russel O. Koenig
Russel O. Koenig - Director

CERTIFICATE OF MUNICIPAL APPROVAL
This plat was approved by the Township Board of the Township of Saginaw at a meeting held September 13, 1954.
Walter Dietzel
Walter Dietzel - Clerk