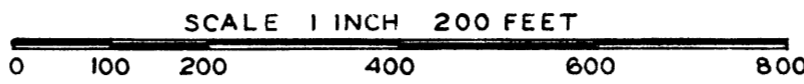


Register's Office  
 County of Saginaw  
 Plat of  
 WAS Recorded this 24 day of February 1959  
 A.D. 1959 at Saginaw  
 M. in Liber. 11  
 on Page 11

# DRAPER VILLAGE PLAT

## DIVISION ONE

PART OF SECTION 28, TOWNSHIP 12 NORTH-RANGE 4 EAST  
 SAGINAW TOWNSHIP, SAGINAW COUNTY, MICHIGAN



ALL DIMENSIONS ARE GIVEN IN FEET AND DECIMALS THEREOF

SPICER ENGINEERING AND ASSOCIATES  
 SAGINAW, MICHIGAN  
 1959

April 21, 1959  
 REGISTER GENERAL'S DEPT.  
 April 21, 1959  
 EXAMINED AND APPROVED  
 April 22, 1959  
 Auditor General

### CERTIFICATE OF APPROVAL BY CITY PLANNING COMMISSION

This plat was approved by the City Planning Commission of the City of Saginaw, Michigan, at a meeting held on the 24 day of February 1959.

John B. Dempsey Secretary

### CERTIFICATE OF MUNICIPAL APPROVAL

This plat was approved by the Township Board of the Township of Saginaw at a meeting held on the 4 day of April 1959.

H. W. Hochthamer Township Clerk

### CERTIFICATE OF APPROVAL BY THE COUNTY PLAT BOARD

This plat was approved by the County Plat Board of Saginaw County, Michigan, this 17 day of April 1959.

Clara P. Turek, Register of Deeds, Chairman  
Benj. G. Wacker Auditor  
William A. Case Auditor  
John H. Deibel Auditor

### DESCRIPTION

The land embraced in the annexed plat of DRAPER VILLAGE PLAT, Division One, Part Of Section 28, Township 12 North-Range 4 East, Saginaw Township, Saginaw County, Michigan, is a replat of Lots 12, 13, 14 and a part of Lot 67 all of "Westdale", Saginaw Township, Saginaw County, Michigan, and is described as follows: Commencing at a point on the North and South quarter line of said Section 28, 300.00 feet Due South along said line from the center of said Section 28; thence Due South along said quarter line 2262.87 feet to the Southeast corner of Lot 67 of "Westdale"; thence N.89°-27'-50"W., along the South line of "Westdale" 840.00 feet; thence Due North 1219.75 feet; thence S.89°-27'-50"E., 158.00 feet; thence Due North 558.48 feet; thence N.29°-00'-00"W., 222.78 feet; thence Due North 159.92 feet; thence N.40°-35'-00"W., 87.62 feet; thence Due North 315.00 feet to the South line of Gratiot Avenue; thence S.89°-27'-20"E., along said line 180.00 feet to the Northeast corner of Lot 12 of "Westdale"; thence Due South along the East line of said Lot 12, 150.00 feet to the Southeast corner of said Lot 12; thence S.89°-27'-20"E., along the North line of said Lot 67, 479.90 feet to the Southeast corner of Lot 4 of "Westdale"; thence Due South 100.00 feet to the Southwest corner of Lot 3 of "Westdale"; thence S.89°-27'-20"E., along the North line of said Lot 67, 187.10 feet to the point of beginning. This plat contains 77 Lots numbered consecutively from 1 to 77 inclusive.

### SURVEYOR'S CERTIFICATE

I hereby certify that the plat herein delineated is a correct one and that permanent metal monuments consisting of bars not less than one-half inch in diameter and 36 inches in length, or shorter bars of not less than one-half inch in diameter lapped over each other at least 6 inches with an over-all length of not less than 36 inches, encased in a concrete cylinder at least 4 inches in diameter and 36 inches in depth have been placed at points marked thus o as thereon shown at all angles in the boundaries of the land platted, at all intersections of streets, at points of curvature and points of tangency in street lines, and at the intersections of streets with the boundaries of the plat as shown on said plat.

Clifford H. Spicer  
 Clifford H. Spicer-Registered Land Surveyor

### DEDICATION

KNOW ALL MEN BY THESE PRESENTS, That we, the D. C. D. Investment Company, a Michigan Corporation, by Harold D. Draper, Sr., President and Harold D. Draper, Jr., Secretary, and Gustave A. Schust, Trustee, under indenture recorded in Liber 607 of Deeds, Page 300 of the Saginaw County records, as proprietors, have caused the land embraced in the annexed plat to be surveyed, laid out and platted to be known as DRAPER VILLAGE PLAT, Division One, Part Of Section 28, Township 12 North-Range 4 East, Saginaw Township, Saginaw County, Michigan, and that the drives and roads as shown on said plat are hereby dedicated to the use of the public, Excepting however, from this dedication land designated "Two Foot Reservation," such land to be dedicated automatically for street purposes at such time as street extensions adjacent thereto are dedicated in adjoining property.

Signed and Sealed in the Presence of

Vernon G. Sherman  
 Vernon G. Sherman  
Arthur Gibson  
 Arthur Gibson  
Chas. C. Norfleet  
 Chas. C. Norfleet  
Mary N. Norfleet  
 Mary N. Norfleet

D. C. D. INVESTMENT COMPANY  
 By Harold D. Draper, Sr. (I.S.)  
 Harold D. Draper, Sr., President  
 By Harold D. Draper, Jr. (I.S.)  
 Harold D. Draper, Jr., Secretary  
Gustave A. Schust (I.S.)  
 Gustave A. Schust, Trustee

### ACKNOWLEDGMENT

STATE OF MICHIGAN ss.  
 County of Saginaw

On this 24 day of April 1959, before me, a Notary Public in and for said County appeared Harold D. Draper, Sr. and Harold D. Draper, Jr., to me personally known, who being each by me duly sworn did say that they are the President and Secretary respectively of the D.C.D. Investment Company, a Michigan Corporation, and that the seal affixed to said instrument was signed and sealed in behalf of said corporation by authority of its Board of Directors and the said Harold D. Draper, Sr. and Harold D. Draper, Jr., acknowledged said instrument to be the free act and deed of said corporation.

My Commission Expires October 15, 1960

Cecile M. Davis  
 Notary Public, Saginaw County, Michigan

### ACKNOWLEDGMENT

STATE OF Florida ss.  
 County of Howard

On this 2nd day of April 1959 before me, a Notary Public in and for said county, personally came the above named Gustave A. Schust, known to me to be the person who executed the above dedication, and acknowledged the same to be his free act and deed.

Notary Public, State of Florida at Large  
 My Commission Expires Jan 13, 1961  
 My Commission Expires

Hazel M. Hall  
 Hazel M. Hall  
 Notary Public Howard, Florida  
 (County) (State)

### COUNTY TREASURER'S CERTIFICATE RELATING TO TAXES (Sec. 135, Act 206, 1893 as amended - Sec. 413h, C. L. 1915.) Office of County Treasurer, Saginaw County

I hereby certify, that there are no tax liens or titles held by the State on the land described hereon, and that there are no tax liens or titles held by individuals on said lands, for the five years preceding the 10th day of April 1959, and that the taxes for said period of five years are all paid, as shown by the records of this office.

This certificate does not apply to taxes, if any, now in process of collection by township, city or village collecting officers.

Carl O. Little  
 Carl O. Little County Treasurer

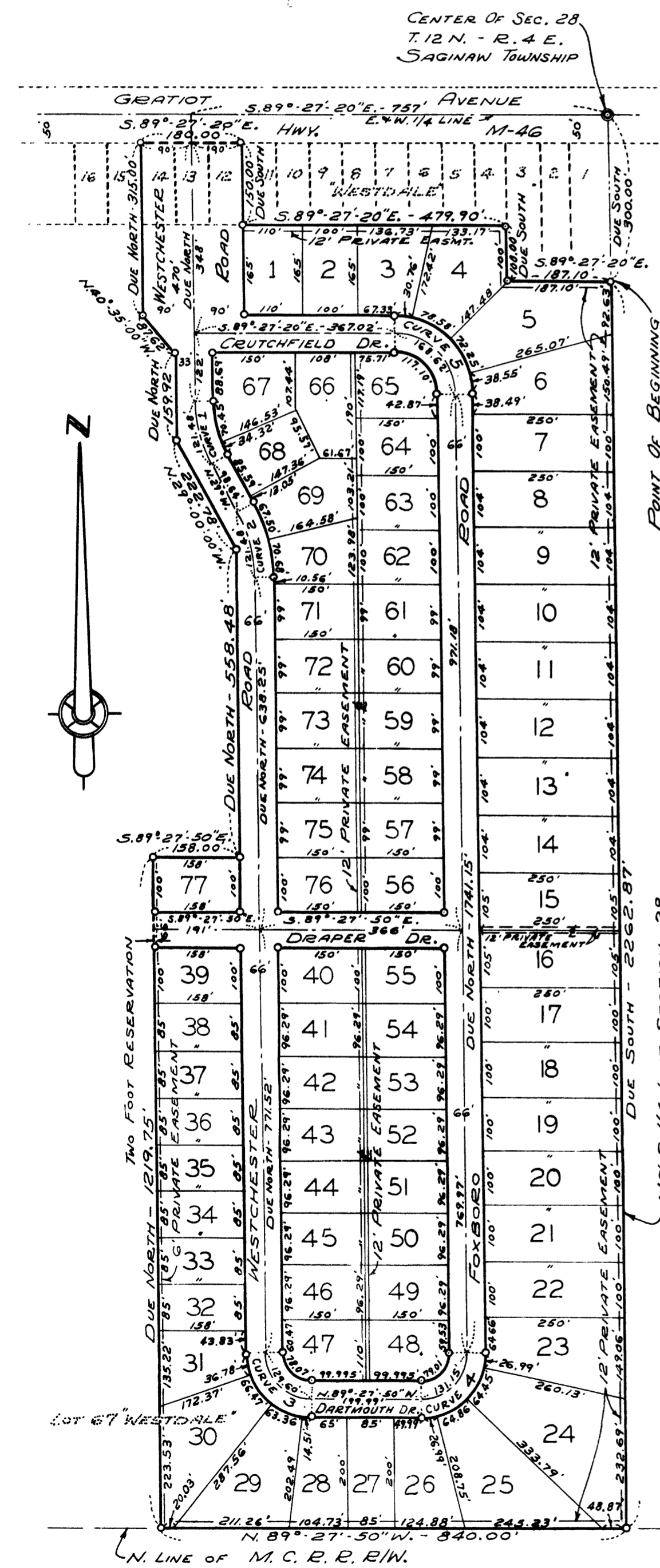
### CERTIFICATE OF APPROVAL BY BOARD OF COUNTY ROAD COMMISSIONERS

This plat has been examined and was approved on the 17th day of April 1959 by the Saginaw County Board of Road Commissioners.

The Board of County Road Commissioners of Saginaw County, Michigan, assume no responsibility for the improvement or maintenance of the Roads or Streets shown on this plat until such time as the following conditions have been met and approved by this Board.

All Roads and Streets are to be graded and drained with necessary drainage structures installed and a roadway surface, which shall consist of crushed stone or natural gravel conforming to Michigan State Highway Department Specifications 21A. The surface shall have a minimum width of 18 feet and a compacted thickness of 6 inches. When crushed stone is used the top 2 inches shall be 21A with screenings added to provide a dense wearing course.

Harold H. Bauer  
 Harold H. Bauer Chairman  
William M. Trim  
 William M. Trim Member  
Frank Dudewicz  
 Frank Dudewicz Member



### CENTERLINE CURVE DATA

	No. 1	No. 2	No. 3	No. 4	No. 5
Δ	29°-00'	29°-00'	89°-27'-50"	90°-32'-10"	89°-27'-20"
R	240.00'	240.00'	83.00'	83.00'	108.00'
T	62.07'	62.07'	82.23'	83.78'	106.98'
ARC	121.48'	121.48'	129.60'	131.15'	168.62'