

# EDWARD MEYER & SON PLAT NUMBER THREE, SECTION 10, T.12 N., R. 4 E., SAGINAW TOWNSHIP, SAGINAW COUNTY, MICHIGAN.

CURVE DATA							
CURVE NO.	T	R	D	Δ	ARC	CHORD	CHORD BEARING
2	249.50	1003.16	5.7115315	27° 56'	489.08	484.24	S. 19° 58' W.
3L	217.16	873.16	6.5618901	27° 56'	425.70	421.49	N. 19° 58' E.
3C	208.96	840.16	6.8196295	27° 56'	409.61	405.56	N. 19° 58' E.
3S	200.75	807.16	7.0984439	27° 56'	393.52	389.63	N. 19° 58' E.
4	168.42	677.16	8.4611908	27° 56'	330.14	326.88	N. 19° 58' E.

### DEDICATION

KNOW ALL MEN BY THESE PRESENTS, That we, EDWARD MEYER & SON INVESTMENT COMPANY, a registered co-partnership, by EDWARD MEYER and EDWARD H. MEYER and LESTER GEORGE ENGEL, as Executor of the Estate and Will of AUGUSTA ENGEL, Deceased, with Power of Sale therein recorded in Liber 1175, Page 819, Register of Deeds Office, Saginaw County, Michigan, as proprietors, have caused the land embraced in the annexed Plat to be surveyed, laid out and platted, to be known as EDWARD MEYER & SON PLAT NUMBER THREE, Section 10, T.12N., R.4E., Saginaw Township, Saginaw County, Michigan, and that the Drive and Places as shown on said plat are hereby dedicated to the use of the public, excepting however, from this dedication, land designated "Two Foot Reservation", such land to be dedicated automatically for street purposes at such time as street extensions adjacent thereto are dedicated in adjoining property. Private easements as shown on said plat are hereby reserved for the installation and maintenance of Public Utilities and no permanent structures are to be located within said Easements.

Signed and Sealed in Presence of  
*Lois L. Quinsey*  
 Lois L. Quinsey  
*T. E. Quinsey*  
 T. E. Quinsey

EDWARD MEYER & SON INVESTMENT COMPANY  
 410 Hancock Street  
 Saginaw, Michigan  
 By *Edward Meyer*  
 Edward Meyer  
 By *Edward H. Meyer*  
 Edward H. Meyer

AUGUSTA ENGEL ESTATE  
 By *Lester George Engel*  
 Lester George Engel  
 3650 Shattuck Road  
 Saginaw, Michigan  
 Executor of the Estate and Will of Augusta Engel, Deceased.

### ACKNOWLEDGMENT

STATE OF MICHIGAN)  
 County of Saginaw)

On this 23rd day of September 1967, before me, a Notary Public in and for said County, personally appeared EDWARD MEYER and EDWARD H. MEYER, co-partners, to me personally known, who being duly sworn did say that they are the co-partners in the registered co-partnership of EDWARD MEYER & SON INVESTMENT COMPANY and LESTER GEORGE ENGEL, to me personally known who being duly sworn did say that he is the Executor of the Estate of Augusta Engel, Deceased, acting under the Power of Sale in the Will of said Augusta Engel, did sign and execute said instrument, by virtue of said authority and did acknowledge said instrument to be the free act and deed of each, respectively.

*Lois L. Quinsey*  
 Lois L. Quinsey  
 Notary Public, Saginaw County, Michigan  
 My Commission Expires September 14, 1971.

### DESCRIPTION OF LAND PLATTED

The land embraced in the annexed plat of EDWARD MEYER & SON PLAT NUMBER THREE, Section 10, T.12N., R.4E., Saginaw Township, Saginaw County, Michigan is described as follows: Beginning at a point on the E. and W. 1/4 line of said Section 10, T.12N., R.4E., 2047.09 ft. S. 87° 50' 34" E. from the W. 1/4 Post; thence continuing S. 87° 50' 34" E., 340.76 ft. to the W. line of Edward Meyer & Son Plat Addition Two; thence along the W. line of Edward Meyer & Son Plat Addition Two S. 06° 00' W., 182.63 ft.; thence S. 49° 02' W., 90.29 ft. to a point on a curve curving to the right, said curve having a radius of 1003.16 ft. and a central angle of 27° 56'; thence S.W'ly on the arc of said curve 489.08 ft. to a point, the subtending chord of said curve bears S. 19° 58' W. and is 484.24 ft. in length; thence S. 03° 06' E., 150.31 ft.; thence S. 33° 56' W., 173.51 ft.; thence N. 51° 27' 38" W., 441.42 ft.; thence N. 33° 56' E., 138.06 ft.; thence N. 45° 01' E., 122.28 ft., to a point on a curve curving to the left, said curve having a radius of 677.16 ft. and a central angle of 27° 56'; thence N.E'ly on the arc of the said curve 330.14 ft. to a point, the subtending chord of said curve bears N. 19° 58' E. and is 326.88 ft. in length; thence N. 41° 48' E., 81.38 ft.; and thence N. 06° 00' E., 159.79 ft. to the point of beginning. This plat contains 15 lots numbered consecutively from 107 to 121 inclusive.

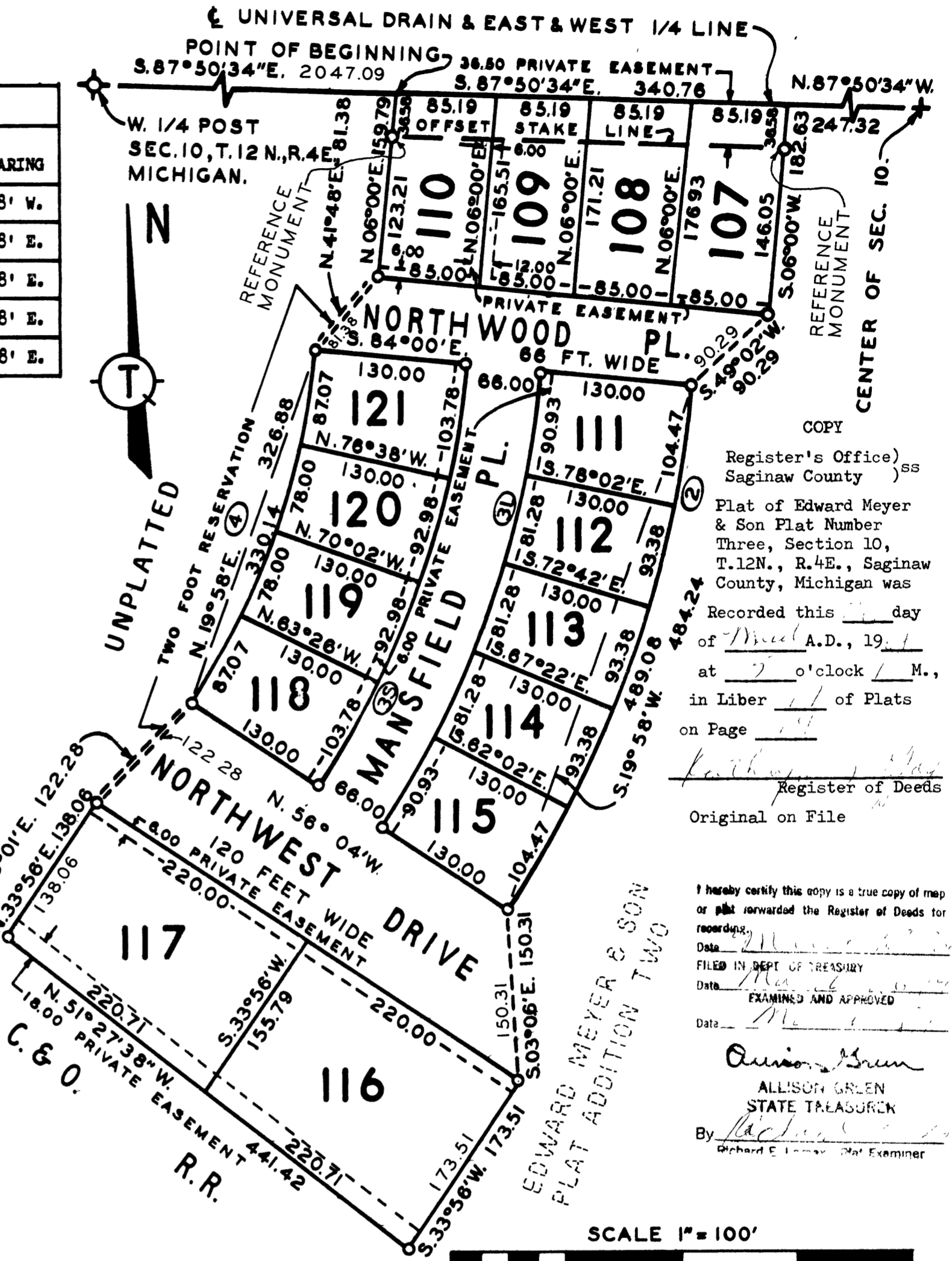
### SURVEYOR'S CERTIFICATE

I HEREBY CERTIFY that the plat hereon delineated is a correct one and that permanent metal monuments consisting of iron rods at least one half inch in diameter and thirty-six inches in length encased in concrete cylinder at least four inches in diameter and thirty-six inches in length have been placed at all points marked thus "o" as thereon shown at all angles in the boundary of the plat, at the intersection of lines of streets, and at the intersection of the lines of streets with the boundaries of the plat as shown on said plat.

Prepared and Drafted By *T. E. Quinsey*  
 THOMAS E. QUINSEY No. 7635  
 2223 N. Michigan Avenue, Saginaw, Michigan  
 Registered Professional Civil Engineer

### CERTIFICATE OF APPROVAL BY TOWNSHIP PLANNING COMMISSION

This plat was approved by the Township Planning Commission of the Township of Saginaw at a meeting held the 25th day of September 1967.  
*Allen Streeter*  
 Allen Streeter Secretary



### CERTIFICATE OF APPROVAL BY COUNTY PLAT BOARD

This plat was approved on the 29th day of December 1967 by the Saginaw County Plat Board.  
*Kathryn J. Gage*  
 Kathryn J. Gage  
 Register of Deeds

*Wm. H. Baughman*  
 Wm. H. Baughman Auditor  
*R. A. Benway*  
 R. A. Benway Auditor  
*Peter Simon*  
 Peter Simon Auditor  
*Raymond Jaenicke*  
 Raymond Jaenicke  
 County Drain Commissioner

### CERTIFICATE OF APPROVAL BY BOARD OF COUNTY ROAD COMMISSIONERS

This plat has been examined and was approved on the 24th day of October 1967 by the Saginaw County Board of Road Commissioners.  
*Harold H. Bauer*  
 Harold H. Bauer Chairman  
*Bruce McDonagh*  
 Bruce McDonagh Member  
*Lloyd C. Falkenhagen*  
 Lloyd C. Falkenhagen Member

SCALE 1" = 100'  
 100 50 0 100 200 300  
 ALL DIMENSIONS ARE IN FEET AND DECIMALS THEREOF.  
 CURVILINEAR MEASUREMENTS ARE ARC LENGTH.

### COUNTY TREASURER'S CERTIFICATE RELATING TO TAXES

(Sec. 135, Act 206.1893, as amended-Sec. 211.135, C.L. 1948)  
 Office of County Treasurer, Saginaw County.

I hereby certify, That there are .70 tax liens or titles, held by the State on the lands described hereon, and that there are .70 tax liens or titles held by individuals on said lands for the five years preceding the 31st day of October 1967, and that the taxes for said period of five years are all paid, as shown by the records of this office.

This certificate does not apply to taxes, if any, now in process of collection by township, city or village collecting officers.

*Raymond J. Dankers*  
 Raymond J. Dankers  
 County Treasurer

### CERTIFICATE OF MUNICIPAL APPROVAL

This plat was approved by the Township Board of the Township of Saginaw at a meeting held October 9, 1967 and complies with Sec. 19A and the width of lots is in compliance with requirements of Section 30, Act 172, of 1929, as amended.  
*Richard Stroebel*  
 Richard Stroebel (Clerk)

COPY  
 Register's Office)  
 Saginaw County )  
 Plat of Edward Meyer & Son Plat Number Three, Section 10, T.12N., R.4E., Saginaw County, Michigan was Recorded this day of December A.D., 1967 at 7 o'clock P. M., in Liber 1175 of Plats on Page 819  
*Kathryn J. Gage*  
 Register of Deeds  
 Original on File

I hereby certify this copy is a true copy of map or plat forwarded the Register of Deeds for recording.  
 Date March 1, 1968  
 FILED IN DEPT. OF TREASURY  
 Date March 1, 1968  
 EXAMINED AND APPROVED  
 Date March 1, 1968  
*Allison Green*  
 ALLISON GREEN  
 STATE TREASURER  
 By *Richard E. L...*  
 Richard E. L... Plat Examiner