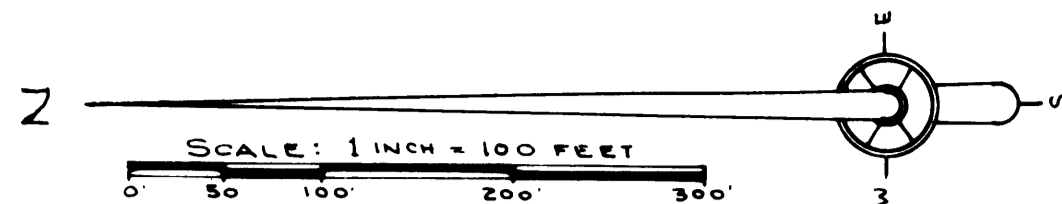
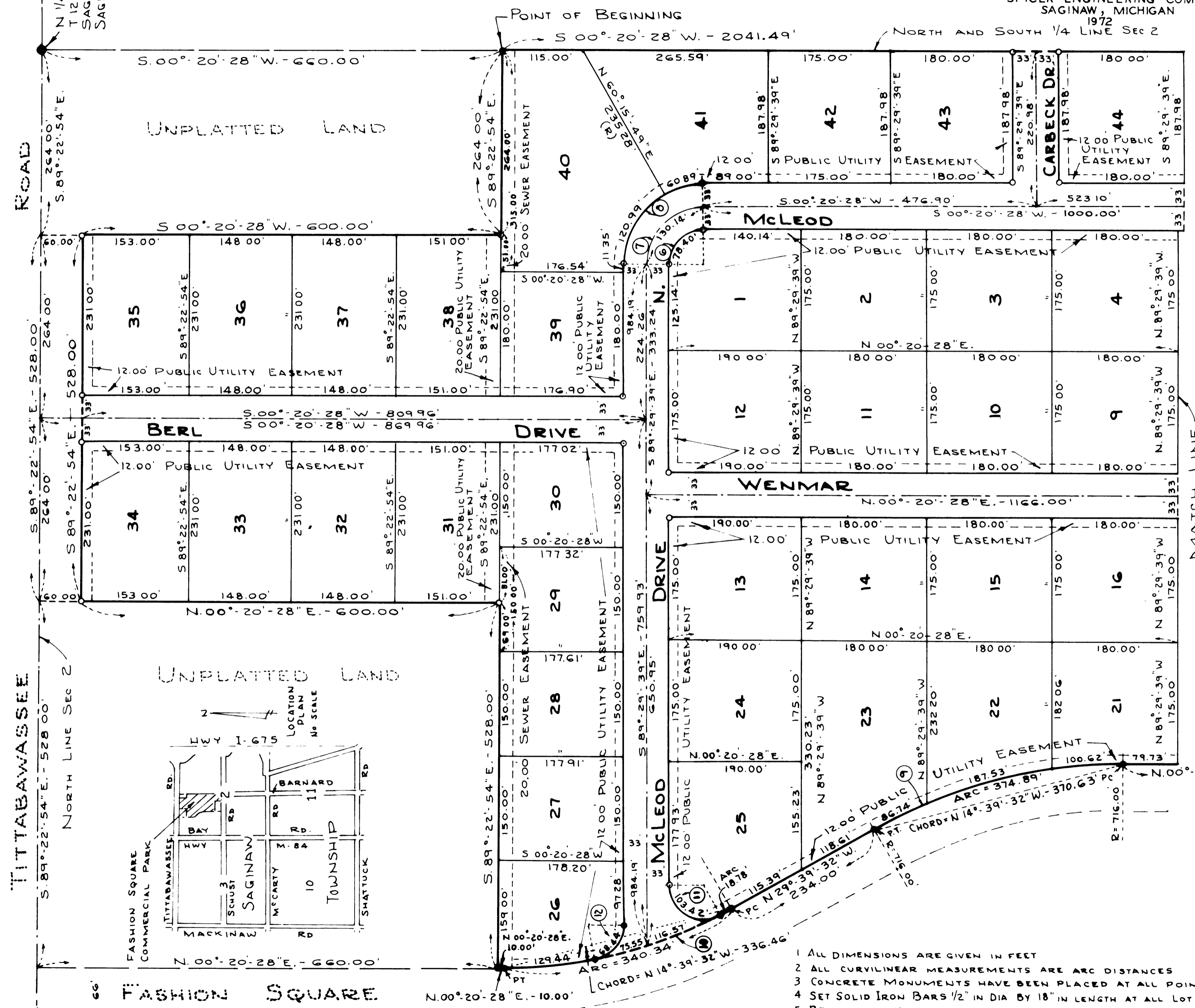


FASHION SQUARE COMMERCIAL PARK

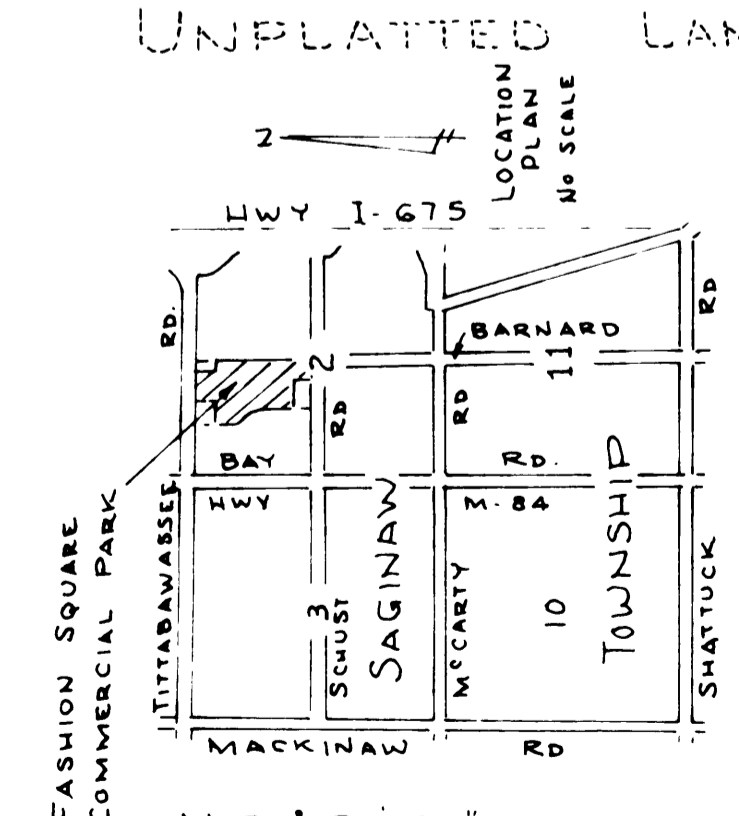
PART OF THE NORTHWEST 1/4 OF SECTION 2, T.12N.-R.4E.
SAGINAW TOWNSHIP, SAGINAW COUNTY, MICHIGAN.



SPICER ENGINEERING COMPANY
SAGINAW, MICHIGAN
1972



NO	DELTA ANGLE	CURVE DATA		TANGENT
		ARC	CHORD	
1	90°-09'-53"	78.68'	70.81'	50.14'
2	89°-50'-07"	78.40'	70.61'	49.86'
3	90°-09'-53"	78.68'	70.81'	50.14'
4	90°-09'-53"	83.00'	117.55'	83.24'
5	90°-09'-53"	182.55'	164.28'	116.33'
6	89°-50'-07"	78.40'	70.61'	49.86'
7	89°-50'-07"	130.14'	117.21'	82.76'
8	89°-50'-07"	181.88'	163.81'	115.67'
9	30°-00'-00"	374.89'	370.63'	191.85'
10	30°-00'-00"	650.00'	336.46'	174.17'
11	118°-30'-34"	103.42'	85.94'	84.06'
12	78°-25'-33"	68.44'	63.22'	40.80'



- 1 ALL DIMENSIONS ARE GIVEN IN FEET
- 2 ALL CURVILINEAR MEASUREMENTS ARE ARC DISTANCES
- 3 CONCRETE MONUMENTS HAVE BEEN PLACED AT ALL POINTS MARKED "O"
- 4 SET SOLID IRON BARS 1/2" IN DIA BY 18" IN LENGTH AT ALL LOT CORNERS
- 5 BEARINGS ARE TRUE AS DETERMINED FROM AN OBSERVATION OF POLARIS ON 11-24-70
- 6 (R) INDICATES CURVE NUMBER (SEE CURVE TABLE HEREON)
- 7 (R) INDICATES RADIAL LINE