

FLEETWOOD SUBDIVISION

A PART OF N.W. 1/4 OF SECTION 28, T.12N.-R.4E. SAGINAW TOWNSHIP-SAGINAW COUNTY - MICHIGAN

SCALE: 1 INCH = 200 FEET
0 100 200 400 600 800
ALL DIMENSIONS ARE GIVEN IN FEET AND DECIMALS THEREOF

THE SPICER ENGINEERING COMPANY
SAGINAW, MICHIGAN

FEBRUARY 1956

DEDICATION

COUNTY TREASURER'S CERTIFICATE RELATING TO TAXES
(Sec. 135, Act 206, 1893 as amended - Sec. 4134, C.L. 1915.)
Office of County Treasurer, Saginaw County

I hereby certify, that there are no tax liens or titles held by the State on the land described hereon, and that there are no tax liens or titles held by individuals on said lands, for the five years preceding the 7th day of June, 1956, and that the taxes for said period of five years are all paid, as shown by the records of this office.

This certificate does not apply to taxes, if any, now in process of collection by township, city or village collecting officers.

Carl O. Little
County Treasurer

KNOW ALL MEN BY THESE PRESENTS, That we, Cecil A. Baskins and Erma A. Baskins, his wife; Thomas A. Baskins and Harriet J. Baskins, his wife; Ford R. Sargent, a widower; and F. Roland Sargent and Marianne Sargent, his wife, as proprietors, have caused the land embraced in the annexed plat to be surveyed, laid out and platted to be known as FLEETWOOD SUBDIVISION, A Part Of N.W. 1/4 Of Section 28, T.12 N.-R.4 E., Saginaw Township, Saginaw County, Michigan, and that the avenue, lanes, places, street and drive as shown on said plat are hereby dedicated to the use of the public, Excepting however, from this dedication land designated "Two Foot Reservation," such land to be dedicated automatically for street purposes at such time as street extensions adjacent thereto are dedicated in adjoining property.

Cecil A. Baskins (L.S.)
Erma A. Baskins (L.S.)
Thomas A. Baskins (L.S.)
Harriet J. Baskins (L.S.)

Ford R. Sargent (L.S.)
F. Roland Sargent (L.S.)
Marianne Sargent (L.S.)
Amelia Bowden (L.S.)

Signed and Sealed in the Presence of

Wm. G. Phelps
Catherine L. Gaus

ACKNOWLEDGMENT

STATE OF MICHIGAN) ss.
County of Saginaw)

On this 28th day of April, 1956, before me, a Notary Public in and for said County, personally came the above named Cecil A. Baskins and Erma A. Baskins, his wife; Thomas A. Baskins and Harriet J. Baskins, his wife; Ford R. Sargent, a widower; and F. Roland Sargent and Marianne Sargent, his wife, known to me to be the persons who executed the above dedication and acknowledged the same to be their free act and deed.

Bernice M. Kremer
Notary Public, Saginaw County, Michigan
My Commission Expires Sept. 12, 1958

DESCRIPTION

The land embraced in the annexed plat of FLEETWOOD SUBDIVISION, A Part Of N.W. 1/4 Of Section 28, T.12 N.-R.4 E., Saginaw Township, Saginaw County, Michigan, is described as follows: Commencing at the North 1/4 post of said Section 28, thence S. 00°-41'-20"E., on the North and South line of Section 28, 2620.62 feet to the East and West 1/4 line of said line of Section 28, 2620.62 feet to the East and West 1/4 line of said Section; thence S. 89°-51'-10"W., on said quarter line 327.97 feet; thence N. 00°-41'-10"W., 2621.00 feet to the North line of said Section 28; thence N. 89°-55'-10"E., on said Section line 327.86 feet to the point of beginning. This plat contains 32 Lots numbered consecutively from 1 to 32 inclusive.

SURVEYOR'S CERTIFICATE

I hereby certify that the plat hereon delineated is a correct one and that permanent metal monuments consisting of bars not less than one-half inch in diameter and 36 inches in length, or shorter bars of not less than one-half inch in diameter lapped over each other at least 6 inches with an over-all length of not less than 36 inches, encased in a concrete cylinder at least 4 inches in diameter and 36 inches in depth have been placed at points marked thus o as thereon shown at all angles in the boundaries of the land platted, at all intersections of streets, and at the intersections of streets with the boundaries of the plat as shown on said plat.

Clifford H. Spicer
Registered Land Surveyor

CERTIFICATE OF APPROVAL BY BOARD OF COUNTY ROAD COMMISSIONERS

This plat has been examined and was approved on the 22nd day of May, 1956 by the Saginaw County Board of Road Commissioners.

The Board of County Road Commissioners of Saginaw County, Michigan, assume no responsibility for the improvement or maintenance of the Roads or Streets shown on this Plat until such time as the following conditions have been met and approved by this Board.

All Roads and Streets are to be graded and drained with necessary drainage structures installed and a roadway surface, which shall consist of crushed stone or natural gravel conforming to Michigan State Highway Department Specifications 21A. The surface shall have a minimum width of 18 feet and a compacted thickness of 6 inches. When crushed stone is used the top 2 inches shall be 21A with screenings added to provide a dense wearing course.

Albert H. Wille Chairman
William M. Trim Member
Frank Dudewicz Member

CERTIFICATE OF MUNICIPAL APPROVAL

This plat was approved by the Township Board of the Township of Saginaw at a meeting held the 7 day of May, 1956.

Walter Lietzel Clerk

CERTIFICATE OF APPROVAL BY THE COUNTY PLAT BOARD

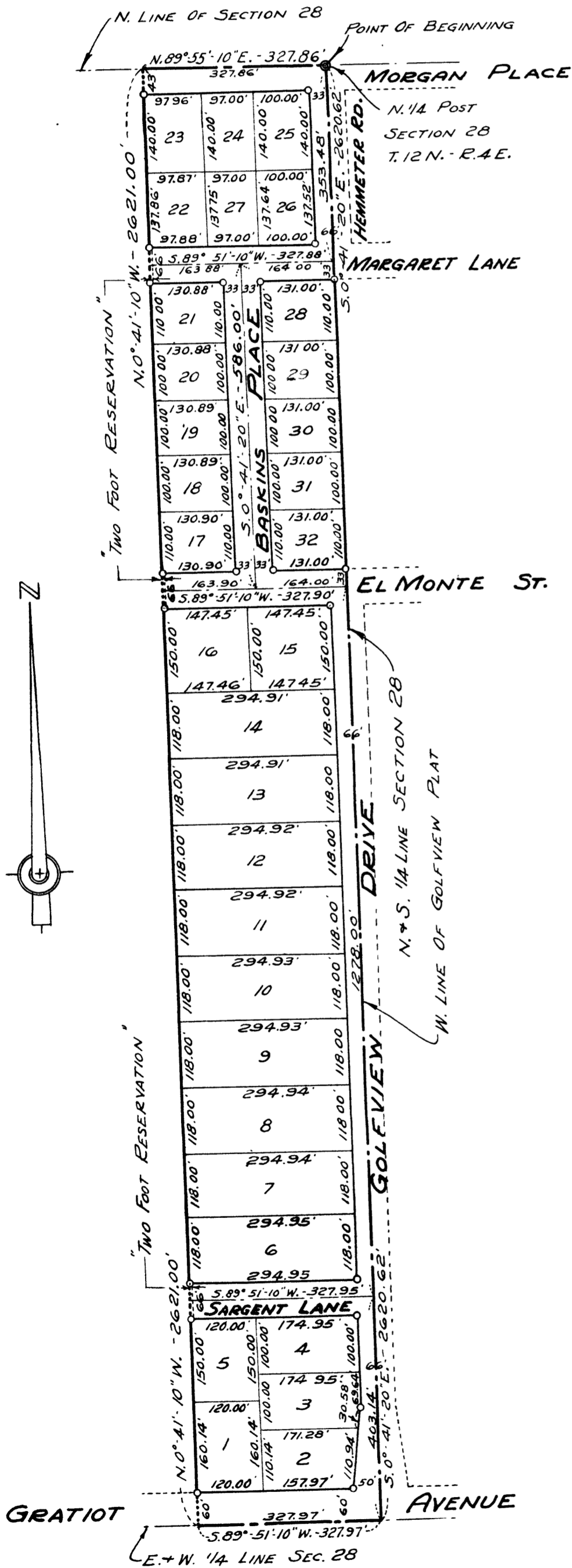
This plat was approved by the County Plat Board of Saginaw County, Michigan, this 21st day of June, 1956.

Clara P. Turek Register of Deeds-Chairman
Peter Girard Auditor
George Cavanaugh Auditor
William A. Case Auditor

CERTIFICATE OF APPROVAL BY CITY PLANNING COMMISSION

This plat was approved by the City Planning Commission of the City of Saginaw, Michigan, at a meeting held on the 24th day of April, 1956.

Russel O. Koenig Director



Register's Office
Saginaw County, Mich.
Plat of Fleetwood Subdivision
was returned this 22th day of May, 1956
by Clifford H. Spicer
Auditor General

I hereby certify this copy is a true COPY of MAP or plat marked the RECORD of SAGINAW COUNTY RECORDS.
Date July 20, 1956
FILED IN SECTION 28, T.12 N.-R.4 E.
Date July 20, 1956
EXAMINED AND APPROVED
Date July 20, 1956
Francis J. Spencer Auditor General
By W. H. Muehlenberg