

# FOX POINTE ESTATES

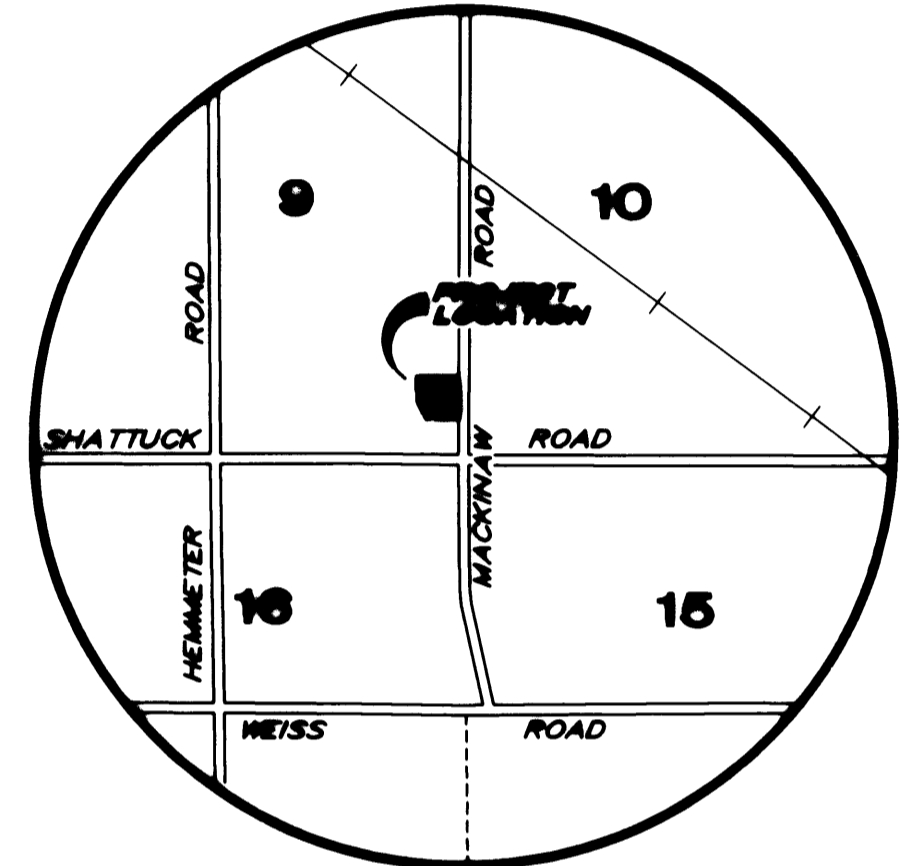
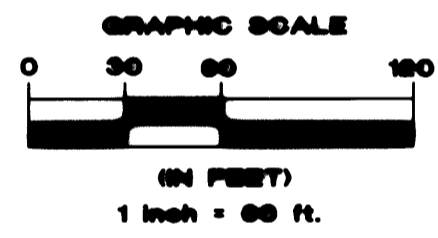
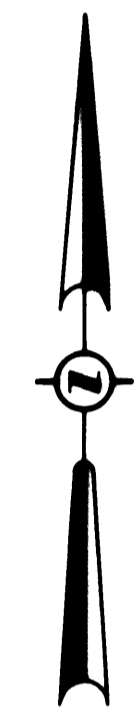
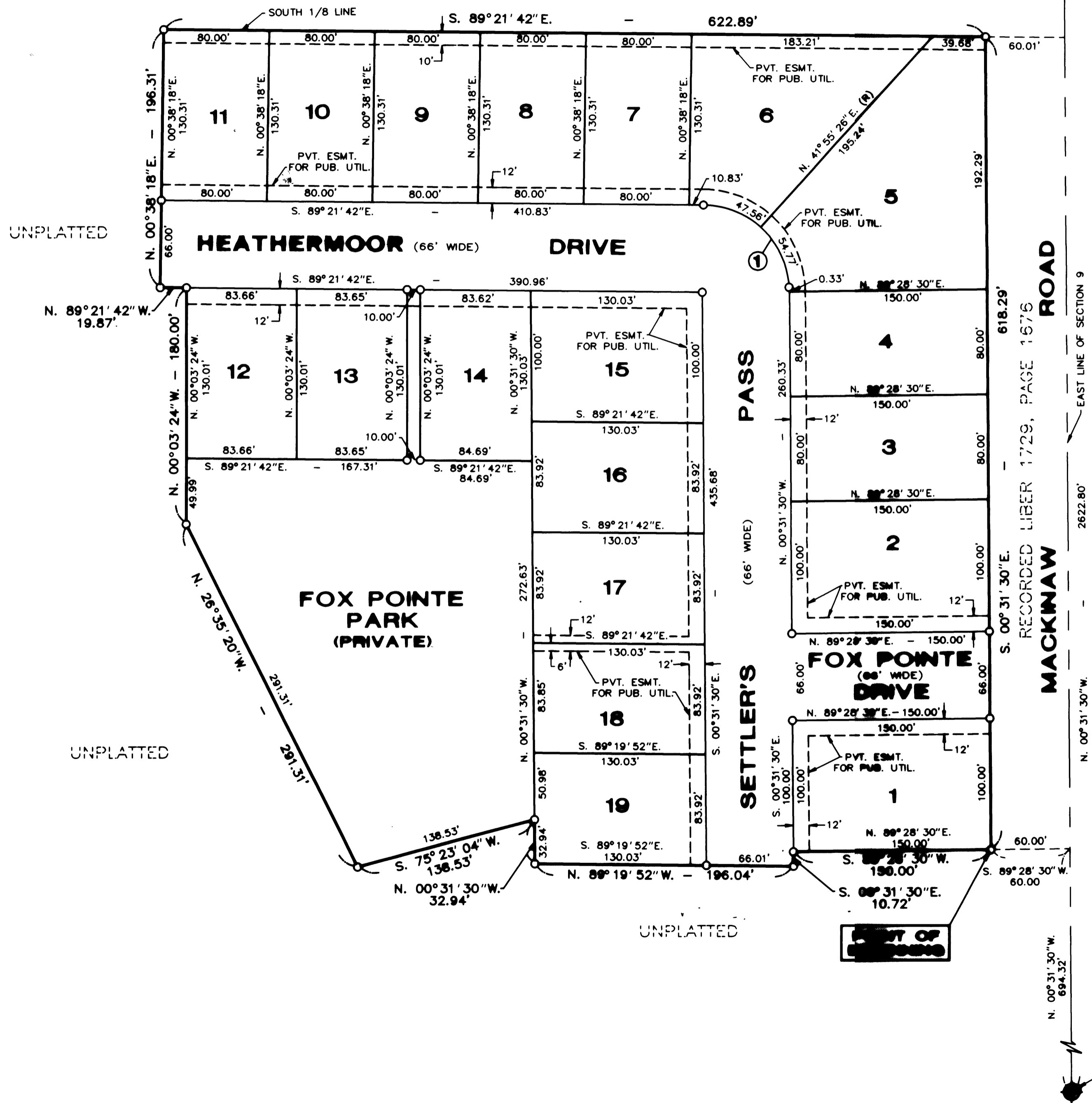
PART OF THE SE 1/4, SECTION 9. T.12N.-R.4E.  
SAGINAW TOWNSHIP, SAGINAW COUNTY, MICHIGAN

UNPLATTED

E 1/4 CORNER  
SECTION 9  
T.12N.-R.4E.  
LCRC L. 6, PG. 155

### CURVE TABLE

CURVE	RADIUS	LENGTH	CHORD	BEARING	DELTA
1	66.00'	102.33'	92.39'	N. 44°56'39" W.	88°50'34"



#### LEGEND

1. ALL DIMENSIONS ARE IN FEET.
2. MONUMENTS, CONSISTING OF IRON RODS, ONE HALF INCH IN DIAMETER AND 36 INCHES IN LENGTH WITH CAP No. 26484, ENCASED IN CONCRETE CYLINDERS, 4 INCHES IN DIAMETER AND 36 INCHES IN LENGTH, HAVE BEEN PLACED AT ALL POINTS SHOWN BY SYMBOL "O".
3. SET 1/2 INCH IRON ROD, 18 INCHES IN LENGTH WITH CAP No. 26484, AT ALL LOT CORNERS.
4. (NR) INDICATES NON-RADIAL LINE  
(R) INDICATES RADIAL LINE
5. BEARINGS WERE DERIVED FROM "SHERWOOD PARK" RECORDED IN LIBER 8 OF PLATS, PAGE 47, SAGINAW COUNTY RECORDS.
6. ALL CURVILINEAR DIMENSIONS ARE ARC LENGTHS.



*Brian D. Ferguson*  
Brian D. Ferguson  
P.S. No. 26454

SE CORNER  
SECTION 9  
T.12N.-R.4E.  
LCRC L. 6, PG. 155