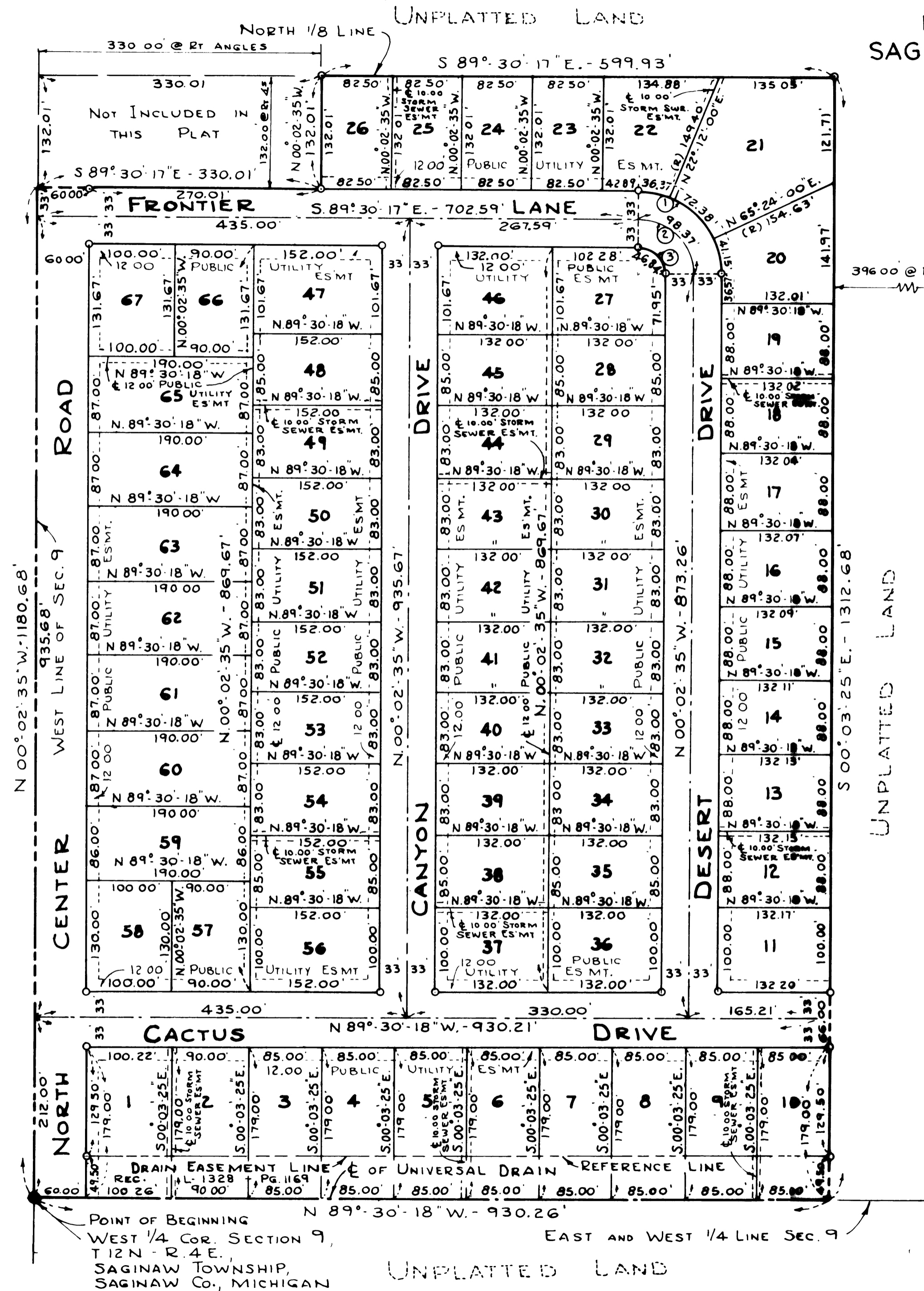


# FRONTIER PARK

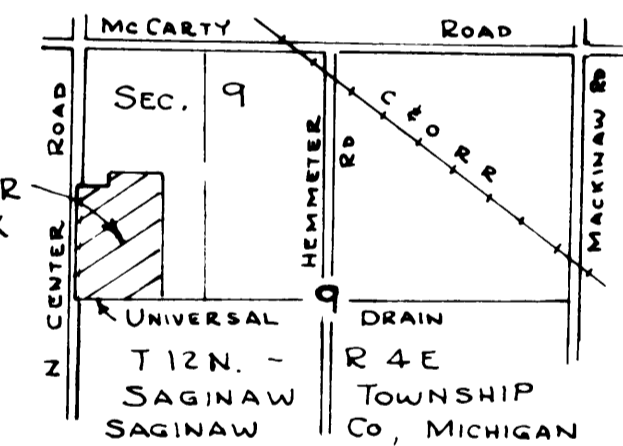
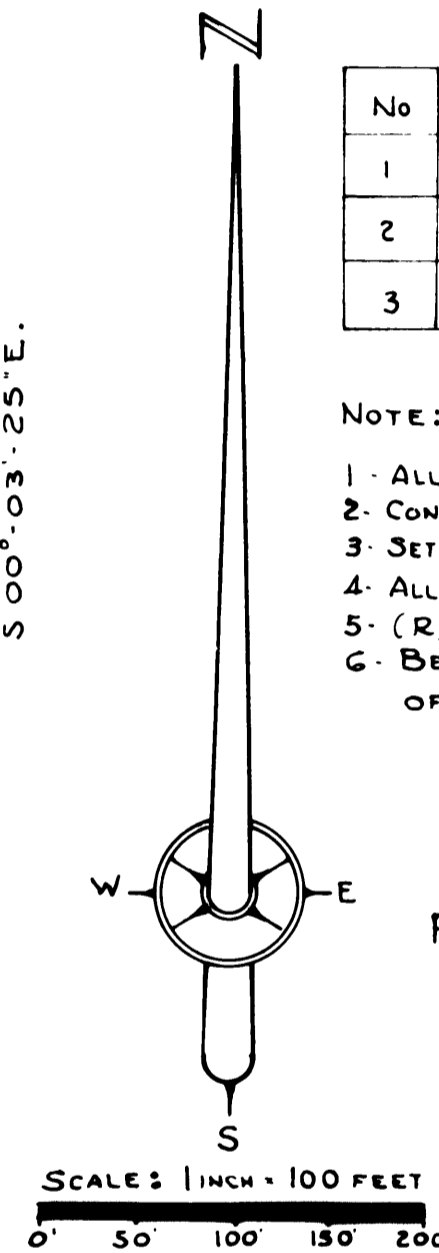
PART OF THE NORTHWEST 1/4 OF SECTION 9, T.12N. - R.4E.  
SAGINAW TOWNSHIP, SAGINAW COUNTY, MICHIGAN



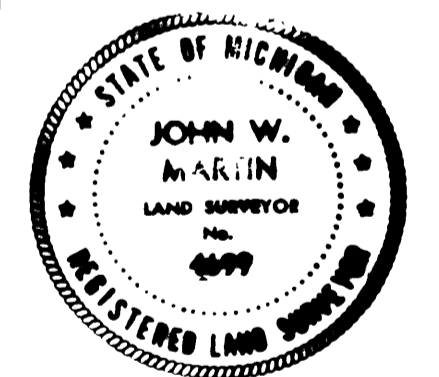
No	DELTA ANGLE	RADIUS	ARC	CHORD	CHD BEARING	TANGENT
1	89° 27' 42"	96.00'	149.90'	135.13'	S 44° 46' 26" E	95.10'
2	89° 27' 42"	63.00'	98.37'	88.68'	S 44° 46' 26" E	62.41'
3	89° 27' 42"	30.00'	46.84'	42.23'	S 44° 46' 26" E	29.72'

**NOTE:**

- 1 - ALL DIMENSIONS ARE GIVEN IN FEET
- 2 - CONCRETE MONUMENTS HAVE BEEN PLACED AT ALL POINTS MARKED "O"
- 3 - SET SOLID IRON BARS 1/2" IN DIA. BY 18" IN LENGTH AT ALL LOT CORNERS
- 4 - ALL CURVILINEAR MEASUREMENTS ARE ARC DISTANCES
- 5 - (R) INDICATES A RADIAL LINE
- 6 - BEARINGS ARE TRUE AS DETERMINED FROM AN OBSERVATION OF POLARIS ON MARCH 12, 1970



LOCATION MAP  
NO SCALE



CERTIFIED TRUE COPY OF  
RECORDED PLAT.

*Loren E. Munkoe*

LOREN E. MUNKOE  
STATE TREASURER

*Richard L. Tompkins*  
Michigan State Plat Examiner

January 3, 1978