

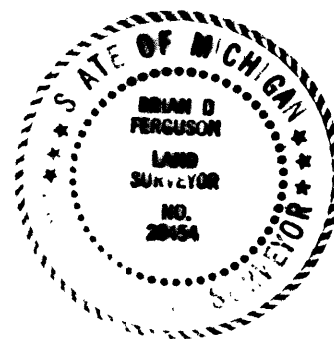
GATEHOUSE MANOR ESTATES

PART OF THE N.W. 1/4, SECTION 7, T.12N.-R.4E.
SAGINAW TOWNSHIP, SAGINAW COUNTY, MICHIGAN

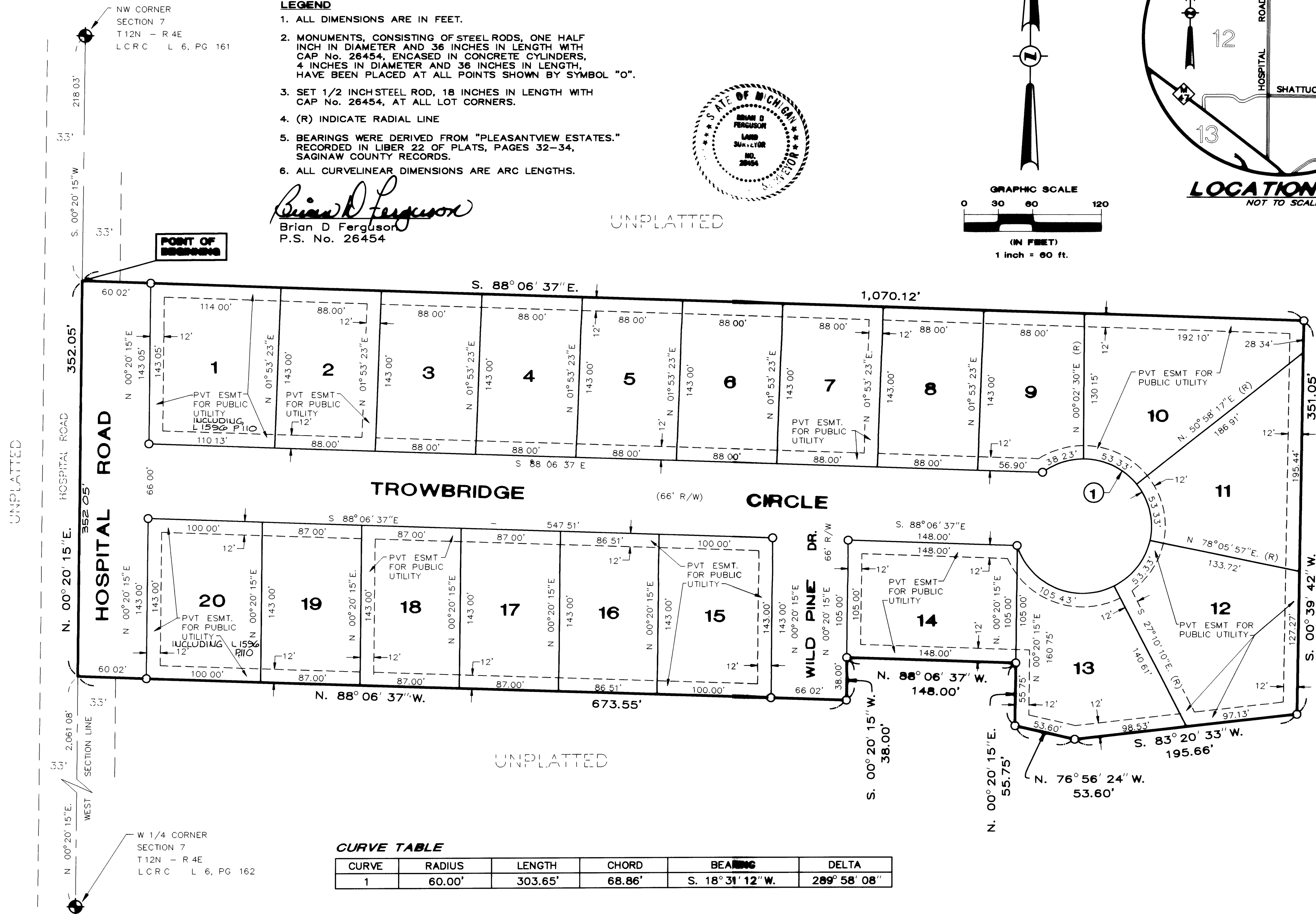
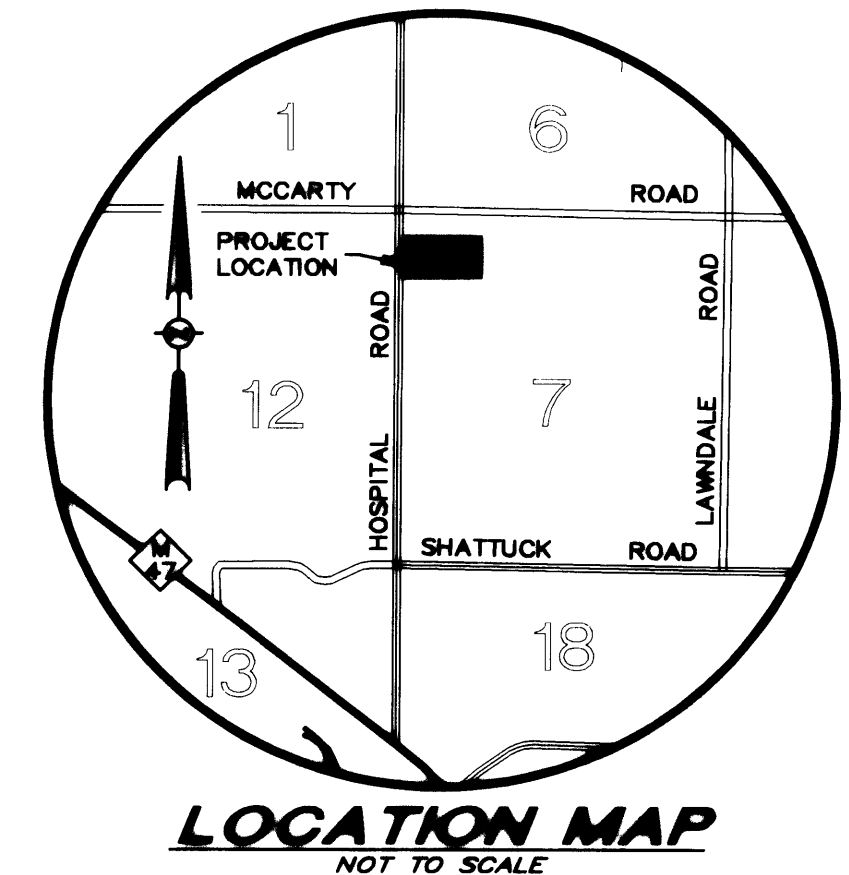
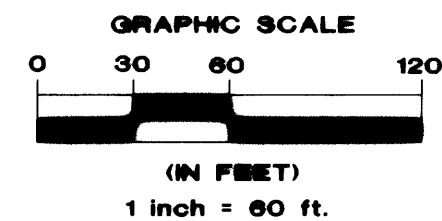
LEGEND

1. ALL DIMENSIONS ARE IN FEET.
2. MONUMENTS, CONSISTING OF STEEL RODS, ONE HALF INCH IN DIAMETER AND 36 INCHES IN LENGTH WITH CAP No. 26454, ENCASED IN CONCRETE CYLINDERS, 4 INCHES IN DIAMETER AND 36 INCHES IN LENGTH, HAVE BEEN PLACED AT ALL POINTS SHOWN BY SYMBOL "O".
3. SET 1/2 INCH STEEL ROD, 18 INCHES IN LENGTH WITH CAP No. 26454, AT ALL LOT CORNERS.
4. (R) INDICATE RADIAL LINE
5. BEARINGS WERE DERIVED FROM "PLEASANTVIEW ESTATES." RECORDED IN LIBER 22 OF PLATS, PAGES 32-34, SAGINAW COUNTY RECORDS.
6. ALL CURVILINEAR DIMENSIONS ARE ARC LENGTHS.

Brian D Ferguson
Brian D Ferguson
P.S. No. 26454



UNPLATTED



CURVE TABLE

CURVE	RADIUS	LENGTH	CHORD	BEARING	DELTA
1	60.00'	303.65'	68.86'	S. 18° 31' 12" W.	289° 58' 08"

NW CORNER
SECTION 7
T 12N - R 4E
LCRC L 6, PG 161

W 1/4 CORNER
SECTION 7
T 12N - R 4E
LCRC L 6, PG 162

UNPLATTED

UNPLATTED

UNPLATTED