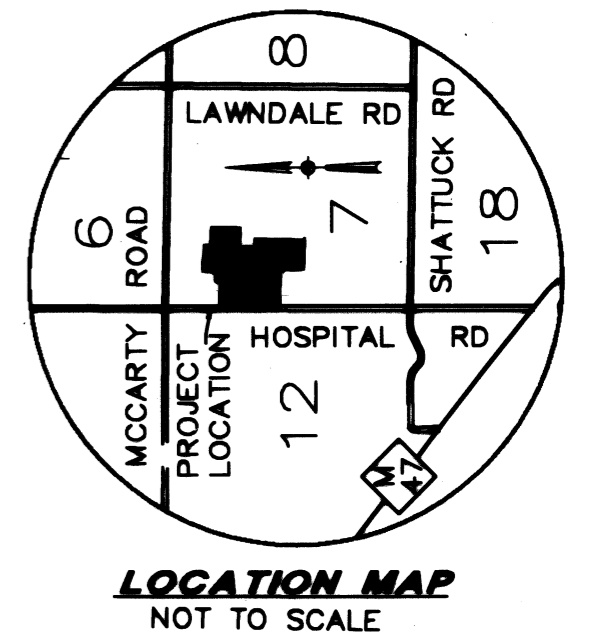
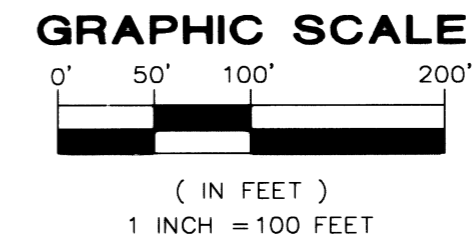
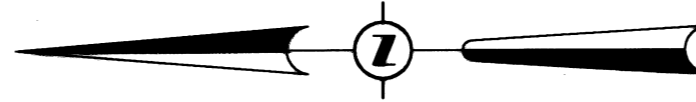


GATEHOUSE MANOR ESTATES NO. 3

PART OF THE FRACTIONAL NW 1/4 OF SECTION 7, T12N-R4E
SAGINAW TOWNSHIP, SAGINAW COUNTY, MICHIGAN

CURVE TABLE

NO.	RADIUS	ARC	CHORD	CHORD BEARING	DELTA
1	17.00	26.33	23.78	S44°01'58"E	88°44'22"
2	83.00	128.55	116.08	S44°01'58"E	88°44'22"
3	60.00	276.74	88.99	S40°31'58"E	264°15'39"
4	60.00	307.10	66.00	S89°00'42"E	293°15'58"



LEGEND
ALL DIMENSIONS ARE IN FEET.
MONUMENTS, CONSISTING OF STEEL RODS, ONE HALF INCH IN DIAMETER AND 36 INCHES IN LENGTH WITH CAP NO. 26454, ENCASED IN CONCRETE CYLINDERS, 4 INCHES IN DIAMETER AND 36 INCHES IN LENGTH, HAVE BEEN PLACED AT ALL POINTS SHOWN BY SYMBOL 'O'.
SET 1/2 INCH STEEL ROD, 18 INCHES IN LENGTH WITH CAP NO. 26454, AT ALL LOT CORNERS.
"O" INDICATES FOUND CONCRETE MONUMENT 4 INCHES IN DIAMETER WITH A 1/2 INCH STEEL ROD.
ALL CURVILINEAR DIMENSIONS ARE ARC LENGTHS.
(R) INDICATES RADIAL LINE.
BEARINGS AS SHOWN ARE REFERENCED TO THE RECORDED PLAT OF GATEHOUSE MANOR ESTATES NO. 2 AS RECORDED IN LIBER 29 OF PLATS, PAGE 49.

GATEHOUSE MANOR ESTATES NO. 2
RECORDED LIBER 29, PAGE 49

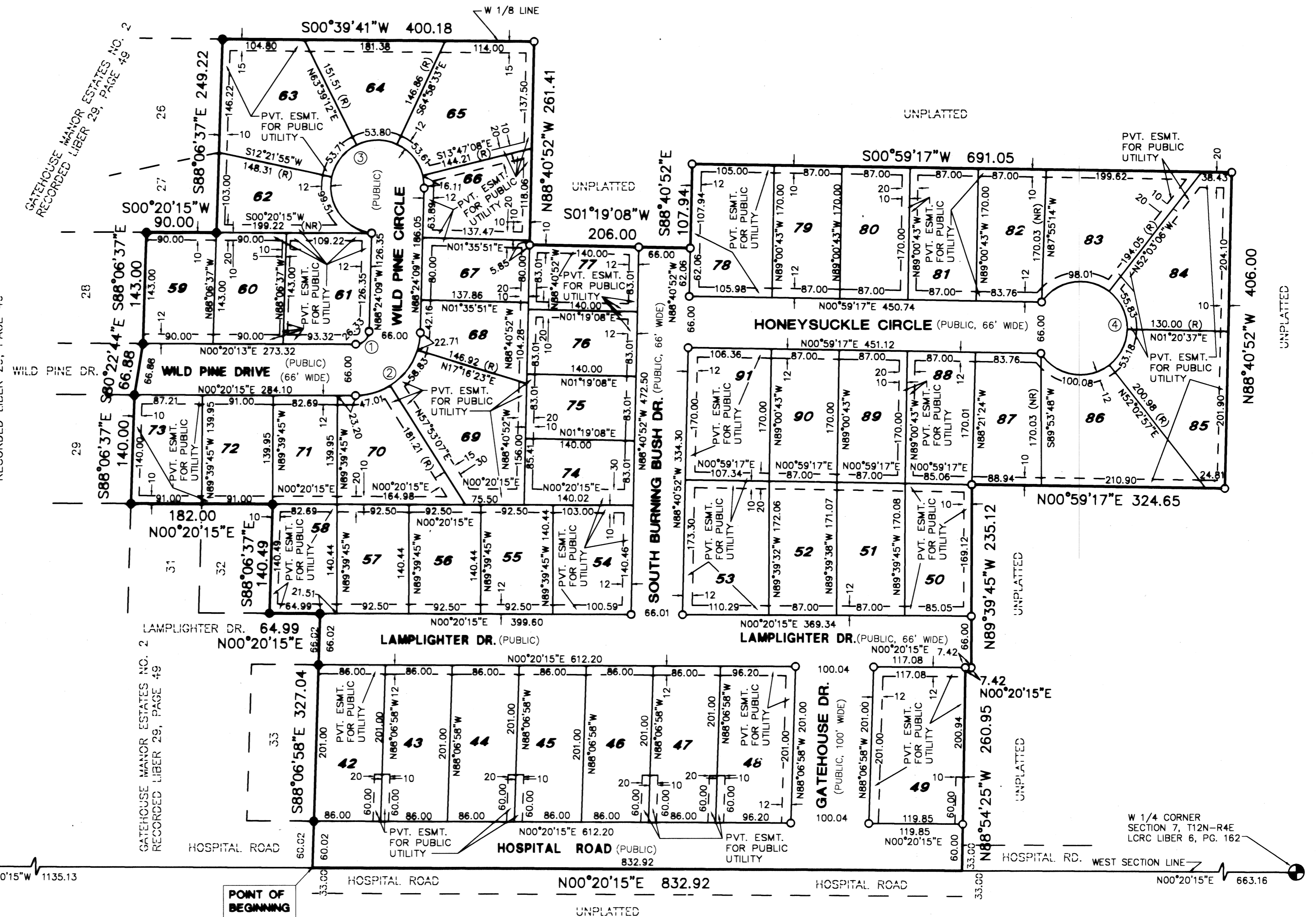


Brian D. Ferguson
BRIAN D FERGUSON, PS #26454

NW CORNER
SECTION 7, T12N-R4E
LCRC LIBER 6, PG. 161

S00°20'15"W 1135.13

POINT OF BEGINNING



GATEHOUSE MANOR ESTATES NO. 2
RECORDED LIBER 29, PAGE 49

W 1/4 CORNER
SECTION 7, T12N-R4E
LCRC LIBER 6, PG. 162