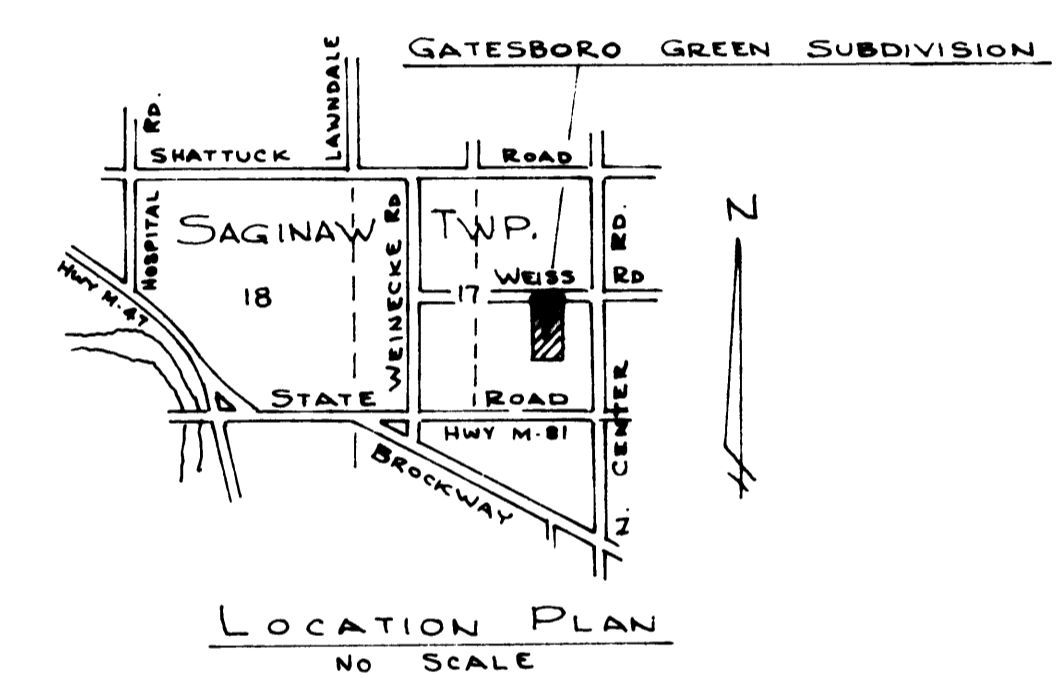
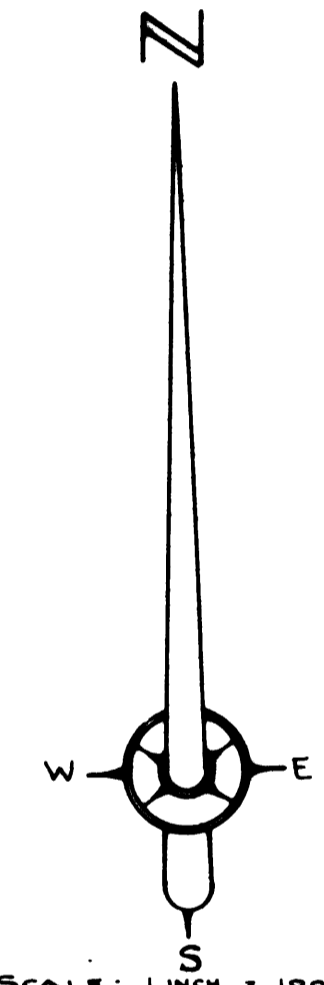
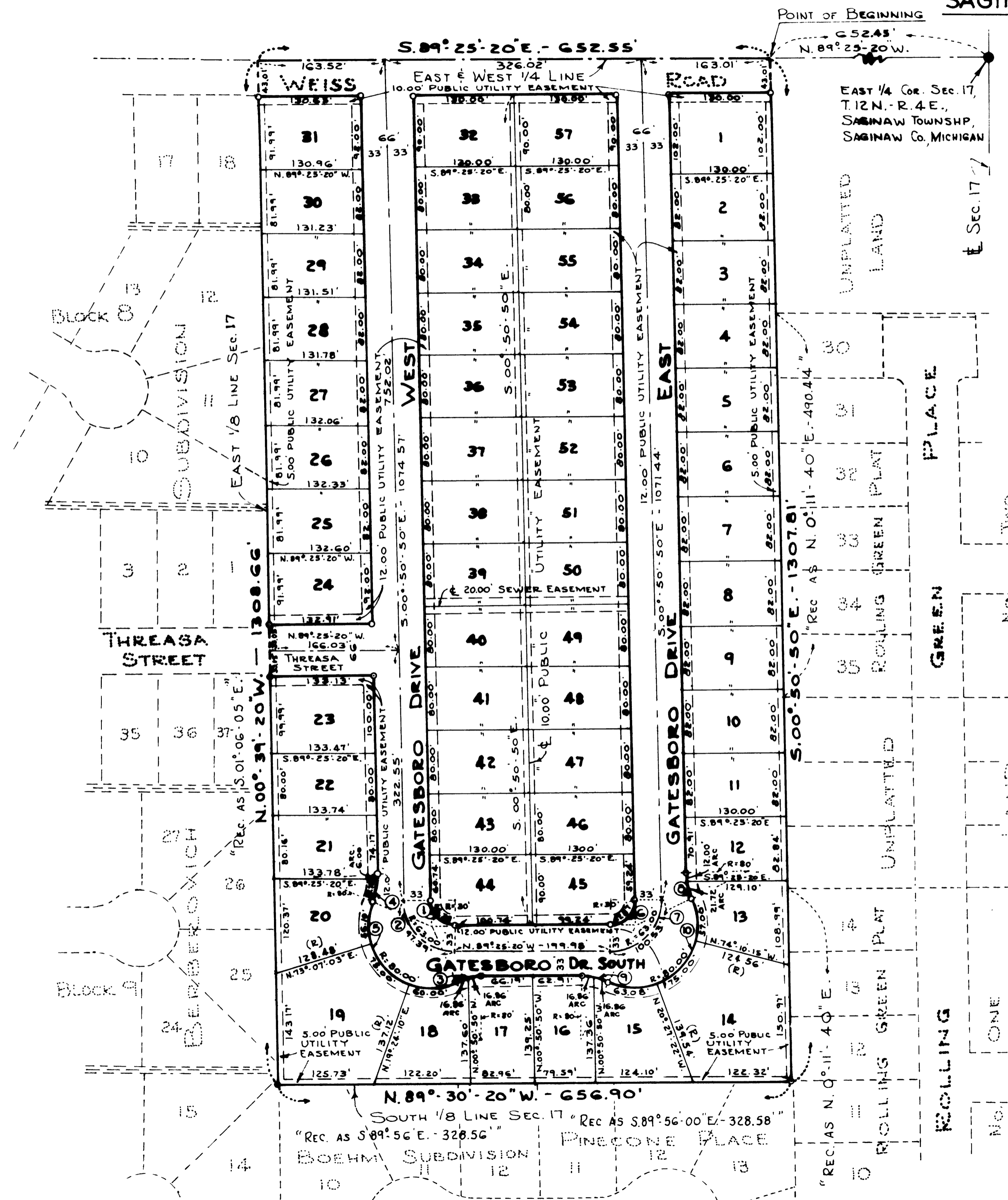


GATESBORO GREEN SUBDIVISION

PART OF THE SOUTHEAST 1/4, SECTION 17, T. 12N.-R. 4 E.
SAGINAW TOWNSHIP, SAGINAW COUNTY, MICHIGAN.

SPICER ENGINEERING COMPANY
SAGINAW, MICHIGAN
1971



SCALE: 1 INCH = 100 FEET

| No. | DELTA ANGLE | RADIUS | ARC | CHORD | CHORD BEARING | TANGENT |
|-----|----------------|--------|---------|---------|-------------------|---------|
| 1 | 88° 34' - 30" | 30.00' | 46.38' | 41.90' | N. 45° 08' 05" W. | 29.26' |
| 2 | 88° 34' - 30" | 63.00' | 97.39' | 87.98' | N. 45° 08' 05" W. | 61.45' |
| 3 | 24° 08' - 49" | 80.00' | 33.72' | 33.47' | N. 78° 30' 16" E. | 17.11' |
| 4 | 24° 08' - 49" | 80.00' | 33.72' | 33.47' | S. 11° 13' 34" W. | 17.11' |
| 5 | 136° 52' - 07" | 80.00' | 191.10' | 148.80' | N. 45° 08' 05" W. | 202.41' |
| 6 | 91° 25' - 30" | 30.00' | 47.87' | 42.95' | S. 44° 51' 55" W. | 30.76' |
| 7 | 91° 25' - 30" | 63.00' | 100.53' | 90.20' | S. 44° 51' 55" W. | 64.59' |
| 8 | 24° 08' - 49" | 80.00' | 33.72' | 33.47' | N. 12° 55' 14" W. | 17.11' |
| 9 | 24° 08' - 49" | 80.00' | 33.72' | 33.47' | S. 77° 20' 56" E. | 17.11' |
| 10 | 139° 43' - 07" | 80.00' | 195.08' | 150.22' | S. 44° 51' 55" W. | 218.13' |

- 1- ALL DIMENSIONS ARE GIVEN IN FEET
- 2- ALL CURVILINEAR MEASUREMENTS ARE ARC DISTANCES
- 3- CONCRETE MONUMENTS HAVE BEEN PLACED AT ALL POINTS MARKED "O"
- 4- SET SOLID IRON BARS 1/2" IN DIA. BY 18" IN LENGTH AT ALL LOT CORNERS
- 5- BEARINGS ARE TRUE AS DETERMINED FROM A SOLAR OBSERVATION ON SEPT. 14, 1971
- 6- (C) INDICATES CURVE NUMBER (SEE CURVE DATA TABLE HEREON)
- 7- (R) INDICATES RADIAL LINE
- 8- ALL RECORDED BEARINGS OF THE ADJOINING PLATS ARE SHOWN HEREON.